



# SERVICE PARTS LIST

**BULLETIN NO.**  
54-38-0250

SPECIFY CATALOG NO. AND SERIAL NO. WHEN ORDERING PARTS		REVISED BULLETIN	DATE
5" D.I. SANDER-GRINDER			Oct. '81
CATALOG NO. 6146	STARTING SERIAL NO. 684-1001	WIRING INSTRUCTION	
		58-01-0308	

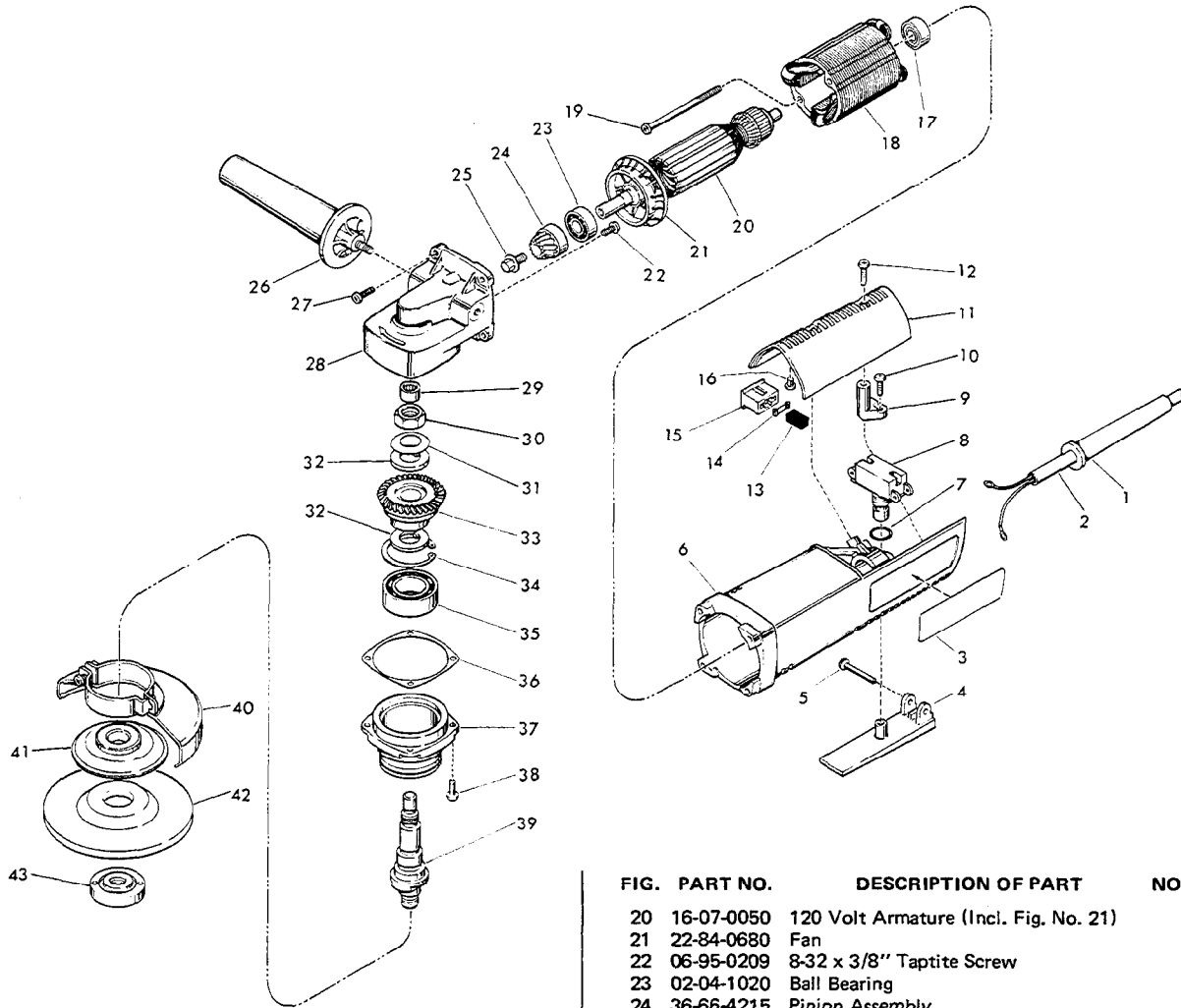


FIG.	PART NO.	DESCRIPTION OF PART	NO. REQ.
1	44-76-0110	Cord Protector	(1)
2	22-64-0215	Cord Set	(1)
3	12-65-4111	Nameplate Blank	(1)
4	31-92-0110	Trigger	(1)
5	06-72-0810	.146 Dia. x 1-3/32" Rivet	(1)
6	31-50-0235	Motor Housing	(1)
7	34-40-4015	O-Ring	(1)
8	23-66-1170	Switch	(1)
9	31-17-0120	Cord Clamp	(1)
10	06-95-0216	8-16 x 5/8" Plastite Screw	(2)
11	31-15-0140	Cover	(1)
12	06-95-0216	8-16 x 5/8" Plastite Screw	(2)
13	22-16-0275	Carbon Brush	(2)
14	23-52-0190	Brush Spring	(2)
15	22-20-0450	Brush Holder	(2)
16	42-38-0180	Rubber Bumper	(2)
17	02-04-0850	Ball Bearing	(1)
18	18-07-0050	120 Volt Field	(1)
19	06-95-0218	8-16 x 2-1/2" Plastite Screw	(2)

FIG.	PART NO.	DESCRIPTION OF PART	NO. REQ.
20	16-07-0050	120 Volt Armature (Incl. Fig. No. 21)	(1)
21	22-84-0680	Fan	(1)
22	06-95-0209	8-32 x 3/8" Taptite Screw	(2)
23	02-04-1020	Ball Bearing	(1)
24	36-66-4215	Pinion Assembly	(1)
25	06-75-0074	1/4-20 x 3/8" Hex Washer Hd. Screw	(1)
26	49-15-0250	Side Handle	(1)
27	06-95-0216	8-16 x 5/8" Plastite Screw	(4)
28	14-30-0300	Gear Case Assembly (Incl. Fig. No. 29)	(1)
29	02-50-2423	Needle Bearing	(1)
30	06-55-2850	1/2-13 Hex Nut	(1)
31	40-50-7785	Spring Washer	(1)
32	45-88-7865	Washer	(2)
33	32-05-1200	Spiral Bevel Gear	(1)
34	34-80-2960	Retaining Ring-Internal	(1)
35	02-04-1746	Ball Bearing	(1)
36	45-14-0160	Shim (0 to 3 as Required)	(1)
37	28-53-0220	Spindle Hub	(1)
38	06-95-0209	8-32 x 3/8" Taptite Screw	(4)
39	38-50-5300	Spindle	(1)
40	49-12-0330	Wheel Guard Assembly	(1)
41	49-05-0070	Flange	(1)
42	—	Select From Catalog	(1)
43	49-05-0050	Flange Nut	(1)
	49-96-4078	3/4" Wrench (Not Shown)	(1)
	49-96-7200	Spanner Wrench (Not Shown)	(1)