



# SERVICE PARTS LIST

**BUL. 54-38-3350**

## 9" SANDER-GRINDER

REVISED BUL.

DATE

AUG. '78

**Catalog No. 6102**

Starting Serial No. **538-1001**

WIRING INSTRUCTIONS  
**58-01-0305**

Specify Catalog and Serial No. when ordering parts

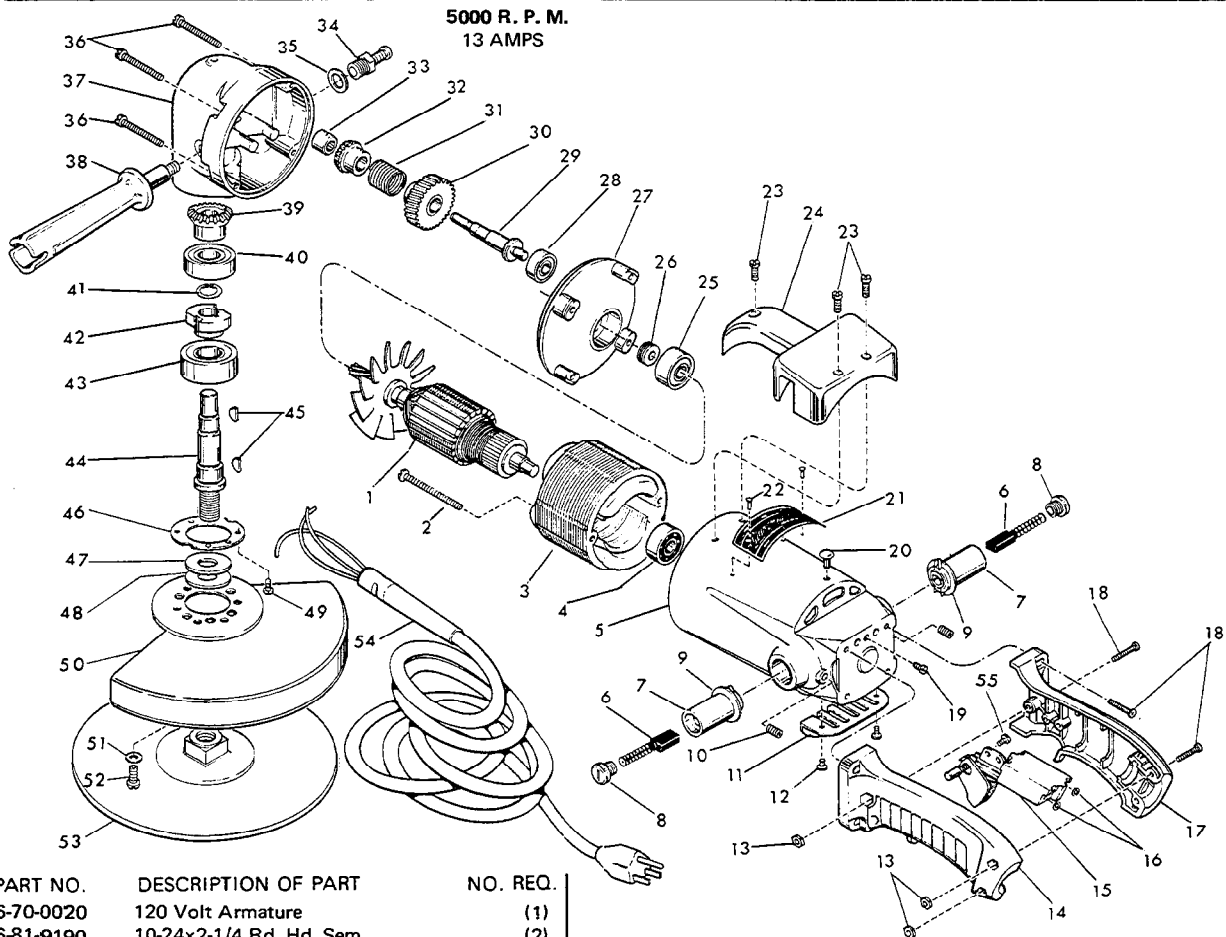


FIG.	PART NO.	DESCRIPTION OF PART	NO. REQ.
1	16-70-0020	120 Volt Armature	(1)
2	06-81-9190	10-24x2-1/4 Rd. Hd. Sem	(2)
3	18-70-0020	120 Volt Field	(1)
4	02-04-1070	Ball Bearing	(1)
5	28-50-5200	Motor Housing (Includes 45-30-0110 Bearing Retaining Slug)	(1)
6	22-18-0055	Carbon Brush	(2)
7	22-22-1015	Brush Holder	(2)
8	23-44-0030	Brush Retaining Screw	(2)
9	23-86-0060	Insulating Washer	(2)
10	06-83-2000	10-24x1/4 Set Screw	(2)
11	44-66-0105	Vent Cover Plate	(1)
12	06-81-8650	6-32x1/4 Rd. Hd. Sem	(2)
13	06-55-1000	10-24 Hex Nut	(3)
14	31-44-0590	Left Handle Half	(1)
15	23-66-0255	Switch (20 Amp)	(1)
16	06-97-1800	Lockwasher	(4)
17	31-44-0580	Right Handle Half	(1)
18	06-81-4207	10-24x7/8 Phillips Pan Hd. Screw	(7)
19	06-81-9125	10-24x1/4 Ground Screw	(1)
20	06-77-1350	14x1/4 Driv-In Screw	(1)
21	12-99-0034	Nameplate Blank	(1)
22	06-85-0200	Nameplate Screw	(2)
23	06-81-6950	10-24x1/2 Fil. Hd. Sem	(3)
24	31-70-0100	Tool Rest	(1)
25	02-04-1340	Ball Bearing	(1)
26	45-28-0080	Grease Slinger	(1)
27	28-28-0381	Diaphragm	(1)
28	02-04-0910	Ball Bearing	(1)
29	36-66-3301	Intermediate Shaft	(1)
30	32-40-1481	Intermediate Gear	(1)

FIG.	PART NO.	DESCRIPTION OF PART	NO. REQ.
31	40-50-3200	Clutch Spring	(1)
32	32-05-1120	Bevel Gear	(1)
33	02-50-2130	Needle Bearing	(1)
34	44-20-0060	Spindle Lock Assembly	(1)
35	45-88-5320	Flat Washer	(1)
36	06-81-7300	10-24x1-3/4 Fil. Hd. Sem	(4)
37	28-14-0610	Gear Case	(1)
38	43-62-0570	Side Handle	(1)
39	32-05-1130	Bevel Gear	(1)
40	02-04-1710	Ball Bearing	(1)
41	34-60-1290	Retaining Ring	(1)
42	42-74-0065	Spindle Locking Cog	(1)
43	02-04-2065	Ball Bearing	(1)
44	38-50-1751	Spindle	(1)
45	06-42-1600	Woodruff Key	(2)
46	45-88-0220	Spindle Retaining Washer	(1)
47	45-88-0141	Hub Thrust Washer	(1)
48	45-88-0160	Spindle Rubber Washer	(1)
49	06-81-6050	8-32x5/16 Fil. Hd. Sem	(6)
50	49-12-0090	9" Disc Guard (Incl. Fig. Nos. 51 & 52)	(1)
51	06-97-3800	Lockwasher	(2)
52	06-81-4700	1/4-20x1/2 Rd. Hd. Screw	(2)
53	49-93-3230	9" Abrasive Wheel	(1)
54	22-64-0075	Cord Set	(1)
55	06-95-0215	8-18x1/2 Pan Hd. Thread Form Screw	(1)
56	10-98-5990	Caution Plate (Not Shown)	(1)