



# ORIGINAL CONSTRUCTION SERVICE PARTS LIST

**BULLETIN NO.  
55-38-1825**

SPECIFY CATALOG NO. AND SERIAL NO. WHEN ORDERING PARTS			REVISED BULLETIN	DATE
<b>9" GRINDER</b>				Aug. 2005
<b>CATALOG NO.</b>	<b>6090-50</b>	<b>SERIAL NUMBER</b>	<b>WIRING INSTRUCTION 58-03-1375</b>	
		<b>A14A</b>		

**EXAMPLE:**  
Component Parts (Small #)  
Are Included When Ordering  
The Assembly (Large #).

**SEE THE REVERSE SIDE FOR THE CURRENT  
SERVICE CONSTRUCTION OF THIS TOOL**

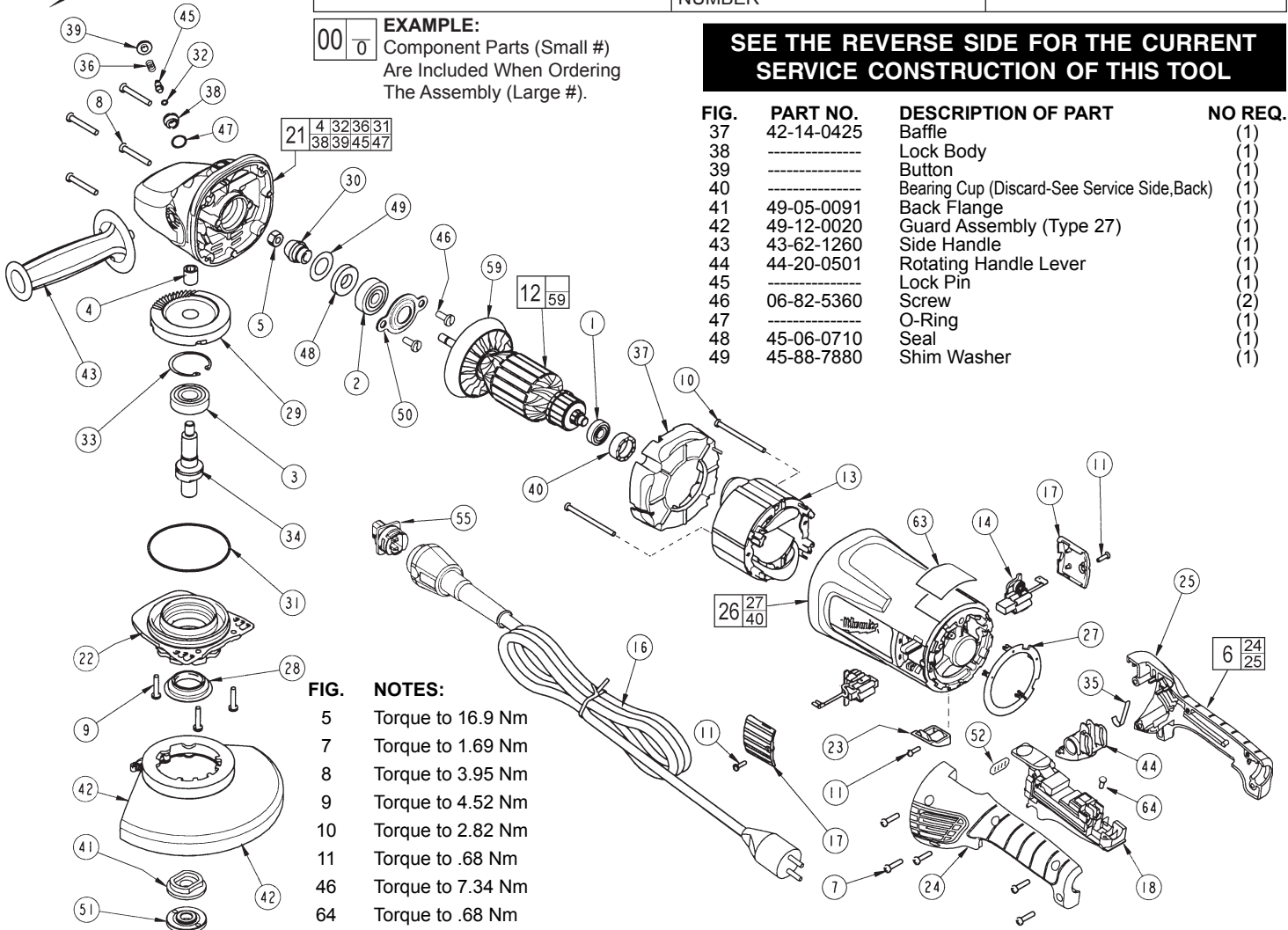


FIG.	PART NO.	DESCRIPTION OF PART	NO REQ.
37	42-14-0425	Baffle	(1)
38	-----	Lock Body	(1)
39	-----	Button	(1)
40	-----	Bearing Cup (Discard-See Service Side,Back)	(1)
41	49-05-0091	Back Flange	(1)
42	49-12-0020	Guard Assembly (Type 27)	(1)
43	43-62-1260	Side Handle	(1)
44	44-20-0501	Rotating Handle Lever	(1)
45	-----	Lock Pin	(1)
46	06-82-5360	Screw	(2)
47	-----	O-Ring	(1)
48	45-06-0710	Seal	(1)
49	45-88-7880	Shim Washer	(1)

**FIG. NOTES:**

5	Torque to 16.9 Nm
7	Torque to 1.69 Nm
8	Torque to 3.95 Nm
9	Torque to 4.52 Nm
10	Torque to 2.82 Nm
11	Torque to .68 Nm
46	Torque to 7.34 Nm
64	Torque to .68 Nm

FIG.	PART NO.	DESCRIPTION OF PART	NO REQ.
1	02-04-1675	Ball Bearing	(1)
2	02-04-1680	Ball Bearing	(1)
3	02-04-1745	Ball Bearing	(1)
4	02-50-2429	Needle Bearing	(1)
5	06-55-2455	Hex Nut	(1)
6	14-34-0580	Handle Kit	(1)
7	06-82-0055	8-16 Torx Plastite Screw T-20	(5)
8	06-82-0060	10-14 Torx Plastite Screw T-25	(4)
9	06-82-0065	10-32 x 1 Pan Hd. Taptite T-25 Screw	(3)
10	06-82-0070	8-16 Torx Plastite Screw T-15	(2)
11	06-82-7240	6-19 x 1/2 Slit. Pan Hd. Plast. T-15	(3)
12	16-74-0120	Armature Assembly	(1)
13	18-74-1125	Field	(1)
14	22-20-2230	Brush Holder Assembly	(2)
16	22-64-3610	Quik-Lok Cord Set	(1)
17	23-44-0255	Brush Cover	(2)
18	23-66-2671	Switch	(1)
21	28-14-1146	Gearcase Assembly	(1)
22	28-53-0151	Spindle Hub Kit	(1)
23	31-15-0166	Cover	(1)
24	-----	Left Hand Handle Halve	(1)
25	-----	Right Hand Handle Halve	(1)
26	-----	Motor Hsg. Assy. (See Service Side on Back)	(1)
27	31-53-0160	Plug	(1)
28	31-55-0150	Bearing Shield	(1)
29	32-05-1505	Gear	(1)
30	32-60-1505	Pinion Gear	(1)
31	34-40-0505	O-Ring	(1)
32	-----	O-Ring	(1)
33	34-80-2960	Retaining Ring	(1)
34	38-50-2505	Spindle Shaft	(1)
35	40-50-1375	Flat Spring	(1)
36	-----	Compression Spring	(1)

FIG.	PART NO.	DESCRIPTION OF PART	NO REQ.
50	44-86-0040	Bearing Retainer	(1)
51	49-05-0085	Flange Nut, M14	(1)
52	45-06-0700	Foam Contamination Pad	(1)
55	22-56-1055	Blade Housing Assembly	(1)
59	22-84-0540	Fan Assembly	(1)
63	12-99-9090	Nameplate Blank	(1)
64	05-78-0250	Switch Screw	(2)
	49-96-7210	Spanner Wrench (Not Shown)	(1)

**FIG. LUBRICATION:**  
21 1.25 oz. (35 grams) of Type "Y" grease, No. 49-08-5270 in main gear cavity of gearcase.  
29,30 "Y" grease must be applied to all gear teeth.  
31,32 Lightly coat o-rings with "Y" grease prior to installation.

**FIG. NOTES:**  
4,21 Press needle bearing flush ±.02 to gearcase boss face.  
33 Bevel side of retaining ring away from bearing face.  
52 Foam pad has an adhesive backing, place over switch terminals and press onto switch.

**MILWAUKEE ELECTRIC TOOL CORPORATION**  
13135 W. LISBON RD., BROOKFIELD, WI 53005



# CURRENT SERVICE CONSTRUCTION SERVICE PARTS LIST

BULLETIN NO.

SPECIFY CATALOG NO. AND SERIAL NO. WHEN ORDERING PARTS		REVISED BULLETIN	DATE
<b>9" GRINDER</b>			
<b>CATALOG NO.</b>	<b>6090-50</b>	<b>SERIAL NUMBER</b>	<b>A14A</b>
			<b>WIRING INSTRUCTION 58-03-1376</b>

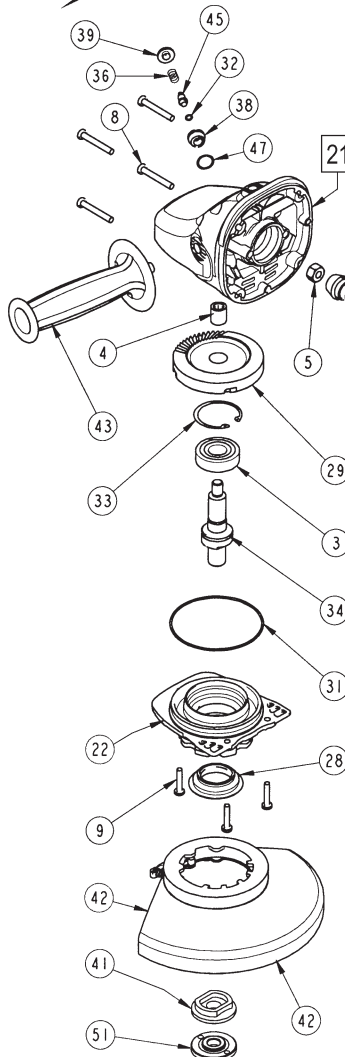


FIG.	PART NO.	DESCRIPTION OF PART	NO REQ.
00	0	<b>EXAMPLE:</b>	
		Component Parts (Small #)	
		Are Included When Ordering	
		The Assembly (Large #).	
35	40-50-1375	Flat Spring	(1)
36	-----	Compression Spring	(1)
37	42-14-0425	Baffle	(1)
38	-----	Lock Body	(1)
39	-----	Button	(1)
41	49-05-0091	Back Flange	(1)
42	49-12-0020	Guard Assembly (Type 27)	(1)
43	43-62-1260	Side Handle	(1)
44	44-20-0501	Rotating Handle Lever	(1)
45	-----	Lock Pin	(1)
46	06-82-5360	Screw	(2)
47	-----	O-Ring	(1)
48	45-06-0710	Seal	(1)
49	45-88-7880	Shim Washer	(1)
50	44-86-0040	Bearing Retainer	(1)
51	49-05-0085	Flange Nut, M14	(1)
52	45-06-0700	Foam Contamination Pad	(1)
55	22-56-1055	Blade Housing Assembly	(1)
59	22-84-0540	Fan Assembly	(1)

**FIG. NOTES:**

5	Torque to 16.9 Nm
7	Torque to 1.69 Nm
8	Torque to 3.95 Nm
9	Torque to 4.52 Nm
10	Torque to 2.82 Nm
11	Torque to .68 Nm
46	Torque to 7.34 Nm
64	Torque to .68 Nm

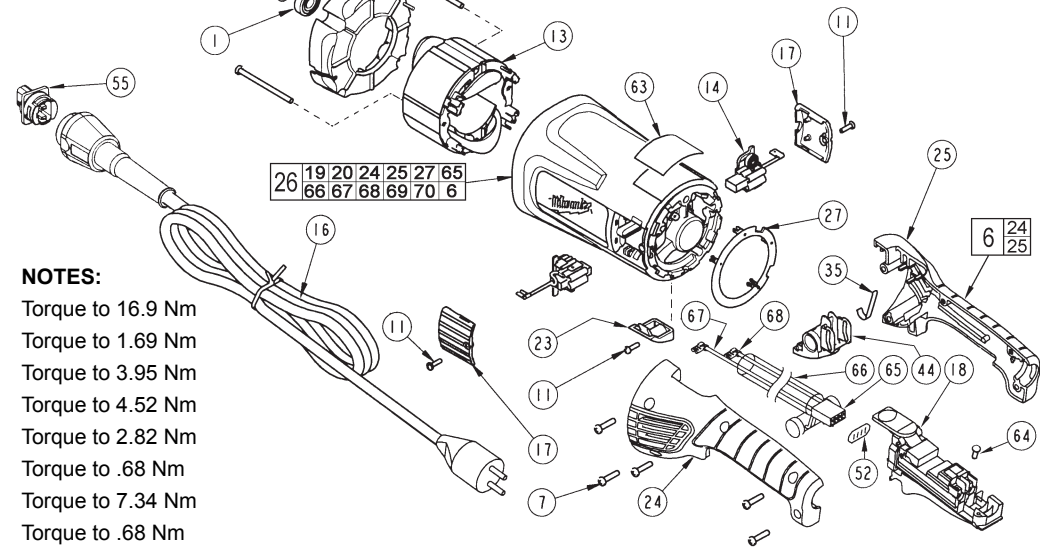


FIG.	PART NO.	DESCRIPTION OF PART	NO REQ.
1	02-04-1675	Ball Bearing	(1)
2	02-04-1680	Ball Bearing	(1)
3	02-04-1745	Ball Bearing	(1)
4	02-50-2429	Needle Bearing	(1)
5	06-55-2455	Hex Nut	(1)
6	14-34-0580	Handle Kit	(1)
7	06-82-0055	8-16 Torx Plastite Screw T-20	(5)
8	06-82-0060	10-14 Torx Plastite Screw T-25	(4)
9	06-82-0065	10-32 x 1 Pan Hd. Tapitite T-25 Screw	(3)
10	06-82-0070	8-16 Torx Plastite Screw T-15	(2)
11	06-82-7240	6-19 x 1/2 Sit. Pan Hd. Plast. T-15	(3)
12	16-74-0120	Armature Assembly	(1)
13	18-74-1125	Field	(1)
14	22-20-2230	Brush Holder Assembly	(2)
16	22-64-3610	Quik-Lok Cord Set	(1)
17	23-44-0255	Brush Cover	(2)
18	23-66-2671	Switch	(1)
19	45-06-0830	Bearing Seal	(1)
20	31-55-0290	Dust Shield	(1)
21	28-14-1146	Gearcase Assembly	(1)
22	28-53-0151	Spindle Hub Kit	(1)
23	31-15-0166	Cover	(1)
24	-----	Left Hand Handle Halve	(1)
25	-----	Right Hand Handle Halve	(1)
26	31-50-1753	Motor Housing Assembly	(1)
27	31-53-0160	Plug	(1)
28	31-55-0150	Bearing Shield	(1)
29	32-05-1505	Gear	(1)
30	32-60-1505	Pinion Gear	(1)
31	34-40-0505	O-Ring	(1)
32	-----	O-Ring	(1)
33	34-80-2960	Retaining Ring	(1)
34	38-50-2505	Spindle Shaft	(1)

FIG.	PART NO.	DESCRIPTION OF PART	NO REQ.
63	12-99-9090	Nameplate Blank	(1)
64	05-78-0250	Switch Screw	(2)
65	23-94-2626	Harness and Resistor Assembly	(1)
66	23-48-0160	Sleeve	(1)
67	23-94-9311	Wire (See 58-03-1376)	(1)
68	23-94-9316	Wire (See 58-03-1376)	(1)
69	23-94-9301	Wire (Not Shown - See 58-03-1376)	(1)
70	23-94-9306	Wire (Not Shown - See 58-03-1376)	(1)
	49-96-7210	Spanner Wrench (Not Shown)	(1)

**FIG. LUBRICATION:**  
21 1.25 oz. (35 grams) of Type "Y" grease, No. 49-08-5270 in main gear cavity of gearcase.

29,30 "Y" grease must be applied to all gear teeth.  
31,32 Lightly coat o-rings with "Y" grease prior to installation.

**FIG. NOTES:**  
4,21 Press needle bearing flush ±.02 to gearcase boss face.  
33 Bevel side of retaining ring away from bearing face.  
52 Foam pad has an adhesive backing, place over switch terminals and press onto switch.