



SERVICE PARTS LIST

BULLETIN NO.
54-38-0280

SPECIFY CATALOG NO. AND SERIAL NO. WHEN ORDERING PARTS		REVISED BULLETIN	DATE
9" SANDER			Oct. '83
CATALOG NO. 6072	STARTING SERIAL NO. 703-1001	WIRING INSTRUCTION 58-01-0301	
CAT. NO. 6072-6	START SER. NO. 703-1001	BILINGUAL LABEL 10-98-6085	

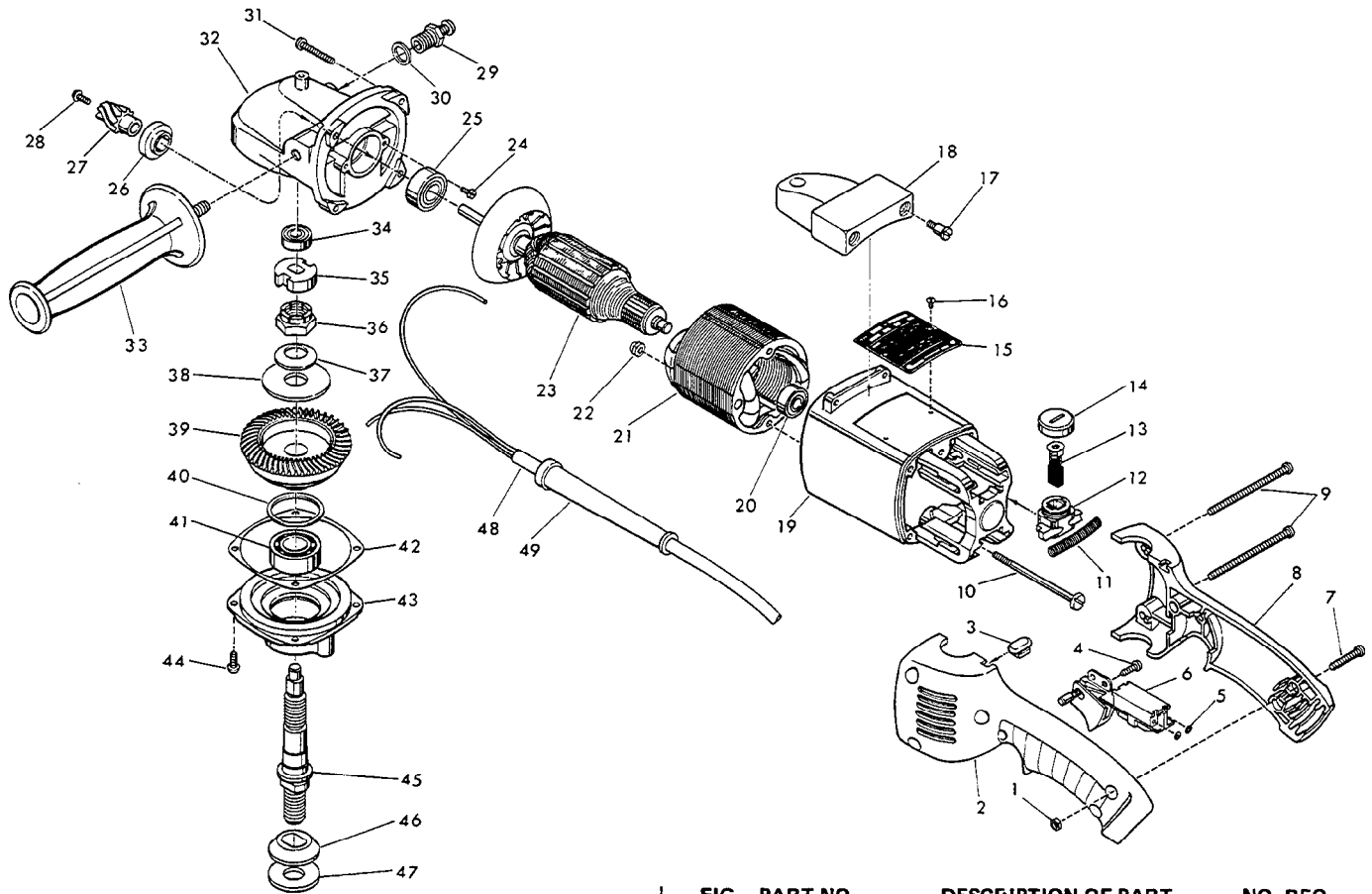


FIG.	PART NO.	DESCRIPTION OF PART	NO. REQ.
1	06-55-1050	10-24 Hex Nut	(5)
2	31-44-1115	Left Handle Half	(1)
3	42-38-0190	Bumper	(1)
4	06-95-0205	8-16 x 1/2" Plastite Screw	(1)
5	06-97-1700	Switch Lock Washer	(4)
6	23-66-0255	Switch	(1)
7	06-81-4206	10-24 x 7/8" Pozidriv Pan Hd. Screw	(3)
8	31-44-1110	Right Handle Half	(1)
9	06-81-5775	10-24 x 2-3/4" Pozidriv Pan Hd. Screw	(2)
10	06-81-7480	10-32 x 2-3/4" Flat Hd. Screw	(2)
11	40-50-7770	Brush Holder Spring	(2)
12	22-22-1325	Brush Holder Assembly	(2)
13	22-18-0680	Brush Assembly	(2)
14	23-44-0210	Brush Retaining Screw	(2)
15	12-99-0125	Nameplate Blank	(1)
16	06-85-0200	Nameplate Screw	(2)
17	45-04-0570	Shoulder Screw	(3)
18	31-70-0140	Tool Rest	(1)
19	31-50-0250	Motor Housing	(1)
20	02-04-0845	Ball Bearing	(1)
21	18-50-0170	120V Field	(1)
22	06-57-3005	10-32 Locking Hex Nut	(2)
23	16-50-0170	120V D.I. Armature (Incl. 22-84-0710 Fan)	(1)
24	06-95-0213	8-32 x 3/8" Pan Hd. Taptite Screw	(2)
25	02-04-1230	Ball Bearing	(1)
26	45-28-0175	Grease Slinger	(1)
27	32-60-2125	Spiral Bevel Pinion	(1)

FIG.	PART NO.	DESCRIPTION OF PART	NO. REQ.
28	06-81-5250	10-24 x 3/8" Hex Washer Hd. Screw (See Note)	(1)
29	44-20-0235	Spindle Lock Assembly	(1)
30	45-88-5320	Flat Washer	(1)
31	06-95-0355	10-14 x 1-1/8" Pan Hd. Thread Form Screw	(4)
32	28-14-1600	Upper Gear Case	(1)
33	43-62-0880	Side Handle	(1)
34	02-04-0820	Ball Bearing	(1)
35	42-74-0080	Spindle Locking Cog	(1)
36	06-55-3251	5/8-11 Hex Nut (See Note)	(1)
37	40-50-7955	Belleville Spring	(1)
38	45-88-7435	Friction Washer	(1)
39	32-05-1275	Spiral Bevel Gear	(1)
40	34-80-2960	Retaining Ring - Internal	(1)
41	02-04-1746	Ball Bearing	(1)
42	45-14-0185	Shim - .005 Thick	(0 to 3 as Required)
43	28-14-1590	Lower Gear Case	(1)
44	06-95-0325	10-24 x 3/8" Pan Hd. Taptite Screw	(4)
45	38-50-5440	Spindle Shaft	(1)
46	49-05-0060	Rubber Washer Flange	(1)
47	45-88-0160	Spindle Washer - Rubber	(1)
48	22-64-0121	Cord Set	(1)
49	44-76-0050	Cord Protector	(1)

NOTES

- FIG.
28 Apply Type 277 Red Loctite
36 Torque to 25 Ft.-Lb.

LUBRICATION - 2 Oz. Type "G" Grease