



# SERVICE PARTS LIST

BUL. 54-38-9002

## 7" DISC SANDER

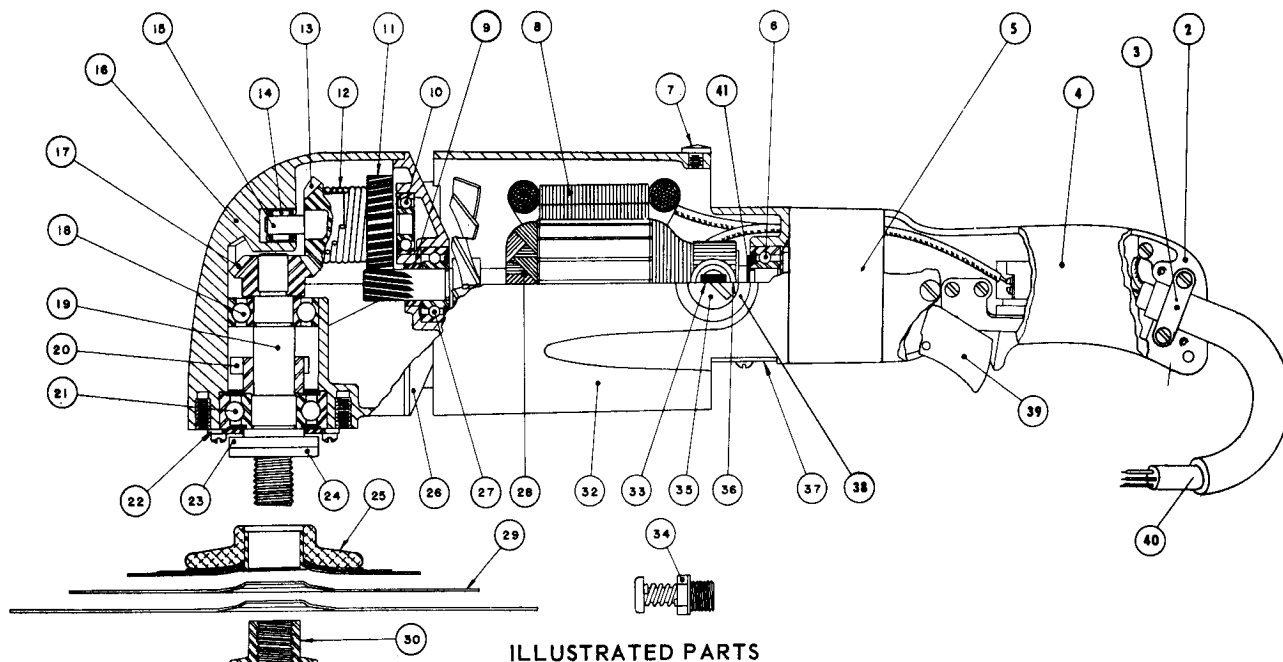
REVISED BUL 6153-4 DATE Feb. '68

Catalog No. 6020-8

Starting Serial No. 153-2250

WIRING INSTR.

Both Model and Serial No. must be furnished to obtain correct parts.



ILLUSTRATED PARTS

FIG. PART NO. DESCRIPTION OF PART

2	28-44-1041	Handle (Switch Mounting Side)
3	28-17-0200	Cord Clamp Strap
4	28-44-9081	Handle (Switch Cover Side)
5	23-62-0100	Radio Supp. System
6	02-04-1070	Ball Bearing (Comm. Eng)
7	06-77-1400	Drive Screw Tool Rest Button
8	18-82-1170	Field Assembly
9	45-28-0080	Grease Slinger
10	02-04-0920	Ball Bearing
11	32-40-1481	Intermediate Gear
12	40-50-3200	Spindle Drive Spring
13	32-50-1241	Miter Gear (sold only with 32-50-1261 as set)
14	02-50-2130	Needle Bearing
15	36-66-3301	Intermediate Shaft
16	28-14-0601	Gear Case
17	32-50-1261	Refer to Item 13
18	02-04-1710	Ball Bearing (Upper)
19	38-50-1751	Spindle (5/8-11 thread)
20	42-74-0061	Spindle Lock Cog
21	02-04-2060	Ball Bearing

FIG. PART NO. DESCRIPTION OF PART

22	45-88-0220	Ball Bearing Retaining Ring
23	45-88-0141	Hub Steel Washer
24	45-88-0160	Hub Rubber Washer
25	48-80-0750	5" Flat Disc Hub Assembly
26	28-28-0381	Diaphragm
27	02-04-1340	Ball Bearing (Pinion End)
★28	16-82-1720	Armature Assembly
29	48-80-0900	7" Flat Backing Disc
30	44-40-0120	Disc Nut (5/8-11 thread)
32	28-50-4562	Motor Housing
33	22-18-0080	Carbon Brush Assembly
34	44-20-0060	Spindle Lock Assembly
35	23-44-0065	Brush Retaining Cap
36	22-22-0055	Brush Holder Assembly (per set 2)
37	44-66-0100	Commutator Cover Plate
38	22-24-0100	Brush Holder Bushing Steel
★39	23-66-0250	Switch Assembly
40	22-64-0160	Cord Set
41	43-06-0070	Grounding Disc

MISCELLANEOUS PARTS NOT SHOWN

PART NO. DESCRIPTION OF PART

PART NO. DESCRIPTION OF PART

28-79-0241	Tool Rest
12-65-3601	Name Plate
43-62-0141	Side Handle Assembly
06-81-6950	10-24x1/2" Fil Hd. Tool Rest Sem (2)
06-83-2650	1/4"-20x3/8" Hdless Brush Holder Set Scs. (4)
06-81-7250	10-24x1-1/2" Fil. Hd. Gear Case Sem (4)
06-81-1625	12-24x2-1/4" Fil. Hd. Switch Handle Scs. (4)
06-81-3750	8-32x1" Oval Hd. Handle Cover Screw
12-98-5100	Warning Plate
★06-77-0450	No. 4x1/4" Drive Pin (2)

06-81-8650	6-32x1/4" Rd. Hd. Com. Cover Plate Screws (2)
06-81-3700	8-32x7/8" Oval Hd. Handle Cover Screws (2)
06-81-6100	8-32x7/16" Fil. Hd. Cord Clamp Strap Screws (2)
06-81-5400	8-32x5/16" Binder Hd. Switch Mtg. Screws (2)
06-81-8950	8-32x2-1/4" Rd. Hd. Field Sem (2)
06-81-8625	6-32x1/4" Rd. Hd. Ground Wire Screw (Brass) Sem
06-81-8200	4-36x3/16" Rd. Hd. Name Plate Sem (2)
06-81-6050	8-32x5/16" Fil Hd. Ret. Washer Sem (6)
23-86-0075	Insulating Washer