



# SERVICE PARTS LIST

**BULLETIN NO.**  
**54-38-0650**

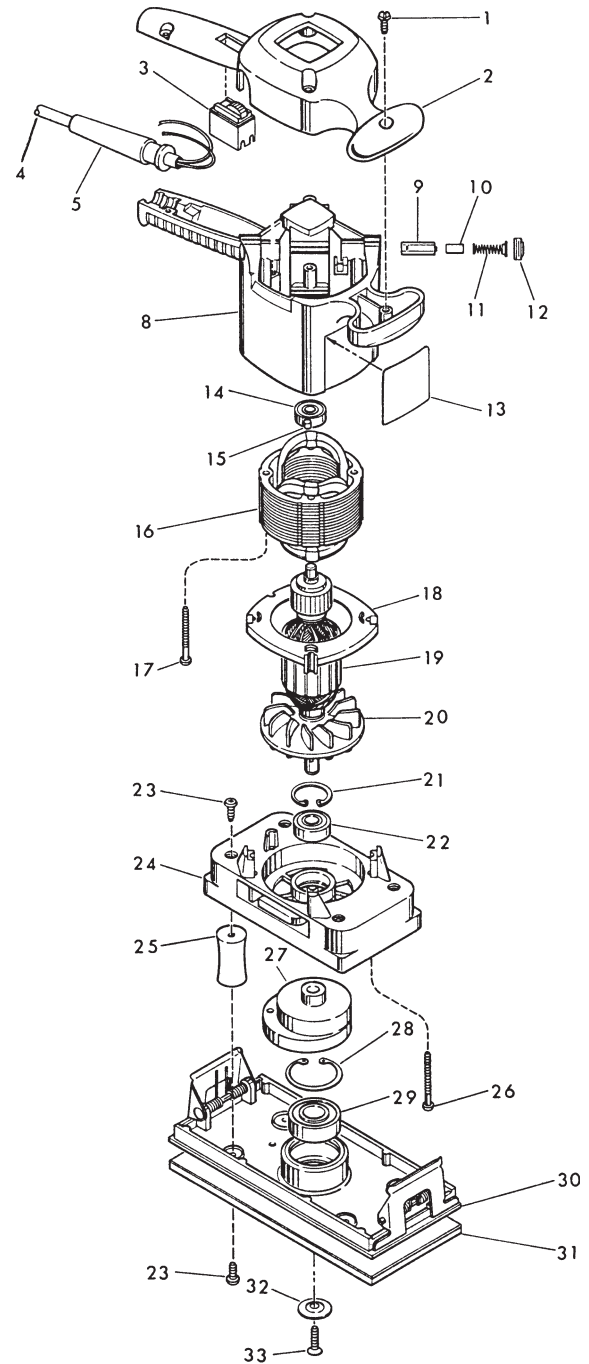
SPECIFY CATALOG NO. AND SERIAL NO. WHEN ORDERING PARTS		REVISED BULLETIN	DATE
<b>LARGE PAD ORBITAL SANDER</b>			Feb 2006
<b>CATALOG NO. 6010</b>	STARTING SERIAL NUMBER	<b>791A</b>	
		WIRING INSTRUCTION <b>58-01-1270</b>	

**EXAMPLE:**



Component Parts (Small #)  
Are Included When Ordering  
The Assembly (Large #).

FIG.	PART NO.	DESCRIPTION OF PART	QTY
1	06-82-7270	8-16 x 5/8" Lg. Plastite Screw T-20	(5)
2	31-15-0150	Housing Cover	(1)
3	23-66-1185	Slide Switch	(1)
4	22-64-0215	Cord Set	(1)
5	44-76-0125	Cord Protector	(1)
8	31-50-0260	Motor Housing	(1)
9	22-20-0420	Brush Tube	(2)
10	22-16-0275	Carbon Brush	(2)
11	23-52-0160	Brush Spring	(2)
12	23-44-0126	Brush Retaining Screw	(2)
13	12-20-0070	Service Nameplate Kit	(1)
14	02-04-0847	Ball Bearing	(1)
15	45-30-0120	Ball Bearing Retaining Slug	(1)
16	18-50-0080	120 Volt Field	(1)
17	06-82-7395	8-16 Pan Hd. Plastite T-20	(2)
18	31-05-0110	Baffle	(1)
19	16-50-0080	120 Volt Armature	(1)
20	22-84-0135	Fan	(1)
21	34-80-2210	Beveled Retaining Ring	(1)
22	02-04-1050	Ball Bearing	(1)
23	06-82-9265	10 x 1/2" Lg. AB Thread Screw T-25	(8)
24	28-28-1530	Diaphragm	(1)
25	42-40-0540	Pillar	(4)
26	06-82-7382	8-16 x 1-5/8" Pan Hd. Plastite T-20	(4)
27	43-16-0140	Large Eccentric	(1)
28	34-80-2960	Beveled Retaining Ring	(1)
29	02-04-1747	Ball Bearing	(1)
30	14-67-0220	Platen Assembly	(1)
31	44-52-0480	Pad Assembly	(1)
32	45-88-0840	Special Washer	(1)
33	06-82-0846	10-32 x 3/4" Flat Hd. T-25	(1)



**FIG.**  
21, 28

**NOTE:**  
Install flat side to bearing.