



Operating Instructions and Parts Manual Bench Grinder with Multitool Attachment

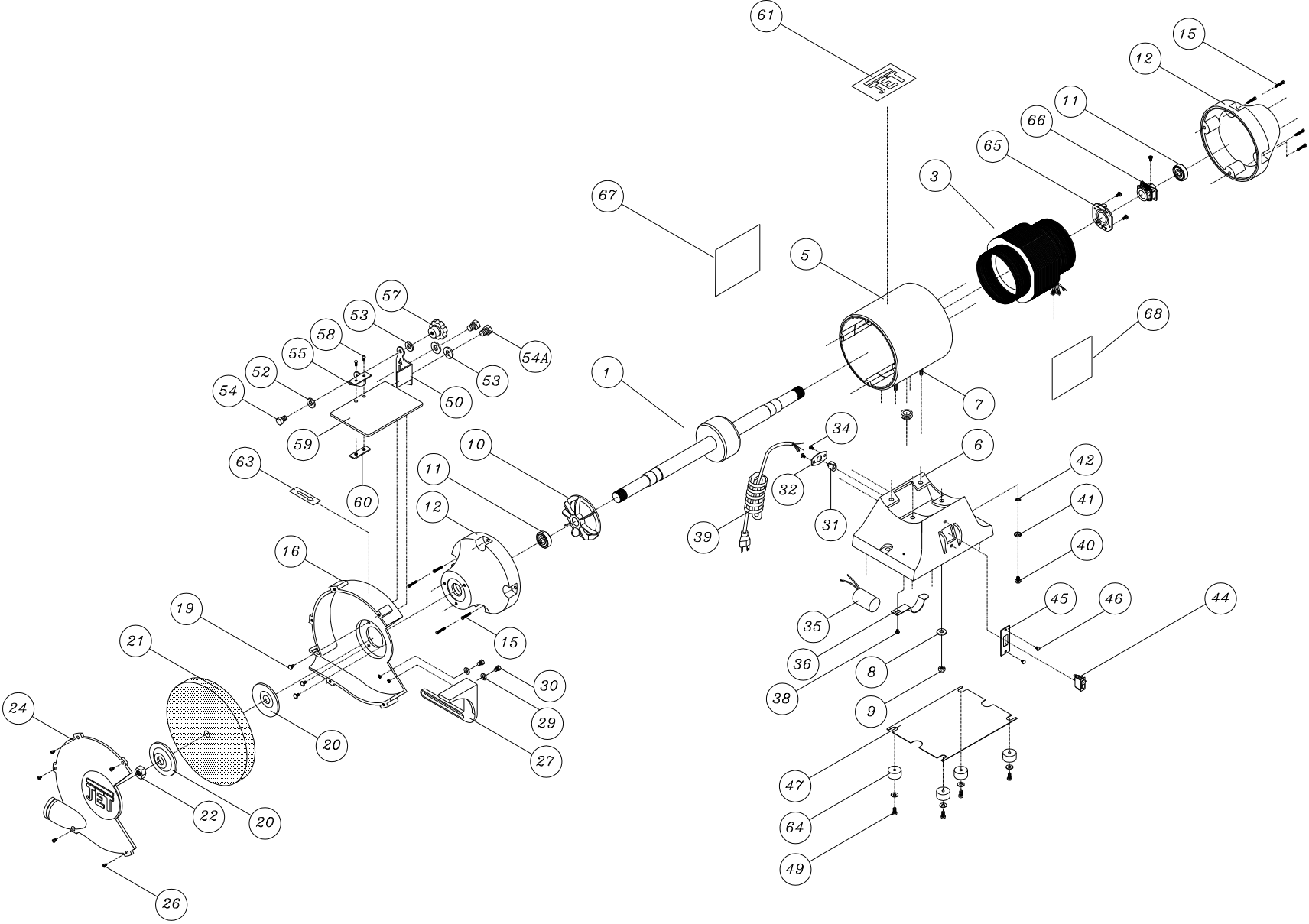
Models JBGM-6, JBGM-8



JET
427 New Sanford Road
LaVergne, Tennessee 37086
Ph.: 800-274-6848
www.jettools.com

Part No. M-577109
Edition 1 06/2017
Copyright © 2017 JET

12.1.1 JBG-M-series Grinder with Multitool Attachment – Exploded View



12.1.2 JBG6A-series Grinder with Multitool Attachment – Parts List

Index No	Part No	Description	Size	Qty
1	JBG6A-02P	Shaft and Rotor Assembly		1
	JBG8A-02P	Shaft and Rotor Assembly		1
3	JBG6A-03	Stator Assembly		1
	JBG8A-03	Stator Assembly		1
5	JBG6A-05G	Motor Housing		1
	JBG8A-05G	Motor Housing		1
6	JBG6A-06G	Base		1
	JBG8A-06G	Base		1
7	JBG6A-07	Cross Screw	1/4" x 7/8"	4
8	TS-0720071	Lock Washer	1/4"	4
9	TS-0561011	Hex Nut	1/4"	4
10	JBG6A-10	Fan		1
	JBG8A-10	Fan		1
11	BB-6202ZZ	Ball Bearing (JBG-6A)		2
	BB-6204ZZ	Ball Bearing (JBG-8A)		2
12	JBG6A-12G	Cover		2
	JBG8A-12G	Cover		2
15	JBG6A-15	Screw	3/16" x 5/8"	4
16	JBG6A-16B	Inner Wheel Guard – left		1
	JBG8A-16B	Inner Wheel Guard – left		1
	JBG10A-18	Flat Washer (JBG-10A only – not shown)		4
19	JBG6A-19	Cross Screw	1/4" x 1/2"	3
20	JBG6A-20	Wheel Flange	1/2" ID, 2"OD	2
	JBG8A-20	Wheel Flange	5/8" ID, 2-3/4"OD	2
21	576208	Grinding Wheel	Ø6" x 3/4", 46 grit	1
	576220	Grinding Wheel	Ø8" x 3/4", 46 grit	1
22	JBG6A-22	Nut - left hand thread	1/2"	1
	JBG8A-22	Nut - left hand thread	5/8"	1
24	JBG6A-24B	Outer Wheel Guard – left		1
	JBG8A-24P	Outer Wheel Guard – left		1
26	JBG6A-26	Cross Screw	1/4" x 1/2"	5
27	JBG6A-27	Tool Rest - left		1
	JBG8A-27	Tool Rest - left		1
29	TS-0680031	Flat Washer	5/16"	2
30	TS-0051031	Hex Cap Bolt	5/16" x 3/4"	2
31	JBG6A-31	Rubber Guide		1
	JBG8A-31	Rubber Guide		1
32	JBG6A-32	Cord Plate		1
	JBG8A-32	Cord Plate		1
34	JBG6A-34	Cross Screw	3/16" x 1/4"	2
35	JBG6A-35	Condenser (125 VAC, 100MFD)		1
	JBG8A-35	Condenser (125 VAC, 200MFD)		1
36	JBG6A-36	Bracket		1
	JBG8A-36	Bracket		1
38	JBG6A-38	Screw	3/16" x 1/4v	1
39	JBG6A-39	Power Cord		1
	JBG8A-39	Power Cord		1
40	JBG6A-40	Cross Screw	3/16" x 3/8"	1
41	JBG6A-41	Star Washer	3/16"	1
42	JBG6A-42	Clip		1
	JBG8A-42	Clip		1
44	JBG6A-44	Rocker Switch		1
	JBG8A-44	Toggle Switch		1
45	JBG6A-45	Switch Plate		1
	JBG8A-45	Switch Plate		1
46	JBG6A-46	Screw	3/16" x 1/4"	2
47	JBG6A-47	Base Plate		1
	JBG8A-47	Base Plate		1
49	JBG6A-49	Cross Screw	3/16" x 1/2"	4
	JBG8A-49	Cross Screw	3/16" x 1/2"	4

Index No	Part No	Description	Size	Qty
50	JBG6A-50	Eye Shield Plate - left		1
	JBG8A-50	Eye Shield Plate - left		1
52	TS-0720071	Lock Washer	1/4"	1
53	TS-0680021	Flat Washer	1/4"	3
54	JBG6A-54	Cross Screw	1/4" x 1/2"	1
	JBG8A-54	Cross Screw	1/4" x 1/2"	1
54A	JBG6A-54	Cross Screw	1/4" x 3/8"	2
55	JBG6A-55	Eye Shield Plate - left		1
	JBG8A-55	Eye Shield Plate - left		1
	JBG10A-55	Eye Shield Plate - left		1
57	JBG6A-57	Lock Hub (JBG-6A/8A)	1/4"	1
58	JBG6A-58	Cross Screw	3/16" x 3/8"	2
59	JBG6A-59	Eye Shield		1
	JBG6A-59A	Eye Shield Assembly		1
	JBG8A-59	Eye Shield		1
	JBG8A-59A	Eye Shield Assembly		1
60	JBG6A-60	Eye Shield Bracket Plate		1
61	JET-92	JET Logo	92x38mm	1
63	JBG6A-63	Direction Label		1
64	JBG6A-64	Rubber Foot (6A/8A)		4
65	JBG6A-65	Switch Seat		1
	JBG8A-65	Switch Seat		1
66	JBG6A-66	Centrifugal Start Switch		1
	JBG8A-66	Centrifugal Start Switch		1
67	LM000297	ID Label, JBG6-6		1
	LM000298	ID Label, JBG8-8		1
68	LM000299	Warning Label, JBG6M	2-3/4" x 4-1/4"	1

MultiTool Attachment:

.....577115 Contact Wheel (not shown) 2" x 3-1/2" 1

For other replacement parts on the Multitool attachment, contact Multitool at 800-660-0880.