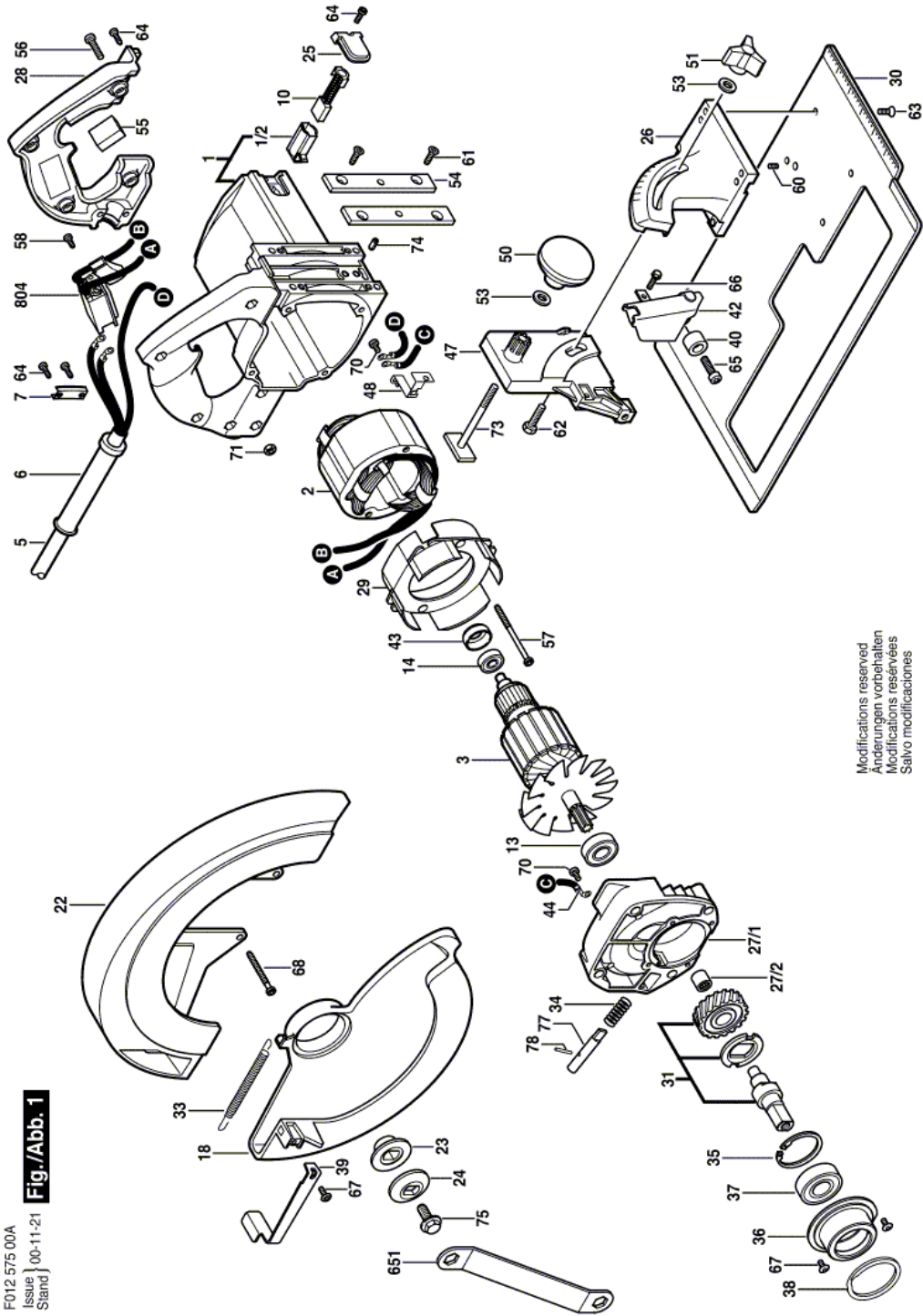


## Circular hand saw - F 012 X75 00A - 5750 TYPE 2

Item	Part Number	Description	Illustration	Price	Quantity	Price Group
1	2 610 905 335	Housing	1	-,-	1	-
1/2	2 610 357 062	Holder	1	-,-	1	-
2	2 610 357 056	Pole Shoe 120V	1	-,-	1	-
3	2 610 326 040	Armature 120V	1	-,-	1	-
5	2 610 910 166	Power supply cord	1	-,-	1	-
6	1 619 X08 308	Grommet	1	-,-	2	-
7	2 610 320 492	Clamp	1	-,-	1	-
10	2 610 326 083	Carbon Brush	1	-,-	1	-
13	2 610 015 361	Deep-Groove Ball Bearing	1	-,-	1	28
14	2 610 017 348	Deep-Groove Ball Bearing	1	-,-	1	23
18	2 610 326 053	Pivoting Blade Guard	1	-,-	1	-
22	2 610 326 065	Upper Housing	1	-,-	1	-
23	2 610 326 092	Washer	1	-,-	1	-
24	2 610 326 091	Washer	1	-,-	1	-
25	2 610 326 036	Brush-Cover	1	-,-	1	-
26	2 610 415 513	Support	1	-,-	1	-
27/1	2 610 326 048	Gear Housing	1	-,-	1	-
27/2	2 610 011 012	Needle-Roller Bearing	1	-,-	2	-
28	2 610 905 314	Handle Cover	1	-,-	1	-
29	2 610 328 484	Baffle	1	-,-	1	-
30	2 610 326 000	Guide Piece	1	-,-	4	-
31	2 610 326 004	Conversion Gear	1	-,-	1	-
33	2 610 355 552	Spring	1	-,-	1	-
34	2 610 018 274	Spring	1	-,-	1	-
35	2 610 325 747	Retaining snap ring	1	-,-	1	-
36	2 610 415 500	Hub	1	-,-	1	-
37	2 610 009 030	Bearing	1	-,-	1	-
38	2 610 326 001	Retaining snap ring	1	-,-	1	-
39	2 610 326 002	Lever	1	-,-	1	-
40	1 619 P01 532	End stop	1	-,-	1	11
42	2 610 350 688	Cover	1	-,-	1	-
43	1 619 P01 127	Rubber Ring	1	-,-	1	10
44	2 610 321 435	Connecting Cable	1	-,-	1	-

Item	Part Number	Description	Illustration	Price	Quantity	Price Group
47	2 610 326 034	Bracket	1	-,-	2	-
48	2 610 326 016	Bracket Holder	1	-,-	1	-
50	2 610 326 017	Knob	1	-,-	1	20
51	2 610 326 018	Knob	1	-,-	2	-
53	2 610 326 090	Washer	1	-,-	2	-
54	2 610 326 081	Strip	1	-,-	1	-
55	2 610 347 480	Dust Protection	1	-,-	1	-
56	2 610 348 084	Screw	1	-,-	4	-
57	2 610 348 082	Screw	1	-,-	6	-
58	2 610 346 204	Screw	1	-,-	1	-
60	2 610 326 107	Screw	1	-,-	1	-
61	2 610 326 028	Screw	1	-,-	1	-
62	2 610 015 253	Collar bolt	1	-,-	2	-
63	2 610 327 528	Screw	1	-,-	2	-
64	2 610 315 299	Screw	1	-,-	1	11
65	2 610 348 083	Screw	1	-,-	1	-
66	1 619 P01 491	Screw	1	-,-	1	10
67	1 619 X01 786	Contact Screw	1	-,-	6	10
68	2 610 348 085	Screw	1	-,-	1	-
70	1 619 X03 644	Screw	1	-,-	8	-
71	2 610 352 351	Self-locking nut	1	-,-	1	-
73	2 610 326 008	Collar bolt	1	-,-	1	-
74	2 610 326 011	Bolt	1	-,-	1	-
75	2 610 326 084	Stud	1	-,-	1	-
77	2 610 326 013	Bolt	1	-,-	1	-
78	2 610 018 273	Bolt	1	-,-	1	-
651	1 619 X01 144	Socket wrench	1	-,-	1	-
804	2 610 321 606	Toggle Switch	1	-,-	1	-

Illustration - Type E



Information subject to change without further notice.