



SERVICE PARTS LIST

BULLETIN NO.
54-37-0104

SPECIFY CATALOG NO. AND SERIAL NO. WHEN ORDERING PARTS		REVISED BULLETIN 54-37-0103	DATE FEB. '81
1 H.P. ROUTER			
CATALOG NO. 5620	STARTING SERIAL NO. 451-15700	WIRING INSTRUCTION 58-01-0702	

8 AMPS
23,000 R.P.M.

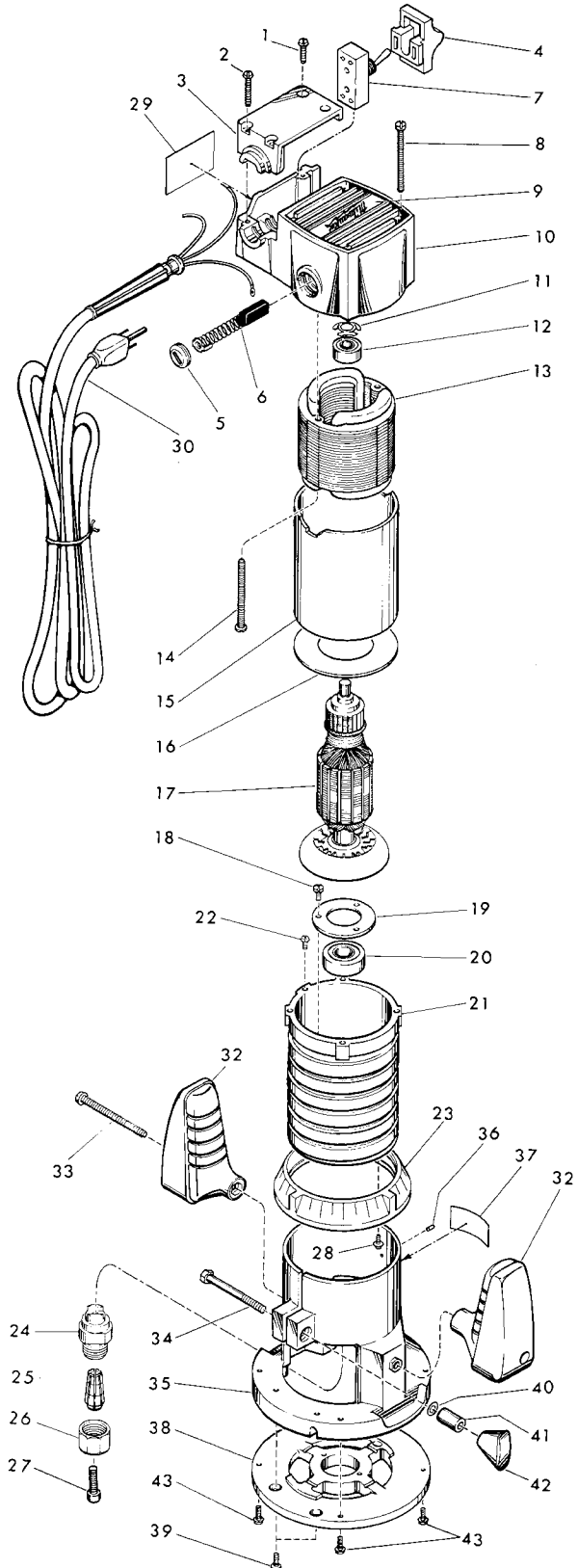
Catalog No. 5620 Includes:

5610 Router Motor Assy. (Figs. 1 thru 30) and
48-10-0070 Router Base Assy. (Figs. 32 thru 43)

FIG.	PART NO.	DESCRIPTION OF PART	NO. REQ.
	1	06-95-0135 6-32x11/16 Comb. Hd. Mach. Screw	(2)
★	2	06-95-0138 6-32x1-1/8 Pan Hd. Mach. Screw	(2)
★	3	31-17-0140 Cord Clamp	(1)
★	4	42-42-0190 Switch Button	(1)
★	5	23-44-0140 Brush Cap	(2)
	6	22-18-0440 Carbon Brush Assembly	(2)
★	7	23-66-1220 Toggle Switch	(1)
	8	06-95-0265 8-32x1-7/8 Comb. Hd. Mach. Screw	(4)
	9	12-98-6965 Identification Plate	(1)
★	10	31-12-0135 Upper Bearing Cap Assembly	(1)
★	11	06-97-5650 Finger Washer	(1)
★	12	02-04-0850 Ball Bearing	(1)
★	13	18-50-0030 120V. Field	(1)
★	14	06-95-0385 10-24x2-1/4 Comb. Hd. Mach. Screw	(2)
★	15	23-16-0680 Insulating Sleeve	(1)
	16	23-50-0070 Insulating Spacer	(1)
★	17	16-50-0030 120V. Armature	(1)
★	18	06-95-0211 8-32x3/8 Comb. Hd. Mach. Screw	(3)
	19	44-66-5300 Bearing Retainer	(1)
	20	02-04-1655 Ball Bearing	(1)
★	21	28-50-6172 Motor Housing	(1)
★	22	06-81-8625 6-32x1/4 Ground Screw	(1)
	23	31-58-0010 Adjusting Ring	(1)
	24	45-10-0060 Chuck Shank	(1)
	25	48-66-0980 1/4" Collet	(1)
	26	44-40-0465 Collet Nut	(1)
	27	06-75-3005 1/4-20x5/8 Socket Hd. Screw	(1)
★	28	06-81-5210 6-32x1/4" Washer Hd. Screw	(1)
	29	12-98-0100 Nameplate	(1)
	30	22-64-0386 Cord Set	(1)
	31	48-10-0070 Router Base (Includes Fig. Nos. 32 thru 43)	(1)
	32	31-44-0275 Handle	(2)
	33	06-95-0390 10-24x2-3/8 Comb. Hd. Mach. Screw	(2)
	34	06-75-0230 1/4-20x1-3/4 Hex. Hd. Screw	(1)
	35	28-06-0825 Base Assembly (Includes Fig. Nos. 36 and 37)	(1)
	36	06-65-0575 3/32x5/16 Long Pin	(1)
★	37	12-98-7078 Router Base Nameplate	(1)
	38	31-06-0070 Sub Base	(1)
	39	06-95-0310 10-32x3/8 Comb. Hd. Mach. Screw	(2)
	40	06-97-5600 Lock Washer	(1)
	41	45-36-0680 Locking Knob Spacer	(1)
	42	43-98-0070 Locking Knob	(1)
★	43	06-95-0209 8-32x5/8 Pan Hd. Taptite Screw	(4)

PARTS NOT SHOWN

49-96-4070	7/8" Open End Wrench	(1)
49-96-4075	1" Open End Wrench	(1)
12-98-7082	Caution Plate	(1)



MILWAUKEE ELECTRIC TOOL CORPORATION
13135 W. LISBON RD., BROOKFIELD, WIS. 53005