

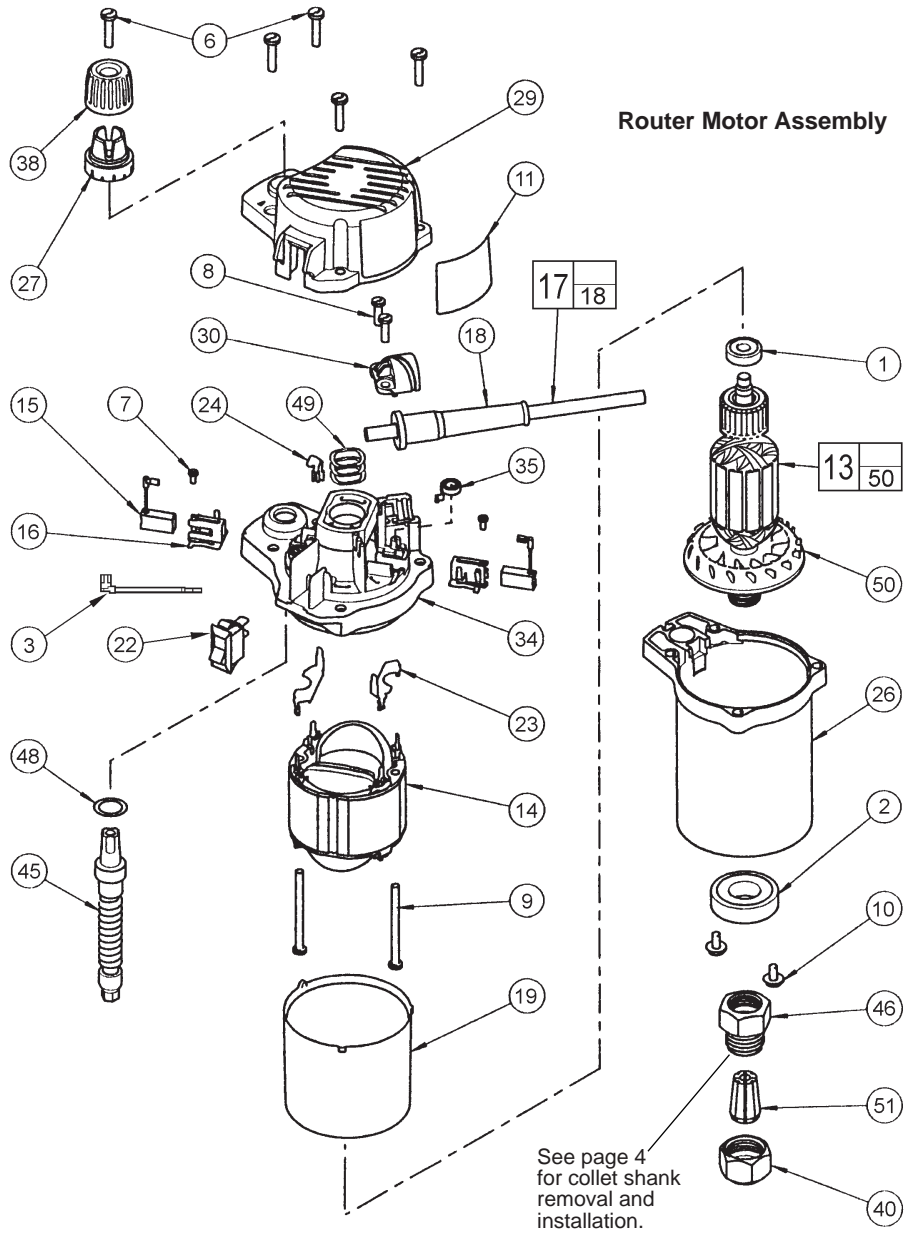


# SERVICE PARTS LIST

**BULLETIN NO.**  
54-37-0126

SPECIFY CATALOG NO. AND SERIAL NO. WHEN ORDERING PARTS		REVISED BULLETIN 54-37-0125	DATE Apr. 2010
<b>1-3/4 H.P. BODY GRIP ROUTER</b>			
CATALOG NO. 5615-20/5615-29	SERIAL NUMBER <b>279B</b>	WIRING INSTRUCTION <b>58-01-0705</b>	

**EXAMPLE:**  
00 0 Component Parts (Small #)  
Are Included When Ordering  
The Assembly (Large #).  
★ = Part number change from  
previous service parts list.



See page 4  
for collet shank  
removal and  
installation.

FIG.	PART NO.	DESCRIPTION OF PART	QTY.
	1	02-04-0852 Ball Bearing	(1)
★	2	02-04-2006 Ball Bearing	(1)
★	3	23-94-0040 Leadwire Assembly	(1)
	6	06-82-5574 10-24 x 7/8" Pan Hd. Slit. Tapt. T-25	(5)
	7	06-82-7212 4-20 x 1/4" Pan Hd. Slit. Plast. T-10	(2)
	8	06-82-7270 8-16 x 5/8" Pan Hd. Slit. Plast. T-20	(2)
	9	06-82-7455 8-16 x 2-3/8" Pan Hd. Slit. Plast. T-20	(2)
	11	12-20-0145 Service Nameplate Kit	(1)
★	13	16-30-0011 Armature	(1)
	14	18-30-1010 Field	(1)
	15	22-16-0410 Carbon Brush	(2)
	16	22-22-0165 Brush Tube	(2)
	17	22-64-7777 Cord Set Assembly	(1)
	18	44-76-0210 Cord Protector	(1)
	19	23-16-0405 Field Insulator	(1)
★	22	23-66-2280 Rocker Switch	(1)
	23	23-74-0025 Field Terminal	(2)
	24	23-74-0055 Connector Terminal	(1)
	26	28-50-0105 Motor Housing	(1)
	27	31-01-0025 Depth Scale	(1)
	29	31-15-0065 Motor Cover	(1)
	30	31-17-0070 Cord Clamp	(1)
★	34	31-50-0106 Motor Frame	(1)

FIG.	PART NO.	DESCRIPTION OF PART	QTY.
	35	40-50-0190 Brush Spring	(2)
★	38	43-98-0531 Depth Knob	(1)
	40	44-40-0095 Collet Nut (2 supplied with tool)	(1)
	45	45-08-0030 Depth Shaft Assembly	(1)
★	46	45-10-0081 Collet Shank (See reverse side for servicing)	(1)
	48	45-88-0045 Washer	(1)
	49	45-88-0577 Wave Spring Washer	(3)
	50	22-84-0380 Fan Assembly	(1)
	51	48-66-0985 1/4" Collet	(1)
	51	48-66-1010 1/2" Collet	(1)
		49-96-0365 1-1/8" Open End Wrench (Not Shown)	(2)

**FIG. 16,34 NOTES:**  
When servicing the motor frame (34) and the brush tube (16) has to be removed, replace with a new brush tube.

48-10-5615  
Router BodyGrip Assembly

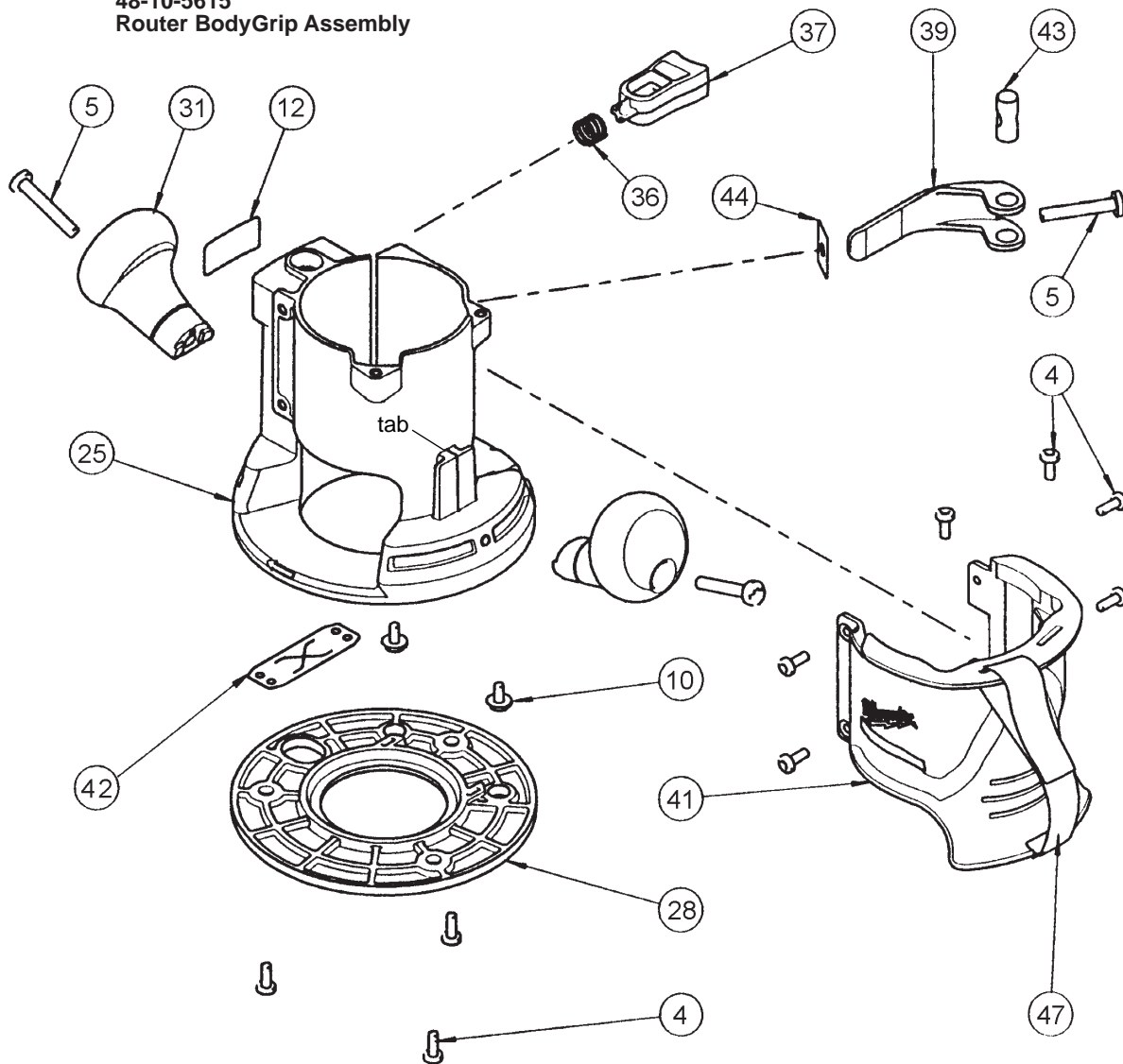


FIG.	PART NO.	DESCRIPTION OF PART	QTY.
4	06-82-5314	10-24 x 1/2" Slit. Pan Hd. Tapt. T-25	(9)
5	06-82-5514	1/4-20 x 1-1/2" Slit. Pan Hd. Tapt. T-30	(3)
10	06-82-8865	10-32 x 7/16" Pan Hd. Tapt. Sems T-25	(4)
12	12-25-0235	Nameplate	(1)
25	26-06-0100	Base	(1)
28	49-54-1045	Sub Base	(1)
31	31-44-0130	Knob Handle	(2)
36	40-50-4005	Compression Spring	(1)
★ 37	42-42-0126	Release Button	(1)
39	44-10-0435	Base Clamp Lever	(1)
41	44-52-0020	Body Grip	(1)
★ 42	45-12-0015	Dust Shield	(1)
43	44-60-0095	Thru Pin	(1)
44	44-66-0035	Wear Plate	(1)
47	45-56-0225	Handle Strap Assembly	(1)

**FIG. NOTES:**

- 5,39 Clamping force for the base clamp lever (39) is adjusted with base clamp screw (5). Tighten the screw using 10-20 lbs. force to close the lever to the locked position. Motor unit must be in base when checking force.
- 25,36,37 To service the release button (37) and the compression spring (36) a long, thin tool like a flat blade screwdriver must be used. From the bottom of the base (25), insert the screwdriver into the cavity located under the release button. Press on the button detent to release.
- 25,41,47 The metal clip from the handle strap (47) is to be placed around the tab on the base (25). The body grip (41) is to be placed onto the base from the top so that the cavity on the inside of the body grip slips over the tab on the base, securing the handle strap.
- 39,43 Apply a thin coat of "L" grease, No. 49-08-4170, to the pivot surface areas of the base clamp lever (39). Apply a thin coat of grease to the surface of the thru pin (43).

**48-10-5600  
Router Plunge  
Base Assembly**

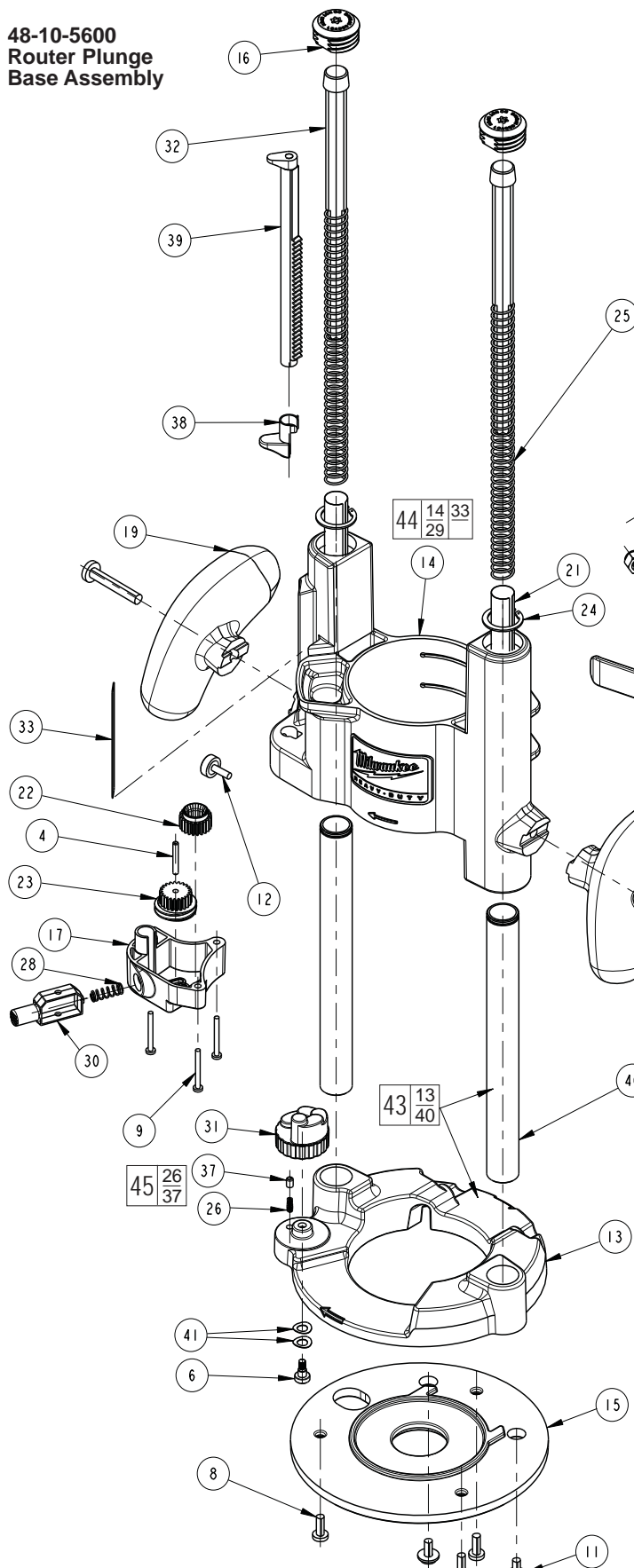


FIG.	PART NO.	DESCRIPTION OF PART	QTY.
1	05-81-1005	Screw 8-32 x .394 T20	(1)
2	06-14-0080	Bolt 1/4-20 x 1.75 T30	(1)
3	06-57-6075	Lock Nut	(1)
★ 4	06-65-0700	Gear Pin	(1)
6	06-75-0410	Shoulder Bolt M4 T25	(1)
7	06-81-1980	Plunge Lock Screw	(1)
8	06-82-5314	10-24 x .5 Pan Tap Torx	(3)
9	06-82-5315	Screw ST M3 x 26.5 mm T10	(3)
10	06-82-5514	T30, 1/4 - 20 x 1.50 Taptite	(2)
11	06-82-8865	Slotted Torx Taptite Screw	(2)
12	06-87-0100	Depth Rod Locking Screw	(1)
13	-----	Base	(1)
14	-----	Motor Carriage	(1)
15	-----	Subbase (See Chart)	(1)
16	31-12-0380	Spring Cap	(2)
17	31-40-0190	Gear Housing	(1)
18	31-44-2530	Right Handle	(1)
19	31-44-2535	Left Handle	(1)
20	31-52-0120	Plunge Lock Lever	(1)
21	31-55-0500	Spring Shield Tube	(2)
22	32-40-2380	Gear with Hex	(1)
23	32-40-2385	Gear with Screw	(1)
24	34-60-3705	Retaining Ring	(2)
25	40-50-1395	Plunge Spring	(2)
26	-----	Spring	(1)
27	40-50-1410	Torsion Spring	(1)
28	40-50-1415	Spring	(1)
29	-----	Bushing (not shown)	(4)
30	42-42-1050	Gear Release Button	(1)
31	42-46-0250	Turret	(1)
32	43-56-0915	Spring Guide	(2)
33	43-82-0175	Scale	(1)
34	44-10-0435	Base Clamp Lever	(1)
35	44-60-0095	Pin, Thru	(1)
36	44-66-0035	Wear Plate	(1)
37	-----	Detent Pin	(1)
38	44-72-0100	Depth Rod Pointer	(1)
39	44-94-0460	Depth Stop Rod	(1)
40	-----	Plunge Rod	(2)
★ 41	45-88-0995	Spring Washer	(2)
42	45-88-0996	Spring Washer	(1)
43	14-46-5600	Base and Plunge Rod Kit	(1)
44	14-46-5605	Motor Carriage Kit	(1)
45	14-46-5610	Spring Assembly	(1)

**The following sub-bases (15) are compatible with this base:**

Cat. No.	Outside dia.	Center hole dia.	Color
49-54-1027	6"	1-3/16"	Clear
49-54-1028	6"	2-1/2"	Clear
49-54-1040	6"	1-3/16"	Black
49-54-1045	6"	2-1/2"	Black

**WARNING! Spring Caps (16) are under pressure from Plunge Springs (25) and could become projectiles when loosened. Use caution when removing. Eye injury could occur. Always wear safety glasses.**

**Plunger Lock Screw (7) is LH Thread – tightens in counter-clockwise direction**

14, 16, 25 Caution! Before removing Spring Caps (16) always release/bring the Motor Carriage (14) to the upward most height setting to minimize spring (25) tension.

14, 16, 25 If the Plunge Springs (25) or Motor Carriage (14) need to be serviced, remove Spring Caps (16) with a T-40 Tamper Proof style driver. Note: Always cover / hold your hand over the spring caps (16) when removing or installing springs (25). Always wear safety glasses.

34, 35 Apply a thin coat of "L" grease, No. 49-08-4170, to the pivot surface areas of the base clamp lever (34). Apply a thin coat of grease to the surface of the thru pin (35).

14, 20, 24, 40 To aid in the removal of Retaining Rings (24) from the Plunger Rods (40). (springs (25) and plunger caps (16) removed previously) Push Plunge Lock Lever (20) down and Lower Motor Carriage (14) down until Retaining Rings (24) are just below the internal Spring Cap threads inside the Motor Carriage.