



SERVICE PARTS LIST

BULLETIN NO.
54-24-0242

SPECIFY CATALOG NO. AND SERIAL NO. WHEN ORDERING PARTS		REVISED BULLETIN 54-24-0241	DATE Nov. '87
3/8" PISTOL HAMMER DRILL			
CATALOG NO. 5392-1	STARTING SERIAL NO. 665-91000	WIRING INSTRUCTION 58-01-0018	

EXAMPLE:

00	0
----	---

 Component Parts (Small #) Are Included
 When Ordering The Assembly (Large #).

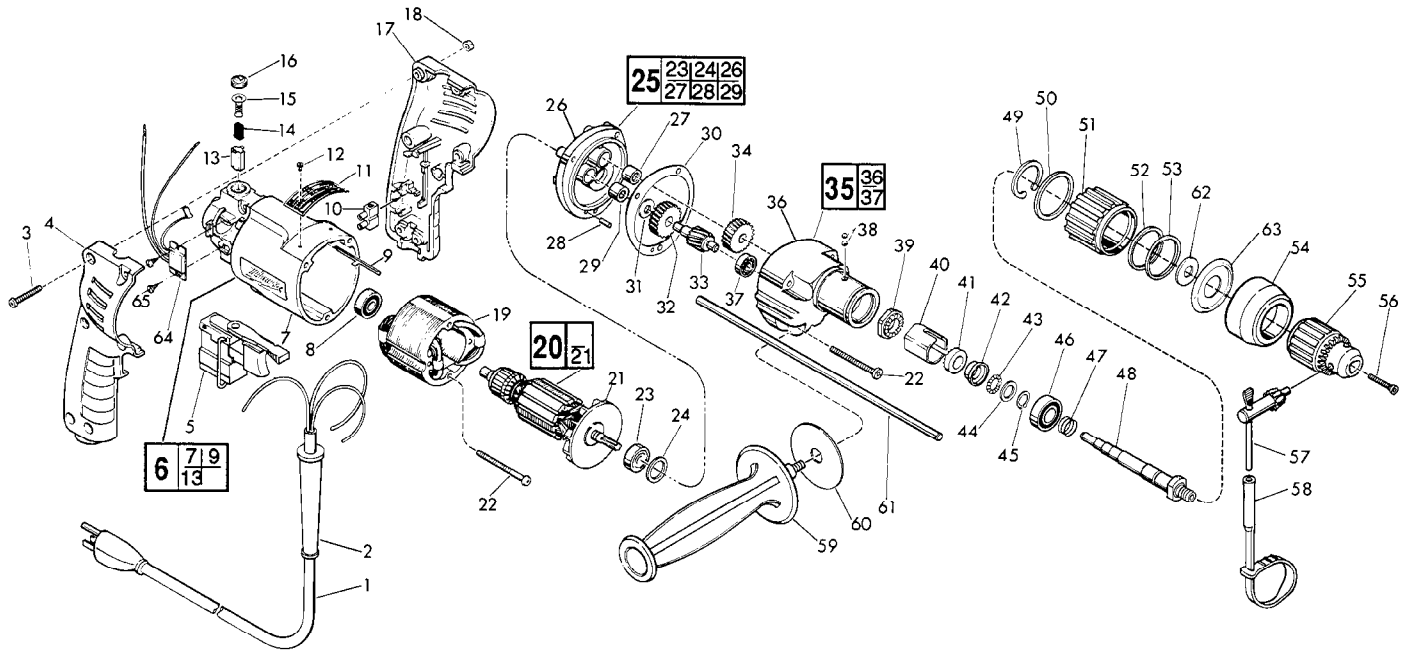


FIG. PART NO.	DESCRIPTION OF PART	NO. REQ.
1	22-64-1120 Cord Set	(1)
2	44-76-0130 Cord Protector	(1)
★ 3	06-82-2361 8-32 x 15/16" Slit. Plast. Torx Screw	(6)
4	31-44-1130 Right Handle Half	(1)
★ 5	23-66-1655 Speed Control Switch	(1)
★ 6	14-38-0376 Motor Housing Assembly	(1)
★ 7	31-50-0347 Motor Housing	(1)
8	02-04-0645 Ball Bearing	(1)
9	44-60-0530 Ground Pin	(1)
10	22-56-0456 Terminal Block	(1)
11	12-99-0395 Nameplate Blank	(1)
12	06-85-0200 Nameplate Screw	(2)
13	22-20-0530 Brush Tube	(2)
14	22-16-0275 Carbon Brush	(2)
15	23-52-0210 Brush Spring Assembly	(2)
16	23-44-0120 Brush Retaining Screw	(2)
17	31-44-1140 Left Handle Half	(1)
18	06-55-0835 8-32 Hex Nut	(6)
19	18-10-0130 120 Volt Field	(1)
20	16-10-0545 120 Volt Armature	(1)
21	22-84-0440 Fan Assembly	(1)
★ 22	06-82-7393 7-18x2" Pan Hd. Slit. Plast. Torx Screw	(5)
23	02-04-0848 Ball Bearing	(1)
24	45-88-0355 Fiber Washer	(1)
25	28-28-1710 Diaphragm Assembly	(1)
26	28-28-1705 Diaphragm	(1)
27	02-50-1610 Needle Bearing	(1)
28	06-65-0800 Groove Pin	(1)
29	02-50-1640 Needle Bearing	(1)
30	43-44-0690 Gasket	(1)
31	45-88-7721 Thrust Washer	(1)
32	32-40-1940 Intermediate Gear	(1)
33	36-66-4360 Intermediate Pinion Shaft	(1)
34	32-75-3170 Spindle Gear	(1)
35	28-14-1690 Gear Case Assembly	(1)
36	28-14-1685 Gear Case	(1)
37	02-04-0640 Ball Bearing	(1)
38	02-02-0180 3/16" Steel Ball	(6)

FIG. PART NO.	DESCRIPTION OF PART	NO. REQ.
39	44-84-0175 Fixed Ratchet	(1)
40	45-36-1220 Bearing Spacer	(1)
41	44-84-0185 Rotating Ratchet	(1)
★ 42	45-36-1211 Shift Spacer	(1)
43	02-02-0120 1/8" Steel Ball	(15)
44	45-88-0930 Thrust Washer	(1)
45	34-60-0950 Retaining Ring	(1)
46	02-08-0510 Ball Bearing	(1)
47	40-50-0220 Compression Spring	(1)
48	38-50-5510 Spindle	(1)
49	34-80-2550 Internal Retaining Ring	(1)
50	34-40-4040 O-Ring	(1)
51	31-58-0050 Locking Collar	(1)
52	34-40-1500 O-Ring	(1)
53	34-60-2125 Retaining Ring	(1)
54	49-62-0090 Hammer Dust Shield	(1)
55	48-66-0795 3/8" Chuck	(1)
★ 56	45-04-0750 Chuck Screw	(1)
57	48-66-3240 Chuck Key	(1)
58	48-66-4040 Key Holder	(1)
59	43-62-0905 Side Handle	(1)
60	45-88-7930 Washer	(1)
61	44-94-0161 Depth Rod	(1)
★ 62	45-88-1040 Washer	(1)
★ 63	44-86-0510 Retainer	(1)
★ 64	14-20-0240 Remote Electronic Assembly	(1)
★ 65	06-82-7212 4-20x1/4" Plastite Torx Screw	(2)
	10-98-5986 Warning Label	(1)

- FIG. NOTES**
 23 Press to .025 above casting surface. Seal towards armature.
 56 Apply type 242 blue locite and torque to 40-45 in./lbs.
FIG. LUBRICATION
 36 2oz. type "E" grease, No. 49-08-4121.
 39,41 1/2 tsp. type "U" grease, No. 49-08-0150.
 42,43 1/4 tsp. type "U" grease, No. 49-08-0150.

MILWAUKEE ELECTRIC TOOL CORPORATION
 13135 W. LISBON RD., BROOKFIELD, WI 53005