



SERVICE PARTS LIST

BULLETIN NO.
54-24-0240

SPECIFY CATALOG NO. AND SERIAL NO. WHEN ORDERING PARTS		REVISED BULLETIN	DATE Feb. '85
3/8" HAMMER DRILL		WIRING INSTRUCTION	
CATALOG NO. 5392-1	STARTING SERIAL NO. 665-1001	58-01-0015	

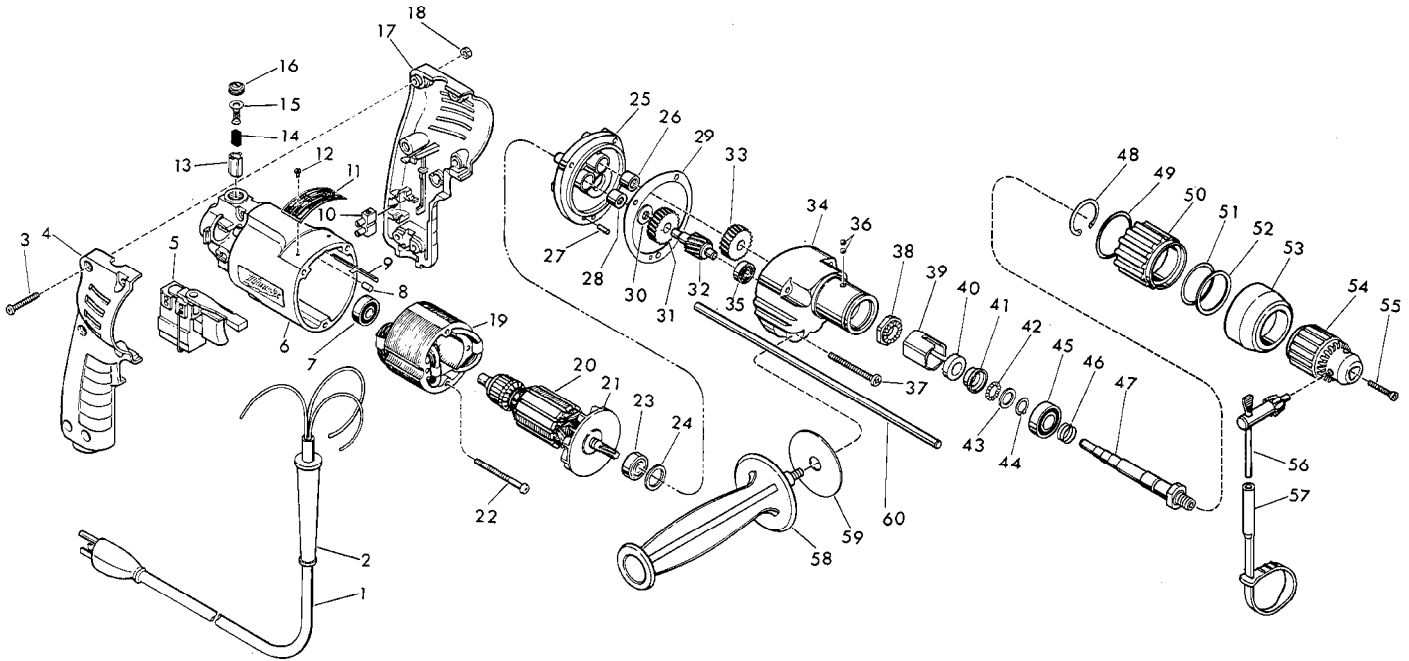


FIG.	PART NO.	DESCRIPTION OF PART	NO. REQ.	FIG.	PART NO.	DESCRIPTION OF PART	NO. REQ.
1	22-64-1120	Cord Set	(1)	38	44-84-0175	Fixed Ratchet	(1)
2	44-76-0130	Cord Protector	(1)	39	45-36-1220	Bearing Spacer	(1)
3	06-81-0473	8-32 x 1" Pan Hd. Pozidriv Screw	(6)	40	44-84-0185	Rotating Ratchet	(1)
4	31-44-1130	Right Handle Half	(1)	41	45-36-1210	Shift Spacer	(1)
5	23-66-1390	Speed Control Switch	(1)	42	02-02-0120	1/8" Steel Ball	(15)
6	31-50-0340	Motor Housing	(1)	43	45-88-0930	Thrust Washer	(1)
7	02-04-0710	Ball Bearing	(1)	44	34-60-0950	Retaining Ring	(1)
8	45-30-0120	Ball Bearing Retaining Slug	(1)	45	02-08-0510	Ball Bearing	(1)
9	44-60-0530	Ground Pin	(1)	46	40-50-0220	Compression Spring	(1)
10	22-56-0455	Terminal Block	(1)	47	38-50-5510	Spindle	(1)
11	12-99-0395	Nameplate Blank	(1)	48	34-80-2550	Internal Retaining Ring	(1)
12	06-85-0200	Nameplate Screw	(2)	49	34-40-4040	O-Ring	(1)
13	22-20-0530	Brush Tube	(2)	50	31-58-0050	Locking Collar	(1)
14	22-16-0270	Carbon Brush	(2)	51	34-40-1500	O-Ring	(1)
15	23-52-0210	Brush Spring Assembly	(2)	52	34-60-2125	Retaining Ring	(1)
16	23-44-0120	Brush Retaining Screw	(2)	53	49-62-0090	Hammer Dust Shield	(1)
17	31-44-1140	Left Handle Half	(1)	54	48-66-0795	3/8" Chuck	(1)
18	06-55-0835	8-32 Hex Nut	(6)	55	06-81-2670	10-32 x 7/8" Socket Hd. Screw - L.H. Thread	(1)
19	18-10-0130	120 Volt Field	(1)	56	48-66-3240	Chuck Key	(1)
20	16-10-0540	120 Volt Armature (Incl. Fig. No. 21)	(1)	57	48-66-4040	Key Holder	(1)
21	22-84-0440	Fan Assembly	(1)	58	43-62-0905	Side Handle	(1)
22	06-95-0180	7-18 x 2" Pan Hd. Plastite Screw	(2)	59	45-88-7930	Washer	(1)
23	02-04-0848	Ball Bearing	(1)	60	44-94-0161	Depth Rod	(1)
24	45-88-0355	Fiber Washer	(1)	61	10-98-5987	Warning Label (Not Shown)	(1)
25	28-28-1705	Diaphragm	(1)				
26	02-50-1610	Needle Bearing	(1)				
27	06-65-0800	Groove Pin	(1)				
28	02-50-1640	Needle Bearing	(1)				
29	43-44-0690	Gasket	(1)				
30	45-88-7721	Thrust Washer	(1)				
31	32-40-1940	Intermediate Gear	(1)				
32	36-66-4360	Intermediate Pinion Shaft	(1)				
33	32-75-3170	Spindle Gear	(1)				
34	28-14-1685	Gear Case	(1)				
35	02-04-0640	Ball Bearing	(1)				
36	02-02-0180	3/16" Steel Ball	(6)				
37	06-95-0145	7 x 1-3/4" Pan Hd. Pozidriv Screw	(3)				

NOTES

- FIG. 23 Press To .025 Above Casting Surface
 FIG. 55 Apply Type 271 Red Loctite & Torque To 40-45 In. Lbs.

LUBRICATION

- 2 Oz. Of Type E Grease In Gearcase
 1/2 Tsp. Of 49-08-0150 Grease To Fig. 38 & 40
 1/4 Tsp. Of 49-08-0150 Grease To Fig. 41 & 42