



# SERVICE PARTS LIST

**BULLETIN NO.**  
**54-24-0175**

SPECIFY CATALOG NO. AND SERIAL NO. WHEN ORDERING PARTS		REVISED BULLETIN	DATE
<b>1/2" REV. MAGNUM HAMMER-DRILL</b>		54-24-0174	July '94
CATALOG NO. <b>5374-1</b>	STARTING SERIAL NO. <b>715-31936</b>	WIRING INSTRUCTION <b>58-01-0077</b>	

**EXAMPLE:**  
Component Parts  
(Small #) Are Included  
When Ordering The  
Assembly (Large #).

00  
0

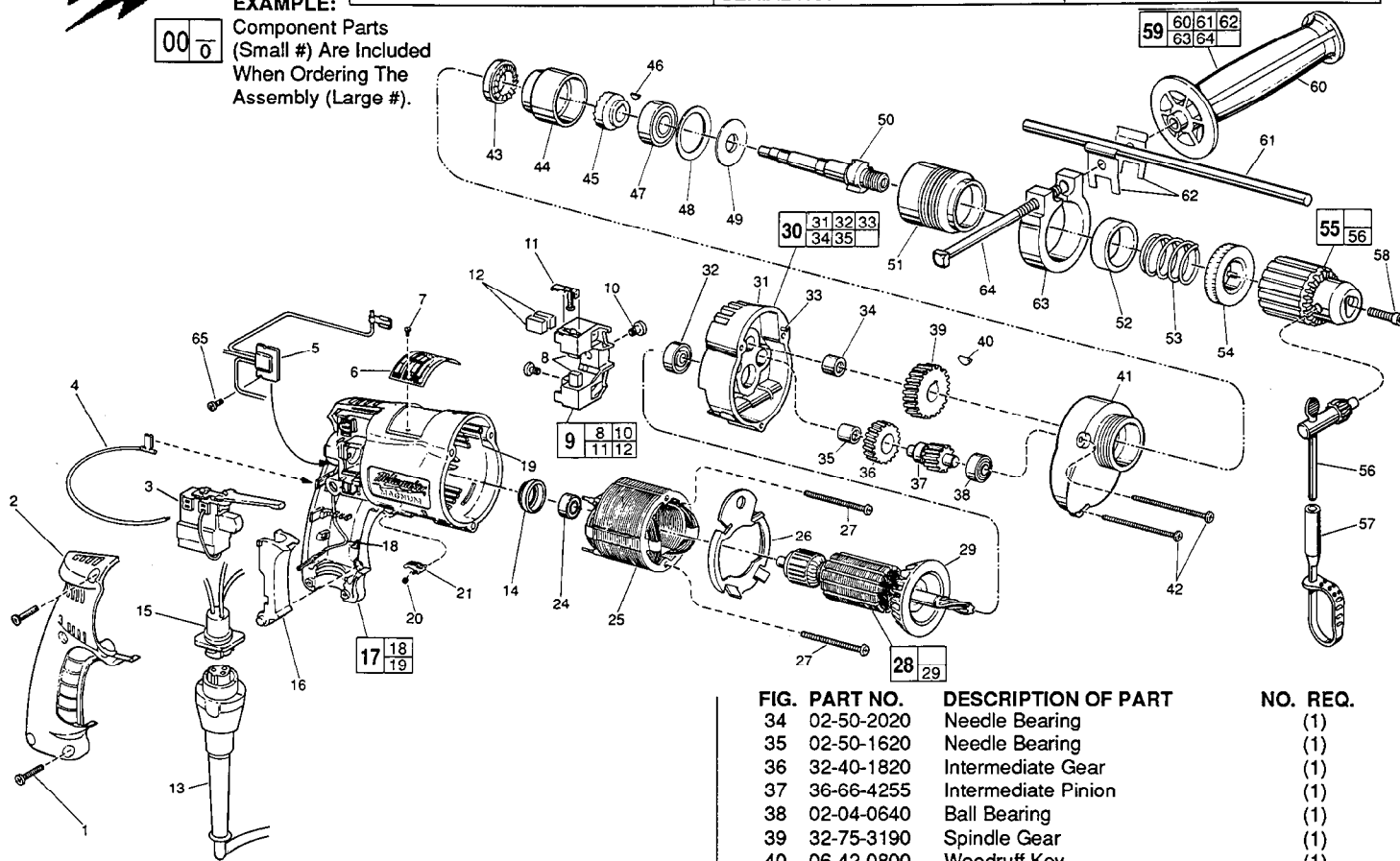


FIG.	PART NO.	DESCRIPTION OF PART	NO. REQ.
1	06-82-7266	7-18 x 11/16" Plastite Screw T-20	(5)
2	31-15-0401	Handle Cover	(1)
3	23-66-1665	Trigger Speed Control Reversing Switch	(1)
4	23-94-6245	2-1/4" Lead Assembly	(1)
5	14-20-0250	Remote Electronic Assembly	(1)
6	12-99-0225	Nameplate Blank	(1)
7	06-85-0200	Nameplate Screw	(2)
8	22-16-0300	Carbon Brush	(2)
9	22-22-0356	Brush Holder Assembly	(1)
10	31-75-0040	Brush Holder Screw	(2)
11	22-20-0355	Brush Spring Assembly	(2)
12	22-16-0300	Carbon Brush (Spares)	(2)
13	48-76-4008	8 Foot Quik-Lok Cord Set	(1)
14	22-72-0100	Bearing Cup	(1)
15	22-56-0630	Pin Housing Assembly	(1)
16	45-72-0080	Trigger	(1)
17	14-38-0540	Motor Housing Assembly	(1)
18	23-94-9960	Ground Wire Assembly	(1)
19	44-60-1290	Grounding Pin	(1)
20	40-50-0085	Lock Button Spring	(1)
21	42-42-0150	Lock Button	(1)
24	02-04-0645	Ball Bearing	(1)
25	18-11-0075	120 Volt Field	(1)
26	42-14-0345	Baffle	(1)
27	06-82-7393	7 - 18x 2" Pan Hd. Screw T-20	(2)
28	16-10-0500	120 Volt Armature	(1)
29	22-84-0650	Fan Assembly	(1)
★ 30	14-13-0465	Diaphragm Assembly	(1)
31	-----	Diaphragm	(1)
32	02-04-0847	Ball Bearing	(1)
33	06-65-0825	1/8 x 1/2" Groove Pin	(1)

FIG.	PART NO.	DESCRIPTION OF PART	NO. REQ.
34	02-50-2020	Needle Bearing	(1)
35	02-50-1620	Needle Bearing	(1)
36	32-40-1820	Intermediate Gear	(1)
37	36-66-4255	Intermediate Pinion	(1)
38	02-04-0640	Ball Bearing	(1)
39	32-75-3190	Spindle Gear	(1)
40	06-42-0800	Woodruff Key	(1)
41	28-14-1795	Gear Case	(1)
42	06-82-7411	7-18 x 2-3/16" Pan Hd. Plastite T-20	(3)
43	44-84-0165	Fixed Ratchet	(1)
44	42-52-0250	Bearing Housing	(1)
45	44-84-0160	Rotating Ratchet	(1)
46	06-42-1200	Woodruff Key	(1)
47	02-04-1536	Ball Bearing	(1)
48	45-88-7350	Bearing Retainer Washer	(1)
49	45-88-7365	Spring Support Washer	(1)
50	38-50-5575	Spindle	(1)
51	45-22-0405	Sleeve (Left Hand Thread)	(1)
52	45-88-7375	Felt Washer	(1)
53	40-50-4950	Spring	(1)
54	42-76-0200	Locking Collar	(1)
55	48-66-1365	1/2" Reversing Chuck	(1)
56	48-66-3280	Chuck Key	(1)
57	48-66-4040	Key Holder	(1)
58	06-75-3150	1/4-20 x 1" Socket Hd. Screw L.H. Thread	(1)
59	14-34-0250	Side Handle Assembly	(1)
60	43-62-0865	Side Handle	(1)
61	44-94-0161	Depth Rod	(1)
62	42-68-0390	Depth Gauge Clamp	(2)
63	25-82-0140	Clamping Collar	(1)
64	42-32-0161	5/16-18 x 3-1/2" Square Hd. Bolt	(1)
65	06-82-7212	4-20x1/4" Pan Hd. Plastite T-10	(1)
	10-98-5986	Warning Label	(1)

**FIG. LUBRICATION**  
41 1-1/2 Oz. Type "E" Grease, No. 49-08-4122.  
43,45 Apply Thin Coat "U" Grease, No. 49-08-0150,  
To Ratchet Teeth.

**MILWAUKEE ELECTRIC TOOL CORPORATION**  
13135 W. LISBON RD., BROOKFIELD, WI 53005