

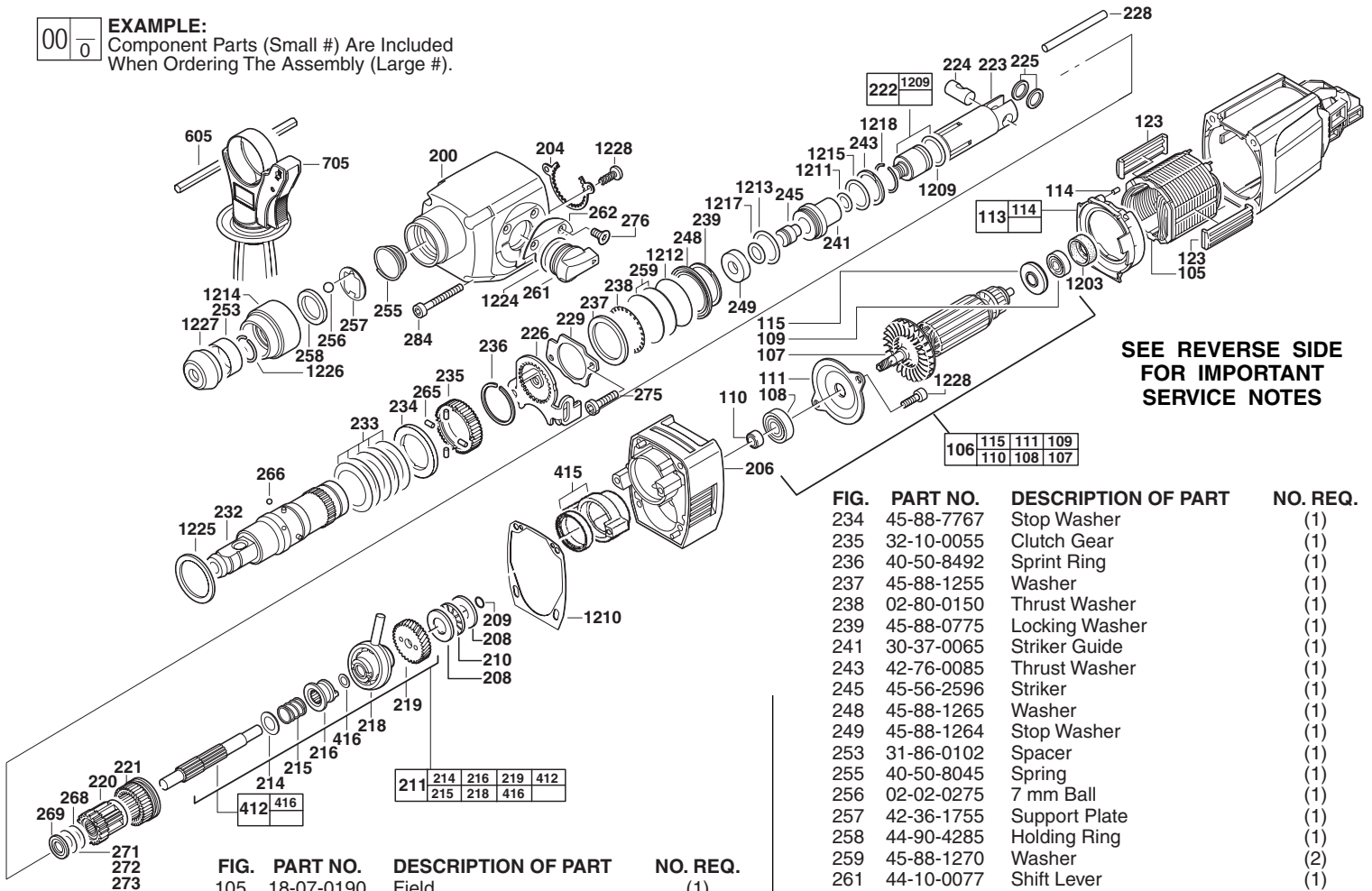


SERVICE PARTS LIST

BULLETIN NO.
54-24-5370

SPECIFY CATALOG NO. AND SERIAL NO. WHEN ORDERING PARTS		REVISED BULLETIN	DATE
1" D-HANDLE SDS ROTARY HAMMER			Aug. 2006
CATALOG NO.	5369-21	STARTING SERIAL NO.	B04A
		WIRING INSTRUCTION 58-01-1285	

EXAMPLE:
Component Parts (Small #) Are Included
When Ordering The Assembly (Large #).



**SEE REVERSE SIDE
FOR IMPORTANT
SERVICE NOTES**

FIG.	PART NO.	DESCRIPTION OF PART	NO. REQ.
	105	18-07-0190 Field	(1)
	106	16-07-0230 Armature Assembly	(1)
	107	22-84-0940 Fan	(1)
	108	02-04-0063 Ball Bearing 6000 2RSL	(1)
	109	02-04-1855 Bearing	(1)
	110	45-22-0056 Sleeve	(1)
	111	42-92-0070 Bearing Cover	(1)
	113	31-05-0230 Air Deflector Ring	(1)
	114	45-30-0210 Retaining Slug	(4)
	115	45-88-8411 Washer	(1)
	123	42-70-1100 Field Centering Clip	(2)
	200	31-40-0170 Gear Case	(1)
	204	44-86-0625 Splined Retainer	(1)
	206	28-28-0040 Diaphragm Plate	(1)
	208	45-88-8412 Washer	(2)
	209	34-40-4440 O-Ring	(1)
	210	02-80-0105 Needle Bearing	(1)
	211	32-75-0071 Gear	(1)
	214	45-88-1250 Washer	(1)
	215	40-50-8897 Spring	(1)
	216	45-22-0302 Coupling Sleeve	(1)
	218	36-92-0510 Wobble Plate Assembly	(1)
	219	32-60-2640 Gear	(1)
	220	32-60-2157 Offset Gear	(1)
	221	32-60-2165 Internal Gear	(1)
	222	44-82-0065 Ram	(1)
	223	44-62-0157 Piston	(1)
	224	44-60-1405 Wrist Pin	(1)
	225	45-88-1180 Disc	(2)
	226	44-90-4500 Shift Ring	(1)
	228	44-60-1485 Pin	(1)
	229	44-66-6055 Retaining Plate	(1)
	232	38-50-6043 Spindle Assembly	(1)
	233	40-50-7977 Belleville Spring	(5)

FIG.	PART NO.	DESCRIPTION OF PART	NO. REQ.
	234	45-88-7767 Stop Washer	(1)
	235	32-10-0055 Clutch Gear	(1)
	236	40-50-8492 Sprint Ring	(1)
	237	45-88-1255 Washer	(1)
	238	02-80-0150 Thrust Washer	(1)
	239	45-88-0775 Locking Washer	(1)
	241	30-37-0065 Striker Guide	(1)
	243	42-76-0085 Thrust Washer	(1)
	245	45-56-2596 Striker	(1)
	248	45-88-1265 Washer	(1)
	249	45-88-1264 Stop Washer	(1)
	253	31-86-0102 Spacer	(1)
	255	40-50-8045 Spring	(1)
	256	02-02-0275 7 mm Ball	(1)
	257	42-36-1755 Support Plate	(1)
	258	44-90-4285 Holding Ring	(1)
	259	45-88-1270 Washer	(2)
	261	44-10-0077 Shift Lever	(1)
	262	44-66-0101 Plate	(1)
	265	44-96-0101 Roller	(4)
	266	02-02-0110 4 mm Ball	(4)
	268	45-88-1182 Washer	(1)
	269	45-88-1183 Washer	(1)
	271	45-88-1184 Washer	(1)
	272	45-88-1185 Washer	(1)
	273	45-88-1182 Washer	(1)
	275	05-74-0700 Screw	(2)
	276	05-74-0697 Screw	(2)
	284	05-74-0710 Screw	(4)
	412	36-66-0130 Intermediate Shaft	(1)
	415	42-40-0015 Bearing Housing Assembly	(1)
	416	45-88-8414 Washer	(1)
	605	43-46-0172 Depth Gauge	(1)
	705	49-15-5300 Side Handle Assembly	(1)
	1203	45-22-0057 Rubber Sleeve	(1)
	1209	34-40-5359 O-Ring	(1)
	1210	43-44-0375 Gasket	(1)
	1211	34-40-4247 O-Ring	(1)
	1212	34-40-4459 O-Ring	(1)
	1213	34-40-4456 O-Ring	(1)
	1214	42-76-0275 Chuck Collar	(1)
	1215	34-40-4249 O-Ring	(1)
	1217	34-40-0130 O-Ring	(1)
	1218	44-90-4415 Retaining Ring	(1)
	1224	34-40-0132 O-Ring	(1)
	1225	45-06-0215 Felt Washer	(1)
	1226	44-90-0375 Snap Ring - External	(1)
	1227	42-52-0065 Dust Cap	(1)
	1228	05-74-0717 Screw	(4)

MILWAUKEE ELECTRIC TOOL CORPORATION
13135 W. LISBON RD., BROOKFIELD, WI 53005
Drwg. 2

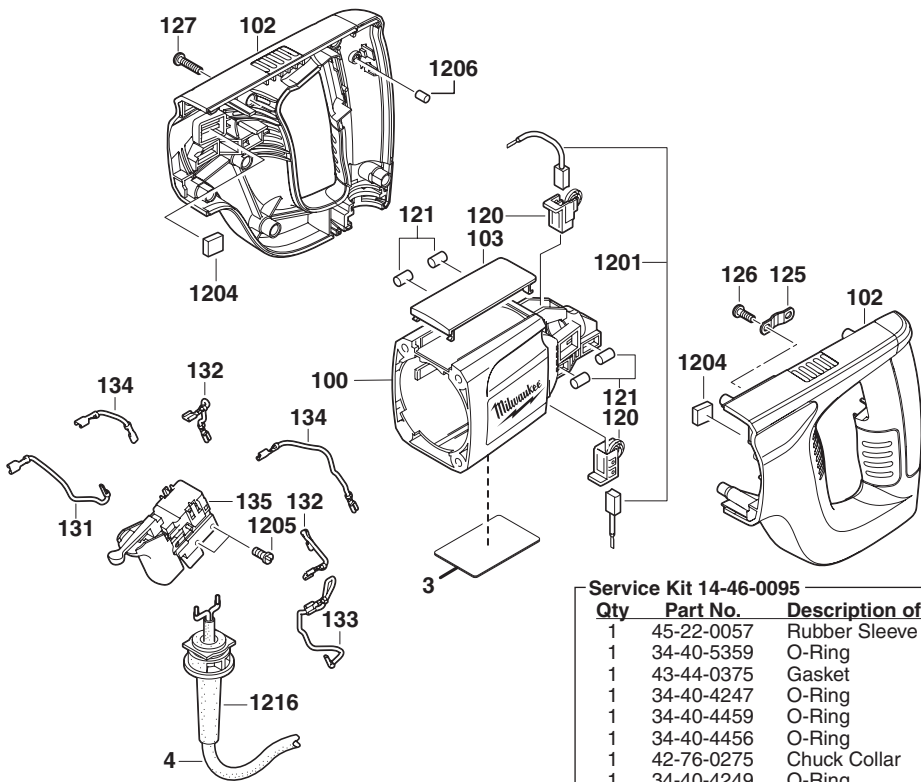


FIG.	PART NO.	DESCRIPTION OF PART	NO. REQ.
3	12-20-5369	Service Nameplate	(1)
4	22-64-5369	Cord Set	(1)
100	31-50-0165	Motor Housing	(1)
102	14-38-0120	Handle Assembly	(1)
103	31-15-0160	Cover	(1)
120	22-20-0230	Brush Holder w/ Spring	(2)
121	44-60-0915	Roller Pin	(4)
125	31-17-0240	Cord Clamp	(1)
126	05-78-0720	Screw	(2)
127	05-78-0715	Screw	(7)
131	23-94-1035	Wire	(1)
132	23-94-1036	Wire	(2)
133	23-94-6735	Wire	(1)
134	23-94-6725	Wire	(2)
135	23-66-0034	Switch	(1)
1201	22-16-0025	Carbon Brushes	(1)
1204	43-87-0085	Isolation Block	(2)
1205	05-81-0932	Screw	(2)
1206	45-30-0055	Slug	(1)
1216	44-76-0075	Cord Protector	(1)
	14-46-0095	Service Kit (Not Shown)	(1)

Service Kit 14-46-0095

Qty	Part No.	Description of Part	Qty	Part No.	Description of Part
1	45-22-0057	Rubber Sleeve	1	34-40-0132	O-Ring
1	34-40-5359	O-Ring	1	45-06-0215	Felt Washer
1	43-44-0375	Gasket	1	44-90-0375	Snap Ring - External
1	34-40-4247	O-Ring	1	42-52-0065	Dust Cap
1	34-40-4459	O-Ring	4	05-74-0717	Screw
1	34-40-4456	O-Ring	1	22-16-0025	Carbon Brush (2)
1	42-76-0275	Chuck Collar	2	43-87-0085	Isolation Block
1	34-40-4249	O-Ring	2	05-81-0932	Screw
1	34-40-0130	O-Ring	1	45-30-0055	Slug
1	44-76-0075	Cord Protector	1	44-90-4415	Retaining Ring
1	49-08-4250	"P" Grease	1	49-08-4255	"Q" Grease

Service Notes

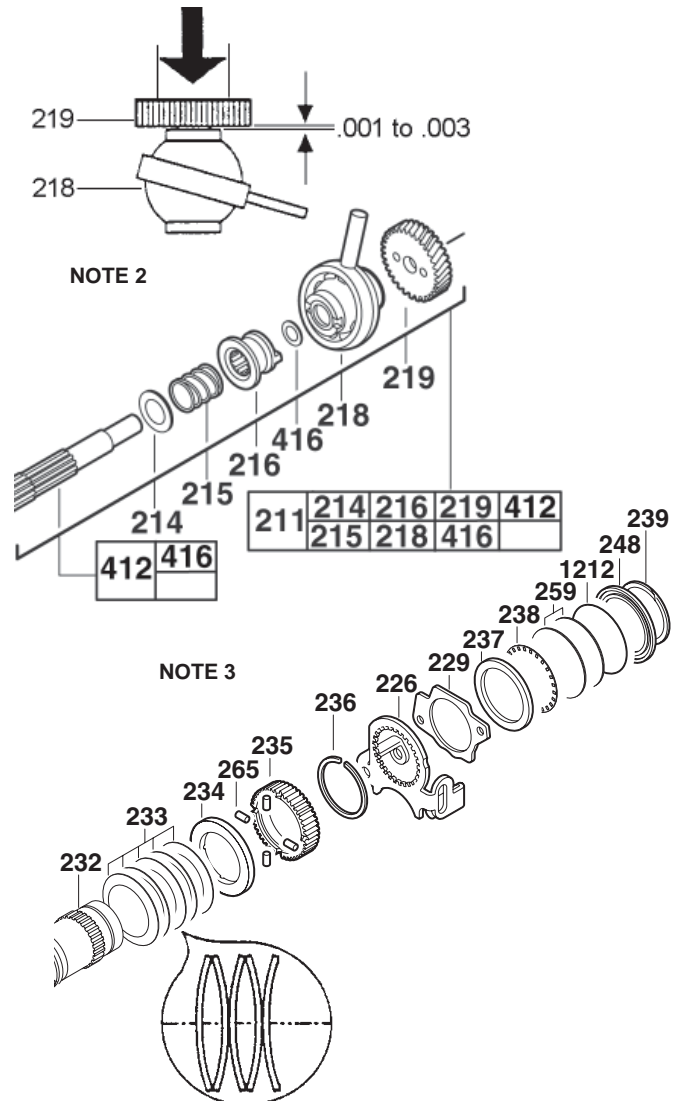
Disassembly

1. Remove gear case (200) from diaphragm / motor housing (206,100) by removing components, (1227, 253, 1226, 1214, 256, 258, 257, 255, 284, 276, 261, 262).
2. Remove spindle assembly (232) from diaphragm plate (206) by removing cap head screws (275).
3. When disassembling the spindle assembly (232) the ram (222) may remain attached to the ram catcher (241) inside the spindle. If this happens, place a small straight blade screwdriver or pin punch into the end of the spindle and gently tap the end of the striker (245)
4. To remove ram catcher assembly (241) from the inside of spindle (232) internal retaining ring (1218) must be removed. Use service fixture 61-10-0185 or a small punch to drive retainer (1218) from the internal spindle groove.
5. To remove spindle gear/clutch (235), press spindle gear against Belleville springs (233) and remove retaining ring (236). Use service fixture (61-30-0290) to compress spring washers.
6. To remove bearing housing assembly (415) from diaphragm plate (206) try turning /twisting it by hand (careful sharp edges). If it will not move, use a large flat blade screwdriver to gently pry it up from the face of the diaphragm plate (206).

Reassembly

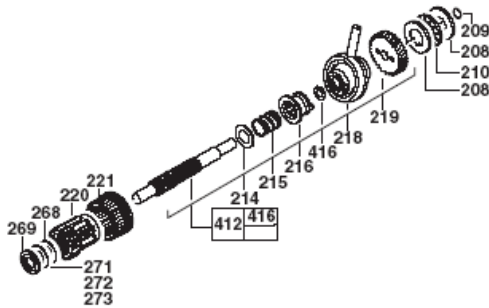
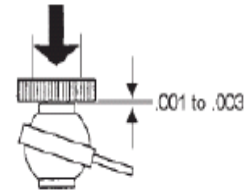
1. When reassembling bearing housing assembly (415) to diaphragm plate (206) do not press it completely into place before piston (223) and wobble shaft assembly (211) are in place.
2. When reassembling the wobble shaft assembly (211), a clearance of .001 to .003 inch must be maintained between the reduction gear (219) and the inner race of the wobble plate (218). (see note 2)
3. When reassembling the spindle / clutch components (234, 235, and 265), be sure to stack the disc springs (233) as shown. (see note 3)
4. Reinstall internal retaining ring (1218) into internal bore of spindle assembly (232) using an old piston.
5. Place bearing cup (1203) in rear bore of motor housing (100) prior to installing armature assembly (106).
6. Chamfer side of spacer (253) to face dust cap (1227)
7. Install striker (245) into ram catcher (241) so that the small diameter faces the front (bit end) of the spindle (232).

NOTE: Check the clutch torque. Clutch must slip at 19 to 20 ft.lbs. at the spindle, checked clockwise as viewed from the front of the tool.



Checking Intermediate Shaft 32-75-0071 Control Dimension

- 1) Press reduction gear [219] onto reduction gear shaft [412]; a clearance of 0.001" to 0.003" must be maintained between the reduction gear [219] and inner race of the wobble plate [218]

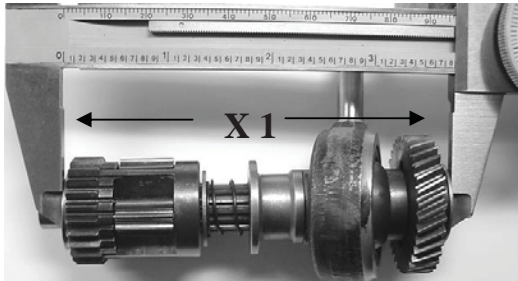


- 2) Lightly **grease entire length of reduction gear shaft [412]** and coupling sleeve [216] – lightly grease the thrust bearing assembly [208 and 210] and place them onto the shaft

- 3) Assemble internal gear [221], offset gear [220] and 45-88-1182 washer [268] and 45-88-1183 washer [269] onto wobble shaft assembly

- 4) Recess of washer 45-88-1183 [269] must face needle bearing / front of gear case

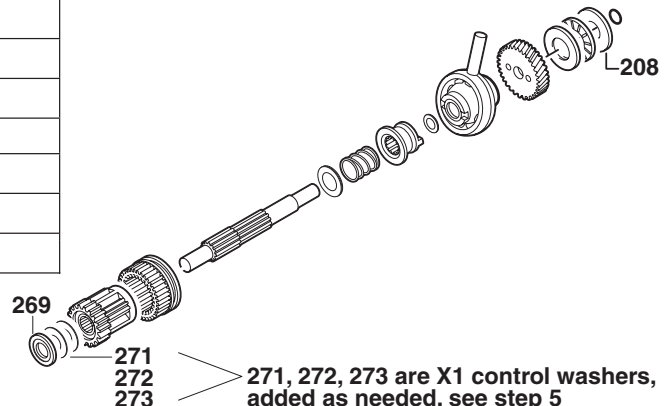
- 5) Check for control dimension **X1**, if it does not fall between 3.799" - 3.822" choose a suitable washer (s) according to chart and add it (them) to the reduction gear shaft assembly if required place control washer (s) [271] in front of 45-88-1182 washer [268], sandwiching it (them) between 45-88-1182 washer [268] and 45-88-1183 washer [269]



Control dimension **X1** – 3.799" - 3.822" measured between face of 45-88-1183 washer [269] and face of flat washer [208], see illustration.

Add washer(s) [271, 272, 273] to the assembly to obtain X1 control dimension. Most, if not all hammers will require control washers

Control dimension X1	Control washer(s) [271-272-273] add to assembly as listed]		
	0.040" 45-88-1182	0.016" 45-88-1185	0.008" 45-88-1184
3.728 3.736	1	1	1
3.736 3.744	1	1	-
3.744 3.751	1	-	1
3.751 3.759	1	-	-
3.760 3.767	1	-	-
3.768 3.775	-	2	-
3.775 3.783	-	-	-
3.783 3.791	-	1	-
3.791 3.799	-	-	1



271, 272, 273 are X1 control washers, added as needed, see step 5

Grease Instruction:

Type "P" Grease (Cat. No. 49-08-4250)

1. Place 1/2 oz. at needle bearing / splined retainer area of gearcase (200).
2. Grease wobble shaft assembly (412) with 1/2 oz. of grease prior to assembly.
3. Place 1/4 oz. in armature pinion cavity of bearing end plate assembly (206).
4. Coat felt washer (1225), cup springs (233), and spindle gear (235) prior to assembly.

NOTE: Total amount used; 1-1/2 oz. (one complete tube)

Type "Q" Grease (Cat. No. 49-08-4255)

1. Coat the spindle (232) inside and out.
2. Coat all parts assembled on or in spindle except for clutch.
3. Coat piston (223) (inside and out), ram (222), wrist pin (224) and wrist pin washers (225). DO NOT coat the flat face of the ram.

NOTE: Total amount used; 3/4 oz. (1/2 of a full tube)

