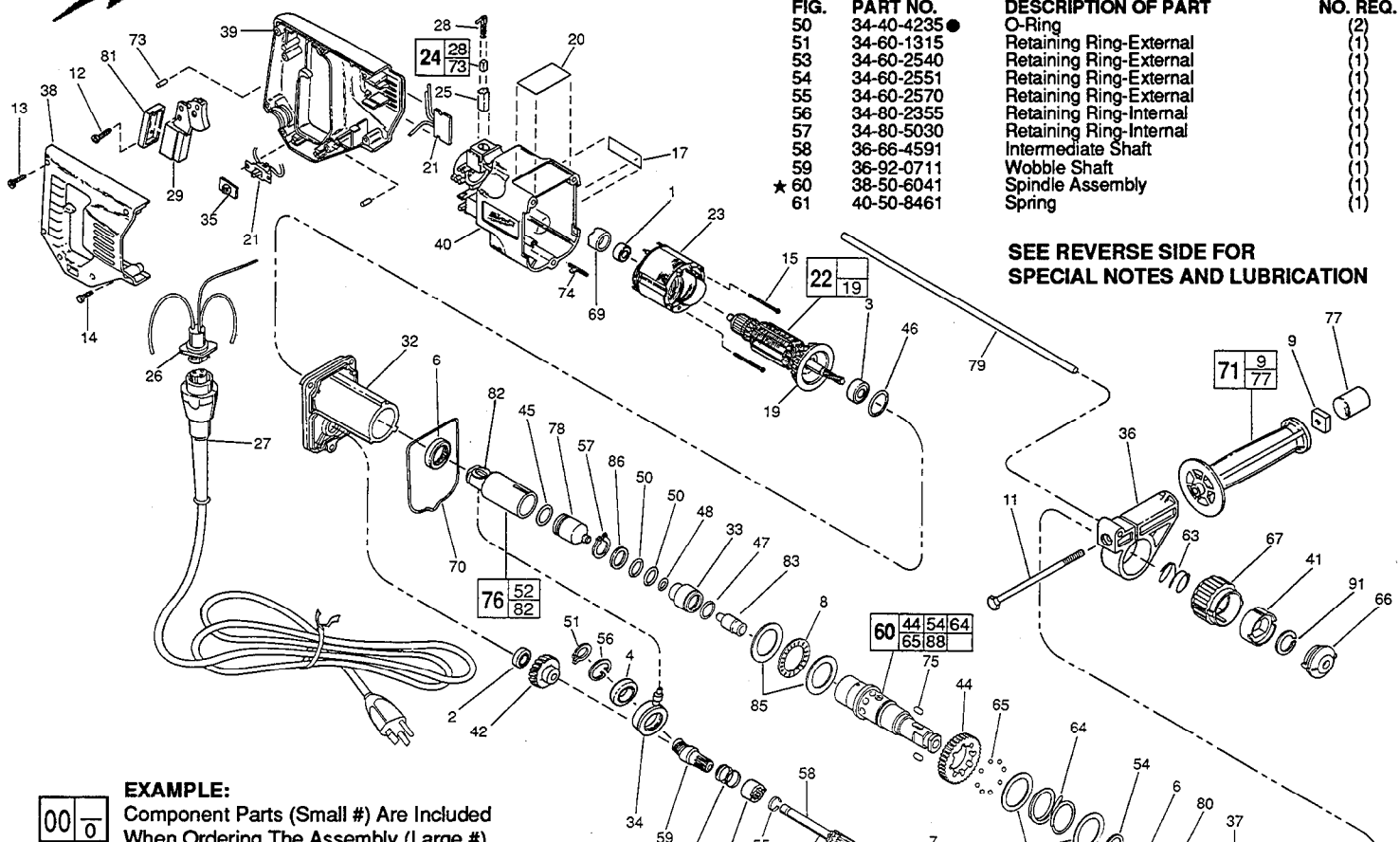




SERVICE PARTS LIST

BULLETIN NO.
54-24-1342

| | | | |
|--|--------------------|----------------------------------|----------|
| SPECIFY CATALOG NO. AND SERIAL NO. WHEN ORDERING PARTS | | REVISED BULLETIN | DATE |
| 3/4" ROTARY HAMMER | | 54-24-1341 | Jan. '96 |
| CATALOG NO. 5368-1 | SERIAL NUMBER 793C | WIRING INSTRUCTION 58-01-1310 | |



**SEE REVERSE SIDE FOR
SPECIAL NOTES AND LUBRICATION**

EXAMPLE:

| | |
|----|---|
| 00 | 0 |
|----|---|

 Component Parts (Small #) Are Included When Ordering The Assembly (Large #).

| FIG. | PART NO. | DESCRIPTION OF PART | NO. REQ. |
|------|--------------|---------------------------------------|----------|
| 1 | 02-04-0648 | Ball Bearing | (1) |
| 2 | 02-04-0820 | Ball Bearing | (1) |
| 3 | 02-04-0851 | Ball Bearing | (1) |
| 4 | 02-04-1510 | Ball Bearing | (1) |
| 5 | 02-50-1615 | Needle Bearing | (1) |
| 6 | 02-50-6455 | Needle Bearing | (1) |
| 7 | 02-80-0110 | Thrust Bearing | (1) |
| 8 | 02-80-0121 | Thrust Bearing | (1) |
| 9 | 06-54-0300 | 5/16-18 Square Nut | (1) |
| 10 | 06-65-3690 | 1/8 x 1/2 Groove Pin | (1) |
| 11 | 06-75-5835 | 5/16-18 x 4-1/2" Hex Hd. Bolt | (1) |
| 12 | 06-82-7270 | 8-16 x 5/8" Pan Hd. Slot. Plast. T-20 | (1) |
| 13 | 06-82-7284 | 8-16 x 3/4" Pan Hd. Slot. Plast. T-20 | (1) |
| 14 | 06-82-7326 | 8-16 x 1" Pan Hd. Slot. Plast. T-20 | (1) |
| 15 | 06-82-7393 | 7-18 x 2" Pan Hd. Slot. Plast. T-20 | (1) |
| 16 | 05-88-5988 | (K50 x 35mm) Pan Hd. Slot. T-20 | (1) |
| 17 | 10-20-1200 | Product Label - Falcon | (1) |
| 19 | 22-84-0650 | Fan Assembly | (1) |
| 20 | 12-20-0120 | Service Nameplate Kit | (1) |
| ★ 21 | 14-20-0445 | Switch Assembly | (1) |
| 22 | 16-10-0660 | 120 V Armature | (1) |
| 23 | 18-11-0140 | 120 V Field | (1) |
| 24 | 22-18-0800 ● | Brush Service Kit | (1) |
| 25 | 22-20-0810 | Brush Tube | (1) |
| 26 | 22-56-0640 | Pin Housing Assembly | (1) |
| 27 | 48-76-4008 | 8' Quick-Lok Cord | (1) |
| 28 | 23-52-1570 ● | Brush Spring Assembly | (1) |
| 29 | 23-66-1490 ● | Switch | (1) |
| 32 | 28-28-2032 | Diaphragm | (1) |
| 33 | 30-37-0050 | Striker Guide | (1) |
| 34 | 30-72-0100 | Wobble Plate | (1) |
| 35 | 31-12-0196 | Switch Cap | (1) |
| 36 | 31-17-0230 | Handle Ring | (1) |
| 37 | 31-40-0076 | Gear Case | (1) |
| 38 | 31-44-1730 | Right Handle Half | (1) |
| 39 | 31-44-1735 | Left Handle Half | (1) |
| 40 | 31-50-0990 | Motor Housing | (1) |
| 41 | 31-58-0521 | Chuck Sleeve | (1) |
| 42 | 32-40-2230 | Intermediate Gear | (1) |
| 43 | 14-29-0051 | Pinion Shaft Assembly | (1) |
| 44 | 32-10-4080 | Clutch Gear | (1) |
| 45 | 34-40-1215 ● | O-Ring | (1) |
| 46 | 34-40-2450 ● | O-Ring | (1) |
| 47 | 34-40-4220 ● | O-Ring | (1) |
| 48 | 34-40-4225 ● | O-Ring | (1) |

| FIG. | PART NO. | DESCRIPTION OF PART | NO. REQ. |
|------|--------------|--------------------------|----------|
| 50 | 34-40-4235 ● | O-Ring | (2) |
| 51 | 34-60-1315 | Retaining Ring-External | (1) |
| 53 | 34-60-2540 | Retaining Ring-External | (1) |
| 54 | 34-60-2551 | Retaining Ring-External | (1) |
| 55 | 34-60-2570 | Retaining Ring-External | (1) |
| 56 | 34-80-2355 | Retaining Ring-Internal | (1) |
| 57 | 34-80-5030 | Retaining Ring-Internal | (1) |
| 58 | 36-66-4591 | Intermediate Shaft | (1) |
| 59 | 36-92-0711 | Wobble Shaft | (1) |
| ★ 60 | 38-50-6041 | Spindle Assembly | (1) |
| 61 | 40-50-8461 | Spring | (1) |
| 62 | 40-50-8470 | Spring | (1) |
| 63 | 40-50-8481 | Spring | (1) |
| ★ 64 | 40-50-8491 | Spring | (1) |
| 65 | 02-02-1300 | Ball | (8) |
| 66 | 42-76-0671 ● | Dust Cap | (1) |
| 67 | 42-76-0291 | Chuck Collar | (1) |
| 68 | 42-90-0261 | Coupling | (1) |
| 69 | 42-96-0140 | Bearing Cup | (1) |
| 70 | 43-44-0930 ● | Gasket | (1) |
| 71 | 43-62-0841 | Side Handle Assembly | (1) |
| 72 | 14-49-0010 ● | Shift Knob Assembly | (1) |
| 73 | 14-46-1001 | Foam Slug Kit (10 Slugs) | (2) |
| 74 | 44-60-0530 | Ground Pin | (1) |
| 75 | 44-60-1150 ● | Roller Pin | (2) |
| 76 | 14-09-0130 | Piston Assembly | (1) |
| 77 | 44-68-0560 | Plug - Cap | (1) |
| 78 | 44-82-0140 | Ram | (1) |
| 79 | 44-94-0161 | Depth Rod | (1) |
| 80 | 45-06-0560 | Oil Seal | (1) |
| 81 | 45-12-0470 | Dust Shield | (1) |
| ★ 82 | 45-34-0121 | Socket | (1) |
| 83 | 45-56-2591 | Striker | (1) |
| 84 | 45-88-8280 | Thrust Washer | (2) |
| 85 | 45-88-8291 | Thrust Washer | (2) |
| 86 | 45-88-8300 | Washer | (1) |
| 87 | 45-88-8310 | Washer | (1) |
| 88 | 45-88-8321 | Washer | (2) |
| 89 | 45-88-8330 | Tab Washer | (1) |
| 91 | 34-60-3610 ● | Retaining Ring-External | (1) |
| | 14-46-5368 | Lubrication Service Kit | (1) |

MILWAUKEE ELECTRIC TOOL CORPORATION
13135 W. LISBON RD., BROOKFIELD, WI 53005

SERVICE FIXTURES:

- 61-30-0280 Pressing Tool
- 61-30-0290 Assembly Tool

LUBRICATION INSTRUCTIONS

Type "K" Grease, No. 49-08-4161

Apply a thin film of grease to the following parts as indicated:

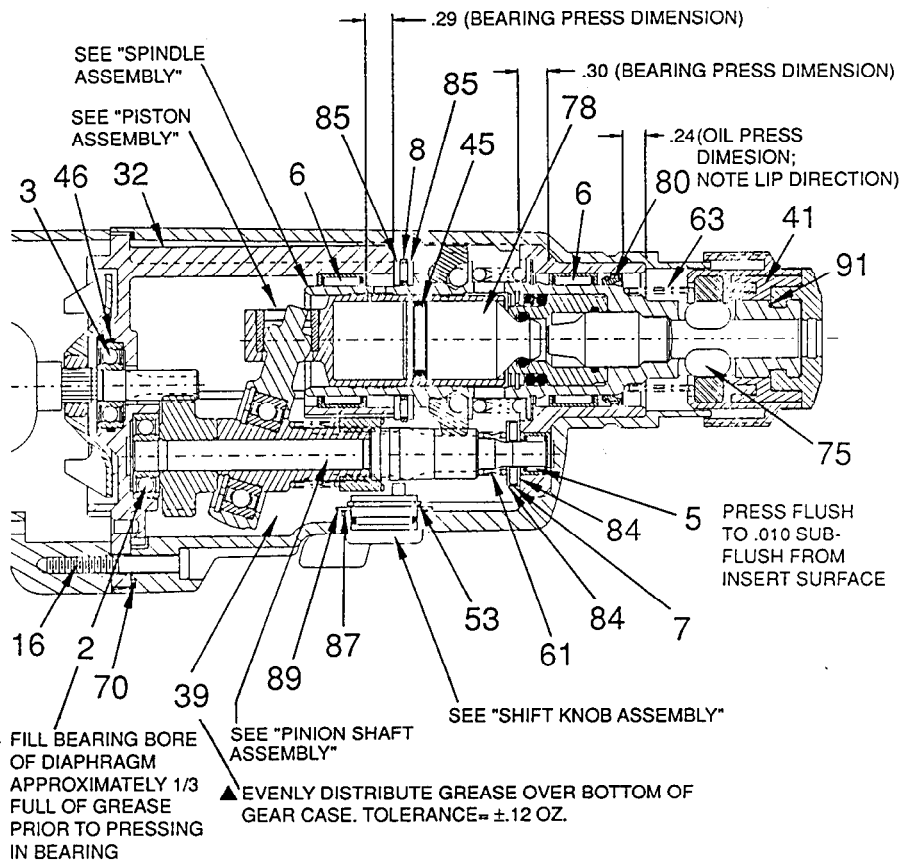
- FIG. INSTRUCTION**
- 60 Large I.D. of spindle, forward and rear bearing journals.
 - 33 Large I.D. of striker guide.
 - 83 Striker-all over.
 - 76,82 Inside and outside diameters of piston assembly, including I.D. of socket.
 - 78 All over ram, except rear face.
 - 32 Armature bearing bore of diaphragm.
 - 45,46,50 O-rings.

Apply a thin to moderately heavy coat of grease to the following parts indicated:

- FIG. INSTRUCTION**
- 75 Roller Pins (This also to aid in assembly).
 - 47,48 O-rings.
 - 42,43,44 All gear and pinion teeth.

CAUTION: THERE IS TO BE NO GREASE IN THE CHAMBER BETWEEN THE PISTON AND RAM BEYOND THE THIN COATINGS APPLIED TO THE TWO PARTS AS DESCRIBED ABOVE.

▲ SEE ASSEMBLY LUBRICATION NOTE



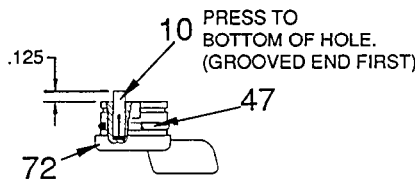
▲ FILL BEARING BORE OF DIAPHRAGM APPROXIMATELY 1/3 FULL OF GREASE PRIOR TO PRESSING IN BEARING

SEE "PINION SHAFT ASSEMBLY"

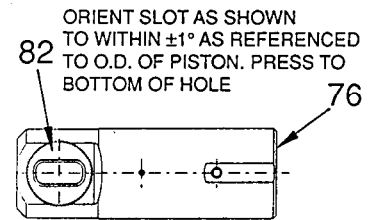
SEE "SHIFT KNOB ASSEMBLY"

▲ EVENLY DISTRIBUTE GREASE OVER BOTTOM OF GEAR CASE. TOLERANCE = ±.12 OZ.

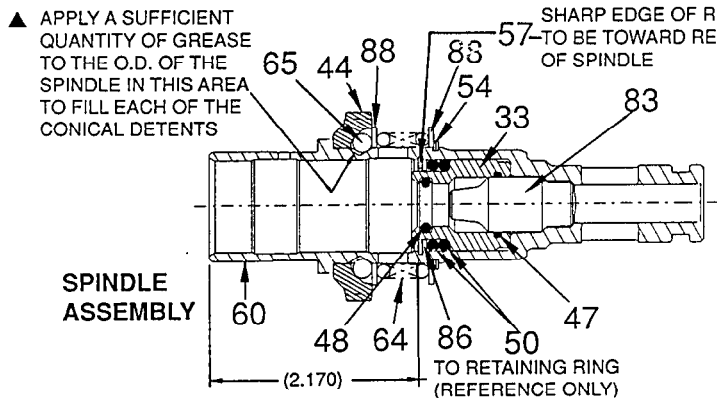
PRESS FLUSH TO .010 SUB-FLUSH FROM INSERT SURFACE



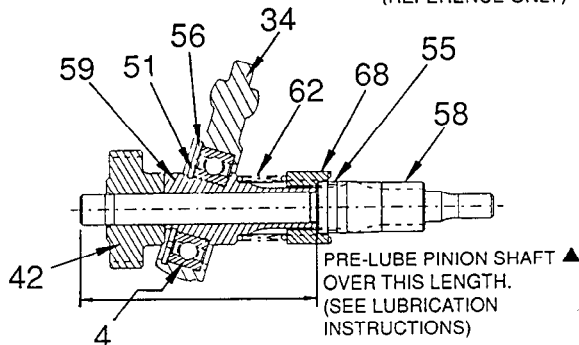
SHIFT KNOB ASSEMBLY



PISTON ASSEMBLY



SPINDLE ASSEMBLY



PINION SHAFT ASSEMBLY

NOTE: THE WOBBLE SHAFT #59 AND THE INTERMEDIATE GEAR #42 ARE TO BE PRESSED FLUSH TO EACH OTHER, SO THAT THE WOBBLE SHAFT IS STILL ABLE TO REVOLVE FREELY - WITH .005" MAXIMUM AXIAL PLAY ON THE INTERMEDIATE SHAFT #58

● 14-46-5368 LUBRICATION SERVICE KIT

THIS KIT INCLUDES:

- 1 34-40-1215 O-Ring
- 1 34-40-4220 O-Ring
- 1 34-40-4225 O-Ring
- 2 34-40-4235 O-Ring
- 1 34-40-2450 O-Ring
- 1 34-80-5030 Retaining Ring
- 1 34-60-3610 Retaining Ring
- 1 42-76-0670 Dust Cap
- 1 43-44-0930 Gasket
- 2 44-60-1150 Roller Pin
- 1 49-08-4161 5 Oz. "K" Grease

22-18-0800 BRUSH SERVICE KIT

THIS KIT INCLUDES:

- 2 - - Carbon Brush
- 2 23-52-1570 Brush Spring Assy.
- 2 44-52-0495 Foam Slug

Lubrication Note: MILWAUKEE recommends that scheduled maintenance of the Falcon Rotary Hammer include lubrication replacement, and replacement of vital O-rings and gaskets at each carbon brush change. Doing so will prolong the life of the hammer by reducing wear to gears and mechanism parts. The carbon brushes and armature commutator in the MILWAUKEE Falcon Rotary Hammer are designed and matched for many hours of reliable performance. The carbon brushes feature a unique pop-out feature which automatically shuts off the tool when the brushes are worn and need to be replaced.