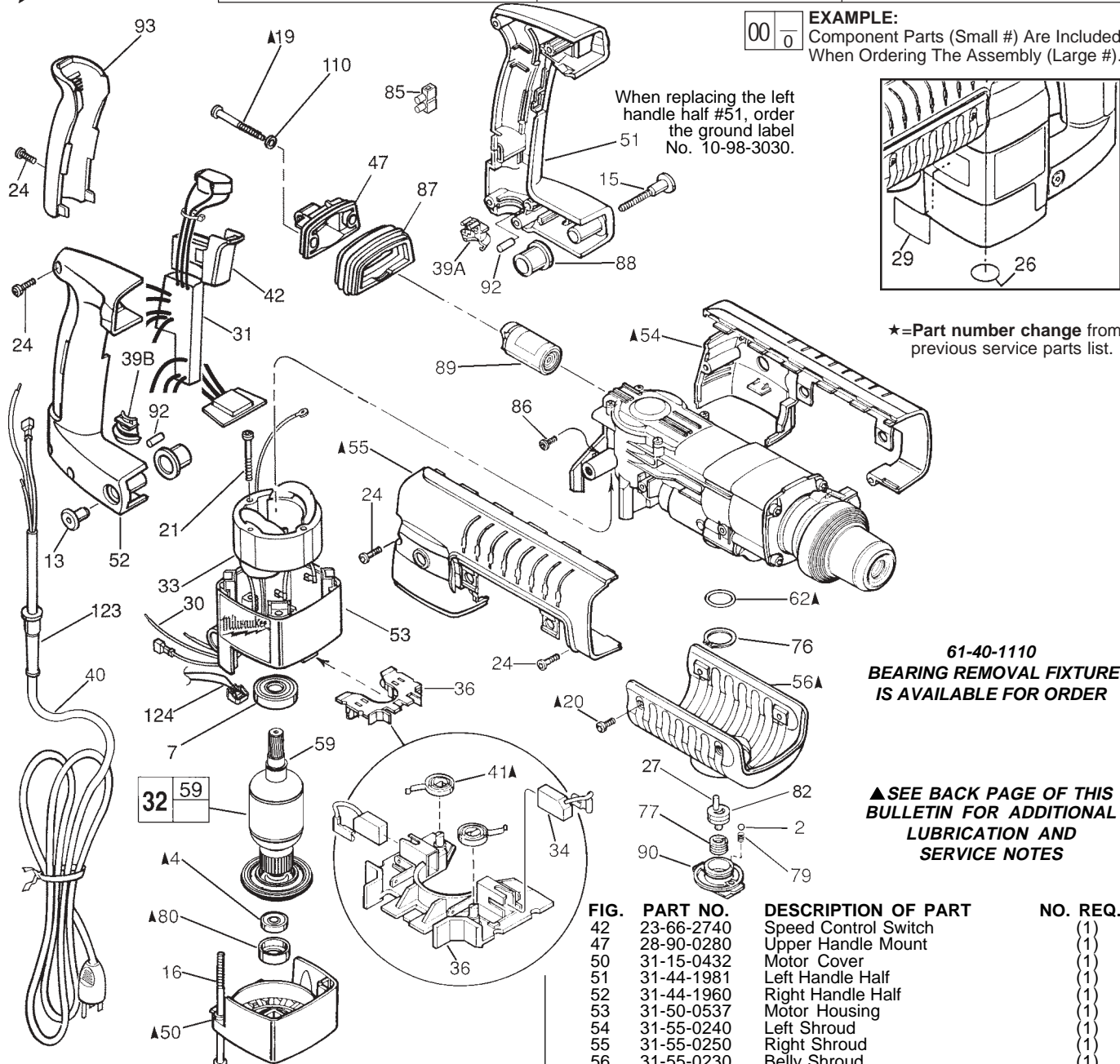




SERVICE PARTS LIST

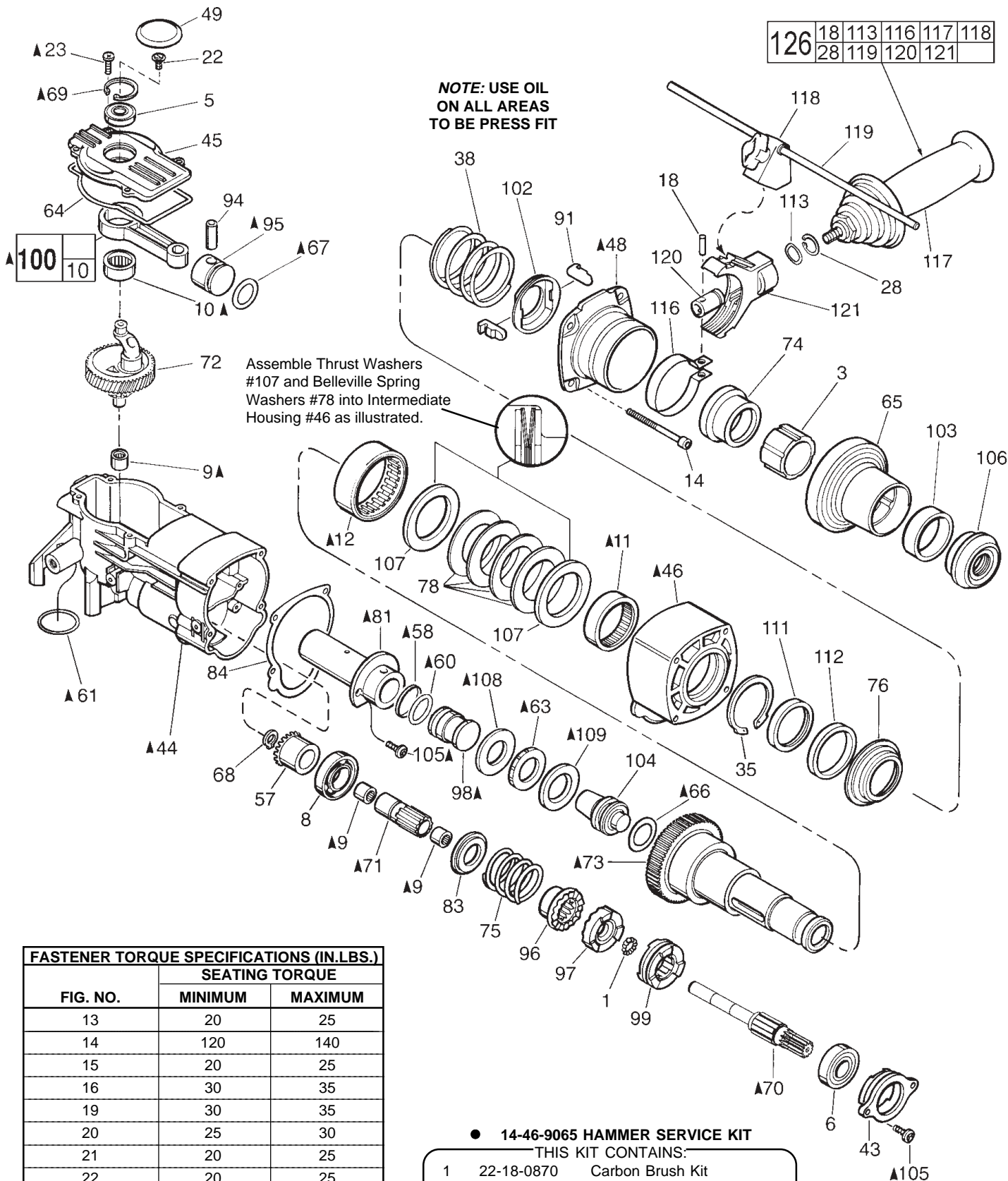
| | | | |
|--|---------------------------------|---|-----------|
| SPECIFY CATALOG NO. AND SERIAL NO. WHEN ORDERING PARTS | | REVISED BULLETIN | DATE |
| 1-3/4" (45mm) SDS MAX ROTARY HAMMER | | | Apr. 2005 |
| CATALOG NO. 5346-28 | STARTING SERIAL NO. A62A | WIRING INSTRUCTION 58-01-1208 | |



| FIG. | PART NO. | DESCRIPTION OF PART | NO. REQ. |
|------|----------|---------------------|---|
| | 2 | 02-02-1300 | 5 mm Steel Ball (2) |
| | 4 | 02-04-0847 | Ball Bearing (1) |
| | 7 | 02-04-1518 | Ball Bearing (1) |
| | 13 | 05-59-0100 | Pivot Nut (1) |
| | 15 | 05-77-0100 | Pivot Bolt (1) |
| | 16 | 05-81-0920 | M6 x 1.0 x 120 Pan Hd. Slit. Tapt. T-27 (4) |
| | 19 | 06-81-1805 | Special Screw (2) |
| | 20 | 06-82-7252 | 8-32 x 3/8" Pan Hd. Slit. Tapt. T-20 (2) |
| | 21 | 06-82-7425 | 8-16 x 2" Pan Hd. Slit. Plast. T-20 (4) |
| | 24 | 06-95-6290 | M5 x 2.24 x 18 Pan Hd. Slit. PT T-20 (7) |
| | 26 | 10-75-2760 | Milwaukee Label (1) |
| | 27 | 06-65-3720 | Dowel Pin-Knurled (1) |
| | 29 | 12-20-5348 | Service Nameplate Kit (1) |
| | 30 | 23-94-6101 | Ground Wire Assembly (1) |
| | 31 | 14-20-1001 | Electronics Assembly (1) |
| | 32 | 16-50-0045 | 120 Volt Armature (1) |
| | 33 | 18-50-0047 | 120 Volt Field (1) |
| | 34 | 22-18-0870 | 120 V Carbon Brush (2) Kit (2) |
| | 36 | 22-22-1480 | Brush Carrier Assembly (1) |
| | 39A | 31-17-0260 | Lower Cord Clamp (1) |
| | 39B | 31-17-0265 | Upper Cord Clamp (1) |
| | 40 | 22-64-5346 | Cord Set (1) |
| | 41 | 23-52-1550 | Brush Spring (2) |

| FIG. | PART NO. | DESCRIPTION OF PART | NO. REQ. |
|------|----------|---------------------|--|
| | 42 | 23-66-2740 | Speed Control Switch (1) |
| | 47 | 28-90-0280 | Upper Handle Mount (1) |
| | 50 | 31-15-0432 | Motor Cover (1) |
| | 51 | 31-44-1981 | Left Handle Half (1) |
| | 52 | 31-44-1960 | Right Handle Half (1) |
| | 53 | 31-50-0537 | Motor Housing (1) |
| | 54 | 31-55-0240 | Left Shroud (1) |
| | 55 | 31-55-0250 | Right Shroud (1) |
| | 56 | 31-55-0230 | Belly Shroud (1) |
| | 59 | 34-60-3620 | Retaining Ring (1) |
| | 62 | 34-40-4160 | O-Ring (1) |
| | 76 | 34-60-3630 | Retaining Ring (1) |
| | 77 | 40-50-8585 | Torsion Spring (1) |
| | 79 | 40-50-8690 | Compression Spring (2) |
| | 80 | 42-96-0130 | Bearing Cup (1) |
| | 82 | 43-06-0690 | Shift Disk (1) |
| | 85 | 22-56-0456 | Terminal Block (1) |
| | 86 | 05-88-8300 | M4 x .7 x 10mm Metric Ground Screw (1) |
| | 87 | 43-87-0030 | Isolation Bellows (1) |
| | 88 | 43-87-0040 | Pivot Isolator (2) |
| | 89 | 43-87-0060 | Isolation Module Assembly (1) |
| | 90 | 43-98-0470 | Rotostop Knob (1) |
| | 92 | 14-46-1001 | Foam Slug Kit (Bag of 10) (1) |
| | 93 | 44-52-0580 | Handle Cushion (1) |
| | 110 | 45-88-8555 | Rubber Washer (2) |
| | 123 | 44-76-0210 | Cord Protector (1) |
| | 124 | ----- | Inductor Boat (Incl. with Fig. 31) (1) |
| | | 23-78-0110 | Wire Tie (See 58-01-1206) (2) |
| | | 10-98-3030 | Ground Label (1) |

MILWAUKEE ELECTRIC TOOL CORPORATION
 13135 W. LISBON RD., BROOKFIELD, WI 53005



Assemble Thrust Washers #107 and Belleville Spring Washers #78 into Intermediate Housing #46 as illustrated.

NOTE: USE OIL ON ALL AREAS TO BE PRESS FIT

| | | | | | |
|-----|----|-----|-----|-----|-----|
| 126 | 18 | 113 | 116 | 117 | 118 |
| | 28 | 119 | 120 | 121 | |

| FASTENER TORQUE SPECIFICATIONS (IN.LBS.) | | |
|--|---------------------------|---------|
| FIG. NO. | SEATING TORQUE | |
| | MINIMUM | MAXIMUM |
| 13 | 20 | 25 |
| 14 | 120 | 140 |
| 15 | 20 | 25 |
| 16 | 30 | 35 |
| 19 | 30 | 35 |
| 20 | 25 | 30 |
| 21 | 20 | 25 |
| 22 | 20 | 25 |
| 23 | CRANKCASE COVER | 25 30 |
| 24 | HANDLE HALVES AND SHROUDS | 15 20 |
| | CUSHION GRIP | 6 10 |
| 25 | | 35 45 |
| 105 | | 60 70 |

22-18-0870 CARBON BRUSH SERVICE KIT
 THIS KIT CONTAINS:
 2 ----- Carbon Brush

- **14-46-9065 HAMMER SERVICE KIT**
 THIS KIT CONTAINS:
- 1 22-18-0870 Carbon Brush Kit
 - 1 31-12-0270 Cap-Cover
 - 1 34-40-4310 Rubber Damping Washer
 - 1 34-40-4320 Seal-Cover
 - 1 34-40-4350 O-Ring
 - 1 34-40-0045 Cap Seal
 - 1 34-40-0046 O-Ring
 - 1 34-40-4470 O-Ring
 - 1 42-96-0130 Bearing Cup
 - 1 43-44-0970 Gasket
 - 1 45-06-0680 Felt Seal
 - 1 49-08-5265 7 Oz. Tube "S2" Grease

▲ SEE BACK PAGE OF THIS BULLETIN FOR ADDITIONAL LUBRICATION AND SERVICE NOTES

| FIG. | PART NO. | DESCRIPTION OF PART | NO. REQ. |
|------|------------|--|----------|
| 1 | 02-02-0120 | 1/8" Steel Ball | (12) |
| 3 | 31-86-0100 | Spacer | (1) |
| 5 | 02-04-0911 | Ball Bearing | (1) |
| 6 | 02-04-1510 | Ball Bearing | (1) |
| 8 | 02-04-2000 | Ball Bearing | (1) |
| 9 | 02-50-2470 | Needle Bearing | (3) |
| 10 | 02-50-4020 | Needle Bearing | (1) |
| 11 | 02-50-9000 | Needle Bearing | (1) |
| 12 | 02-50-9985 | Needle Bearing | (1) |
| 14 | 05-81-0830 | M6 x 1.0 x 70 Pan Hd. Screw T-27 | (4) |
| 18 | 06-65-1660 | Dowel Pin | (1) |
| 22 | 06-82-8842 | 8-32 x 3/8" Pan Hd. Slit. Taptite T-20 | (1) |
| 23 | 06-95-6280 | M4 x 0.7 x 14 Pan Hd. Slit. Taptite T-20 | (4) |
| 28 | 34-60-2580 | External Retaining Ring | (1) |
| 35 | 34-80-5100 | Internal Retaining Ring | (1) |
| 38 | 40-50-8870 | Compression Spring | (1) |
| 43 | 30-89-0010 | Bearing Retainer | (1) |
| 44 | 28-14-2297 | Crankcase | (1) |
| 45 | 28-20-1325 | Crankcase Cover | (1) |
| 46 | 28-50-8680 | Intermediate Housing | (1) |
| 48 | 28-12-0110 | Nose Flange | (1) |
| 49 | 31-12-0270 | Cap-Cover | (1) |
| 57 | 32-05-2250 | Bevel Gear | (1) |
| 58 | 34-40-0045 | Cap Seal | (1) |
| 60 | 34-40-0046 | O-Ring | (1) |
| 61 | 34-40-1375 | O-Ring | (1) |
| 63 | 34-40-4310 | Rubber Damping Washer | (1) |
| 64 | 34-40-4320 | Seal-Cover | (1) |
| 65 | 42-76-0710 | Chuck Collar | (1) |
| 66 | 34-40-4350 | O-Ring | (1) |
| 67 | 34-40-4470 | O-Ring | (1) |
| 68 | 34-60-0700 | Retaining Ring | (1) |
| 69 | 34-80-5090 | Retaining Ring-Beveled | (1) |
| 70 | 36-14-0790 | Clutch Shaft | (1) |
| 71 | 36-14-0770 | Hollow Clutch Shaft | (1) |
| 72 | 14-09-0140 | Crankshaft Assembly | (1) |
| 73 | 38-50-6145 | Spindle | (1) |
| 74 | 42-76-0715 | Collar | (1) |
| 75 | 40-50-8575 | Compression Spring | (1) |
| 76 | 43-34-0765 | Spring Flange | (1) |
| 78 | 40-50-8590 | Belleville Spring | (4) |
| 81 | 42-98-0300 | Barrel | (1) |
| 83 | 43-34-0740 | Spring Flange | (1) |
| 84 | 43-44-0970 | Gasket | (1) |
| 91 | 43-96-0220 | Key | (2) |
| 94 | 44-60-1710 | Wrist Pin | (1) |
| 95 | 44-62-0220 | Piston | (1) |
| 96 | 44-66-6030 | Splined Clutch Plate | (1) |
| 97 | 44-66-6045 | Fixed Clutch Plate | (1) |
| 98 | 44-82-0225 | Ram | (1) |
| 99 | 44-90-4400 | Shift Ring | (1) |
| 100 | 44-94-0395 | Connecting Rod Assembly | (1) |
| 102 | 44-86-0610 | Key Retaining Ring | (1) |
| 103 | 44-90-0005 | Seal Retaining Ring | (1) |
| 104 | 45-56-2620 | Striker | (1) |
| 105 | 06-82-8872 | DG50 x 16mm Torx Pan Head Screw | (4) |
| 106 | 45-06-0555 | Dust Seal | (1) |
| 107 | 45-88-8520 | Thrust Washer | (2) |
| 108 | 45-88-8530 | Barrel Thrust Washer | (1) |
| 109 | 45-88-8535 | Striker Cushion Washer | (1) |
| 111 | 45-06-0670 | Oil Seal | (1) |
| 112 | 45-06-0680 | Felt Seal | (1) |
| 113 | 45-88-8730 | Wave Washer | (1) |
| 116 | 42-16-0125 | Side Handle Band | (1) |
| 117 | 14-34-0516 | Side Handle Assembly | (1) |
| 118 | 14-34-0551 | Depth Rod Mount Assembly | (1) |
| 119 | 44-94-0165 | Depth Gauge Rod | (1) |
| 120 | 44-86-0620 | Band Retainer | (1) |
| 121 | 31-44-2000 | Side Handle Housing | (1) |
| 126 | 14-34-0590 | Side Handle Assembly Kit | (1) |

NOTE: Check the clutch torque. Clutch must slip at 35 to 45 ft.lbs. at the spindle, checked clockwise as viewed from the front of the tool.

▲ SEE BACK PAGE OF THIS BULLETIN FOR ADDITIONAL LUBRICATION AND SERVICE NOTES

LUBRICATION NOTES: (TYPE "S2" GREASE, NO. 49-08-5265)

Fill Piston #95 with grease and assemble to Connecting Rod #100 with Wrist Pin #94. Front surface of Piston to be free of grease.

Lubricate O-Ring #67 with grease.

Place 1.5 oz. grease here.

Place a total of 1.0 oz. grease in the barrel cavity in the crankcase #44. Place .5 oz. in each corner in barrel chamber.

Place 1.5 oz. grease in bottom of crankcase prior to installing crankshaft assembly.

FRONT OF CRANKCASE

Apply grease to lobed surface #97.

Apply grease to spline surface #71.

Apply grease to lobed surface #96.

Apply grease to radius and spline surface #70.

Apply .5 oz. grease on clutch assembly, filling the spring coils.

Lubricate O-Ring with grease. Install O-Ring onto Ram. Assemble Cap Seal onto Ram. Resize Cap Seal and load into Barrel (seal end first). Ram should be located flush with end of Barrel.

Place .5 oz. grease in lower clutch pinion cavity.

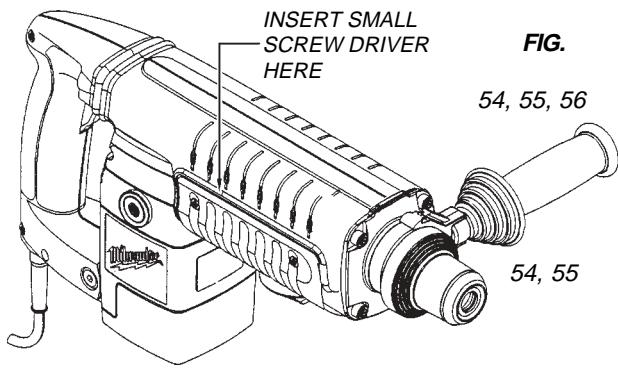


FIG. ▲ NOTES

54, 55, 56

TO REMOVE BELLY SHROUD #56 FROM TOOL, INSERT SMALL SCREW DRIVER INTO GROOVE BETWEEN BELLY AND SIDE SHROUDS #54 AND #55, ABOUT 1/3 OF THE WAY FROM THE MOTOR END, AS SHOWN. PRY OUT AND DOWN ON BOTH SIDES OF THE TOOL.

54, 55

TO INSTALL THE SIDE SHROUDS #54 AND #55, THE TOP HINGE OF THE SHROUDS MUST BE COMPLETELY INTERLOCKED, THEN THE BACK SIDE ROTATED CLOSED AROUND THE TOOL.

73

LUBRICATE ALL BORES IN SPINDLE #73 WITH A MEDIUM COATING OF GREASE.

63, 108, 109

LUBRICATE RUBBER DAMPING WASHER #63, BARREL THRUST WASHER #108 AND STRIKER CUSHION WASHER #109 WITH A MEDIUM COATING OF GREASE BEFORE ASSEMBLY.

10, 100

PRESS NEEDLE BEARING #10 IN ROD #100 SO THAT THE SAME AMOUNT STICKS OUT ON BOTH SIDES OF THE ROD, AS SHOWN.

9, 71

PRESS (2) NEEDLE BEARINGS #9 INTO HOLLOW CLUTCH SHAFT #71, FLUSH WITH THE ENDS OF THE SHAFT.

11, 12, 46

PRESS NEEDLE BEARING #11 FLUSH TO THE INSIDE SURFACE OF THE INTERMEDIATE HOUSING #46, AGAINST THE SNAP RING. PRESS NEEDLE BEARING #12 FLUSH TO THE OUTSIDE MACHINED SURFACE OF THE INTERMEDIATE HOUSING.

9, 44

PRESS NEEDLE BEARING #9 INTO CRANKCASE #44, FLUSH WITH TOP OF BORE, AS SHOWN.

81

LIGHTLY GREASE INSIDE OF BARREL #81 BEFORE ASSEMBLY.

14, 19, 20, 23

FASTENERS #14, #19, #20 AND #23 ARE TO BE RE-ASSEMBLED USING BLUE LOCTITE.

60, 61, 62, 66, 67

LUBRICATE O-RINGS #60, #61, #62, #66 AND #67 WITH GREASE.

69

INSTALL BEVEL SNAP RING #69 WITH BEVEL SIDE UP.

4, 50, 80

PLACE BEARING CUP #80 ON SMALL ARMATURE BEARING #4 BEFORE INSTALLING MOTOR COVER #50.

41

BRUSH SPRINGS #41 ARE TO BE WOUND 1/2 TURN TO ENGAGE BRUSHES.

4

RUBBER SEAL SIDE OF BALL BEARING #4 TO FACE FAN.

95, 98

FACES OF PISTON #95 AND RAM #98 ARE TO BE FREE OF GREASE.

105

WHEN REASSEMBLING BARREL AND CLUTCH SCREWS INTO EXISTING CRANKCASE, MAKE SURE SCREW IS STARTED IN EXISTING THREAD. DO NOT CREATE TWO SETS OF THREADS IN ONE HOLE.

