



SERVICE PARTS LIST

BULLETIN NO.
54-24-0213

SPECIFY CATALOG NO. AND SERIAL NO WHEN ORDERING PARTS		REVISED BULLETIN	DATE
1-1/4" ROTARY HAMMER		54-24-0212	Aug. '86
		WIRING INSTRUCTION	
CATALOG NO. 5343	STARTING SERIAL NO. 687-35000	58-01-0734	

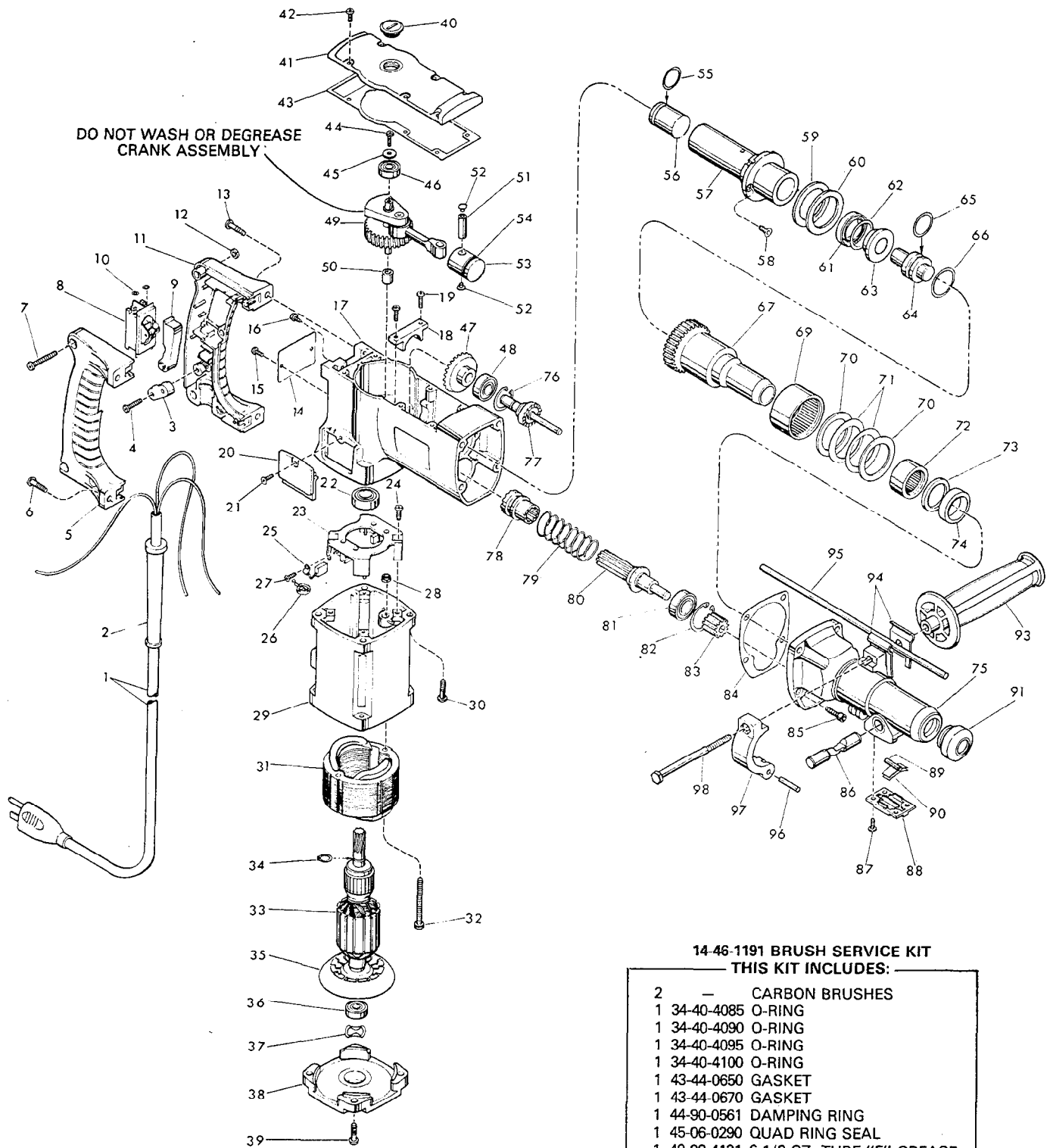
FIG.	PART NO.	DESCRIPTION OF PART	NO. REQ.
1	22-64-0121	Cord Set	(1)
2	44-76-0050	Cord Protector	(1)
3	31-17-0180	Cord Clamp	(1)
4	05-78-0571	M4.55 x 1.59 X 19 Pan Hd. Screw	(2)
5	31-44-1210	Right Handle Half	(1)
6	05-78-0570	M4.55 x 1.59 x 16 Pan Hd. Screw	(2)
7	05-81-0650	M5 x .8 x 25 Pan Hd. Screw	(3)
8	23-66-1230	Switch	(1)
9	31-92-0230	Trigger	(1)
10	06-97-1800	No. 6 Int. Tooth Lockwasher	(4)
11	31-44-1200	Left Handle Half	(1)
12	05-55-0610	M5 x .8 Hex Nut	(3)
13	05-78-0665	M5 x .8 x 20 Pan Hd. Screw	(2)
14	12-99-0013	Nameplate Blank	(1)
15	06-85-0200	Nameplate Screw	(2)
16	05-78-0415	M4 x .7 x 10 Sems Ground Screw	(1)
★	28-14-1552	Crankcase Assy. (Includes Fig. Nos. 18 & 19)	(1)
18	—	Bearing Cap	(1)
19	05-78-0460	M4 x .7 x 16 Pan Hd. Screw (See Note)	(2)
20	31-15-0250	Brush Cover	(2)
21	05-78-0440	M4 x .7 x 10 Pan Hd. Screw	(2)
22	02-04-1203	Ball Bearing	(1)
23	22-22-0650	Brush Carrier Assembly	(1)
24	05-78-0340	M3.63 x 1.34 x 10 Pan Hd. Screw	(2)
★	25	Carbon Brush (Refer to Brush Service Kit)	(2)
26	23-52-1550	Brush Spring	(2)
27	05-78-0405	M4 x .7 x 10 Pan Hd. Screw	(2)
28	06-57-3005	10-32 Locking Hex Nut	(2)
29	31-50-0400	Motor Housing	(1)
30	05-74-0515	M5 x .8 x 20 Socket Hd. Sems	(4)
31	18-50-0150	120 Volt Field	(1)
32	06-81-7470	10-32 x 1-7/8 Pan Hd. Sems	(2)
33	16-50-0150	120 Volt Armature (Includes Fig. Nos. 34 & 35)	(1)
34	34-60-0950	Retaining Ring	(1)
35	22-84-0710	Fan	(1)
36	02-04-0850	Ball Bearing	(1)
37	45-88-0577	Wave Washer	(1)
38	31-15-0270	Motor Housing Cover	(1)
39	05-78-0570	M4.55 x 1.59 x 16 Pan Hd. Screw	(4)
40	31-75-0020	Cover Screw	(1)
41	28-20-1250	Crank Case Cover	(1)
42	05-78-0460	M4 x .7 X 10 Pan Hd. Screw	(6)
43	43-44-0650	Gasket	(1)
44	05-78-0440	M4 x .7 x 10 Pan Hd. Screw	(1)
45	45-88-0920	Flat Washer - Spring Steel	(1)
46	02-04-0850	Ball Bearing	(1)
47	32-05-1250	Bevel Gear	(1)
48	02-04-1022	Ball Bearing	(1)
49	14-09-0105	Crank Assembly (See Note)	(1)
50	02-50-1645	Needle Bearing (See Note)	(1)
51	44-60-0790	Piston Pin Assembly (Includes Fig. No. 52)	(1)
52	42-42-0240	Button	(2)
53	44-62-0150	Piston	(1)
54	45-06-0290	Quad Ring Seal (See Note)	(1)
★	55	O-Ring	(1)
★	56	Ram	(1)
★	57	Barrel	(1)
58	05-78-0435	M4 x .7 x 13 Flat Hd. Taptite Screw (See Note)	(2)
★	59	Damping Ring - Urethane	(1)
★	60	Thrust Washer - Steel	(1)
★	61	Cushion Washer	(1)
★	62	O-Ring	(1)
★	63	Cushion Washer	(1)
★	64	Striker	(1)
★	65	O-Ring	(1)
★	66	O-Ring	(1)
★	67	Spindle	(1)
68	28-12-0315	Nose Assembly (Includes Fig. Nos. 69 thru 75)	(1)

FIG.	PART NO.	DESCRIPTION OF PART	NO. REQ.
69	02-50-9976	Needle Bearing	(1)
70	45-88-0900	Thrust Washer	(2)
71	40-50-7850	Belleville Spring	(2)
72	02-50-6455	Needle Bearing	(1)
73	45-06-0250	Seal	(1)
74	45-88-5175	Felt Washer	(1)
75	28-12-0311	Nose	(1)
76	34-80-2006	Internal Retaining Ring	(1)
77	36-14-0700	Clutch Shaft	(1)
78	36-14-0711	Splined Clutch	(1)
79	40-50-3250	Clutch Spring	(1)
★	80	14-08-0125 Splined Clutch Assy. (See Note)	(1)
★	81	02-04-1510 Ball Bearing	(1)
82	34-80-2355	Internal Retaining Ring	(1)
83	32-60-2150	Pinion (See Note)	(1)
84	43-44-0670	Gasket	(1)
85	05-74-0615	M6 x 1.0 x 20 Socket Hd. Cap Screw (See Note)	(4)
★	86	44-20-0221 Bit Lock	(1)
87	05-78-0440	M4 x .7 X 10 Pan Hd. Screw (See Note)	(4)
88	28-20-1295	Bit Lock Cover	(1)
89	06-65-1315	Dowel Pin	(1)
90	40-50-3275	Bit Retainer Spring	(2)
91	42-76-0380	Dust Collar	(1)
★	92	43-62-0961 Side Handle Assy. (Incl. Fig. No. 93 Thru 98)	(1)
93	43-62-0865	Side Handle Assy.	(1)
94	42-68-0390	Depth Gage Clamp	(2)
95	44-94-0165	Depth Gage Rod	(1)
96	06-65-0631	Groove Pin	(1)
97	28-82-0160	Handle Ring Half	(2)
98	06-75-0353	5/16 - 18 x 3.5 Hex Hd. Bolt	(1)
	10-98-5986	Warning Label (Not Shown)	
	10-98-6330	Product Label H.D. 1-1/4 (Not Shown)	
	10-98-6340	Product Label U.S. 1 (Not Shown)	

NOTES

- FIG.**
- 19 Apply Type 242 Blue Loctite
 - 50 Press Flush to Casting Surface Inside Crankcase Area
 - 58 Apply Type 242 Blue Loctite
 - 85 Apply Type 242 Blue Loctite and Torque to 130-140 In Lb.
 - 87 Apply Type 242 Blue Loctite

LUBRICATION - 6-1/2 Oz. of Type "F" Grease
 Use 1 Oz. At Fig. 83
 Use 3-1/2 Oz. At Fig. 49
 Use 2 Oz. At Fig. 80
 Grease All Rubber Parts When Assembling



Note: TOOL TO BE RUN AT NO-LOAD FOR 10 MINUTES WHENEVER NEW BRUSHES ARE INSTALLED.