



SERVICE PARTS LIST

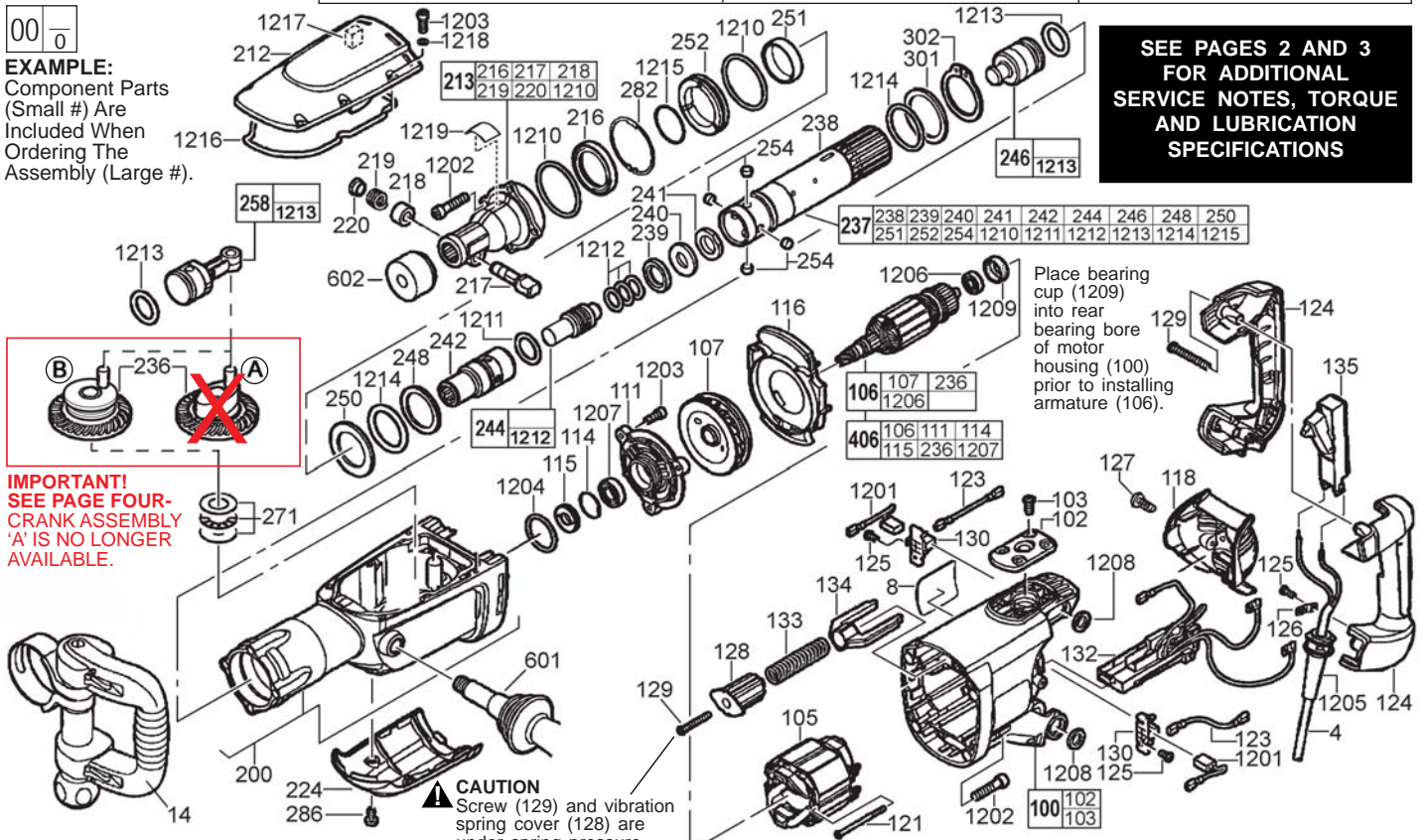
BULLETIN NO.
54-24-6000

| | | | |
|--|----------------|---|-------------|
| SPECIFY CATALOG NO. AND SERIAL NO. WHEN ORDERING PARTS | | REVISED BULLETIN | DATE |
| 3/4" HEX DEMOLITION HAMMER | | | Mar. 2013 |
| CATALOG NO. | 5337-20 | SERIAL NUMBER | A47A |
| | | WIRING INSTRUCTION 58-01-0195 | |

00
0

EXAMPLE:
Component Parts (Small #) Are Included When Ordering The Assembly (Large #).

SEE PAGES 2 AND 3 FOR ADDITIONAL SERVICE NOTES, TORQUE AND LUBRICATION SPECIFICATIONS



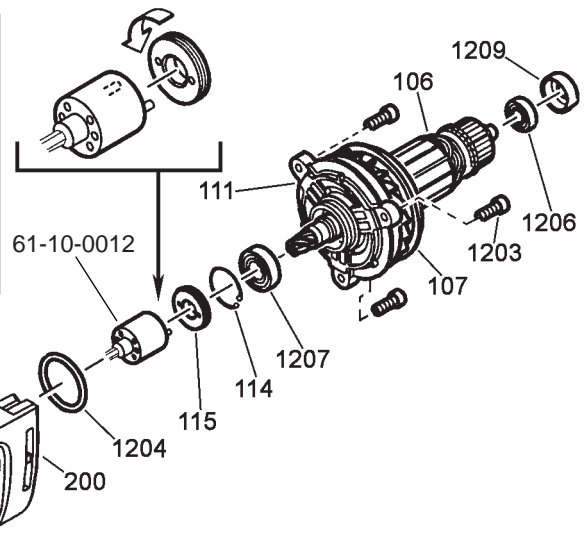
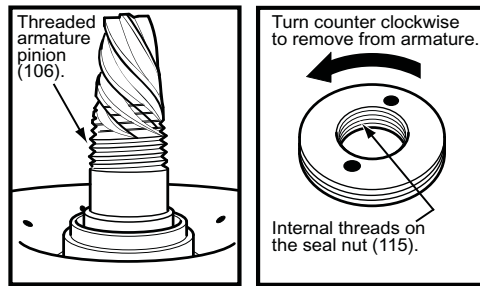
| FIG. | PART NO. | DESCRIPTION OF PART | NO. REQ. |
|------|------------|--------------------------------------|----------|
| 4 | 22-64-0022 | CORD SET | 1 |
| 8 | 12-20-5337 | SERVICE NAMEPLATE KIT | 1 |
| 14 | 43-62-0042 | SPADE SIDE HANDLE | 1 |
| 100 | 31-50-0033 | MOTOR HOUSING | 1 |
| 102 | 42-92-0106 | SIDE HANDLE PLATE | 1 |
| 103 | 05-78-0070 | SCREW - SIDE HANDLE PLATE | 4 |
| 105 | 18-11-0050 | FIELD | 1 |
| 106 | 16-10-0137 | ARMATURE WITH CRANK ASSEMBLY | 1 |
| 107 | 22-84-0442 | FAN | 1 |
| 111 | 28-28-0118 | BEARING END PLATE | 1 |
| 114 | 44-90-0019 | RETAINING RING | 1 |
| 115 | 44-40-0042 | SEAL NUT | 1 |
| 116 | 42-14-0105 | AIR DEFLECTION RING | 1 |
| 118 | 31-15-0051 | SERVICING LID | 1 |
| 121 | 05-78-0071 | SCREW - FIELD | 2 |
| 123 | 23-94-0031 | WIRE - RED | 2 |
| 124 | 31-15-0052 | D-HANDLE SET | 1 |
| 125 | 05-78-0072 | SCREW | 4 |
| 126 | 31-17-0110 | STRAIN RELIEF CLAMP | 1 |
| 127 | 05-78-0073 | SCREW - SERVICING LID | 2 |
| 128 | 31-15-0053 | COVER - VIBRATION SPRING | 1 |
| 129 | 05-78-0074 | SCREW | 5 |
| 130 | 22-20-0027 | BRUSH HOLDER | 2 |
| 132 | 22-75-0080 | DIAL SWITCH | 1 |
| 133 | 40-50-0041 | SPRING - VIBRATION | 1 |
| 134 | 31-10-0130 | VIBRATION LEVER | 1 |
| 135 | 23-66-0031 | SWITCH - LOCK ON | 1 |
| 200 | 31-40-0032 | GEAR BOX WITH SPINDLE SLEEVE BEARING | 1 |
| 212 | 31-15-0061 | COVER - UPPER GEAR BOX | 1 |
| 213 | 30-60-0030 | NOSE PIECE ASSEMBLY | 1 |
| 216 | 43-44-0062 | SEAL RING | 1 |
| 217 | 44-10-0040 | LATCH BAR- NOSE PIECE | 1 |
| 218 | 43-56-0072 | SLEEVE - NOSE PIECE | 1 |
| 219 | 40-50-0042 | SPRING - NOSE PIECE | 1 |
| 220 | 43-56-0073 | LATCH - NOSE PIECE | 1 |
| 224 | 31-15-0062 | COVER - LOWER GEAR BOX | 1 |
| 236 | ----- | CRANK ASSEMBLY | 1 |
| 237 | 38-50-0046 | SPINDLE ASSEMBLY | 1 |
| 238 | 38-50-0044 | SPINDLE SLEEVE | 1 |
| 239 | 45-88-0052 | THRUST COLLAR | 1 |
| 240 | 34-40-0061 | BACK PRESSURE O-RING | 1 |
| 241 | 45-88-0185 | WASHER | 1 |

| FIG. | PART NO. | DESCRIPTION OF PART | NO. REQ. |
|------|-------------|---|----------|
| 242 | 44-82-0073 | STRIKER GUIDE | 1 |
| 244 | 45-56-2526 | STRIKER | 1 |
| 246 | 44-82-0074 | RAM | 1 |
| 248 | 45-88-0053 | ATTACHMENT WASHER (.118 THICK) | 1 |
| 250 | 45-88-0054 | WASHER (.154 THICK) | 1 |
| 251 | 44-96-0132 | ROLLER RACE | 1 |
| 252 | 44-90-0018 | THRUST COLLAR | 1 |
| 254 | 44-96-0133 | ROLLER | 4 |
| 258 | 44-62-0053 | PISTON | 1 |
| 271 | 02-80-0117 | THRUST BEARING WITH WASHERS | 1 |
| 282 | 44-90-0016 | RETAINING RING | 1 |
| 286 | 05-81-0703 | SCREW - LOWER GEAR BOX COVER | 2 |
| 301 | 45-88-0057 | WASHER | 1 |
| 302 | 44-90-0021 | RETAINING RING | 1 |
| 406 | 16-10-0138 | ARMATURE ASSEMBLY WITH BEARING END PLATE AND CRANK ASSEMBLY | 1 |
| 601 | 43-62-0043 | AUXILIARY SIDE HANDLE | 1 |
| 602 | 42-52-0057 | DUST GUARD CAP | 1 |
| 1201 | 22-16-0026◆ | CARBON BRUSH SET (PKG. 2) | 2 |
| 1202 | 05-81-0701◆ | SCREW M8 x 40 | 8 |
| 1203 | 05-81-0702◆ | SCREW M5 x 16 | 9 |
| 1204 | 34-40-0062◆ | O-RING - GEAR BOX | 1 |
| 1205 | 44-76-0051◆ | CORD PROTECTOR | 1 |
| 1206 | 02-04-0061◆ | BALL BEARING | 1 |
| 1207 | 02-04-0062◆ | BALL BEARING | 1 |
| 1208 | 34-40-0063◆ | O-RING - MOTOR HOUSING | 4 |
| 1209 | 22-72-0200◆ | BEARING CUP | 1 |
| 1210 | 34-40-0064◆ | O-RING | 2 |
| 1211 | 34-40-0071◆ | O-RING - STRIKER GUIDE | 1 |
| 1212 | 34-40-0072◆ | O-RING - STRIKER | 3 |
| 1213 | 34-40-0073◆ | O-RING | 2 |
| 1214 | 34-40-0074◆ | O-RING - SPINDLE SLEEVE | 2 |
| 1215 | 44-90-0017◆ | RETAINING RING | 1 |
| 1216 | 43-44-0063◆ | GASKET - GEAR BOX COVER | 1 |
| 1217 | 43-84-0443◆ | FELT | 1 |
| 1218 | 45-88-0056◆ | WASHER - GEAR BOX COVER | 6 |
| 1219 | 10-15-0074 | WARNING LABEL - CHISEL | 1 |
| | 48-55-5337 | CARRYING CASE (NOT SHOWN) | 1 |

◆=Component of the 14-46-0041 MAINTENANCE SET (NOT SHOWN)

MILWAUKEE ELECTRIC TOOL CORPORATION
13135 W. LISBON RD., BROOKFIELD, WI 53005
Drwg. 6

Service fixture No. **61-10-0012** is required to remove seal nut (115) from armature shaft (106)/ bearing end plate (111). Secure armature, insert pins of service fixture into holes located in seal nut and turn counter clockwise to remove. When reassembling seal nut to bearing plate, tighten to 141 in.-lbs. (16Nm).



Use forcing disc service fixture No. **61-10-0011** when removing the armature fan (107) from the armature (106).

End of armature shaft

6.29" / 6.22" (159mm)

Face of fan

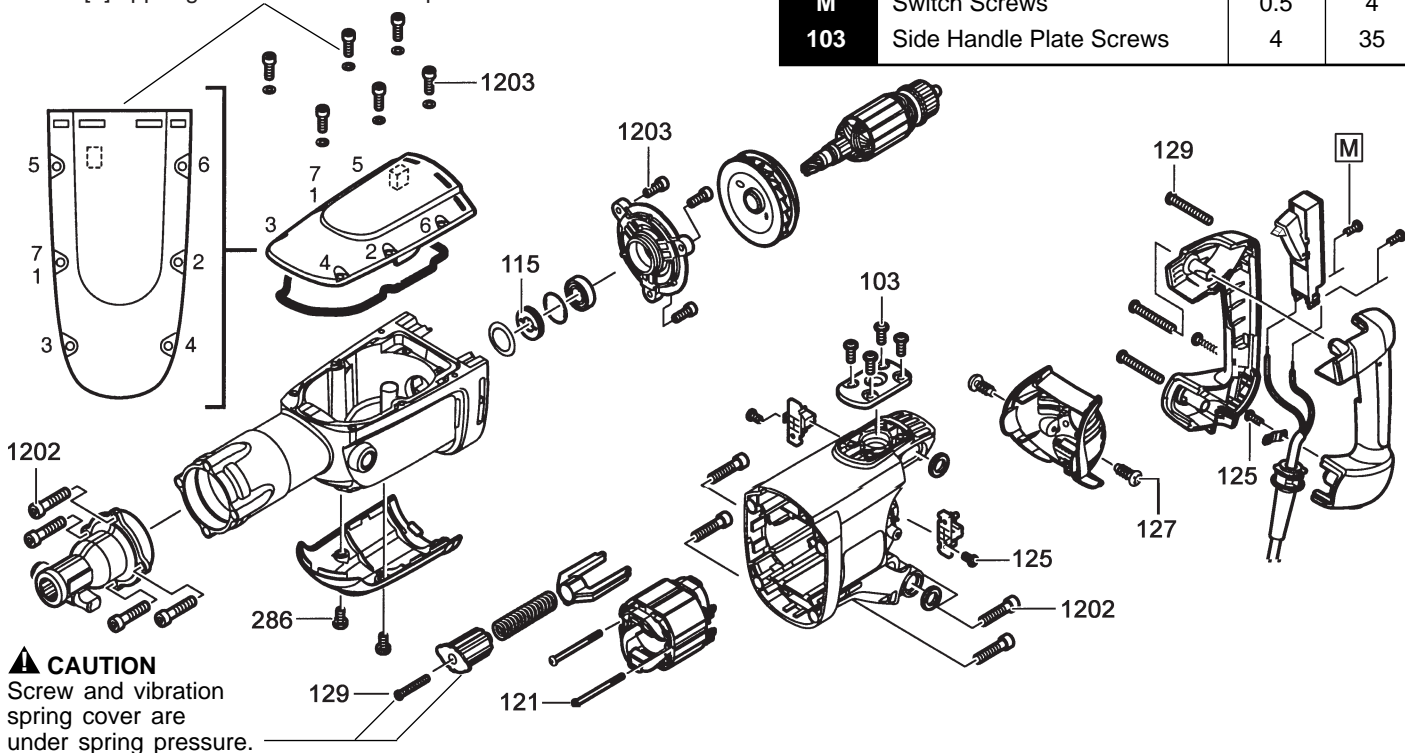
Place Loctite® 401 here.

Press armature fan onto armature shaft to specifications shown. Apply Loctite® 401 Porous Material Bonding Adhesive around the entire base of fan (360°).

| SEQUENCE AND TORQUES OF SCREWS | | | |
|--------------------------------|-------------------------------|-------------|-----------------|
| Callout | Fastener/Part Description | Torque (Nm) | Torque (Lbs-In) |
| 1203 | Bearing End Plate Screws | 4 | 35 |
| 1203 | Upper Gear Box Cover Screws | 4.5 | 40 |
| 286 | Lower Gear Box Cover Screws | 3 | 27 |
| 1202 | Nose Piece Screws | 18 | 159 |
| 1202 | Motor Housing Screws | 13 | 115 |
| 127 | Servicing Lid Screws | 1.3 | 12 |
| 129 | D-Handle Screws | 3 | 27 |
| 121 | Field Screws | 2 | 18 |
| 129 | Anti-Vibration Mechanism Scr. | 3 | 27 |
| 115 | Seal Nut | 16 | 141 |
| 125 | Strain Relief Clamp Screws | 1.3 | 12 |
| 125 | Carbon Brush Holders | 1.3 | 12 |
| M | Switch Screws | 0.5 | 4 |
| 103 | Side Handle Plate Screws | 4 | 35 |

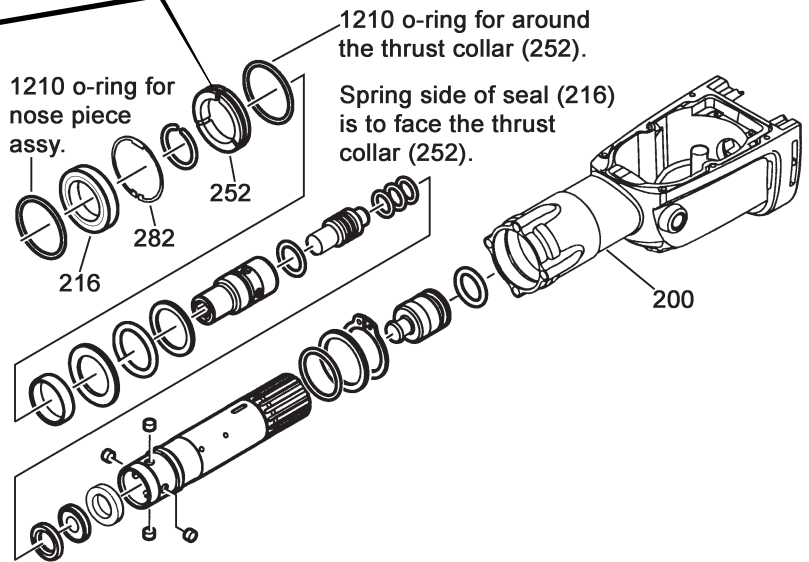
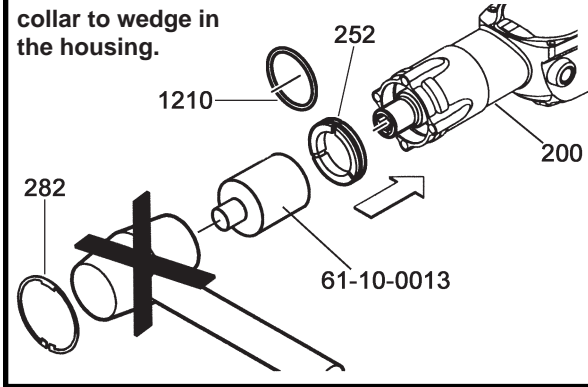
Apply blue Loctite® ThreadLocker 242 adhesive, or the equivalent, to ALL #1202 and #1203 screws prior to reassembly.

When securing upper gear box cover to gear box, tighten the six [6] upper gear box screws in sequence illustrated.



CAUTION
Screw and vibration spring cover are under spring pressure.

Place o-ring (1210) onto the thrust collar (252). Lightly grease the O.D. of the thrust collar. Insert the thrust collar assembly into gear box (200) until the outside face of the thrust collar assembly is flush with the face of the gear box. Place the open end of the service fixture 61-10-0013 over the spindle assembly and gently push the thrust collar assembly into the gearcase prior to installing the retaining ring (282). **Striking the service fixture with a hammer is not recommended, doing so may cause the thrust collar to wedge in the housing.**

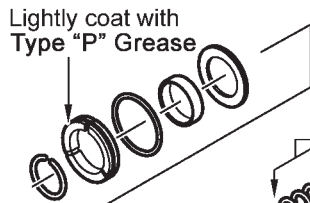


MAINTENANCE KIT CONTAINING "Q"/"Q2" GREASE, FOLLOW THESE INSTRUCTIONS

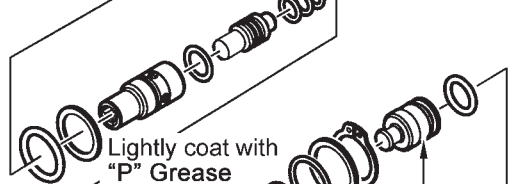
Lubrication of this tool should be performed at regular intervals or when the carbon brushes switch off at the latest.

After the tool is completely disassembled, remove all of the old grease and replace with the new grease as indicated.

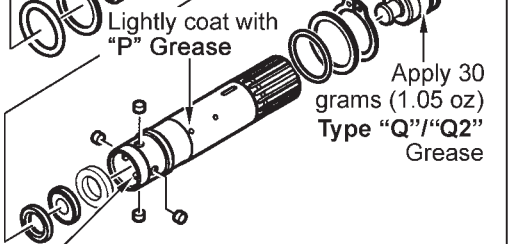
**FOR
5337-20
HAMMERS**



Lightly coat with Type "P" Grease



Lightly coat with Type "Q"/"Q2" Grease



Lightly coat with "P" Grease

Apply 30 grams (1.05 oz) Type "Q"/"Q2" Grease

Place 5 grams (.175 oz) Type "Q"/"Q2" Grease

Approximately 190 grams (6.7 oz) of Type "P" Grease and 37 grams (1.32 oz) of Type "Q" or Type "Q2" Grease will be needed in total.

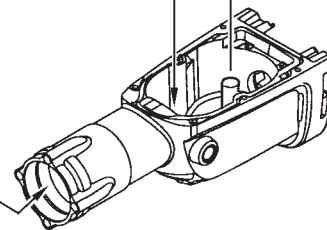
Place 120 grams (4.25 oz) Type "P" Grease

Place 50 grams (1.75 oz) Type "P" Grease

Apply 2 grams (.07 oz) Type "Q"/"Q2" Grease

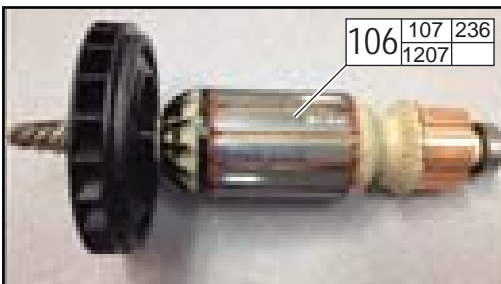
Apply 20 g (.70 oz) with "P" Grease

Lightly coat with "P" Grease



| LUBRICATION CHART | | | |
|-------------------|-------------------------------|-------------|-----------|
| LUBRICATION | DESCRIPTION | CATALOG NO. | QTY. REQ. |
| ◆ | Type "P" Grease (100 g tube) | 49-08-5350 | 2 |
| ◆ | Type "Q" Grease (45 g tube) | 49-08-4255 | 1 |
| | OR | | |
| ◆ | Type "Q2" Grease (45 g tube) | 49-08-5345 | 1 |
| | Hammer Bit Grease (20 g tube) | 49-08-5383 | 1 |

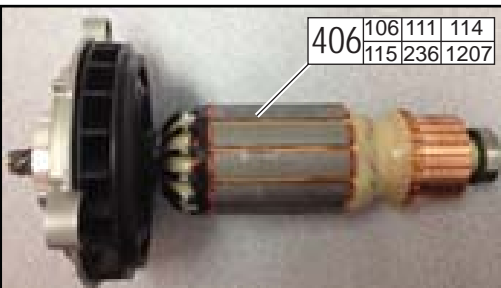
◆=Component of the 14-46-0041 Maintenance Set. **Note:** Maintenance Set includes either "Q" or "Q2" grease, not both!



#106, No. 16-10-0137
Armature Assembly
(Armature, fan and rear
ball bearing) with
Crank Assembly #236



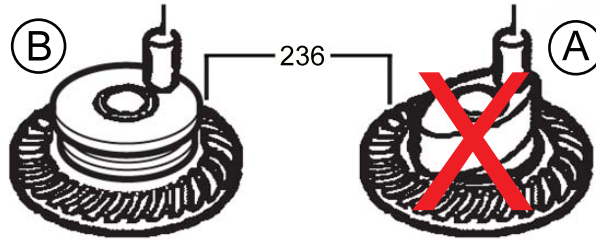
236 (Crank Assembly)



#406, No. 16-10-0138
Armature Assembly
(Armature, fan, rear ball
bearing, bearing end
plate, retaining ring, seal
nut and front ball
bearing) with Crank
Assembly #236



236 (Crank Assembly)



The 'A' profile of Crank Assembly #236 was manufactured into the hammer models listed below. The 'A' design is no longer available. The 'B' profile of Crank Assembly #236 is the direct replacement.

3/4" Hex Demolition Hammer **5337-20**, serial break **A47A**
 SDS Max Demolition Hammer **5339-20**, serial break **A48A**
 2" Spline Rotary Hammer **5340-20**, serial break **A49A**
 SDS Max Rotary Hammer **5342-20**, serial break **A50A**

The 'B' Crank Assembly is not available as an individual part but is a component of #106, Armature Assembly 16-10-0137 and #406, Armature Assembly 16-10-0138. When installing any of these two armature assemblies, the new 'B' crank assembly that is supplied must be used.

DISCARD 'A' profile Crank Assemblies. DO NOT attempt to utilize an old crank assembly with the 'A' profile with a new service armature assembly! This may cause extensive damage to the tool.