

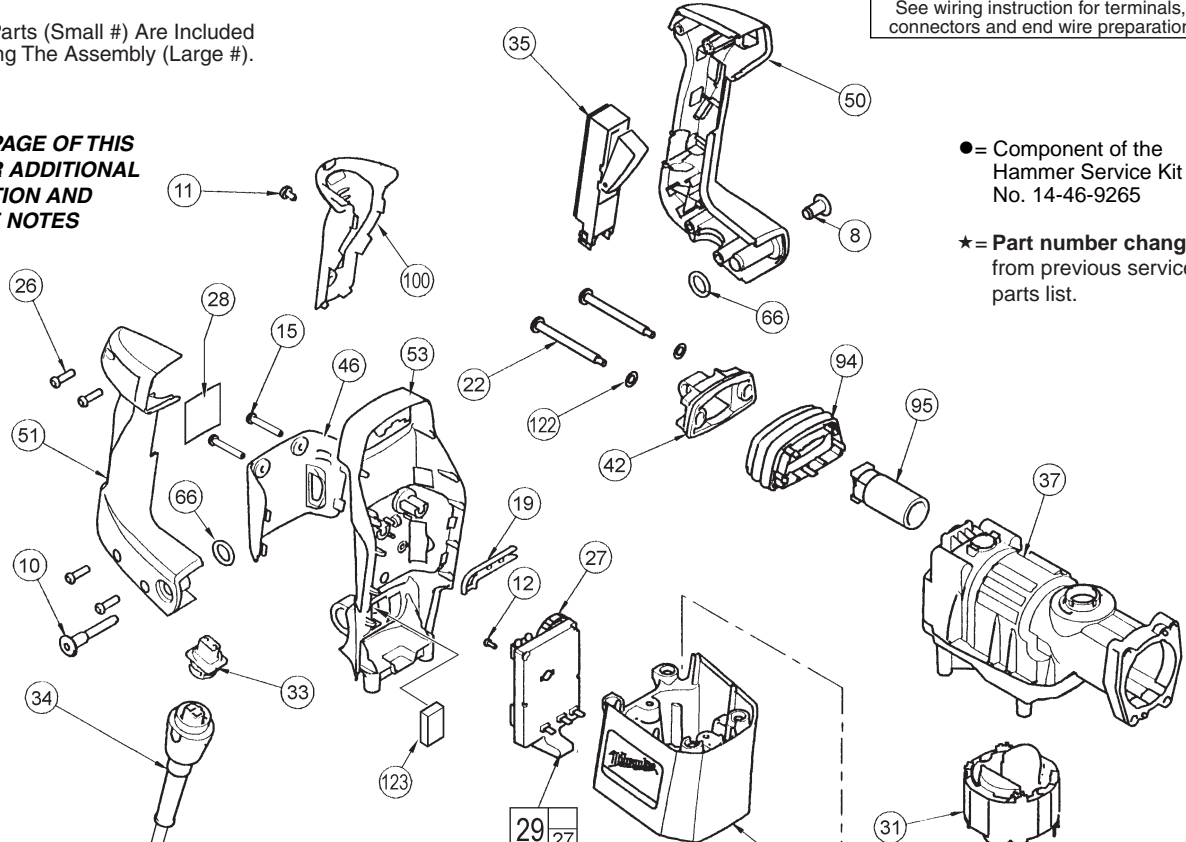


SERVICE PARTS LIST

| | | | |
|---|---------|--------------------|-----------|
| SPECIFY CATALOG NO. AND SERIAL NO. WHEN ORDERING PARTS | | REVISED BULLETIN | DATE |
| 1-1/2" (40mm) ROTARY HAMMER | | 54-24-3825 | Feb. 2007 |
| CATALOG NO. | 5321-21 | WIRING INSTRUCTION | |
| STARTING SERIAL NO. | 354B | 58-01-1850 | |
| See wiring instruction for terminals, connectors and end wire preparation | | | |

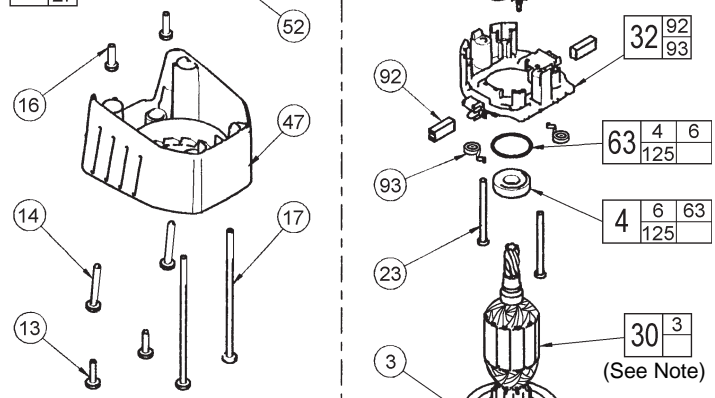
EXAMPLE:
 Component Parts (Small #) Are Included
 When Ordering The Assembly (Large #).

▲SEE BACK PAGE OF THIS BULLETIN FOR ADDITIONAL LUBRICATION AND SERVICE NOTES



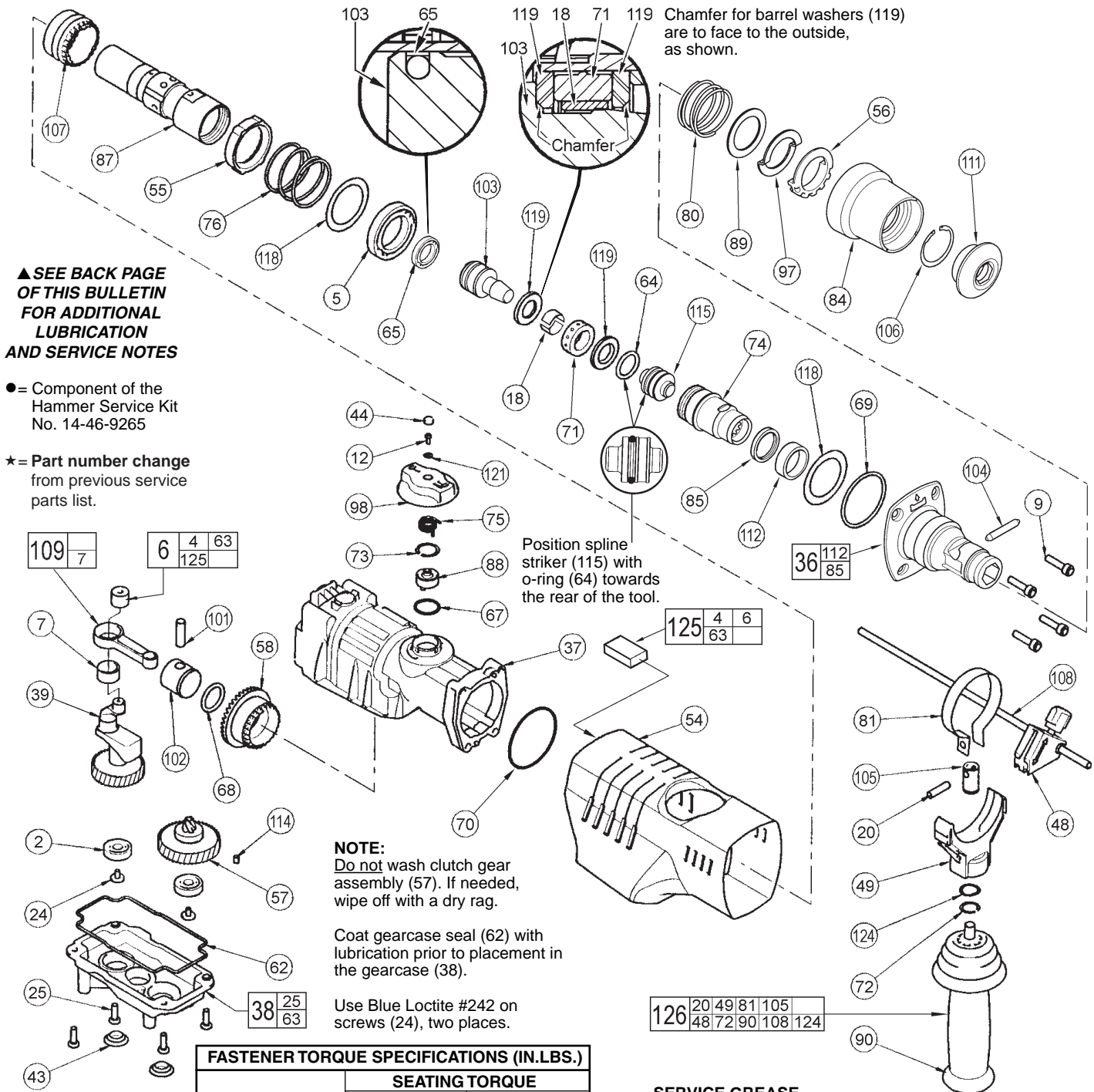
● = Component of the Hammer Service Kit No. 14-46-9265
 ★ = Part number change from previous service parts list.

| FIG. | PART NO. | DESCRIPTION OF PART | NO. REQ. |
|------|----------|-----------------------------------|----------|
| | 1 | Ball Bearing | (1) |
| | 3 | Fan | (1) |
| | 4 | Vent Kit | (1) |
| | 8 | Pivot Nut | (1) |
| | 10 | Pivot Bolt | (1) |
| | 11 | K50 x 8mm Pan Hd. Plastite Screw | (1) |
| | 12 | K35 x 8mm Pan Hd. Plastite Screw | (1) |
| | 13 | K60 x 20mm Pan Hd. Plastite Screw | (2) |
| | 14 | K60 x 40mm Pan Hd. Plastite Screw | (2) |
| | 15 | K50 x 30mm Pan Hd. PT-DG Screw | (2) |
| | 16 | K60 x 18mm Pan Hd. PT-DG Screw | (2) |
| | 17 | K60 x 120mm Pan Hd. PT-DG Screw | (2) |
| | 19 | Light Pipe | (1) |
| | 22 | Pan Hd. Cap Screw | (2) |
| | 23 | Slotted Plastite Torx Screw | (2) |
| | 26 | K50 x 18mm Pan Hd. Plastite Screw | (4) |
| | 27 | Thumbwheel | (1) |
| | 28 | Service Nameplate Kit | (1) |
| | 29 | Electronics Assembly | (1) |
| | 30 | Armature Kit (See Service Note) | (1) |
| | 31 | Field | (1) |
| | 32 | Brush Card Assembly | (1) |
| | 33 | Blade Housing Assembly | (1) |
| | 34 | Quik-Lok Cord Set | (1) |
| | 35 | Switch | (1) |
| | 37 | Crankcase Assembly | (1) |
| | 42 | Upper Handle Mount | (1) |
| | 46 | Module Cover | (1) |
| | 47 | Motor Cover | (1) |
| | 50 | Left Handle Half | (1) |
| | 51 | Right Handle Half | (1) |
| | 52 | Motor Housing | (1) |
| | 53 | Rear Shroud | (1) |
| | 63 | Vent Kit | (1) |
| | 66 | O-Ring | (2) |
| | 86 | ● Bearing Cup | (1) |



Armature Service Note:
 When servicing the armature, use Armature Kit No. 16-30-0641.
 If the tool has a spacer in the armature bearing bore of the gearcase, remove the spacer and install O-Ring No. 34-40-4215 into the empty groove. The O-Ring is provided in the kit.

| FIG. | PART NO. | DESCRIPTION OF PART | NO. REQ. |
|------|----------|---|----------|
| | 92 | ● Carbon Brush Kit (Includes 2 Brushes) | (1) |
| | 93 | Brush Spring | (2) |
| | 94 | Bellows | (1) |
| | 95 | Isolation Module Assembly | (1) |
| | 100 | Cushion Grip | (1) |
| | 122 | Rubber Washer | (2) |
| | 123 | Handle Seal | (1) |



▲ SEE BACK PAGE OF THIS BULLETIN FOR ADDITIONAL LUBRICATION AND SERVICE NOTES

● = Component of the Hammer Service Kit No. 14-46-9265

★ = Part number change from previous service parts list.

FASTENER TORQUE SPECIFICATIONS (IN.LBS.)

| FIG. NO. | SEATING TORQUE | |
|---------------|----------------|--------------|
| | MINIMUM | MAXIMUM |
| 9 | 120 | 140 |
| 10 | 20 | 25 |
| 11 | 3 | 6 |
| 12 | 4 | 8 |
| 13 | 20 | 25 |
| 14 | 20 | 25 |
| 15 | 15 | 20 |
| 16 | 50 | 55 |
| 17 | 30 | 35 |
| 22 | 30 | 35 |
| 23 | 12 | 17 |
| 24 | 20 | 25 |
| 25 | 45 | 50 |
| 26 | 15 | 20 |
| 74 | 130 FT. LBS. | 200 FT. LBS. |
| 87 | 130 FT. LBS. | 200 FT. LBS. |
| Switch Screws | 4 | 6 |

SERVICE GREASE-

● "S2" Grease, No. 49-08-5265 7 oz. tube

● 14-46-9265 HAMMER SERVICE KIT

THIS KIT CONTAINS:

- | | | |
|---|------------|------------------------|
| 2 | 31-12-0040 | Cap Plug |
| 1 | 34-40-0240 | Gearcase Seal |
| 1 | 34-40-4350 | O-Ring |
| 1 | 34-40-4477 | Cap Seal |
| 1 | 34-40-4215 | O-Ring |
| 1 | 34-40-4510 | O-Ring |
| 1 | 34-40-4530 | O-Ring |
| 1 | 34-40-4570 | Damping Washer |
| 1 | 42-96-0125 | Bearing Cup |
| 2 | 45-22-0680 | Split Sleeve |
| 1 | 22-18-1355 | Carbon Brush Kit |
| 1 | 49-08-5265 | "S2" Grease, 7oz. Tube |

● 22-18-1355 CARBON BRUSH SERVICE KIT

THIS KIT CONTAINS:

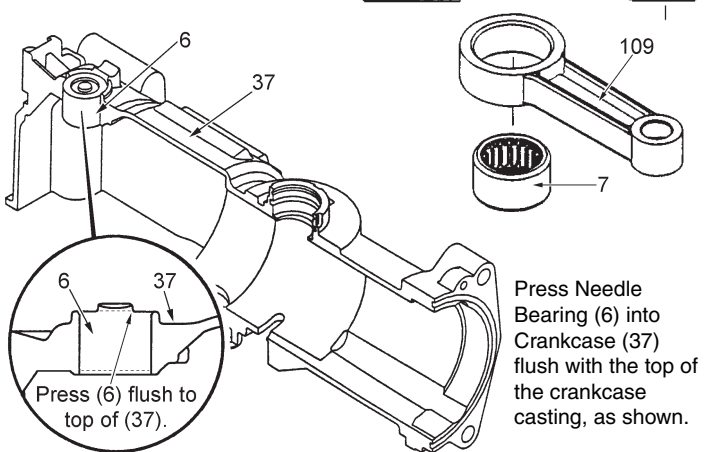
- | | | |
|---|-------|--------------|
| 2 | ----- | Carbon Brush |
|---|-------|--------------|

| FIG. | PART NO. | DESCRIPTION OF PART | NO. REQ. |
|-------|------------|----------------------------------|----------|
| 2 | 02-04-0911 | Ball Bearing | (2) |
| 5 | 02-08-0640 | Ball Bearing | (1) |
| 6 | 14-46-0040 | Vent Kit | (1) |
| 7 | 02-50-4020 | Needle Bearing | (1) |
| 9 | 05-74-0625 | M6 Socket Head Cap Screw | (4) |
| 12 | 05-88-5910 | K35 x 8mm Pan Hd. Plastite Screw | (1) |
| 18 | 45-22-0680 | ● Split Sleeve | (2) |
| 20 | 06-65-1660 | Dowel Pin | (1) |
| 24 | 06-82-8842 | Slotted Taptite Torx Screw | (2) |
| 25 | 05-88-9910 | K50 x 22mm PT-DG Screw | (4) |
| 36 | 14-46-1980 | Spline Nose Kit | (1) |
| 37 | 28-14-2541 | Crankcase Assembly | (1) |
| 38 | 14-46-2565 | Gearcase Service Kit | (1) |
| 39 | 14-09-0160 | Crankshaft Assembly | (1) |
| 43 | 31-12-0040 | ● 5/8 Cap Plug | (2) |
| 44 | 31-12-0185 | Screw Cap | (1) |
| 48 | 14-34-0551 | Depth Rod Mount Assembly | (1) |
| 49 | 31-44-2010 | Side Handle Housing | (1) |
| 54 | 31-55-0301 | Main Shroud | (1) |
| 55 | 31-58-0150 | Locking Ring | (1) |
| 56 | 31-86-0225 | Spacer | (1) |
| ★ 57 | 14-08-0210 | Clutch Gear Assembly | (1) |
| 58 | 32-30-0060 | Drive Gear | (1) |
| 62 | 34-40-0240 | ● Gearcase Seal | (1) |
| ★ 64 | 34-40-4350 | ● O-Ring | (1) |
| ★ 65 | 34-40-4477 | ● Capseal | (1) |
| 67 | 34-40-4500 | O-Ring | (1) |
| 68 | 34-40-4510 | ● O-Ring | (1) |
| 69 | 34-40-4520 | O-Ring | (1) |
| 70 | 34-40-4530 | ● O-Ring | (1) |
| 71 | 34-40-4570 | ● Damping Washer | (1) |
| 72 | 34-60-2580 | External Retaining Ring | (1) |
| 73 | 34-80-5010 | Retaining Ring | (1) |
| 74 | 38-50-6300 | Spline Driver | (1) |
| 75 | 40-50-0370 | Shift Spring | (1) |
| 76 | 40-50-0380 | Compression Spring | (1) |
| 80 | 40-50-0360 | Compression Spring | (1) |
| 81 | 42-16-0155 | Side Handle Band | (1) |
| 84 | 42-76-0740 | Chuck Collar | (1) |
| 85 | 45-06-0560 | Oil Seal | (1) |
| 87 | 42-98-0260 | Barrel | (1) |
| 88 | 14-14-0170 | Shift Disk Assembly | (1) |
| 89 | 45-88-1380 | Bitlock Washer | (1) |
| 90 | 14-34-0516 | Side Handle Assembly | (1) |
| 97 | 45-88-1070 | Stepped Washer | (1) |
| 98 | 14-34-0180 | Shift Knob Assembly | (1) |
| 101 | 44-60-1710 | Wrist Pin | (1) |
| 102 | 44-62-0230 | Piston | (1) |
| 103 | 44-82-0220 | Ram | (1) |
| 104 | 44-60-1640 | Bitlock Pin | (1) |
| 105 | 44-86-0620 | Band Retainer | (1) |
| 106 | 34-60-2590 | Retaining Ring | (1) |
| 107 | 44-90-0175 | Shift Ring | (1) |
| 108 | 44-94-0165 | Depth Gauge Rod | (1) |
| 109 | 44-94-0395 | Connecting Rod Assembly | (1) |
| 111 | 45-06-0040 | Dust Seal | (1) |
| 112 | 45-88-5176 | Felt Seal | (1) |
| 114 | 45-30-0060 | Retaining Slug | (1) |
| 115 | 45-56-2570 | Spline Striker | (1) |
| 118 | 45-88-1565 | Washer | (2) |
| 119 | 45-88-4005 | Barrel Washer | (2) |
| 121 | 45-88-7170 | Washer | (1) |
| 124 | 45-88-8730 | Wave Washer | (1) |
| 125 | 14-46-0040 | Vent Kit | (1) |
| ★ 126 | 14-34-0585 | Side Handle Assembly Kit | (1) |

NOTE: Check the clutch torque. Clutch must slip at 40 to 50 ft.lbs. at the spindle, checked clockwise as viewed from the front of the tool.

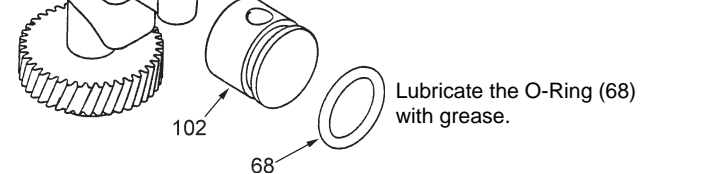
▲ SEE BACK PAGE OF THIS BULLETIN FOR ADDITIONAL LUBRICATION AND SERVICE NOTES

Press Needle Bearing (7) in Connecting Rod (109) so that the same amount sticks out on both sides of the Rod.

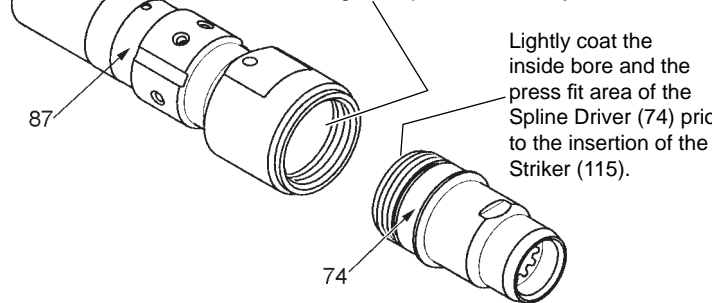


LUBRICATION NOTES: (TYPE "S2" GREASE, NO. 49-08-5265)

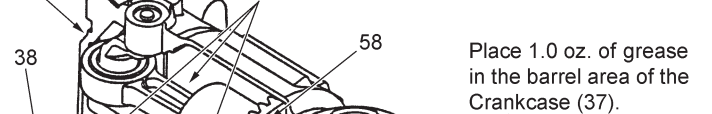
Fill Piston (102) with "S2" grease and assemble to Connecting Rod (109) with the Wrist Pin (101). Front surface of Piston (102) and the Ram (103) is to be free of grease.



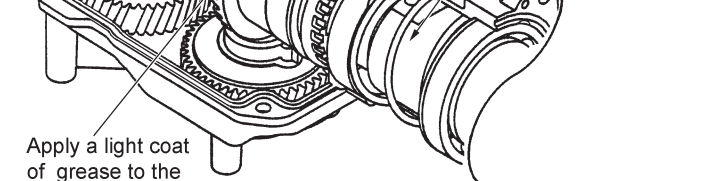
Lightly coat the inside of the Barrel (87) with grease prior to assembly.



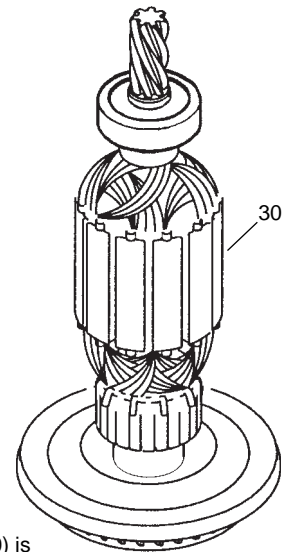
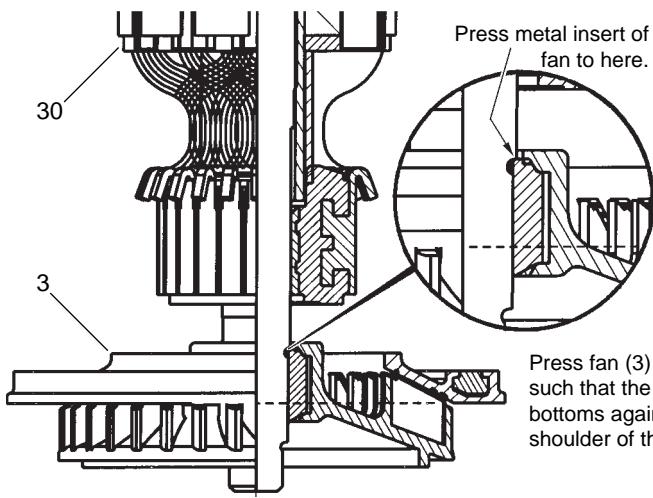
Fill cavity of Crankcase (37) with 5.5 oz. of grease.



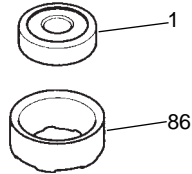
Apply a light coat of grease to the Drive Gear (58) prior to assembly.



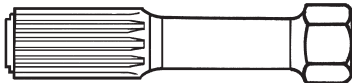
Prior to assembly, apply a light coat of grease to the Gearcase Seal (62) and O-Rings (63, 64, 67, 68 and 70).



After the armature assembly (30) is installed into the tool, the bearing cup (86) is to be placed on the rear armature bearing (1), (already pressed onto the armature shaft), prior to assembling the motor cover (47) to the tool.



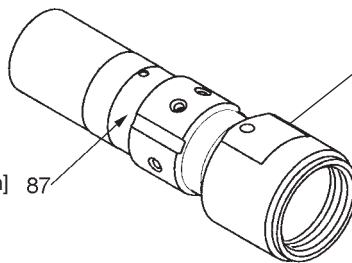
NOTE: Do not dislodge the bearing cup from the bearing during assembly.



61-10-2065 Spline Shank



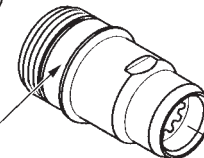
3/4"
[19mm]
Hex



Barrel

when tightened in a vise, **extra care** should be taken not allowing the barrel to turn and mar or burr it's finished cylindrical surface.

no loctite® is required on threads of spline driver or barrel.



Spline Driver

torque to 130-160 ft-lbs.
[176-217 Newton-meters]

BARREL / SPLINE DRIVER SERVICING-

To aid in the servicing of the Barrel and Spline Driver of the 5321-21 Spline Drive Rotary Hammer, a Service Tool No. 61-10-2065 has been developed [see illustrations].

- clamp the flats of the Barrel in a vise.
- use a 3/4" [19mm] socket on the hex of Service Tool to either remove [turning counter-clockwise] or install [turning clockwise] the Spline Driver.

SERVICE NOTE:
SLIP CLUTCH VALUES

When servicing this Spline Drive Rotary Hammer, the static torque required to slip the clutch mechanism should be checked. It must not exceed the maximum value shown below:

- block armature from rotating.
- using service tool and ft-lb [newton-meter] torque wrench with 3/4" [19mm] socket, check the static torque required to slip the Spline Driver / Clutch Mechanism of the Rotary Hammer.
- **the torque for the 5321-21 should be 40-50 ft-lb. [52-68 Nm].**