



# SERVICE PARTS LIST

**BUL. 54-24-3507**

## ROTARY HAMMER

REVISED BUL. 54-24-3506 DATE Oct. '74

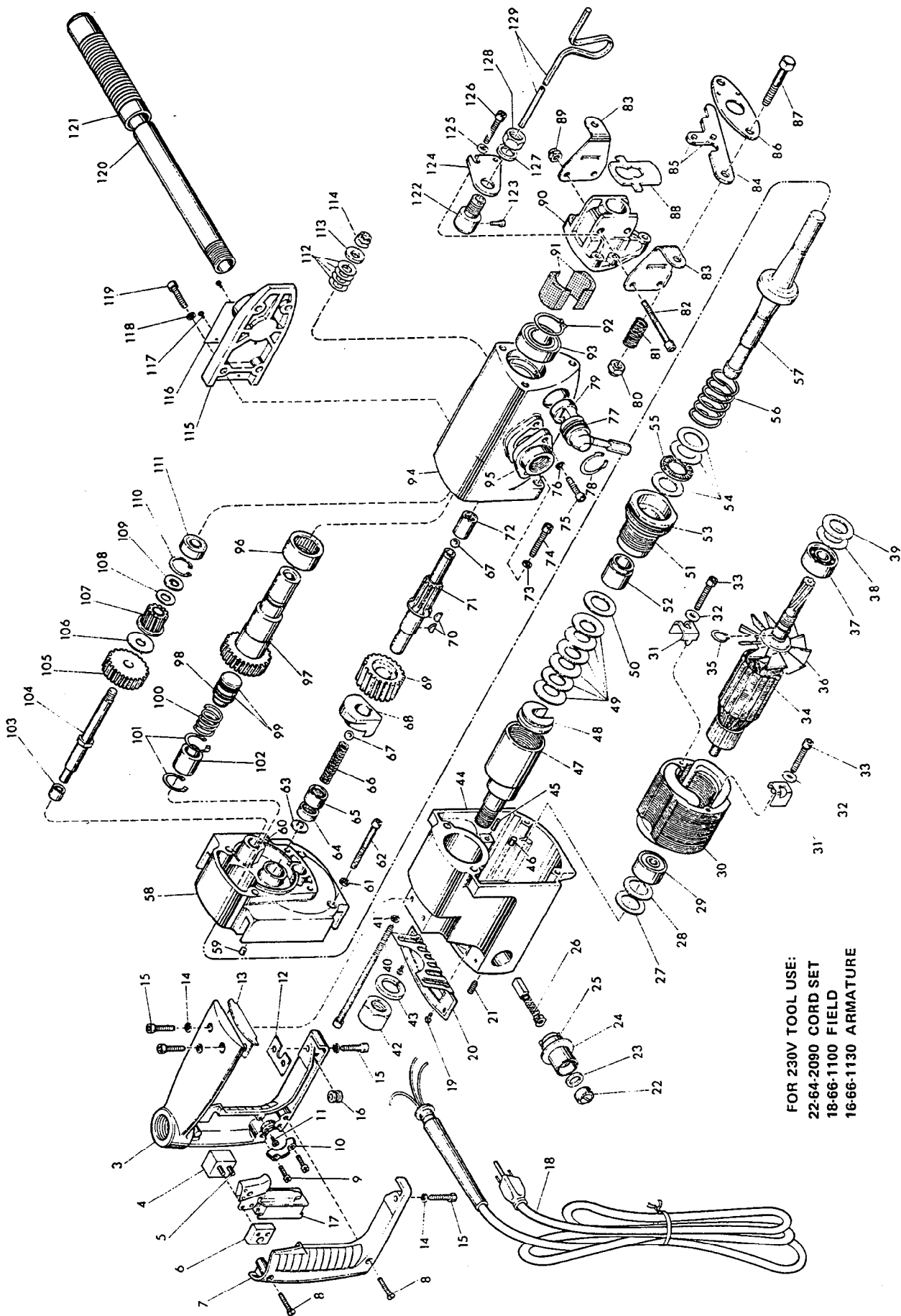
**Catalog No. 5300**

Starting Serial No. **342-70313**

WIRING INSTRUCTIONS **58-01-0510**

Specify Catalog and Serial No. when ordering parts

FIG.	PART NO.	DESCRIPTION OF PART	NO. REQ.	FIG.	PART NO.	DESCRIPTION OF PART	NO. REQ.
1	14-34-0142	Handle Assembly (Fig. Nos. 2 thru 13)(1)	(1)	67	02-02-0340	11/32 Steel Ball	(2)
2	28-44-1174	Handle Assembly (Fig. Nos. 3 thru 6) (1)	(1)	68	42-50-0071	Cam	(1)
3	28-44-1173	Handle	(1)	★69	32-42-1310	First Intermediate Gear	(1)
4	44-52-0090	Switch Mounting Pad	(1)	70	06-42-1200	Woodruff Key	(2)
5	06-65-1575	5/32x7/8 Roll Pin	(2)	71	36-10-0701	Cam Shaft	(1)
6	44-52-0100	Switch Mounting Pad	(1)	72	02-50-3230	Needle Bearing	(1)
7	28-20-3572	Handle Cover	(1)	73	06-97-4050	1/4 Lock Washer	(2)
8	06-81-3700	8-32x7/8 Oval Hd. Screw	(2)	74	06-75-3175	1/4-20x1-1/8 Skt. Hd. Screw	(2)
9	06-81-6150	8-32x1/2 Fil. Hd. Sem	(1)	75	06-75-3050	1/4-20x3/4 Skt. Hd. Screw	(2)
10	28-17-0400	Clamp Strap	(1)	76	06-97-4050	1/4 Lock Washer	(2)
11	06-81-8625	6-32x1/4 Ground Screw	(1)	77	34-40-1150	O-Ring	(1)
12	43-44-0200	Gasket	(1)	78	34-80-1500	Retaining Ring	(1)
13	43-44-0190	Front Handle Gasket	(1)	★79	42-50-0095	Shift Cam	(1)
14	06-97-4050	1/4 Lock Washer	(4)	80	06-57-5150	3/8-16 Lock Nut	(2)
15	06-75-3050	1/4-20x3/4 Skt. Hd. Screw	(4)	81	40-50-6402	Tool Retaining Spring	(2)
16	22-90-0050	Grommet	(1)	82	06-75-3350	1/4-20x2 Skt. Hd. Screw	(2)
17	23-66-0490	Switch	(1)	★83	42-36-0750	Tool Retainer Bracket	(2)
★18	22-64-0090	Cord Set	(1)	84	44-86-0161	Tool Retainer Assembly (Includes Fig. No. 85)	(1)
19	06-81-8650	6-32x1/4 Rd. Hd. Sem	(4)	85	06-92-0300	6x3/16 Stud	(2)
20	12-98-6560	Nameplate	(1)	86	44-66-0531	Tool Retainer Plate	(1)
21	06-83-2670	1/4-20x1/2 Knrl. Set Screw	(2)	87	06-75-0600	3/8-16x1-3/4 Hex Hd. Screw	(2)
22	23-44-0100	Brush Retaining Screw	(2)	★88	44-66-0580	Tool Adapter Plate	(1)
23	43-44-0180	Brush Cap Gasket	(2)	89	06-57-5000	1/4-20 Lock Nut	(2)
24	23-86-0075	Insulating Washer	(2)	★90	30-16-6055	Nose Cap	(1)
25	22-22-0210	Brush Holder Assembly	(2)	91	45-06-0201	Felt Spindle Seal (Two Halves)	(1)
26	22-18-0330	Carbon Brush Assembly	(2)	92	34-60-1875	Retaining Ring	(1)
27	45-88-0490	Commutator End Washer (Neoprene)	(1)	★93	02-04-2535	Ball Bearing	(1)
28	45-88-5402	Flat Washer (Steel)	(1)	★94	28-14-1175	Gear Case	(1)
29	02-04-0970	Ball Bearing	(1)	95	28-02-0321	Side Handle Adapter	(1)
30	18-62-1100	115 Volt Field	(1)	96	02-50-7810	Needle Bearing	(1)
★31	42-68-0360	Field Mounting Clamp	(2)	★97	32-75-2630	Spindle Gear	(1)
★32	45-88-5220	Washer	(2)	98	45-06-0121	Spindle Seal	(1)
★33	06-75-3175	1/4-20x1-1/8 Skt. Hd. Screw	(2)	99	34-40-1120	O-Ring	(2)
34	16-62-1130	115 Volt Armature (Include Fig. Nos. 35 & 36)	(1)	100	40-50-6403	Spindle Seal Spring	(1)
35	34-60-1400	Snap Ring	(1)	101	34-80-1000	Retaining Ring	(2)
36	22-84-0360	L.H. Fan Assembly	(1)	102	42-40-0370	Spindle Gear Bushing	(1)
37	02-04-1640	Ball Bearing	(1)	103	02-50-2425	Needle Bearing	(1)
38	45-88-5405	Flat Washer (Steel)	(1)	104	36-14-0051	Clutch Shaft	(1)
39	45-88-0500	Pinion End Washer (Neoprene)	(1)	105	32-44-1301	Intermediate Gear	(1)
40	06-75-3620	1/4-20x4-1/2 Skt. Hd. Screw	(2)	106	45-88-0470	Clutch Washer	(1)
41	06-97-4050	1/4 Lock Washer	(2)	★107	32-60-1030	Pinion Gear	(1)
42	06-55-3700	3/4-16 Hex Nut	(1)	108	45-88-0480	Clutch Washer	(1)
43	06-97-4350	13/16 Lock Washer	(1)	109	45-88-5250	Flat Keyed Washer	(1)
44	28-50-6071	Motor Housing (Includes Fig. Nos. 45 & 46)	(1)	110	34-80-1510	Retaining Ring	(1)
45	06-65-0630	3/16x1/2 Drivlok Pin	(1)	★111	02-04-1015	Ball Bearing	(1)
46	45-30-0110	Ball Bearing Retaining Slug	(1)	112	40-50-6200	Clutch Disc Spring	(4)
47	45-58-0180	Spring Housing Stud	(1)	113	45-88-5255	Flat Washer	(1)
48	44-86-0151	Ram Retainer	(1)	114	06-57-5200	3/8-24 L.H. Lock Nut	(1)
49	40-50-6100	Ram Disc Spring	(6)	115	28-20-1101	Gear Case Cover (Includes Fig. Nos. 116 & 117)	(1)
50	45-88-5415	Flat Washer	(1)	116	12-98-6510	Instruction Plate	(1)
51	43-76-0202	Spring Housing Assembly (Includes Fig. No. 52)	(1)	117	06-81-8200	4-36x3/16 Rd. Hd. Sem	(2)
52	42-40-0272	Bushing	(1)	118	06-97-4050	1/4 Lock Washer	(4)
53	34-40-2200	O-Ring	(1)	119	06-75-3050	1/4-20x3/4 Skt. Hd. Screw	(4)
54	45-88-5417	Flat Washer	(3)	120	43-62-0230	Pipe Handle	(1)
55	02-80-1700	Thrust Bearing	(1)	121	43-62-0242	Handle	(1)
56	40-50-6000	Ram Spring	(1)	★122	43-76-0370	Depth Gauge Housing	(1)
57	44-82-0061	Ram	(1)	★123	06-75-2950	1/4-20x1/2 Skt. Hd. Screw	(1)
58	28-28-1401	Diaphragm (Incl. Fig. Nos. 59 & 60)	(1)	★124	42-36-0970	Depth Gauge Bracket	(1)
59	45-30-0110	Ball Bearing Retaining Slug	(1)	125	06-97-4050	1/4 Lock Washer	(3)
60	06-65-0630	3/16x1/2 Drivlok Pin	(1)	126	06-75-3175	1/4-20x1-1/8 Skt. Hd. Screw	(3)
61	06-97-4050	1/4 Lock Washer	(2)	★127	06-97-4200	1/2" Lock Washer	(1)
62	06-75-3350	1/4-20x2 Skt. Hd. Screw	(2)	★128	06-55-3100	1/2-20 Hex Nut	(1)
63	43-06-0110	Disc	(1)	★129	44-94-0230	Depth Gauge Rod	(1)
64	02-50-4015	Needle Bearing	(1)	130	06-97-1700	Lock Washer (For Switch)	(4)
65	02-50-4020	Needle Bearing	(1)	131	45-96-0080	Clutch Adjusting Wrench (Not Shown)	(1)
66	40-50-6401	Cam Shaft Spring	(1)	★132	49-96-0085	3/16 Hex Key (Not Shown)	(1)
				★133	12-98-7081	Caution Label (Not Shown)	(1)



FOR 230V TOOL USE:  
 22-64-2090 CORD SET  
 18-66-1100 FIELD  
 16-66-1130 ARMATURE