



# SERVICE PARTS LIST

**BUL. 54-24-3506**

## ROTARY HAMMER

REVISED BUL. 54-24-3506 DATE JULY '73

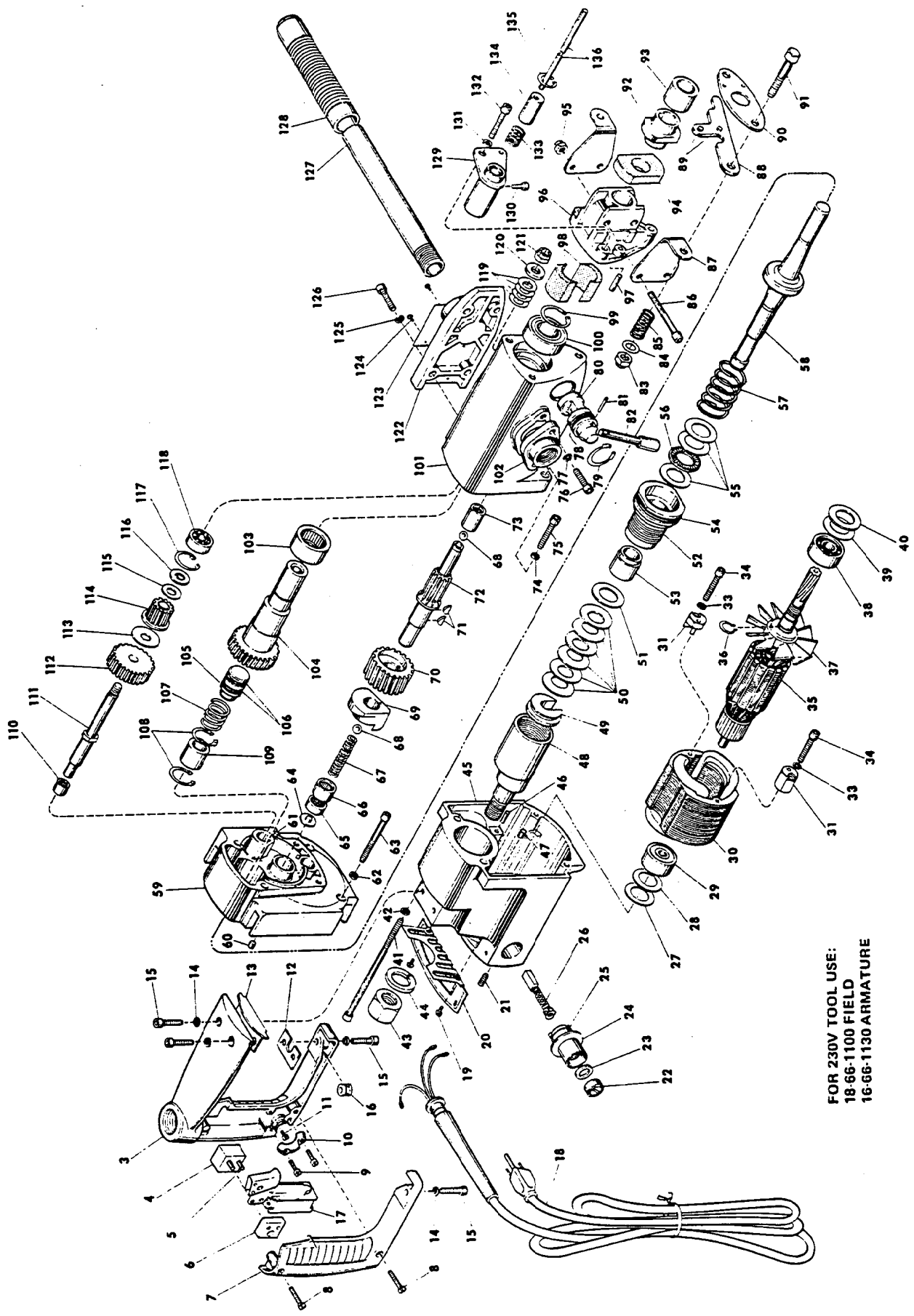
**Catalog No. 5300**

Starting Serial No. **342-21060**

WIRING INSTRUCTIONS **58-01-0510**

Specify Catalog and Serial No. when ordering parts

FIG.	PART NO.	DESCRIPTION OF PART	NO. REQ.	FIG.	PART NO.	DESCRIPTION OF PART	NO. REQ.
1	14-34-0142	Handle Assembly (Fig. Nos. 2 thru 13)	(1)	70	32-42-1281	First Intermediate Gear	(1)
2	28-44-1174	Handle Assembly (Fig. Nos. 3 thru 6)	(1)	71	06-42-1200	Woodruff Key	(2)
3	28-44-1173	Handle	(1)	72	36-10-0701	Cam Shaft	(1)
4	44-52-0090	Switch Mounting Pad	(1)	73	02-50-3230	Needle Bearing	(1)
5	06-65-1575	5/32x7/8 Roll Pin	(2)	74	06-97-4050	1/4 Lock Washer	(2)
6	44-52-0100	Switch Mounting Pad	(1)	75	06-75-3175	1/4-20x1-1/8 Skt. Hd. Screw	(2)
7	28-20-3572	Handle Cover	(1)	76	06-75-3050	1/4-20x3/4 Skt. Hd. Screw	(2)
8	06-81-3700	8-32x7/8 Oval Hd. Screw	(2)	77	06-97-4050	1/4 Lock Washer	(2)
9	06-81-6150	8-32x1/2 Fil. Hd. Sem	(2)	78	34-40-1150	O-Ring	(1)
10	28-17-0400	Clamp Strap	(1)	79	34-80-1500	Retaining Ring	(1)
11	06-81-8625	6-32x1/4 Ground Screw	(1)	80	42-50-0095	Shift Cam Assembly (Includes Fig. No. 81 and 82)	(1)
12	43-44-0200	Gasket	(1)	81	06-65-1535	1/8x3/4 Roll Pin	(1)
13	43-44-0190	Front Handle Gasket	(1)	82	43-62-0326	Shift Cam Handle	(1)
14	06-97-4050	1/4 Lock Washer	(4)	83	06-57-5150	3/8-16 Lock Nut	(2)
15	06-75-3050	1/4-20x3/4 Skt. Hd. Screw	(4)	84	45-88-0601	Tool Retaining Washer	(2)
16	22-90-0050	Grommet	(1)	85	40-50-6402	Tool Retaining Spring	(2)
17	23-66-0490	Switch	(1)	86	06-75-3350	1/4-20x2 Skt. Hd. Screw	(2)
18	22-64-0410	Cord Set	(1)	87	42-36-0571	Tool Retainer Bracket	(2)
19	06-81-8650	6-32x1/4 Rd. Hd. Sem	(4)	88	44-86-0161	Tool Retainer Assembly (Includes Fig. No. 89)	(1)
20	12-98-6560	Nameplate	(1)	89	06-92-0300	6x3/16 Stud	(2)
21	06-83-2670	1/4-20x1/2 Knrl. Set Screw	(2)	90	44-66-0531	Tool Retainer Plate	(1)
22	23-44-0100	Brush Retaining Screw	(2)	91	06-75-0600	3/8-16x1-3/4 Hex. Hd. Screw	(2)
23	43-44-0180	Brush Cap Gasket	(2)	92	48-03-0050	Tool Adapter Assembly (Includes Fig. No. 93)	(1)
24	23-86-0075	Insulating Washer	(2)	93	45-36-0360	Tool Adapter Spacer	(1)
25	22-22-0210	Brush Holder Assembly	(2)	94	49-62-0070	Hammer Dust Shield	(2)
26	22-18-0330	Carbon Brush Assembly	(2)	95	06-57-5000	1/4-20 Lock Nut	(2)
27	45-88-0490	Commutator End Washer (Neoprene)	(1)	96	30-16-6052	Nose Cap Assembly* (Includes Fig. No. 97)	(1)
28	45-88-5402	Flat Washer (Steel)	(1)	97	06-65-1150	3/16x5/8 Groove Pin	(1)
29	02-04-0970	Ball Bearing	(1)	98	45-06-0201	Felt Spindle Seal (Two Halves)	(1)
30	18-62-1100	115 Volt Field	(1)	★ 99	34-60-1875	Retaining Ring	(1)
★ 31	30-20-0160	Field Mounting Clamp	(2)	100	02-04-2545	Ball Bearing	(1)
33	06-97-4050	1/4 Lock Washer	(2)	101	28-14-1162	Gear Case	(1)
34	06-75-3200	1/4-20x1-1/4 Skt. Hd. Screw	(2)	102	28-02-0321	Side Handle Adapter	(1)
35	16-62-1130	115 Volt Armature (Include Fig. Nos. 36 & 37)	(1)	103	02-50-7810	Needle Bearing	(1)
36	34-60-1400	Snap Ring	(1)	104	32-75-2621	Spindle Gear	(1)
37	22-84-0360	L.H. Fan Assembly	(1)	105	45-06-0121	Spindle Seal	(1)
38	02-04-1640	Ball Bearing	(1)	106	34-40-1120	O-Ring	(2)
39	45-88-5405	Flat Washer (Steel)	(1)	107	40-50-6403	Spindle Seal Spring	(1)
40	45-88-0500	Pinion End Washer (Neoprene)	(1)	108	34-80-1000	Retaining Ring	(2)
41	06-75-3620	1/4-20x4-1/2 Skt. Hd. Screw	(2)	109	42-40-0370	Spindle Gear Bushing	(1)
42	06-97-4050	1/4 Lock Washer	(2)	110	02-50-2425	Needle Bearing	(1)
43	06-55-3700	3/4-16 Hex Nut	(1)	111	36-14-0051	Clutch Shaft	(1)
44	06-97-4350	13/16 Lock Washer	(1)	112	32-44-1301	Intermediate Gear	(1)
45	28-50-6071	Motor Housing (Includes Fig. Nos. 46 & 47)	(1)	113	45-88-0470	Clutch Washer	(1)
46	06-65-0630	3/16x1/2 Drivlok Pin	(2)	114	32-60-1022	Pinion Gear	(1)
47	45-30-0110	Ball Bearing Retaining Slug	(1)	115	45-88-0480	Clutch Washer	(1)
48	45-58-0180	Spring Housing Stud	(1)	116	45-88-5250	Flat Keyed Washer	(1)
49	44-86-0151	Ram Retainer	(1)	★ 117	34-80-1510	Retaining Ring	(1)
50	40-50-6100	Ram Disc Spring	(6)	118	02-04-1020	Ball Bearing	(1)
51	45-88-5415	Flat Washer	(1)	119	40-50-6200	Clutch Disc Spring	(4)
52	43-76-0202	Spring Housing Assembly (Includes Fig. No. 53)	(1)	120	45-88-5255	Flat Washer	(1)
53	42-40-0272	Bushing	(1)	121	06-57-5200	3/8-24 L.H. Lock Nut	(1)
54	34-40-2200	O-Ring	(1)	122	28-20-1101	Gear Case Cover (Includes Fig. Nos. 123 & 124)	(1)
55	45-88-5417	Flat Washer	(3)	123	12-98-6510	Instruction Plate	(1)
56	02-80-1700	Thrust Bearing	(1)	124	06-81-8200	4-36x3/16 Rd. Hd. Sem	(2)
57	40-50-6000	Ram Spring	(1)	125	06-97-4050	1/4 Lock Washer	(4)
58	44-82-0061	Ram	(1)	126	06-75-3050	1/4-20x3/4 Skt. Hd. Screw	(4)
59	28-28-1401	Diaphragm (Incl. Fig. Nos. 60 & 61)	(1)	127	43-62-0230	Pipe Handle	(1)
60	45-30-0110	Ball Bearing Retaining Slug	(1)	128	43-62-0242	Handle	(1)
61	06-65-0630	3/16x1/2 Drivlok Pin	(1)	129	42-36-0582	Depth Gauge Bracket	(1)
62	06-97-4050	1/4 Lock Washer	(2)	130	06-75-2900	1/4-20x3/8 Skt. Hd. Screw	(1)
63	06-75-3350	1/4-20x2 Skt. Hd. Screw	(2)	131	06-97-4050	1/4 Lock Washer	(3)
64	43-06-0110	Disc	(1)	132	06-75-3175	1/4-20x1-1/8 Skt. Hd. Screw	(3)
65	02-50-4015	Needle Bearing	(1)	133	40-50-6400	Depth Gauge Spring	(1)
66	02-50-4020	Needle Bearing	(1)	134	43-84-0150	Depth Gauge Insert	(1)
67	40-50-6401	Cam Shaft Spring	(1)	135	34-80-0750	Retaining Ring	(1)
68	02-02-0340	11/32 Steel Ball	(2)	136	44-94-0120	Depth Gauge Rod	(1)
69	42-50-0071	Cam	(1)	137	06-97-1800	Lock Washer (For Switch)	(4)
				138	45-96-0080	Clutch Adjusting Wrench (Not Shown)	(1)



FOR 230V TOOL USE:  
 18-66-1100 FIELD  
 16-66-1130 ARMATURE