



SERVICE PARTS LIST

BULLETIN NO.
54-24-5260

SPECIFY CATALOG NO. AND SERIAL NO. WHEN ORDERING PARTS		REVISED BULLETIN	DATE
7/8" (2K) D-HANDLE ROTARY HAMMER			June 2013
CATALOG NO.	5262-20	SERIAL NUMBER	C88A
			WIRING INSTRUCTION See page 4

EXAMPLE:
Component Parts (Small #) Are Included
When Ordering The Assembly (Large #).

● = Component of the 14-46-5262
5262-20 Maintenance Service Kit

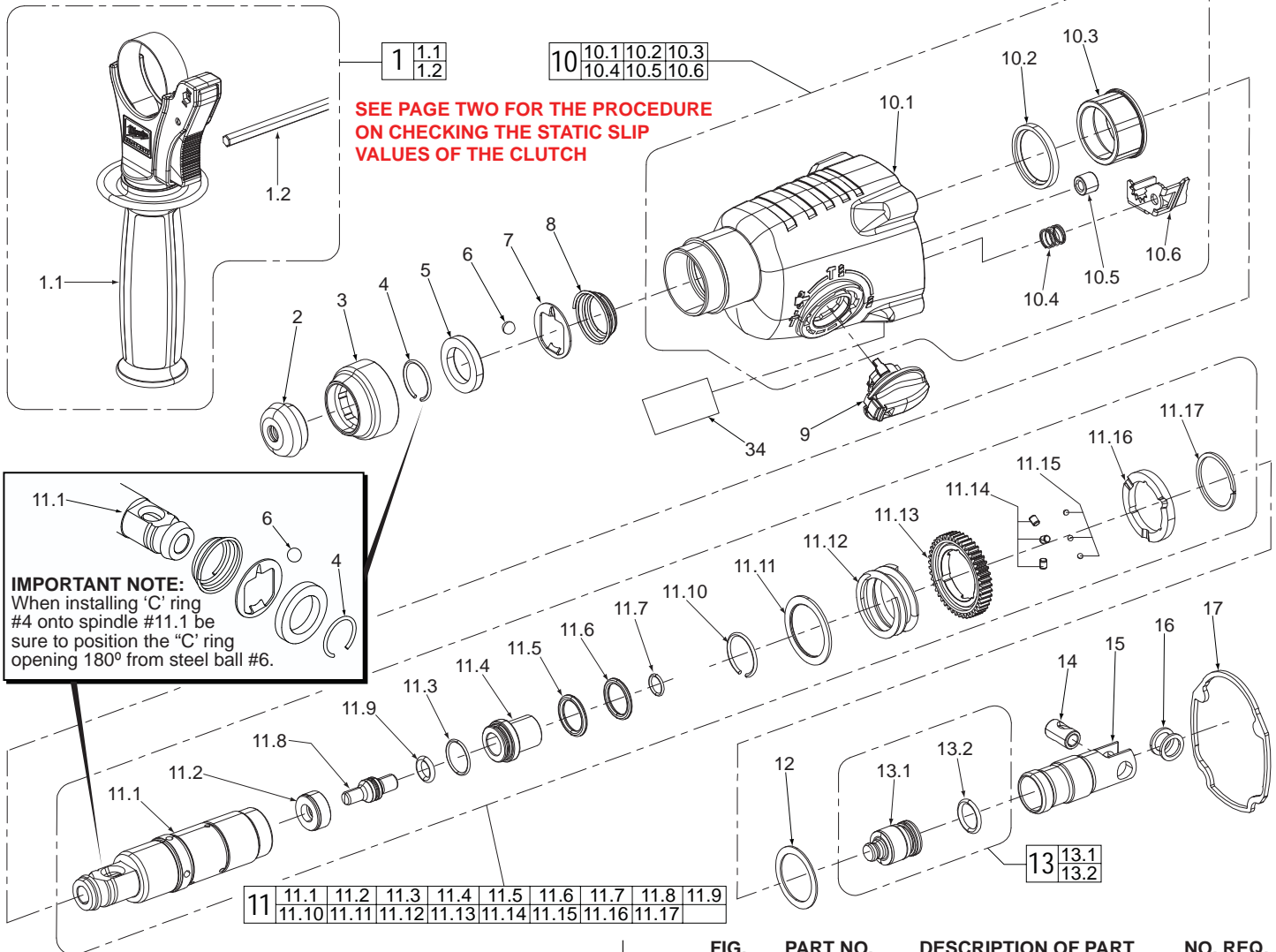


FIG.	PART NO.	DESCRIPTION OF PART	NO. REQ.
1	14-34-5262	Side Handle Assembly	(1)
1.1	31-05-5265	Side Handle	(1)
1.2	44-94-5381	Depth Rod	(1)
2	42-52-5262●	Rubber Cap	(1)
3	42-76-5262●	Collar	(1)
4	44-90-5262●	Spring Ring	(1)
5	44-90-5265	Holding ring	(1)
6	02-02-0275	Steel Ball	(1)
7	42-36-5262	Support Plate	(1)
8	40-50-5262	Pressure Spring	(1)
9	44-10-5262	Shift Lever Assembly	(1)
10	31-40-5262	Gearcase Assembly	(1)
10.1	-----	Gearcase	(1)
10.2	-----	Oil Shield	(1)
10.3	-----	Needle Bearing	(1)
10.4	40-50-0870	Pressure Spring	(1)
10.5	-----	Needle Bearing	(1)
10.6	44-90-1010	Locking Plate	(1)
11	38-50-5275	Spindle Sleeve and Gear Assy.	(1)
11.1	38-50-5262	Spindle Sleeve	(1)
11.2	45-88-2100	Stop Washer	(1)
11.3	34-40-1425●	O-Ring	(1)
11.4	45-22-0870	Sleeve / Striker Guide	(1)

FIG.	PART NO.	DESCRIPTION OF PART	NO. REQ.
11.5	34-40-1440●	O-Ring	(1)
11.6	42-76-1000	Washer	(1)
11.7	34-40-1410●	O-Ring	(1)
11.8	45-08-0650	Anvil	(1)
11.9	34-40-1450●	O-Ring	(1)
11.10	44-90-1025●	Retaining Ring	(1)
11.11	45-88-2115	Washer	(1)
11.12	40-50-1720	Pressure Spring	(1)
11.13	32-75-1830	Spindle Gear	(1)
11.14	44-96-0300	Clutch Roller	(3)
11.15	02-02-1230	Steel Ball	(3)
11.16	42-70-5262	Clutch Disc	(1)
11.17	44-90-0215●	Retaining Ring	(1)
12	45-88-5230	Washer	(1)
13	44-82-5262	Ram Assembly	(1)
13.1	45-56-0300	Ram (Striker)	(1)
13.2	34-40-1510●	O-Ring	(1)
14	44-60-5262	Wrist Pin	(1)
15	44-62-5262	Piston	(1)
16	45-88-5200●	Washer	(2)
17	43-44-5262●	Gasket	(1)
34	12-20-5262	Service Nameplate Kit	(1)

MILWAUKEE ELECTRIC TOOL CORPORATION
13135 W. LISBON RD., BROOKFIELD, WI 53005
Drwg. 6

FIG.	PART NO.	DESCRIPTION OF PART	NO. REQ.
18	28-28-5262	Diaphragm Assembly	(1)
18.1	-----	Bearing	(1)
18.2	-----	Diaphragm	(1)
18.3	-----	Needle Bearing	(1)
18.4	-----	Oil Shield	(1)
18.5	-----	Felt Block	(1)
19	16-07-5262	Armature Assembly	(1)
19.1	-----	Armature	(1)

● = Component of the 14-46-5262
5262-20 Maintenance Service Kit

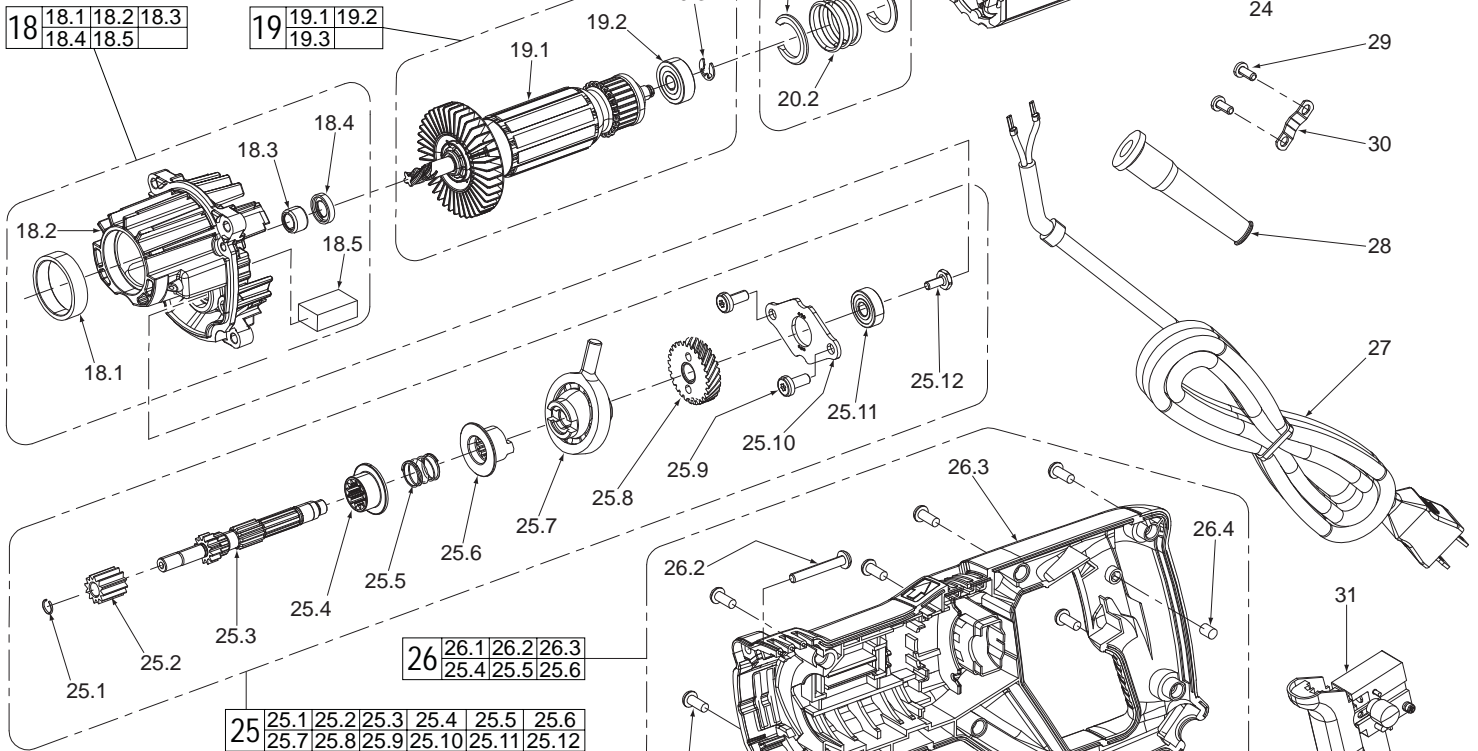
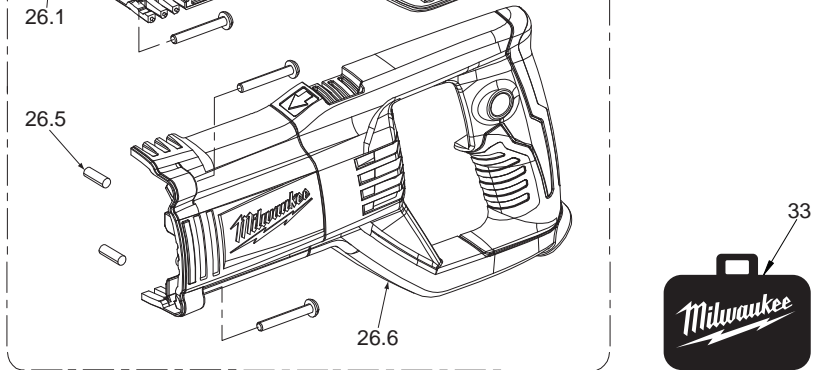


FIG.	PART NO.	DESCRIPTION OF PART	NO. REQ.
19.2	02-04-5262	Ball Bearing	(1)
19.3	44-90-5270	E-Ring	(1)
20	45-88-5205	Washer and O-Ring Assembly	(1)
20.1	45-88-5215	Split Ring Washer	(2)
20.2	34-40-5262	O-Ring	(3)
21	18-07-5262	Service Field	(1)
22	22-18-5262●	Carbon Brush Assembly	(1)
23	23-94-5262	Leadwire Assembly - White	(1)
24	23-94-5265	Leadwire Assembly - Black	(1)
25	36-66-5262	Reduction Gear Assembly	(1)
25.1	44-90-1180●	C- Ring	(1)
25.2	32-60-1610	Pinion Gear	(1)
25.3	36-66-5261	Reduction Gear Shaft	(1)
25.4	32-60-1620	Internal Gear Wheel	(1)
25.5	40-50-2140	Pressure Spring	(1)
25.6	45-22-0925	Clutch Sleeve	(1)
25.7	36-92-0800	Wobble Drive	(1)
25.8	32-05-5262	Bevel Gear	(1)
25.9	05-74-1030●	M5 x 0.8 T-25 Screw	(2)
25.10	42-36-5261	Bearing Cover	(1)
25.11	02-04-5385	Ball Bearing	(1)
25.12	05-74-1020●	M4 x 0.7 T-15 Screw	(1)
26	31-44-5262	Housing Assembly	(1)
26.1	05-81-5262	M4 x 1.4 Pan Hd. Plast. T-15 Scr.	(8)
26.2	05-81-5265●	M4.5 x 1.5 Pan Hd. T-20 Screw	(4)
26.3	-----	Housing - Right	(1)
26.4	44-60-5265	Pin	(1)
26.5	44-60-5270	Pin	(2)
26.6	-----	Housing - Left	(1)
27	22-64-5262	Power Cord	(1)
28	44-76-0210	Cord Protector	(1)
29	05-78-5313	M4 x 1.3 T-15 Screw	(2)
30	42-68-0601	Cord Clamp	(1)
31	23-66-5262	Switch	(1)
33	42-55-5262	Molded Carrying Case	(1)



To check the static slip values of the clutch you must do the following:

- Position Red spring loaded shifting lever at the hammer with rotation icon.
- Lock motor housing of tool into the jaws of a vise having brass jaws or the equivalent.
- Insert a SDS Plus adaptor* into spindle.
- Insert small flat blade screwdriver into fan to prevent armature from rotating.
- Turn torque wrench clockwise as viewed from the front of the tool until the single slip cycle has been accomplished. Observe the torque reading. Slip clutch a minimum of three times for the most accurate reading.

*SDS Plus Adaptor being used is made by threading a 1/2" x 20 hex nut onto the threads of SDS adaptor No. 48-03-3005.
Note: Apply RED Loctite to threads of hex nut prior to tightening.

Max = 240in/lbs or 20ft/lbs • **Min** = 150in/lbs or 12.5ft/lbs