

PARTS LEGEND

T250-F16, 500970

1	501043	1	T.H.S.C.S. 1/4-20 x 1/2	43	403812	2	Flat Washer
2	500956	1	Cap Diffuser	44	004238	2	Lock Washer
3	501299	6	S.H.C.S. 1/4-20 x 1	45	004224	2	S.H.C.S. - 10-32 x 3/8
4	403582	1	Jam Nut	46	500458	1	Warning Label
5	500958	1	Cap	*47	500772	1	Spring, W.C.E.
6	402717	1	Conical Spring	48	501143	1	Intermediate W.C.E.
7	404230	1	Retaining Ring	49	500766	1	Guide Block
8	404122	1	Upper Valve Piston	50	071297	1	Roll Pin 1/8 x 1-1/8
* 9	091537	1	O-Ring, Main Valve Assembly	51	500840	1	W.C.E. Assembly
10	404054	1	Seal, Main Valve	52	404180	1	Probe Tip
11	404056	1	Lower Valve Piston	53	404698	2	Roll Pin Assembly
* 12	090927	1	O-Ring, Main Valve	54	402730	1	Pivot Pin, front Guide
* 13	092775	1	O-Ring, Main Valve	55	403592	1	Front Guide
* 14	092773	1	O-Ring, Main Valve	56	403591	1	Back Plate
* 15	404256	2	O-Ring, Valve Post, End Plug	57	501023	1	Grip Handle
16	500954	1	Post Main Valve	58	080326	2	S.H.C.S. 10-32 x 1
17	015660	1	S.H.C.S. 10-24 x 1/2	60	500963	1	End Plug
18	501169	1	Piston	61	500955	1	Belt Hook
* 19	405430	1	O-Ring, Piston	62	092037	4	Lock Nut 10-32
20	404274	1	Washer	63	097748	1	Spring, Valve Pin
* 21	403594	1	Driver Blade	64	097746	1	Valve Pin
* 22	402725	1	Seal, Sleeve	* 65	092174	1	O-Ring, Valve Body
23	405243	1	Flange, Sleeve	66	026133	2	Roll Pin, 1/8 x 1
24	500952	1	Sleeve	67	401958	1	Valve Body
* 25	402728	1	O Ring, Sleeve	68	402668	1	Retaining Washer
* 26	091966	1	O Ring, Sleeve	69	501008	1	Lever, Bump Trigger
* 27	500369	1	O-Ring, Sleeve	70	501010	1	Bump Trigger
* 28	500975	1	Gasket, Cap	71	501009	1	Roll Pin
29	501140	1	Logo, Housing L	72	402669	1	Pin, Trigger
30	500957	1	Housing	73	500972	1	Rail Cover Assembly
31	501141	1	Logo, Housing R	74	403713	1	Retaining Ring
32	402708	1	Gasket, Nose Flange	75	500968	1	Rail Assembly
* 33	500950	1	Bumper	76	009397	2	S.H.C.S. 10-24 x 1/2
34	403705	1	Seal, Driver Blade	77	501142	1	Nameplate
35	402706	1	Flange	78	091536	1	Spring, Follower Latch Pin
36	091545	4	S.H.C.S. 1/4-20 x 7/8	79	403711	1	Latch Pin, Follower
37	402629	1	Hardened Washer	80	094295	1	O-Ring
38	405076	1	Spring	81	403710	1	Roller, Negator
39	403716	3	S.H.C.S. 10-32 X 5/16	82	403708	1	Negator Assembly
40	403712	1	Front Guide Latch Assembly	83	403715	1	Follower Assembly
41	501133	1	Rail Bracket Assembly	84	501139	1	Follower Tab
42	401988	1	Spring, Front Guide Latch	85	500973	2	Wear Strip
				86	501039	1	Sequential Trigger

* Denotes Normal Wear Items.

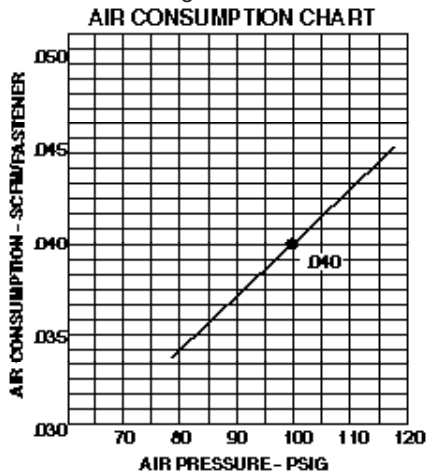
** Make sure Warning Label (500458) is properly affixed.

Replace if necessary.

Label available at no charge through the Service Parts Dept.

▲ Apply Loctite 242 (Blue) Part No. 093500.

→ Denotes New Change



SAFETY INSTRUCTIONS

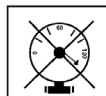
WEAR EYE AND HEARING PROTECTION



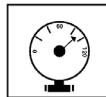
Always wear hearing protection and eye protection devices, including side shields when operating or working in the vicinity of a tool.



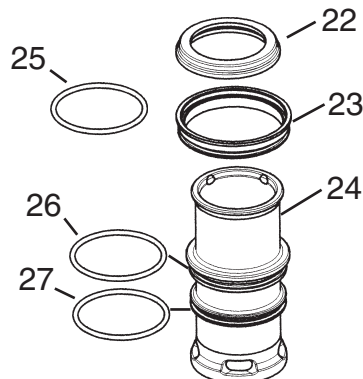
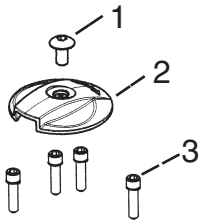
DO NOT EXCEED MAXIMUM RECOMMENDED AIR PRESSURE



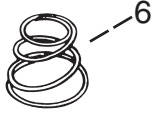
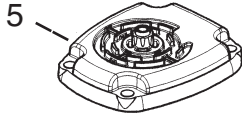
Operate the tool using only the recommended air pressure. Do not exceed the maximum air pressure marked on the tool. Be sure the air pressure gauge is operating properly and check it at least twice a day.



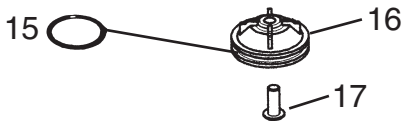
Never use any bottled air or gases such as oxygen to operate the tool since they could cause the tool to explode.



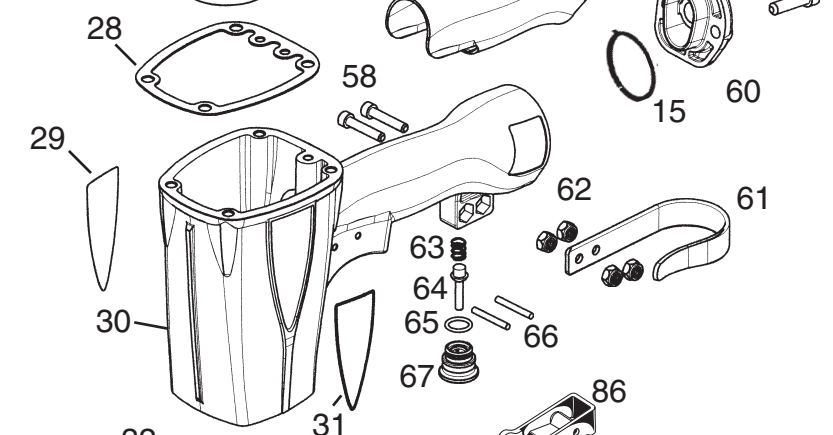
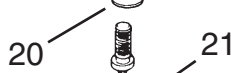
Cap Assembly
#500974



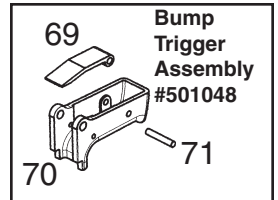
Main Valve
Assembly #404188



Piston Assembly
#501583



OPTIONAL:



Bump
Trigger
Assembly
#501048

⚠ WARNING
All parts must be periodically inspected and replaced if worn or broken. Failure to do this can affect the tool's operation and present a safety hazard.