



SERVICE PARTS LIST

BUL. 54-22-0120

1/3 H.P. BENCH GRINDER

REVISED BUL
6286-1

DATE
May '68

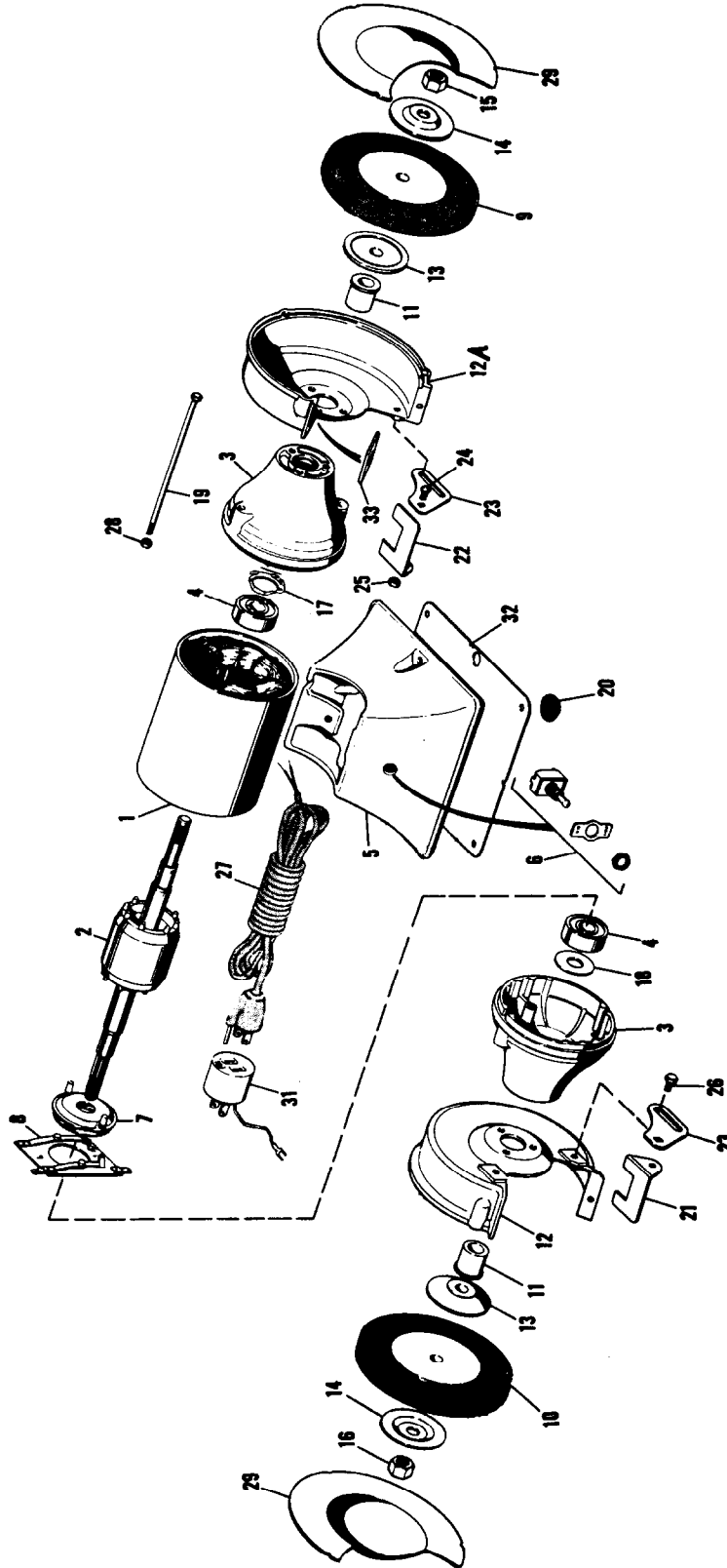
Catalog No. **4920**

MODEL REF. NO. **40134**

WIRING INSTR.

Both Model and Serial No. must be furnished to obtain correct parts.

115 VOLT SINGLE PHASE





SERVICE PARTS LIST

1/3 H.P. BENCH GRINDER

When ordering replacement parts, please give complete motor identification number off name plate of tool.

ILLUSTRATED PARTS

FIG.	PART NO.	DESCRIPTION OF PART	FIG.	PART NO.	DESCRIPTION OF PART	
1	23-58-0261	Stator and Frame	17	40-50-7665	Spring	
2	23-40-0221	Rotor & Shaft	18	45-14-0050	Shim	
★3	45-12-0260	End Shield (Aluminum)	(2)	19	06-75-0056	10-32x7 Cap Screw (2)
4	02-04-5040	Bearing	(2)	20	42-38-0110	Rubber Bumper (4)
5	42-20-0140	Base		21	44-85-0120	L.H. Tool Rest
6	23-66-0630	On-Off Switch		22	44-85-0120	R.H. Tool Rest
7	23-66-0052	Rotating Switch		23	42-36-0320	Tool Rest Support (2)
8	23-66-0390	Stationary Switch			45-36-0270	Tool Rest Spacer (Not Shown) (2)
9		See Catalog		24	06-10-0700	1/4-20x1-3/4 Carriage Bolt (2)
10		See Catalog		25	06-55-1500	1/4-20 Hex Nut (2)
11	45-36-0632	Wheel Locating Sleeve	(2)	26	06-75-0073	1/4-20x3/8 Hex. Hd. Bolt (2)
★12	43-54-0191	L.H. Wheel Guard (Aluminum)		27	22-64-0560	Cord Set
★12a	43-54-0181	R.H. Wheel Guard (Aluminum)		28	06-55-1100	10-32 Hex Nut (2)
13	43-34-0110	Inner Flange	(2)	29	42-92-0210	Wheel Guard Cover (2)
14	43-34-0100	Outer Flange	(2)	31	48-03-0010	Adaptor
15	06-55-3150	1/2-20 R.H. Hex Nut		32	42-92-0120	Base Cover
16	06-55-3175	1/2-20 L.H. Hex Nut		33	45-12-0120	Spark Guard (2)