



# SERVICE PARTS LIST

BULLETIN NO.  
55-06-7010

SPECIFY CATALOG NO. AND SERIAL NO. WHEN ORDERING PARTS		REVISED BULLETIN	DATE
<b>CORDLESS WORKLIGHT</b>			Aug. 2010
CATALOG NO. <b>49-24-0195</b>	STARTING SERIAL NO.	<b>SEE REVERSE SIDE</b>	
	<b>A61A</b>	WIRING INSTRUCTION	

EXAMPLE:  
Component Parts (Small #) Are Included  
When Ordering The Assembly (Large #).

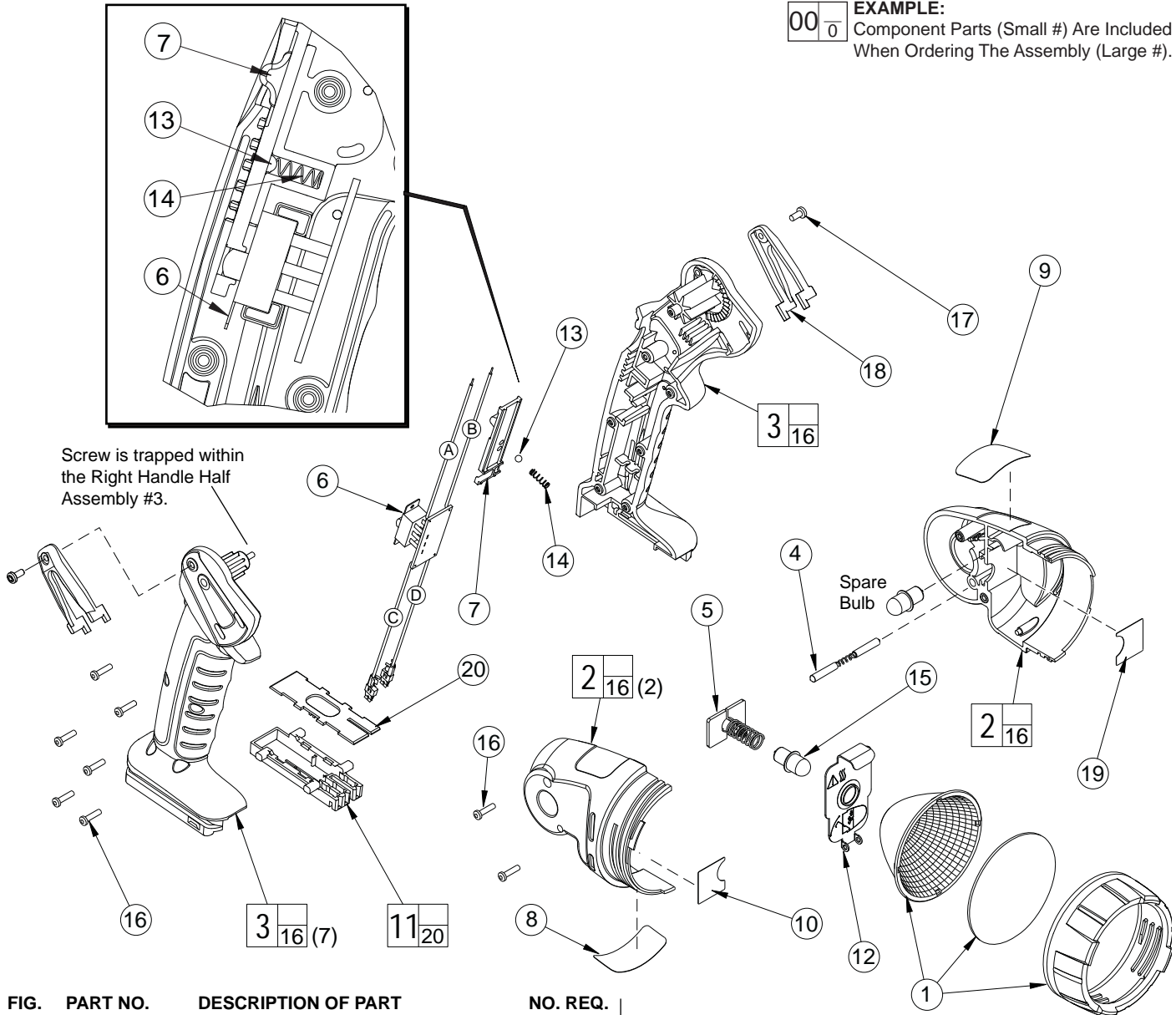
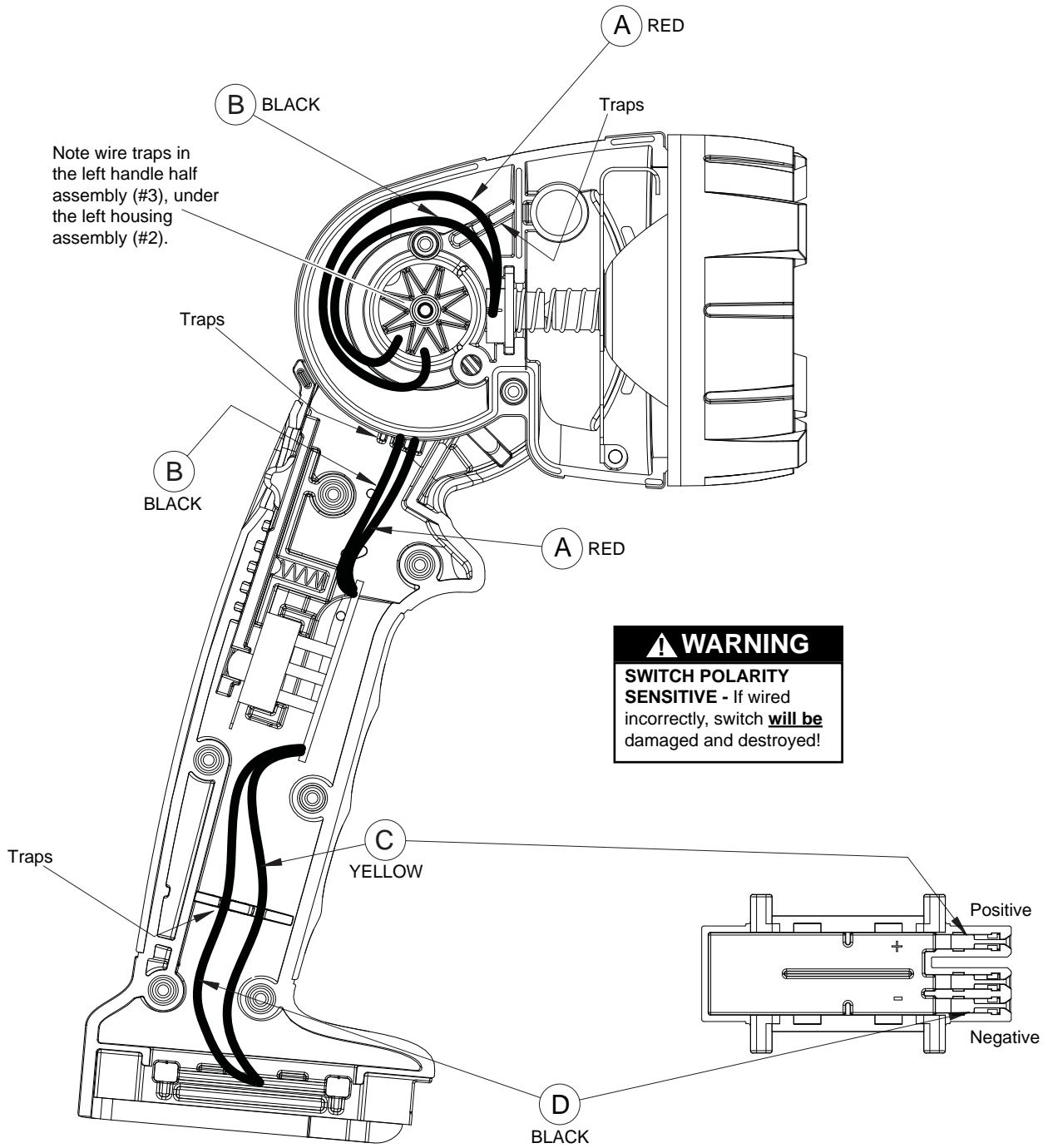


FIG.	PART NO.	DESCRIPTION OF PART	NO. REQ.
	1	Bezel Assembly	(1)
	2	Housing Assembly	(1)
	3	Handle Half Assembly	(1)
	4	Detent Assembly	(1)
	5	Contact Assembly	(1)
	6	Switch Assembly	(1)
	7	Slide Switch	(1)
	8	----- Nameplate	(1)
	9	----- Product Label	(1)
	10	10-15-1055 Warning Label - Bulb	(1)
	11	22-56-1185 Connector Block Assembly	(1)
	12	23-02-0176 Heat Sink Assembly	(1)
	13	02-02-1100 4mm Ball	(1)
	14	40-50-0930 Compression Spring	(1)
	15	49-81-0040 28 Volt Lightbulb (Pkg. of 2)	(1)
	16	06-82-7225 #4-20 x .50 Plastite T-20 Screw	(8)
	17	06-82-5275 6-32 x 5/16" Pan Hd. T-15 Screw	(2)
	18	43-72-0300 Belt Clip Holder	(2)
	19	10-15-1060 Warning Label	(1)
	20	----- Connector Block Cover	(1)

**⚠ WARNING**  
**SWITCH POLARITY SENSITIVE**  
If wired incorrectly, switch **will be**  
damaged and destroyed!  
**See reverse side of bulletin for**  
**switch wiring detail.**

**FIG. NOTES:**  
11,20 Concave side of connector block cover to face connector block.  
15 The use of a soft cloth is recommended when installing lightbulbs. Direct contact with oils or other contamination can shorten the life of lightbulbs.

**MILWAUKEE ELECTRIC TOOL CORPORATION**  
13135 W. LISBON RD., BROOKFIELD, WI 53005  
Drwg. 3



WIRING SPECIFICATIONS				
Wire	Wire Color	Origin or Gauge	Length	Terminals, Connectors and 1 or 2 End Wire Preparation
A	Red	-----	-----	Component of the Circuit Board Assy. 22-09-1455.
B	Black	-----	-----	Component of the Circuit Board Assy. 22-09-1455.
C	Yellow	-----	-----	Component of the Circuit Board Assy. 22-09-1455.
D	Black	-----	-----	Component of the Circuit Board Assy. 22-09-1455.

**BULK LEAD WIRE - BULLETIN NO. 58-01-0003**

TERMINAL DESCRIP-		
Code	Part No.	Qty.