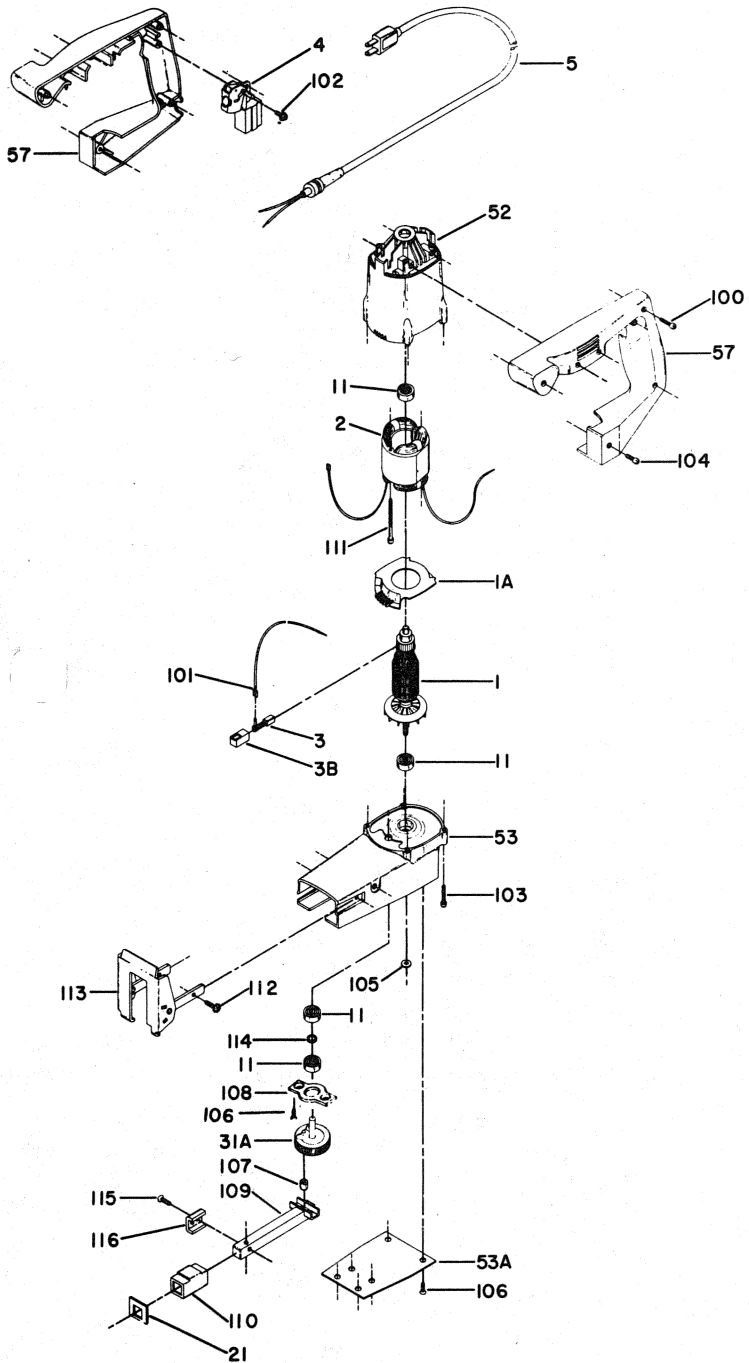


PORTER-CABLE
ALL-PURPOSE SAW

4391



Ref. No.	Part No.	Description
1	690849	Armature
1A	687698	Air Baffle
2	690850	Field
3	688152	Brush
3B	852874	Brush Holder
4	690648	Switch
5	852894	Cord
11	855284**	Bearing
21	689881	Felt Seal
31A	690695	Gear Assembly
52	686504	Motor Housing
53	690753	Gear Housing
53A	688977	Gear Housing Cvr
57	690694	Handle Set
		Incl: Ref. 100 & 104
100	856480	Screw
101	690320	Lead Assembly
102	866784	Screw
103	860573	Screw
104	851011	Screw
105	680791	Slinger
106	848211	Screw
107	688862	Roller
108	691046	Retainer
109	688934	Blade Holder Assy (T1)
n	691313	Blade Holder (T2)
110	688866	Bearing
111	687700	Screw
112	843059	Screw
113	688935	Front Shoe
114	691083	Spacer
115	689720	Screw
116	689721	Clamp (T1)
n	691312	Clamp (T2)
*	48230	Lubricant

** SEE SERVICE NOTES

WARNING! Electrical repairs should only be attempted by trained repairmen. Contact the nearest Porter-Cable Service Center or other competent repair center.

SERVICE NOTES

4391

FAN END BEARING

Locate Fan end Bearing $1 \frac{1}{16}$ from end of Armature Shaft.