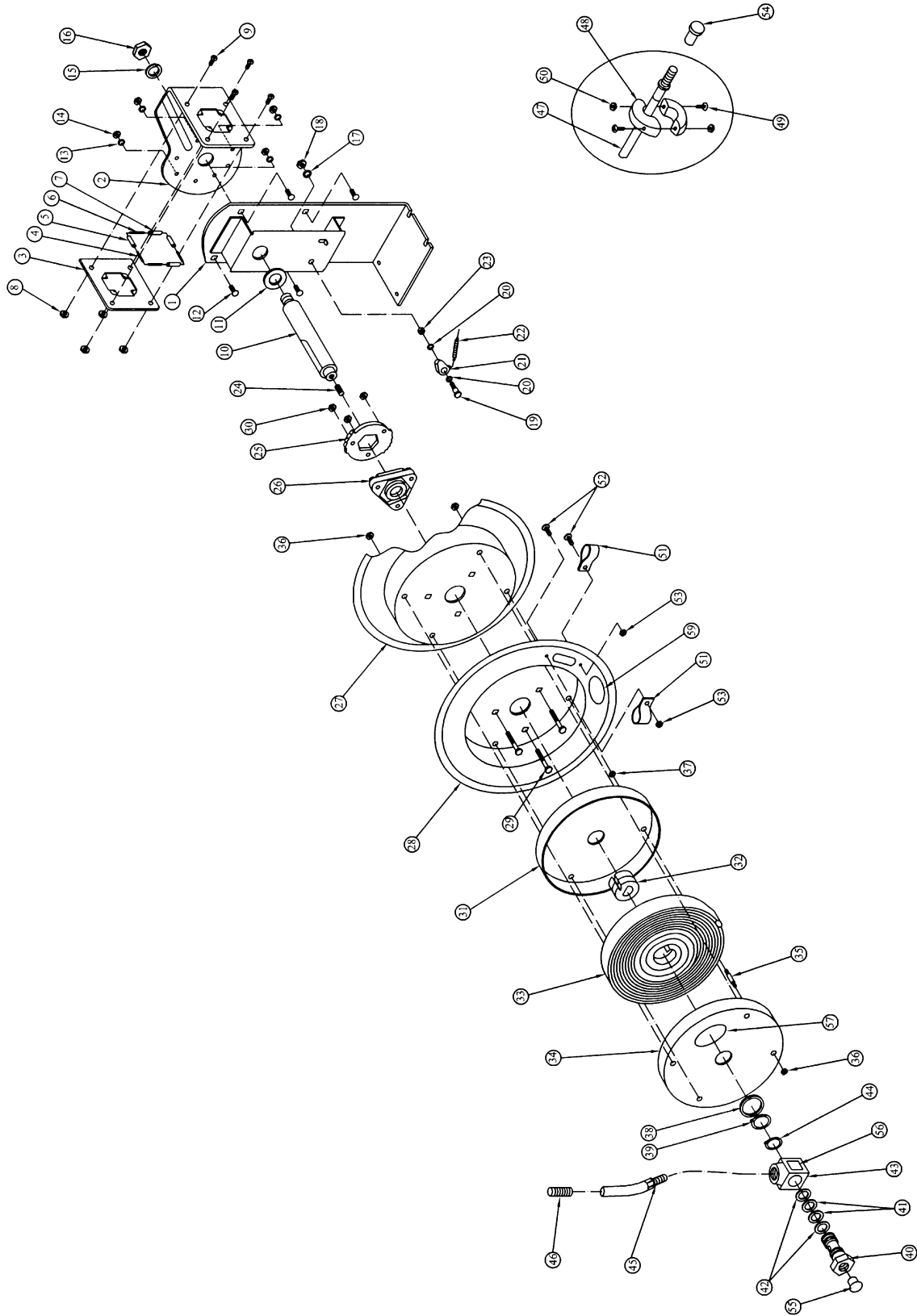


# Parts Breakdown for JET AHR-50



## Parts List for the AHR-50

Index No.	Part No.	Description	Size	Qty.
1	AHR50-1	Base		1
2	AHR50-2	Support Plate		1
3	AHR50-3	Guide Plate		1
4	AHR50-4	Roller Axle (long)		2
5	AHR50-5	Roller (long)		2
6	AHR50-6	Roller Axle (short)		2
7	AHR50-7	Roller (short)		2
8	AHR50-8	Nyloc Nut **	M5	4
9	AHR50-9	Pan Head Machine Screw **	M5x10	4
10	AHR50-10	Shaft		1
11	AHR50-11	Washer **		1
12	AHR50-12	Carriage Bolt **	M8x20	4
13	AHR50-13	Lock Washer **	M8	4
14	AHR50-14	Nyloc Nut **	M8	4
15	AHR50-15	Lock Washer **	M16	1
16	AHR50-16	Hex Nut **	M16	1
17	AHR50-17	Lock Washer **	M10	1
18	AHR50-18	Hex Nut **	M10	1
19	AHR50-19	Bolt	M10x43	1
20	AHR50-20	Bushing	Ø13xØ19x1.6	2
21	AHR50-21	Locking Cam		1
22	AHR50-22	Dog Spring		1
23	AHR50-23	Bushing **	Ø13xØ19x10	1
24	AHR50-24	Screw **	M10x30	1
25	AHR50-25	Locking Ring		1
26	AHR50-26	Assembly Hub Bearing		1
27	AHR50-27	Drum		1
28	AHR50-28	Drum		1
29	AHR50-29	Bolt **	M6x37	3
30	AHR50-30	Nyloc Nut **	M6	3
31		Spring Drum		1
	AHR50-31A	Spring Drum Assembly (includes: 31, 32, 33, 34, 35, 36, 37, 57)		1
32		Spring Core		1
33		Spring		1
34		Spring Drum		1
35		Bolt	M6x56	4
36	AHR50-36	Nyloc Nut **	M6	8
37	AHR50-37	Nut **	M6	4
38	AHR50-38	Washer **	Ø19.5xØ40x2	1
39	AHR50-39	Retaining Ring **	19	1
40	AHR50-40	Swivel Spool		1
41	AHR50-41	O-Ring	ASM568-210	2
42	AHR50-42	Retainer	8-210	2
43	AHR50-43	Swivel Body		1
	AHR50-43A	Swivel Assembly (includes: 38, 39, 40, 41, 42, 43, 44, 56)		1
44	AHR50-44	Retaining Ring **	25	1
45	AHR50-45	Fitting		2
46	AHR50-46	Hose Protection Spring		1
47	AHR50-47	Replacement Air Hose	3/8" x 50'	1
48	AHR50-48	Hose Stop		2
49	AHR50-49	Pan Head Machine Screw **	M6x40	2
50	AHR50-50	Hex Nut **	M6	2
51	AHR50-51	Clamp		2
52	AHR50-52	Pan Head Machine Screw **	M5x12	2

Index No.	Part No.	Description	Size	Qty.
53	AHR50-53	Nyloc Nut **	M5	2
54	AHR50-54	Plastic Cover		1
55	AHR50-55	Plastic Plug		1
56	AHR50-56	Swivel Label *		1
57	AHR50-57	Spring Drum Label *		1
59	AHR50-59	Arrow Label *		1
	AHR50-ID	JET I.D. Label (not shown)		1
	AHR50-LK	*Label Kit (includes: 56, 57, 59)		
	AHR50-HK	**Hardware Kit (includes: 8, 9, 11, 12, 13, 14, 15, 16, 17, 18, 23, 24, 29, 30, 36, 37, 38, 39, 44, 49, 50, 52, 53)		