



SERVICE PARTS LIST

BUL. 54-46-2150

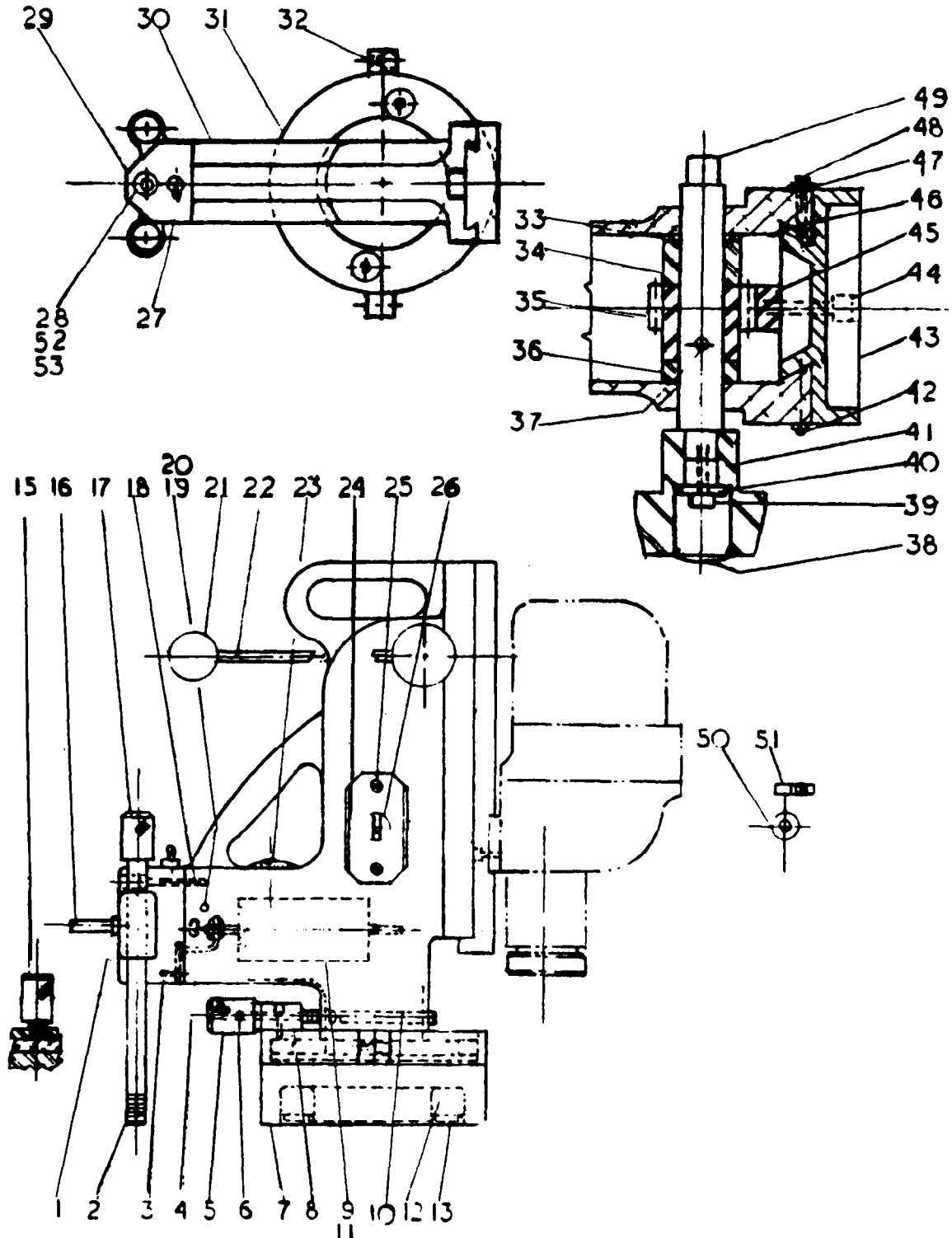
ELECTROMAGNETIC DRILL STAND

REVISED BUL	DATE
6297-1	Feb. '68
WIRING INSTR.	

Catalog No. 4230

Starting Serial No. 297-1001

Both Model and Serial No. must be furnished to obtain correct parts.



PARTS FOR 4230

ILLUSTRATED PARTS						
FIG.	PART NO.	DESCRIPTION OF PART	FIG.	PART NO.	DESCRIPTION OF PART	
1	22-38-0080	Cord Clamp		26	23-66-0340	Switch
2	45-04-0300	Balance Screw	(2)	27	23-66-0420	Switch
3	06-81-2800	10-32x3/8" Flt. Hd. Screw		28	23-26-0020	Pilot Lamp
4	42-36-0350	Bracket		29	28-12-0101	Cap
5	43-98-0140	Micro Knob		30	28-50-7821	Support Housing
6	06-65-1550	1/8" Dia. x 1" Dowel	(3)	31	28-82-0101	Split Ring
7	30-07-5361	Base		32	06-75-2950	1/4-20x1/2" Soc. Hd. Screw
8	42-28-0120	Support Block		33	45-88-0410	Spring Washer
9	23-38-2510	Rectifier (115 Volt)		34	45-36-0320	Spacer
	23-38-2530	Rectifier (230 Volt)		35	32-60-1001	Pinion Gear
10	45-04-0310	Micro Screw		36	43-36-0300	Spacer
11	06-55-1100	10-32 Hex Nut	(2)	37	06-65-1650	1/4" Dia. x 1-1/4" Roll Pin
12	22-51-0160	Coil (115 Volt)		38	44-68-0110	Plug
	22-51-0170	Coil (230 Volt)		39	06-75-3200	1/4-20x1-1/4" Soc. Hd. Screw
13	45-12-0160	Coil Shield		40	45-88-0420	Washer
15	45-04-0320	Lock Screw	(2)	41	43-78-0100	Hub
16	22-64-0330	Cord Set		42	43-33-0150	Grease Ftg.
17	43-98-0120	Balance Screw Knob	(2)	43	30-84-0141	Slide
18	06-75-3250	1/4-20x1-1/2" Soc. Hd. Screw	(4)	44	06-75-3100	1/4-20x1" Soc. Hd. Screw
19	23-38-5010	Resistor		45	44-80-0120	Rack
20	22-33-0160	Capacitor		46	43-48-0060	Adjusting Gib
21	43-98-0050	Knob	(4)	47	06-55-1100	10-32 Hex Nut
22	43-62-0280	Feed Handle	(4)	48	06-83-2520	10-32x1" Set Screw
23	45-83-0050	Vent	(2)	49	45-08-0050	Shaft
24	28-72-7001	Switch Plate		50	22-90-0100	Grommet
25	06-81-4650	10-32x3/8" Rd. Hd. Screw	(3)	51	42-70-0120	Clip
				52	22-26-0030	Bulb
				53	23-28-0050	Lens

MISCELLANEOUS PARTS NOT SHOWN

12-17-3000 Name Plate

Numbers in brackets indicate number required.