



SERVICE PARTS LIST

BUL. 54-46-2101

ELECTROMAGNETIC DRILL STAND

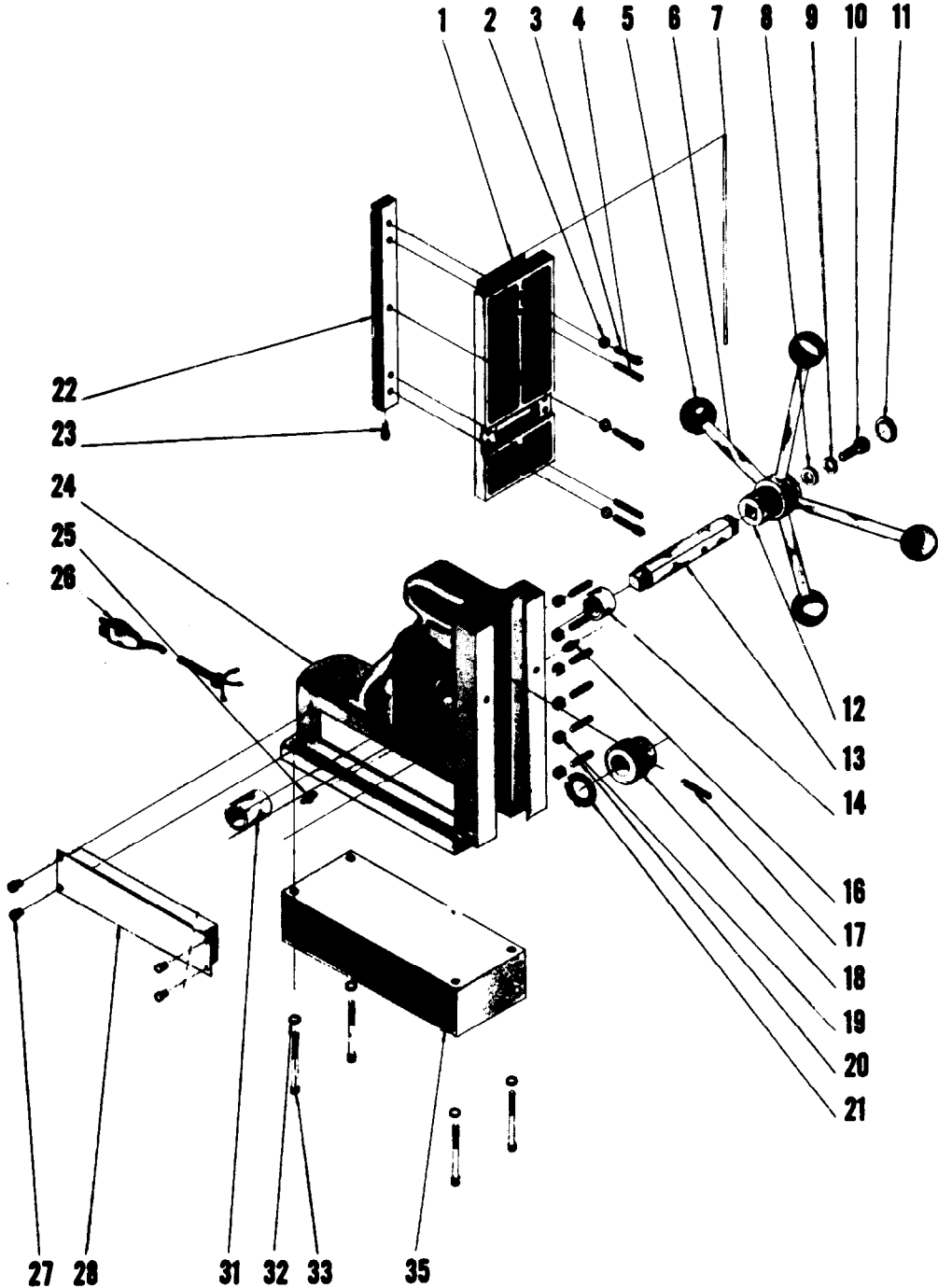
REVISED BUL 6296-2 DATE Feb. '68

Catalog No. 4220

Starting Serial No. 296-1135

WIRING INSTR.

Both Model and Serial No. must be furnished to obtain correct parts.





SERVICE PARTS LIST

ELECTROMAGNETIC STAND

ILLUSTRATED PARTS

FIG.	PART NO.	DESCRIPTION OF PART	FIG.	PART NO.	DESCRIPTION OF PART
1	30-84-0141	Slide	18	32-60-1001	Pinion Gear
2	06-97-4050	1/4 Lock Washer (3)	19	06-55-1100	10-32 Hex Nut (6)
3	06-75-3050	1/4-20x3/4 Socket Hd. Sc. (3)	20	06-83-2520	10-32x1 Set Screw (6)
4	06-65-1650	1/4x1-1/4 Roll Pin (2)	21	45-88-0410	Spring Washer
5	43-98-0050	Plastic Knob (4)	22	44-80-0120	Rack
6	43-62-0280	Feed Handle (4)	23	06-75-3150	1/4-20x1 Socket Adj. Screw
7	43-48-0060	Gib	24	28-50-7881	Support Housing
8	45-88-0420	3/4 O.D.x9/32I.D.x1/8 Washer	25	43-33-0150	Grease Fitting
9	06-97-4050	1/4 Lock Washer	26	22-64-0330	Card Set
10	06-75-3150	1/4-20x1 Socket Hd. Sc.	27	06-81-5790	6-32x1/4 Fil. Hd. Sc. (4)
11	44-68-0110	Plug	28	23-35-0050	Power Panel Assy.
12	43-78-0100	Hub	31	42-40-0360	Bushing
13	45-08-0050	Shaft	32	06-97-4050	1/4 Lock Washer (4)
14	42-40-0340	Bushing	33	06-75-3405	1/4-20x2-1/4 Socket Hd. Sc. (4)
16	43-33-0150	Grease Fitting	35	42-20-0210	Magnetic Base
17	06-65-1650	1/4x1-1/4 Roll Pin			

MISCELLANEOUS PARTS NOT SHOWN

PART NO.	DESCRIPTION OF PART	PART NO.	DESCRIPTION OF PART
22-38-0100	Cable Clamp	06-81-2400	10-32x5/8 Fil.Hd. Cable Clamp Sems
12-98-5500	Name Plate	06-81-8400	4-40x1/4 Fil.Hd. Name Plate Sem (2)