



# SERVICE PARTS LIST

BUL. 54-46-2001

## ELECTROMAGNETIC DRILL STAND

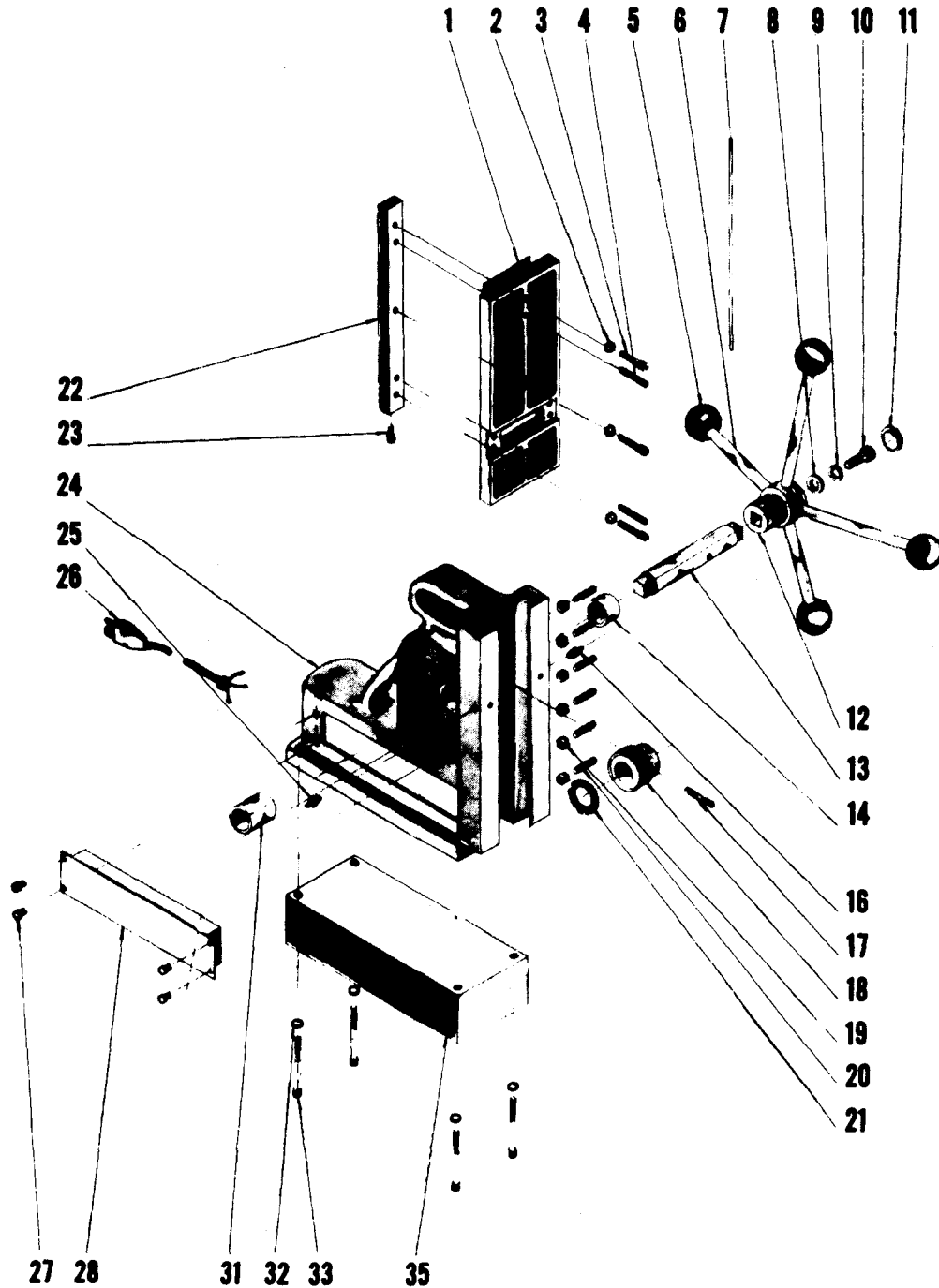
REVISED BUL 6302-2	DATE Feb. '68
-----------------------	------------------

Catalog No. 4200

Starting Serial No. 302-1150

WIRING INSTR.

Both Model and Serial No. must be furnished to obtain correct parts.





# SERVICE PARTS LIST

## ELECTROMAGNETIC STAND

### ILLUSTRATED PARTS

FIG.	PART NO.	DESCRIPTION OF PART	FIG.	PART NO.	DESCRIPTION OF PART
1	30-84-0101	Slide	18	32-60-1001	Pinion Gear
2	06-97-4050	1/4 Lock Washer	19	06-55-1100	10-32 Hex Nut (6)
3	06-75-3050	1/4-20x3/4 Socket Hd. Sc.	20	06-83-2520	10-32x1 Set Screw (6)
4	06-65-1650	1/4x1-1/4 Roll Pin	21	45-88-0410	Spring Washer
5	43-98-0050	Plastic Knob	22	44-80-0110	Rack
6	43-62-0270	Feed Handle	23	06-75-3150	1/4-20x1 Socket Adj. Screw
7	43-48-0050	Gib	24	28-50-7861	Support Housing
8	45-88-0420	3/4 O.D.x9/32I.D.x1/8 Washer	25	43-33-0150	Grease Fitting
9	06-97-4050	1/4 Lock Washer	26	22-64-0330	Cord Set
10	06-75-3150	1/4-20x1 Socket Hd. Sc.	27	06-81-5790	6-32x1/4 Fil. Hd. Sc. (4)
11	44-68-0110	Plug	28	23-35-0060	Power Panel Assy.
12	43-78-0100	Hub	31	42-40-0350	Bushing
13	45-08-0050	Shaft	32	06-97-4050	1/4 Lock Washer (4)
14	42-40-0330	Bushing	33	06-75-3405	1/4-20x2-1/4 Socket Hd. Sc. (4)
16	43-33-0150	Grease Fitting	35	42-20-0190	Magnetic Base
17	06-65-1650	1/4x1-1/4 Roll Pin			

### MISCELLANEOUS PARTS NOT SHOWN

PART NO.	DESCRIPTION OF PART	PART NO.	DESCRIPTION OF PART
22-38-0100	Cable Clamp	06-81-2400	10-32x5/8 Fil.Hd. Cable Clamp Sems
12-98-5700	Name Plate	06-81-8400	4-40x1/4 Fil.Hd. Name Plate Sem (2)