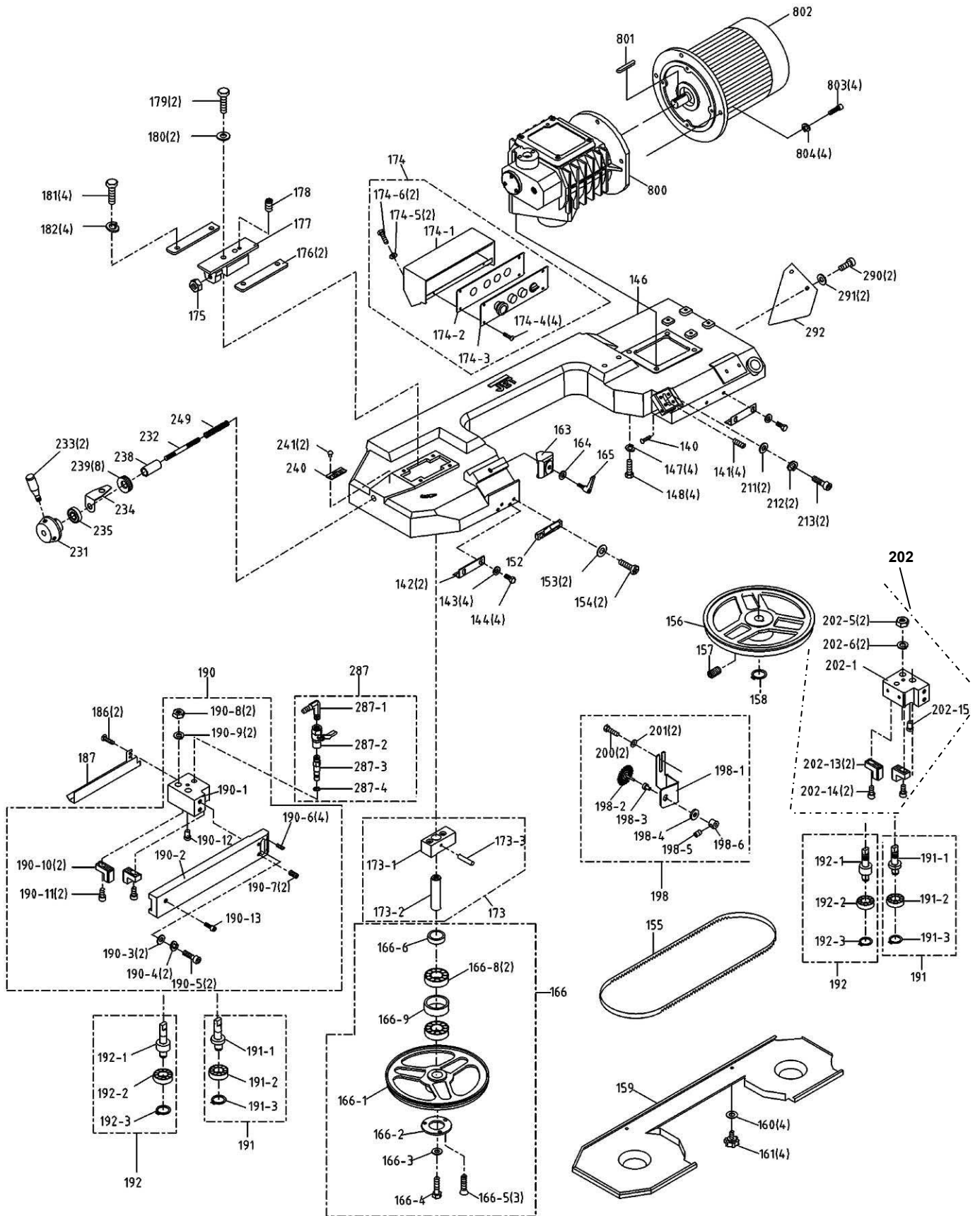


Bow Assembly



Parts List: HBS-814GH Band Saw

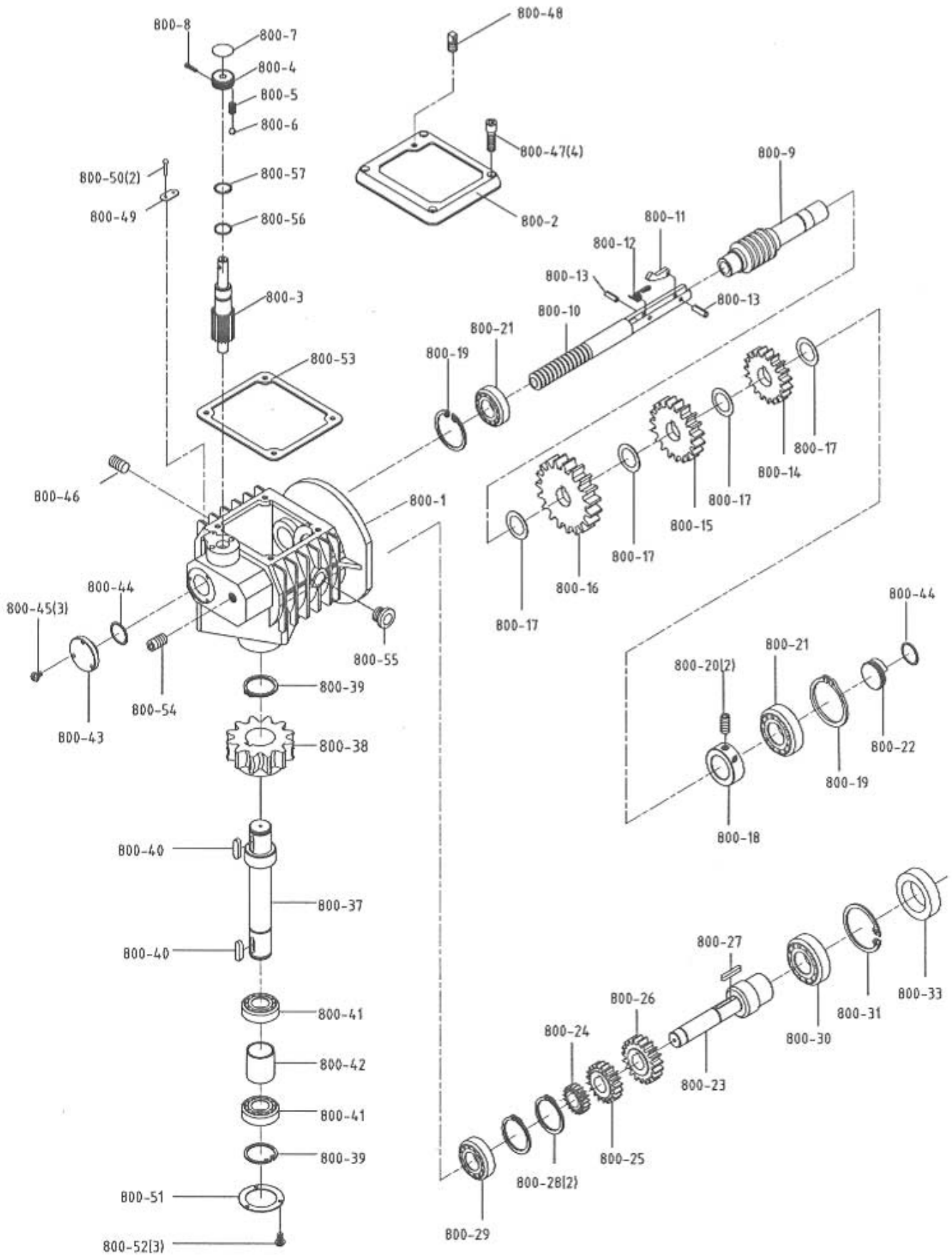
| Index No. | Part No. | Description | Size | Qty |
|-----------|----------------|---------------------------------|-------------------|-----|
| 1 | HBS814GH-001 | Base | | 1 |
| 2 | HBS814GH-002 | Stand Complete Assembly | | 1 |
| 2-1 | HBS814GH-002-1 | Coolant Pan | | 1 |
| 2-2 | HBS814GH-002-2 | Leg (Right) | | 1 |
| 2-3 | HBS814GH-002-3 | Leg (Left) | | 1 |
| 2-4 | HBS814GH-002-4 | Panel | | 1 |
| 3 | HBS814GH-003 | Vise Jaw Bracket (Front) | | 1 |
| 4 | HBS814GH-4 | Washer | 10 x 25 x 2 | 2 |
| 5 | HBS814GH-005 | Carriage Bolt | 1/2"-12 x 2" | 1 |
| 6 | TS-0209071 | Socket Head Cap Screw | 3/8"-16 x 1-1/2"L | 1 |
| 7 | 6290483 | Hex Nut | 1/2"-12 | 1 |
| 8 | HBS814GH-063 | Washer | 12 x 28 x 2 | 2 |
| 9 | HBS814GH-009 | Hex Cap Screw | 1/2"-12 x 2"L | 1 |
| 10 | HBS814GH-010 | Vise Jaw Bracket (Rear) | | 1 |
| 11 | HBS814GH-011 | Miter Clamp Bolt | | 1 |
| 13 | HBS814GH-013 | Handle | | 1 |
| 14 | HBS814GH-014 | Crank | | 1 |
| 15 | HBS814GH-015 | Washer | 12 x 23 x 2 | 1 |
| 16 | HBS814GH-016 | Thrust Flange | | 1 |
| 17 | TS-0267051 | Socket Set Screw | 1/4"-20 x 1/2"L | 1 |
| 18 | HBS814GH-018 | Acme Nut | | 1 |
| 19 | HBS814GH-019 | Acme Screw | | 1 |
| 20 | HBS814GH-020 | Pin | 5 x 34L | 2 |
| 21 | HBS814GH-021 | Vise Cam | | 1 |
| 22 | TS-0051021 | Hex Cap Screw | 5/16"-18 x 5/8"L | 2 |
| 23 | HBS814GH-023 | Washer | 8 x 25 x 3 | 2 |
| 24 | HBS814GH-024 | Shipping Bracket | | 1 |
| 25 | TS-0060081 | Hex Cap Screw | 3/8"-16 x 1-3/4" | 1 |
| 26 | TS-0060091 | Hex Cap Screw | 3/8"-16 x 2" | 1 |
| 27 | HBS814GH-285 | Washer | 10 x 20 x 2 | 1 |
| 28 | TS-0561031 | Hex Nut | 3/8"-16 | 2 |
| 29 | HBS814GH-029 | Knob | | 1 |
| 30 | HBS814GH-030 | Shaft | | 1 |
| 37 | HBS814GH-037 | Fiber washer | | 8 |
| 40 | HBS814GH-040 | Cover | | 1 |
| 41 | TS-081C022 | Phillips Pan Head Machine Screw | #10-24 x 3/8"L | 2 |
| 50 | HBS814GH-050 | Stop Block | | 1 |
| 51 | HBS814GH-051 | Thumb Screw | | 1 |
| 52 | HBS814GH-052 | Stock Stop Rod | | 1 |
| 53 | TS-0051031 | Hex Cap Screw | 5/16"-18 x 3/4"L | 1 |
| 54 | TS-0267061 | Socket Set Screw | 1/4"-20 x 5/8"L | 1 |
| 55 | HBS814GH-055 | Cylinder Lower Support | | 1 |
| 56 | TS-0060061 | Hex Cap Screw | 3/8"-16 x 1-1/4"L | 2 |
| 57 | HBS814GH-285 | Washer | 10 x 20 x 2 | 2 |
| 58 | HBS814GH-058 | Bearing | | 1 |
| 59 | HBS814GH-059 | Washer | | 1 |
| 60 | HBS814GH-060 | Spring | | 1 |
| 61 | HBS814GH-061 | Pivot Shaft | | 1 |
| 62 | HBS814GH-062 | Bushing | | 1 |
| 63 | HBS814GH-063 | Washer | 12 x 28 x 2 | 2 |
| 64 | 6290483 | Hex Nut | 1/2"-12 | 2 |
| 69 | HBS814GH-069 | Bracket | | 1 |
| 70 | TS-0060031 | Hex Cap Screw | 3/8"-16 x 3/4"L | 1 |
| 71 | HBS814GH-071 | Washer | 10 x 25 x 3 | 1 |
| 76 | HBS814GH-076 | Screen | | 1 |
| 77 | TS-0050011 | Hex Cap Screw | 1/4"-20 x 1/2"L | 1 |
| 81 | TS-081C022 | Phillips Pan Head Machine Screw | #10-24 x 3/8"L | 2 |

| | | | | |
|-------|----------------|---------------------------------|-------------------------------|---|
| 82 | TS-069204 | Flat Washer | #10 | 2 |
| 83 | HBS814GH-083 | Scale | | 1 |
| 84 | HBS814GH-084 | Spring | | 1 |
| 85 | HBS814GH-085 | Spring Adjusting Screw | | 1 |
| 86 | TS-0051031 | Hex Cap Screw | 5/16"-18 x 3/4"L | 1 |
| 87 | HBS814GH-087 | Washer | 8 x 23 x 2 | 1 |
| 88 | HBS814GH-088 | Spring Handle Bracket | | 1 |
| 89 | HBS814GH-092 | Washer | 10 x 23 x 2 | 1 |
| 90 | TS-0561031 | Hex Nut | 3/8-16 | 1 |
| 92 | HBS814GH-092 | Washer | 10 x 23 x 2 | 3 |
| 93 | TS-0209061 | Socket Head Cap Screw | 3/8"-16 x 1-1/4"L | 3 |
| 96 | HBS814GH-096 | Rear Pivot Bracket | | 1 |
| 98 | TS-0267051 | Socket Set Screw | 1/4"-20 x 1/2"L | 1 |
| 99 | HBS814GH-099 | Cylinder Upper Support | | 1 |
| 100 | HBS814GH-100 | Shaft | | 1 |
| 101 | TS-0060051 | Hex Cap Screw | 3/8"-16 x 1"L | 2 |
| 102 | HBS814GH-4 | Washer | 10 x 25 x 2 | 2 |
| 103 | HBS814GH-103 | Cylinder Complete Set | | 1 |
| 105 | HBS814GH-105 | Cross Round Head Screw | 1/4"-20 x 5/8"L | 4 |
| 106 | HBS814GH-106 | Washer | 6.3 x 19 x 1.5 | 4 |
| 107 | HBS814GH-107 | Pump | 1/8HP, 110/220V, 1PH | 1 |
| 108 | HBS814GH-108 | Close Nipple | 3/8"PT | 1 |
| 109 | HBS814GH-109 | Hose | OD12 x ID8 x 2000 | 1 |
| 110 | HBS814GH-110 | Hose Clip | 5/8" | 3 |
| 111 | TS-081C022 | Phillips Pan Head Machine Screw | #10-24 x 3/8"L | 3 |
| 113 | HBS814GH-092 | Washer | 10 x 23 x 2 | 2 |
| 114 | TS-0209031 | Socket Head Cap Screw | 3/8"-16 x 3/4"L | 2 |
| 118 | HBS814GH-118 | Hose | OD16 x ID13 x 260 | 1 |
| 119 | HBS814GH-119 | Coolant Tank | | 1 |
| 126 | HBS814GH-126 | Washer | 5/8" x 40 x 3" | 4 |
| 127 | HBS814GH-127 | Wheel | | 2 |
| 128 | 5519932 | Cotter Pin | 3 x 25L | 2 |
| 129 | HBS814GH-129 | Wheel Rod | | 1 |
| 133 | 6290483 | Hex Nut | 1/2"-12 | 2 |
| 134 | HBS814GH-134 | Coaster of Stand | 1/2" | 2 |
| 137 | TS-0680041 | Washer | 3/8" | 8 |
| 138 | TS-0060051 | Hex Cap Screw | 3/8"-16 x 1"L | 8 |
| 139 | HBS814GH-139 | Handle | | 1 |
| 140 | HBS814GH-140 | Flat Cross Head Screw | M5-0.8 x 12L | 1 |
| 141 | TS-1523051 | Socket Set Screw | M6-1 x 15L | 4 |
| 142 | HBS814GH-142 | Door Clip Lower | | 2 |
| 143 | HBS814GH-143 | Washer | 6.3 x 16 x 1.5 | 4 |
| 144 | TS-0050011 | Hex Cap Screw | 1/4"-20 x 1/2"L | 4 |
| 146 | HBS814GH-146 | Body Frame | | 1 |
| 147 | TS-0720091 | Lock Washer | 3/8" | 4 |
| 148 | TS-0060061 | Hex Cap Screw | 3/8"-16 x 1-1/4"L | 4 |
| 152 | HBS814GH-152 | Upper Bracket hold down | | 1 |
| 153 | HBS814GH-285 | Washer | 10 x 20 x 2 | 2 |
| 154 | TS-0060051 | Hex Cap Screw | 3/8"-16 x 1" | 2 |
| 155 | HBS814GH-155 | Blade | 0.032" x 3/4" x 2464L x 5-8T" | 1 |
| 156 | HBS814GH-156 | Drive Wheel | | 1 |
| 157 | TS-0267051 | Socket Set Screw | 1/4"-20 x 1/2"L | 1 |
| 158 | 5519933 | C-Retainer Ring | S25 | 1 |
| 159 | HBS814GH-159 | Blade Back Cover | | 1 |
| 160 | HBS814GH-143 | Washer | 6.3 x 16 x 1.5 | 4 |
| 161 | HBS814GH-161 | Knob | | 4 |
| 163 | HBS814GH-163 | Clamp Block Guide Arm | | 1 |
| 164 | TS-1550071 | Flat Washer | M10 | 1 |
| 165 | HBS814GH-165 | Grip | M10-1.5 x 52L | 1 |
| 166 | HBS814GH-166 | Idler Wheel Assembly | | 1 |
| 166-1 | HBS814GH-166-1 | Idler Wheel | | 1 |

| | | | | |
|--------|-----------------|---------------------------------|--------------------|---|
| 166-2 | HBS814GH-166-2 | Bearing Cover | | 1 |
| 166-3 | HBS814GH-211 | Washer | 8 x 18 x 1.5 | 1 |
| 166-4 | TS-0051031 | Hex Cap Screw | 5/16"-18 x 3/4"L | 1 |
| 166-5 | HBS814GH-166-5 | Phillips Flat Head Screw | #10-24 x 3/8"L | 3 |
| 166-6 | HBS814GH-166-6 | Bushing | | 1 |
| 166-8 | BB-6202ZZ | Bearing | 6202ZZ | 2 |
| 166-9 | HBS814GH-166-9 | Bushing | | 1 |
| 173 | HBS814GH-173 | Shaft Assembly | | 1 |
| 173-1 | HBS814GH-173-1 | Sliding Plate Draw Block | | 1 |
| 173-2 | HBS814GH-173-2 | Blade Wheel Shaft | | 1 |
| 173-3 | HBS814GH-173-3 | Pin | 4 x 22L | 1 |
| 174 | HBS814GH-174 | Control Box Assembly | | 1 |
| 174-1 | HBS814GH-174-1 | Control Box | | 1 |
| 174-2 | HBS814GH-174-2 | Control Plate | | 1 |
| 174-3 | HBS814GH-174-3 | Label for Name Plate | | 1 |
| 174-4 | TS-1533042 | Phillips Pan Head Machine Screw | M5-0.8P*12L | 4 |
| 174-5 | TS-1550041 | Flat Washer | M6 | 2 |
| 174-6 | TS-1482031 | Hex Cap Screw | M6-1.0 x 15L | 2 |
| 175 | TS-0561031 | Hex Nut | 3/8-16 | 1 |
| 176 | HBS814GH-176 | Sliding Plate | | 2 |
| 177 | HBS814GH-177 | Blade Tension Slide Block | | 1 |
| 178 | TS-0270071 | Socket Set Screw | 5/16"-18 x 3/4"L | 1 |
| 179 | TS-0051071 | Hex Cap Screw | 5/16"-18 x 1-1/2"L | 2 |
| 180 | HBS814GH-180 | Washer | 8 x 12 x 2 | 2 |
| 181 | TS-0051031 | Hex Cap Screw | 5/16"-18 x 3/4"L | 4 |
| 182 | TS-0720081 | Lock Washer | 5/16" | 4 |
| 186 | HBS814GH-200 | Phillips Pan Head Machine Screw | 1/4"-20 x 3/8"L | 1 |
| 187 | HBS814GH-187 | Blade Guard | | 1 |
| 190 | HBS814GH-190 | Blade Guide Assembly | | 1 |
| 190-1 | HBS814GH-190-1 | Blade Guide | | 1 |
| 190-2 | HBS814GH-190-2 | Adjustable Bracket (Front) | | 1 |
| 190-3 | HBS814GH-211 | Washer | 8 x 18 x 1.5 | 2 |
| 190-4 | TS-0720081 | Lock Washer | 5/16" | 2 |
| 190-5 | TS-0208071 | Socket Head Cap Screw | 5/16"-18 x 1-1/4"L | 2 |
| 190-6 | TS-1523031 | Socket Set Screw | M6-1P*10L | 2 |
| 190-7 | TS-1503041 | Socket Head Cap Screw | M6-1 x 15L | 2 |
| 190-8 | TS-1540071 | Hex Nut | M10-1.5 x P1 | 2 |
| 190-9 | TS-2361101 | Lock Washer | M10 | 2 |
| 190-10 | HBS814GH-190-10 | Carbide Guide | | 2 |
| 190-11 | TS-0207041 | Socket Head Cap Screw | 1/4"-20 x 3/4"L | 2 |
| 190-12 | HBS814GH-190-12 | Top Guide Left | | 1 |
| 190-13 | TS-1503021 | Socket Head Cap Screw | M6-1 x 10 | 1 |
| 191 | HBS814GH-191 | Eccentric shaft Assembly | | 2 |
| 191-1 | HBS814GH-191-1 | Eccentric shaft | | 2 |
| 191-2 | BB-608ZZ | Bearing | 608ZZ | 2 |
| 191-3 | 5515607 | C-Retaining Ring | S10 | 2 |
| 192 | HBS814GH-192 | Bearing Shaft Assembly | | 2 |
| 192-1 | HBS814GH-192-1 | Bearing Shaft | | 2 |
| 192-2 | BB-608ZZ | Bearing | 608ZZ | 2 |
| 192-3 | 5515607 | C-Retaining Ring | S10 | 2 |
| 198 | HBS814GH-198 | Brush Assembly | | 1 |
| 198-1 | HBS814GH-198-1 | Brush Support | | 1 |
| 198-2 | HBS814GH-198-2 | Brush | | 1 |
| 198-3 | HBS814GH-198-3 | Bushing | | 1 |
| 198-4 | HBS814GH-285 | Washer | 10 x 20 x 2 | 1 |
| 198-5 | TS-1523031 | Socket Set Screw | M6-1 x 10L | 1 |
| 198-6 | HBS814GH-198-6 | Bushing | | 1 |
| 200 | HBS814GH-200 | Phillips Pan Head Machine Screw | 1/4"-20 x 3/8"L | 2 |
| 201 | TS-0680021 | Flat Washer | 1/4" | 2 |
| 202 | HBS814GH-202 | Blade Guide Assembly | | 1 |
| 202-1 | HBS814GH-202-1 | Blade Adjustable | | 1 |

| | | | | |
|--------|-----------------|----------------------------|--------------------------|----|
| 202-5 | TS-1540071 | Hex Nut | M10-1.5 x P1 | 2 |
| 202-6 | TS-2361101 | Lock Washer | M10 | 2 |
| 202-13 | HBS814GH-202-13 | Carbide Guide | | 2 |
| 202-14 | TS-0207041 | Socket Head Cap Screw | 1/4"-20 x 3/4"L | 2 |
| 202-15 | HBS814GH-202-15 | Top Guide Right | | 1 |
| 211 | HBS814GH-211 | Washer | 8 x 18 x 1.5 | 2 |
| 212 | TS-0720081 | Lock Washer | 5/16" | 2 |
| 213 | TS-0208121 | Socket Head Cap Screw | 5/16"-18 x 2-1/2"L | 2 |
| 231 | HBS814GH-231 | Handle Body | | 1 |
| 232 | HBS814GH-232 | Blade Tension Bar | | 1 |
| 233 | HBS814GH-233 | Knob | | 2 |
| 234 | HBS814GH-234 | Indicator plate | | 1 |
| 235 | HBS814GH-235 | Thrust Rearing | 10 x 25 x 2 | 2 |
| 238 | HBS814GH-238 | Sleeve | | 1 |
| 239 | HBS814GH-239 | Spring | 23 x 12.2 x 1.5t | 8 |
| 240 | HBS814GH-240 | Scale | | 1 |
| 241 | HBS814GH-241 | Rivet | Ø2 x 6 | 2 |
| 249 | HBS814GH-249 | Spring | | 1 |
| 271A | HBS814GH-271A | Electrical Control Box | | 1 |
| 272 | HBS814GH-272 | Cable Clamp | | 2 |
| 281 | TS-081F052 | Pan Head Phillips Screw | 1/4"-20 x 3/4"L | 8 |
| 282 | HBS814GH-143 | Washer | 6.3 x 16 x 1.5 | 16 |
| 283 | TS-0570011 | Hex Nut | 1/4-20 | 8 |
| 284 | TS-0060051 | Hex Cap Screw | 3/8"-16 x 1"L | 8 |
| 285 | HBS814GH-285 | Washer | 10 x 20 x 2 | 16 |
| 286 | TS-0561031 | Hex Nut | 3/8-16 | 8 |
| 287 | HBS814GH-287 | Valve Assembly | | 1 |
| 287-1 | HBS814GH-287-1 | Micro Control Block | PT1/8" x 1/4" | 1 |
| 287-2 | HBS814GH-287-2 | Valve | PT1/8" x 1/8" | 1 |
| 287-3 | HBS814GH-287-3 | Jet Pipe | | 1 |
| 287-4 | HBS814GH-287-4 | O-Ring | 8 x 4.5 x 1.9 | 1 |
| 290 | HBS814GH-105 | Cross Socket Head Screw | 1/4"-20 x 5/8"L | 2 |
| 291 | HBS814GH-143 | Washer | 6.3 x 16 x 1.5 | 2 |
| 292 | HBS814GH-292 | Support Plate | | 1 |
| 400 | HBS814GH-400 | Limit Plate | | 1 |
| 401 | HBS814GH-143 | Washer | 6 x 16 x 1.5mm | 2 |
| 402 | TS-0207031 | Socket Head Cap Screw | 1/4"-20 x 5/8" | 2 |
| 403 | TS-0570011 | Nut | 1/4" | 1 |
| 404 | TS-0208071 | Socket Head Cap Screw | 5/16"-18 x 1-1/4" | 1 |
| 405 | HBS814GH-405 | Bracket | | 1 |
| 406 | TS-1550041 | Washer | M6 | 2 |
| 407 | TS-133032 | Pan Head Phillips Screw | M5-0.8 x 10 | 2 |
| 408 | HBS814GH-408 | Limit Switch | | 1 |
| 409 | TS-1550021 | Washer | M4 | 2 |
| 410 | HBS814GH-410 | Pan Head Phillips Screw | M4-0.4 x 30L | 2 |
| 800 | HBS814GH-800 | Gear Box Assembly | | 1 |
| 801 | HBS814GH-801 | Key | 6 x 6 x 40L | 1 |
| 802 | HBS814GH-802 | Motor | 1HP, 110/220V, 60HZ, 1PH | 1 |
| | HBS814GH-MF | Motor Fan (not show) | | 1 |
| | HBS814GH-MFC | Motor Fan Cover (not show) | | 1 |
| 803 | TS-1505041 | Socket Head Cap Screw | M10-1.5 x 30L | 4 |
| 804 | TS-2361101 | Lock Washer | M10 | 4 |

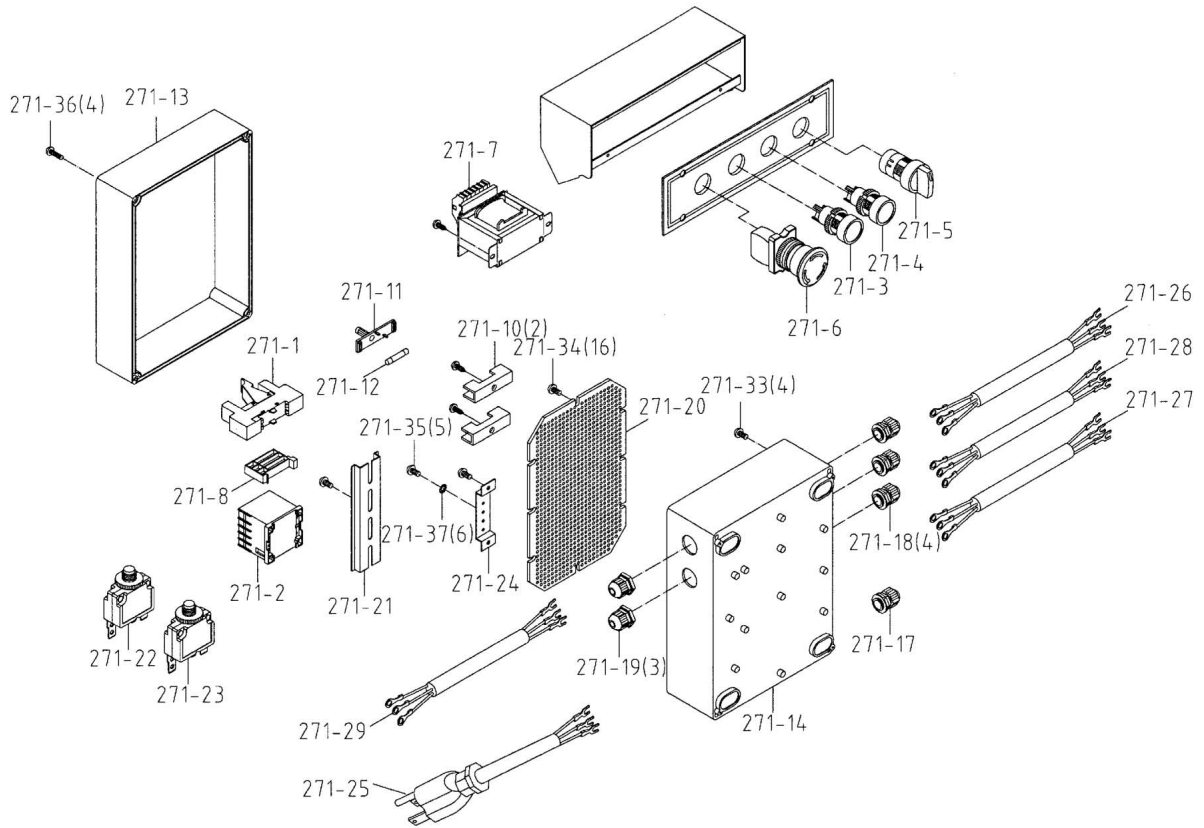
Gear Box Assembly



Parts List: Gear Box Assembly

| Index No. | Part No. | Description | Size | Qty |
|-----------|-----------------|---------------------------|--------------|-----|
| | HBS814GH-800 | Gear Box Assembly | | 1 |
| 800-1 | HBS814GH-800-1 | Gear Box Enclosure | | 1 |
| 800-2 | HBS814GH-800-2 | Gear Box Cover | | 1 |
| 800-3 | HBS814GH-800-3 | Speed-Changing Gear Shaft | | 1 |
| 800-4 | HBS814GH-800-4 | Speed Lever | | 1 |
| 800-5 | HBS814GH-800-5 | Spring | | 1 |
| 800-6 | SB-8MM | Steel Ball | 8 | 1 |
| 800-7 | HBS814GH-800-7 | Speed Indicator Dial | | 1 |
| 800-8 | TS-1502071 | Socket Head Cap Screw | M5-0.8 x 28L | 1 |
| 800-9 | HBS814GH-800-9 | Worm Shaft | | 1 |
| 800-10 | HBS814GH-800-10 | Speed-Changing Rod | | 1 |
| 800-11 | HBS814GH-800-11 | Speed-Changing Key | | 1 |
| 800-12 | HBS814GH-800-12 | Torsion Spring | | 1 |
| 800-13 | HBS814GH-800-13 | Pin | 3 x 10L | 2 |
| 800-14 | HBS814GH-800-14 | Gear | | 1 |
| 800-15 | HBS814GH-800-15 | Gear | | 1 |
| 800-16 | HBS814GH-800-16 | Gear | | 1 |
| 800-17 | HBS814GH-800-17 | Washer | | 4 |
| 800-18 | HBS814GH-800-18 | Bushing Bracket | | 1 |
| 800-19 | PWBS14-123 | C-Retainer Ring | R35 | 2 |
| 800-20 | TS-1523011 | Socket Set Screw | M6-1 x 6L | 2 |
| 800-21 | HBS814GH-800-29 | Bearing | 6003LLB | 2 |
| 800-22 | HBS814GH-800-22 | Cover | | 1 |
| 800-23 | HBS814GH-800-23 | Gear Shaft | | 1 |
| 800-24 | HBS814GH-800-24 | Gear | | 1 |
| 800-25 | HBS814GH-800-25 | Gear | | 1 |
| 800-26 | HBS814GH-800-26 | Gear | | 1 |
| 800-27 | 6291479 | Key | 5 x 5 x 32L | 1 |
| 800-28 | 5513018 | C-Retainer Ring | S17 | 2 |
| 800-29 | HBS814GH-800-29 | Bearing | 6003LLB | 1 |
| 800-30 | HBS814GH-800-30 | Bearing | 6007LLB | 1 |
| 800-31 | HBS814GH-800-31 | C-Retainer Ring | R62 | 1 |
| 800-33 | HBS814GH-800-33 | Oil Seal | 62 x 35 x 8 | 1 |
| 800-37 | HBS814GH-800-37 | Drive Gear Shaft | | 1 |
| 800-38 | HBS814GH-800-38 | Worm Gear | | 1 |
| 800-39 | 5519933 | C-Retainer Ring | S25 | 2 |
| 800-40 | 1020A-292 | Key | 6 x 6 x 20L | 2 |
| 800-41 | HBS814GH-800-41 | Bearing | 60205LLB | 2 |
| 800-42 | HBS814GH-800-42 | Bearing Spacer | | 1 |
| 800-43 | HBS814GH-800-43 | Cover | | 1 |
| 800-44 | HBS814GH-800-44 | O-Ring | 35 x 29 x 3 | 2 |
| 800-45 | TS-1533042 | Cross Round Head Screw | M5-0.8 x 13L | 3 |
| 800-46 | HBS814GH-800-46 | Plug | PT3/8" | 1 |
| 800-47 | TS-1503051 | Socket Head Cap Screw | M6-1 x 20L | 4 |
| 800-48 | HBS814GH-800-48 | Vent Plug | | 1 |
| 800-49 | HBS814GH-800-49 | Scale | | 1 |
| 800-50 | HBS814GH-800-50 | Rivet | 2 x 4 | 2 |
| 800-51 | HBS814GH-800-51 | Bearing Cover | | 1 |
| 800-52 | TS-1533032 | Cross Round Head Screw | M5-0.8 x 10L | 3 |
| 800-53 | HBS814GH-800-53 | Gear Box Gasket | | 1 |
| 800-54 | HBS814GH-800-54 | Plug | PT1/4" | 1 |
| 800-55 | HBS814GH-800-55 | Oil level gauge | 19 | 1 |
| 800-56 | HBS814GH-800-56 | O- Ring | 15.8 x 2.4b | 1 |
| 800-57 | HBS814GH-800-57 | C-Retainer Ring | R20 | 1 |

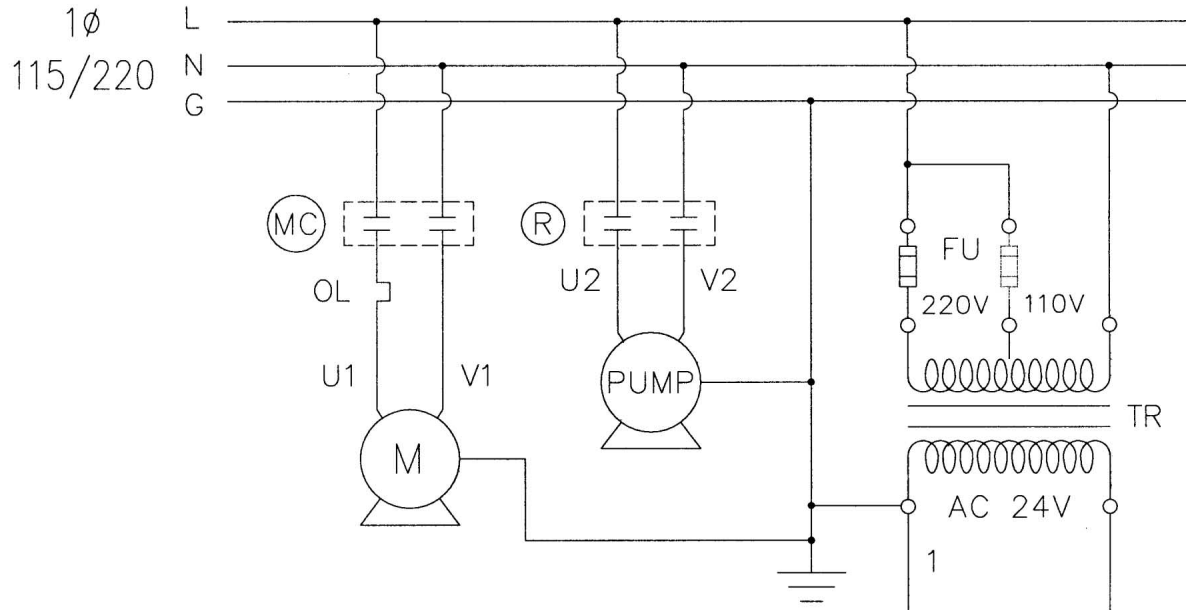
Electrical Control Box Assembly



Parts List: Electrical Control Box Assembly

| Index No. | Part No. | Description | Size | Qty |
|-----------|-----------------|---------------------------------|---------|-----|
| | HBS814GH-271A | Electrical Control Box Assembly | | 1 |
| 271-1 | HBS814GH-271-1 | Relay | | 1 |
| 271-2 | HBS814GH-271-2 | Magnetic Contactor | | 1 |
| 271-3 | HBS814GH-271-3 | Push-Button Stop | | 1 |
| 271-4 | HBS814GH-271-4 | Push-Button Switch | | 1 |
| 271-5 | HBS814GH-271-5 | Selector Switch | | 1 |
| 271-6 | HBS814GH-271-6 | Emergency-Stop Switch | | 1 |
| 271-7 | HBS814GH-271-7 | Transformer | | 1 |
| 271-8 | HBS814GH-271-8 | End Clip Dinn | | 1 |
| 271-10 | HBS814GH-271-10 | Fuse-Base | | 2 |
| 271-11 | HBS814GH-271-11 | Fuse-Lid | | 1 |
| 271-12 | HBS814GH-271-12 | Fuse | | 1 |
| 271-13 | HBS814GH-271-13 | Cover Electrical Enclosure | | 1 |
| 271-14 | HBS814GH-271-14 | Electrical Enclosure | | 1 |
| 271-17 | HBS814GH-271-17 | Cord Grip (18/2 SJT) | | 1 |
| 271-18 | HBS814GH-271-18 | Cord Grip (14/3 SJT) | | 4 |
| 271-19 | HBS814GH-271-18 | Cord Grip (14/4 SJT) | | 3 |
| 271-20 | HBS814GH-271-20 | Mount Grill | | 1 |
| 271-21 | HBS814GH-271-21 | Din-Rails | | 1 |
| 271-22 | HBS814GH-271-22 | Auto-Reset | | 1 |
| 271-23 | HBS814GH-271-23 | Auto-Reset | | 1 |
| 271-24 | HBS814GH-271-24 | Ground strip | | 1 |
| 271-25 | HBS814GH-271-25 | Power Cable | | 1 |
| 271-26 | HBS814GH-271-26 | Motor Cable | | 1 |
| 271-27 | HBS814GH-271-27 | Limit Cable | | 1 |
| 271-28 | HBS814GH-271-28 | Pump Cable | | 1 |
| 271-29 | HBS814GH-271-29 | Control Cable | | 1 |
| 271-33 | TS-133032 | Phillips Pan Head Machine Screw | M5 × 8 | 4 |
| 271-34 | HBS814GH-271-34 | Tap Screw | M4 × 8 | 16 |
| 271-35 | TS-2284082 | Phillips Pan Head Machine Screw | M4 × 8 | 5 |
| 271-36 | TS-1532052 | Phillips Pan Head Machine Screw | M4 × 15 | 4 |
| 271-37 | TS-1550031 | Washer | M5 | 6 |

Electrical Connections



- M :Motor
- PUMP :Coolant pump
- TR :Transformer
- FU :Fuse
- OL :Overload
- FU :Fuse
- MC :Magnetic Contactor
- R :Relay
- LS :Limit Switch
- ON :Start Button
- OFF :Stop Button
- SC :Choice Switch
- EMG :Emergency-Stop Switch

