

# WILTON<sup>®</sup>

## WMH TOOL GROUP

### Operating Instructions and Parts Manual Belt and Disc Sander

Model 41002

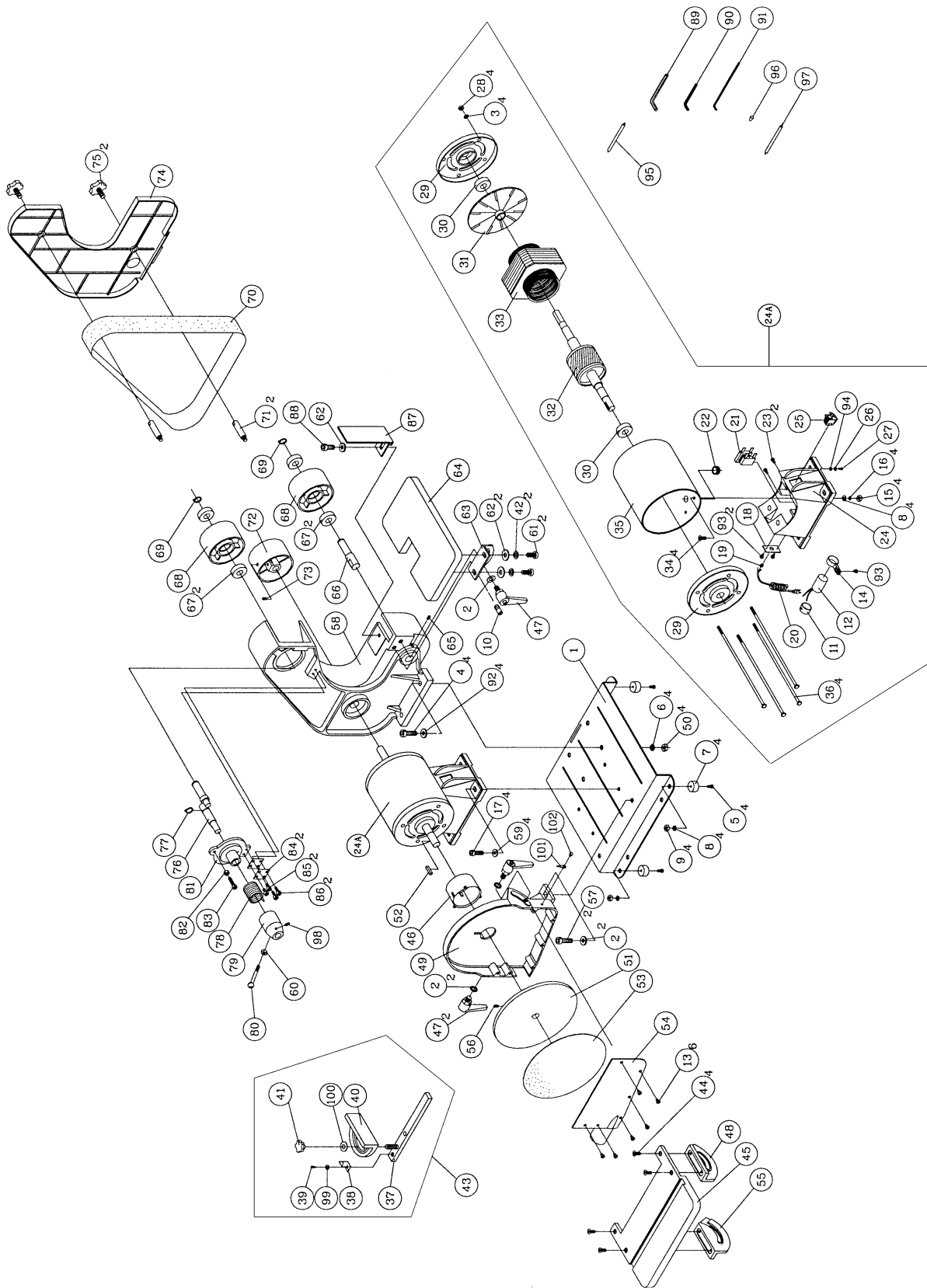


#### WMH TOOL GROUP

2420 Vantage Drive  
Elgin, Illinois 60123  
Ph.: 800-274-6848  
[www.wmhtoolgroup.com](http://www.wmhtoolgroup.com)

**Part No. M-41002**  
Revision A 10/05  
Copyright © WMH Tool Group

# 2x42x8 Belt and Disc Sander



## Parts List for 2x42x8 Belt and Disc Sander

Index No.	Part No.	Description	Size	Qty
1	41002-01	Base		1
2	TS-0680042	Flat Washer	3/8"	2
3	TS-1551031	Lock Washer	M5	4
4	TS-1515041	Socket Head Cap Screw	M8x30	4
5	TS-0050021	Hex Cap Screw	1/4-20x5/8"	4
6	TS-0720081	Lock Washer	5/16"	4
7	41002-07	Rubber Foot		4
8	TS-0680021	Flat Washer	1/4"	4
9	TS-0570011	Hex Nut	1/4"-20	4
10	TS-1525021	Socket Set Screw	M10x12	1
11	41002-11	Capacitor Cap		1
12	41002-12	Capacitor	150 UF, 125VAC	1
13	HBS814GH-166-5	Cross Head Flat Screw	10-24x3/8"	6
14	41002-14	Capacitor Clamp		1
15	TS-0570011	Hex Nut	1/4"-20	4
16	TS-0720071	Lock Washer	1/4"	4
17	TS-1504051	Socket Head Cap Screw	M8x25	4
18	41002-18	Strain Relief Plate		1
19	41002-19	Strain Relief	6N-4	1
20	41002-20	Line Cord		1
21	41002-21	Relay		1
22	41002-22	Strain Relief Bushing		1
23	41002-23	Self Tapping Screw	10-24X3/8"	2
24	41002-24	Motor Housing Base		1
24A	41002-24A	Motor Assembly	115V, 1Ph	1
25	41002-25	Switch with Key		1
26	41002-26	Copper Washer		1
27	TS-081C022	Phillips Pan Head Machine Screw	10-24x3/8"	1
28	TS-1540031	Hex Nut	M5	4
29	41002-29	End Shield		2
30	BB-6203ZZ	Bearing	6203ZZ	2
31	41002-31	Motor Fan		1
32	41002-32	Armature		1
33	41002-33	Stator		1
34	41002-34	Pan Head Screw	1/4-20x7/8"	4
35	41002-35	Motor Housing		1
36	41002-36	Pan Head Screw	M5x0.8x163	4
37	41002-37	Bar		1
38	41002-38	Pointer		1
39	HBS814GH-200	Phillips Pan Head Machine Screw	1/4x3/8"	1
40	41002-40	Miter Body		1
41	41002-41	Knob		1
42	TS-2361081	Lock Washer	M8	2
43	41002-43	Miter Gauge Assembly (includes index 37 thru 41, 99, 100)		1
44	TS-1534052	Phillips Pan Head Machine Screw	M6x15	4
45	41002-45	Disc Table		1
46	41002-46	Armature Guard		1
47	41002-47	Handle		3
48	41002-48	Right Trunnion		1
49	41002-49	Disc Guard		1
50	TS-1540061	Hex Nut	M8	4
51	41002-51	Aluminum Disc	8"	1
52	6291479	Key	5x5x30mm	1
53	5640211	Abrasive Disc, 100 grit	8"	1
54	41002-54	Dust Chute		1
55	41002-55	Left Trunnion		1
56	TS-1523011	Socket Set Screw	M6x6	1

57	TS-1505021	Socket Head Cap Screw	M10x20	2
58	41002-58	Belt Housing		1
59	TS-0680031	Flat Washer	5/16"	4
60	TS-0570011	Hex Nut	1/4"-20	1
61	TS-1490021	Hex Cap Screw	M8x16	2
62	TS-0680031	Flat Washer	5/16"	3
63	41002-63	Belt Table Bracket		1
64	41002-64	Belt Table		1
65	TS-1524031	Socket Set Screw	M8x12	1
66	41002-66	Shaft		1
67	BB-6202ZZ	Bearing	6202ZZ	4
68	41002-68	Idler Wheel		2
69	5640491	Retaining Ring	S-15	2
70	41002-70	Abrasive Belt	100 Grit 2"x42"	1
71	41002-71	Stand Off		2
72	41002-72	Drive Wheel		1
73	TS-1523031	Socket Set Screw	M6x10	1
74	41002-74	Belt Cover		1
75	41002-75	Knob		2
76	41002-76	Tracking Wheel Cam Shaft		1
77	5513018	Retaining Ring	S-17	1
78	41002-78	Tension Spring		1
79	41002-79	Spring Cap		1
80	41002-80	Handle with Knob		1
81	41002-81	Tracking Bracket		1
82	TS-1540041	Hex Nut	M6	1
83	TS-1503051	Socket Head Cap Screw	M6x20	1
84	41002-84	Spring Plate		2
85	TS-1502021	Socket Head Cap Screw	M5x10	2
86	TS-1502031	Socket Head Cap Screw	M5x12	2
87	41002-87	Belt Platen		1
88	TS-1504031	Socket Head Cap Screw	M8x16	1
89	TS-152707	Hex Wrench	M6	1
90	TS-152705	Hex Wrench	M4	1
91	TS-152704	Hex Wrench	3mmx140L	1
92	TS-0680031	Flat Washer	5/16"	4
93	41002-93	Pan Head Screw	10-24x1/4"	3
94	41002-94	Serrated Washer	M5	1
95	41002-95	Cable	18# 100m/m	1
96	41002-96	Terminal	A-3	1
97	41002-97	Cable	22# 200m/m	1
98	TS-0267041	Socket Set Screw	1/4-20x3/8"	1
99	TS-1550031	Flat Washer	M5	1
100	TS-0680022	Flat Washer	1/4"	1
101	41002-101	Indicator		1
102	41002-93	Pan Head Screw	10-24x1/4"	1