

## Saw Table - 0 601 B13 010 - 4100

www.powertools-aftersaleservice.com



**BOSCH**

Item	Part Number	Description	Illustration	Price	Quantity	Price Group
1	1 619 PA8 038	Motor Spare Parts Set	2	-,-	1	-
2	1 619 PA5 590	Field	2	-,-	1	44
3	1 619 PA5 591	Armature	2	-,-	1	46
4	2 610 950 037	On-Off Switch	3	-,-	1	-
5	2 610 996 945	Power supply cord	3	-,-	1	35
6	2 610 950 038	Grommet	3	-,-	1	11
7	2 610 358 842	Clamp	3	-,-	1	11
8	2 610 950 039	Nameplate	3	-,-	1	-
9	2 610 950 040	Label	3	-,-	1	-
10	2 610 997 207	Carbon-Brush Set	2	-,-	1	26
12	2 610 997 306	Speed governor 115-120V	2	-,-	1	42
13	2 610 004 595	Ball Bearing	2	-,-	1	24
14	2 610 911 927	Ball Bearing	2	-,-	1	31
19	2 610 358 841	Hex Screw	3	-,-	2	11
20	2 610 950 041	Warning Label	3	-,-	1	-
22	2 610 996 865	Cover	2	-,-	1	26
23	2 610 018 983	Attachment Screw new	2	-,-	3	10
24	2 610 916 802	Brush-Cover Ø 22mm	2	-,-	2	13
24	2 610 911 859	Brush-Cover Ø 20mm	2	-,-	2	12
26	2 610 911 569	Insert	2	-,-	2	13
27	2 610 911 929	Screw	2	-,-	2	10
28	2 610 996 948	Rubber Ring	2	-,-	1	11
29	2 610 911 566	Bearing cover	2	-,-	1	14
30	2 610 950 427	Set screw	2	-,-	2	10
31	2 610 996 863	Gear Housing	2	-,-	1	42
32	2 610 945 505	Screw	2	-,-	2	-
33	2 610 950 042	Spring Washer	2	-,-	1	10
34	2 610 996 949	Ball Bearing	2	-,-	1	26
35	2 610 997 281	Spring retaining ring	2	-,-	1	10
36	2 610 997 208	Toothed Gear	2	-,-	1	35
37	2 610 996 869	Gear Cover	2	-,-	1	31
38	2 610 358 916	Spring retaining ring	2	-,-	1	11
39	2 610 997 210	Ball Bearing	2	-,-	1	26

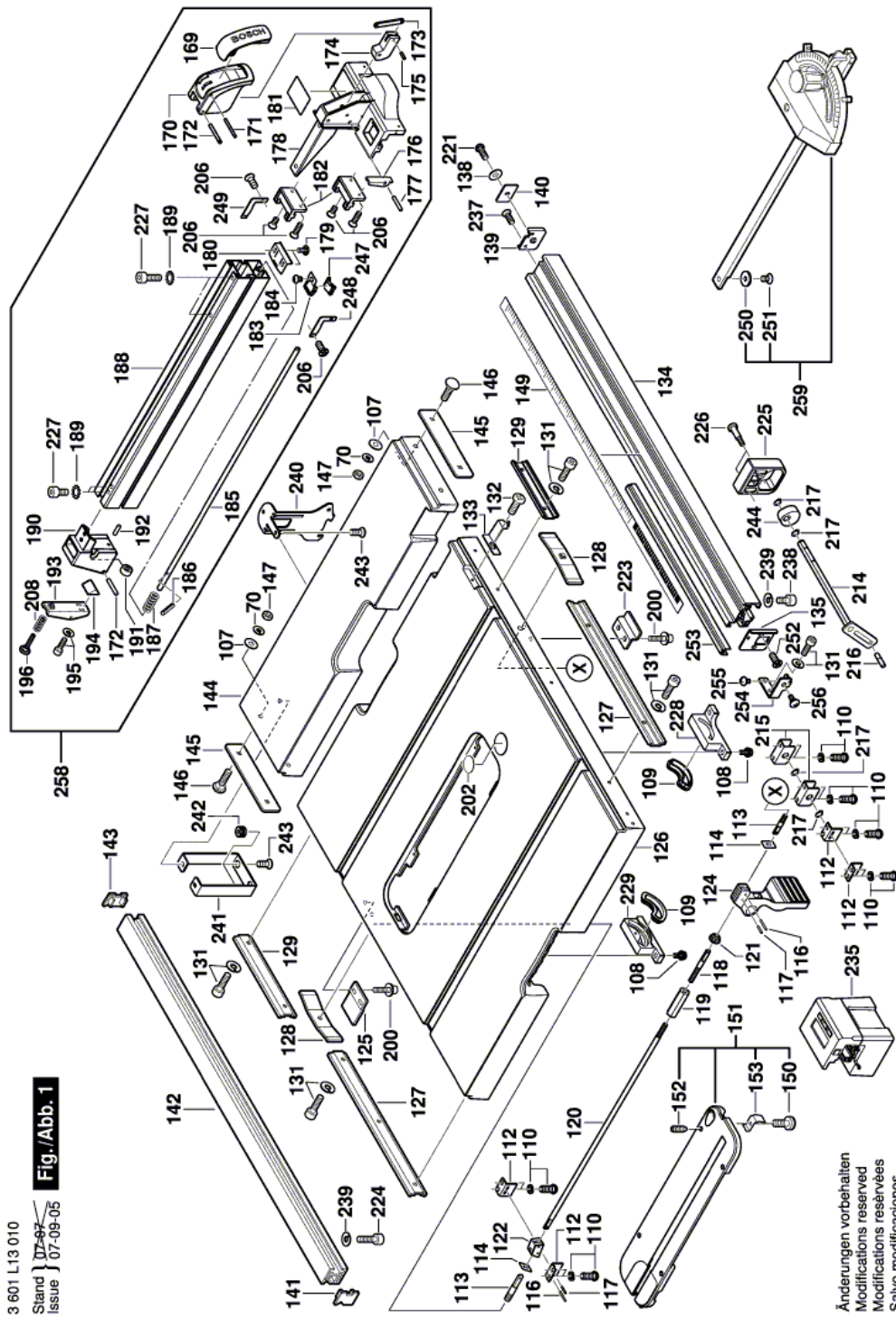
Item	Part Number	Description	Illustration	Price	Quantity	Price Group
40	2 610 950 043	Shaft	2	-,-	1	-
41	2 610 993 102	Woodruff Key	2	-,-	1	12
42	2 610 996 932	Bearing Sleeve	2	-,-	1	13
43	2 610 950 044	Screw	2	-,-	3	10
44	2 610 998 572	Screw	2	-,-	4	10
45	2 610 996 875	Torsion Spring	2	-,-	1	11
46	2 610 996 874	Locking Lever	2	-,-	1	23
47	2 610 996 876	Shoulder Screw	2	-,-	1	11
48	2 610 950 045	Washer	2	-,-	1	20
49	2 610 950 046	Washer	2	-,-	1	24
50	2 610 950 047	Arbor	2	-,-	1	11
51	2 610 996 879	Wing Screw	2	-,-	1	13
52	2 610 950 048	Cover Plate	2	-,-	1	-
53	2 610 950 049	Screw	2	-,-	5	10
54	2 610 950 050	Cover Plate	2	-,-	1	-
55	2 610 950 051	Holding Plate	2	-,-	1	-
56	2 610 950 052	Guiding bolt	2	-,-	2	20
57	2 610 997 276	Spring retaining ring	3	-,-	1	10
58	2 610 950 053	Threaded Rod	2	-,-	1	-
59	2 610 998 573	Spring retaining ring	2	-,-	1	10
60	2 610 997 221	Bushing	2	-,-	1	17
61	2 610 996 896	Toothed Gear	2	-,-	2	18
62	2 610 912 587	Plain Washer	2	-,-	1	10
63	2 610 998 588	Screw	2	-,-	1	11
64	2 610 358 149	Nut	2	-,-	2	10
65	2 610 950 054	Pin	2	-,-	2	10
66	2 610 997 277	Spring retaining ring	3	-,-	1	10
67	2 610 997 212	Mounting Bracket	3	-,-	1	14
68	2 610 997 222	Bushing	3	-,-	1	11
70	2 610 355 325	Spring Washer	1	-,-	4	10
71	2 610 996 897	Shaft	N/A	-,-	1	23
72	2 610 996 933	Threaded Bushing	3	-,-	1	26
73	2 610 996 938	Bushing	3	-,-	1	21
74	2 610 950 055	Screw	3	-,-	3	10
75	2 610 997 271	Spring	3	-,-	1	11
76	2 610 998 550	Plain Washer	3	-,-	1	11
77	2 610 997 299	Plain Washer	3	-,-	1	11
78	2 610 997 298	Nut	3	-,-	1	17
79	2 610 950 056	Clamping Lever	3	-,-	1	24
80	2 610 950 057	Handwheel	N/A	-,-	1	26
81	2 610 950 058	Screw	3	-,-	1	10
82	2 610 950 059	Handle	3	-,-	1	10
83	2 610 950 060	Screw	3	-,-	1	12
84	2 610 950 061	Screw	3	-,-	1	10
85	2 610 950 062	Pointer	3	-,-	1	13
86	2 610 347 092	Plain Washer	3	-,-	2	10
87	2 610 911 901	Self-locking nut	2	-,-	4	11
89	2 610 996 929	End stop	3	-,-	2	11
90	2 610 950 063	Housing	3	-,-	1	-
91	2 610 997 294	Screw	3	-,-	4	10
92	2 610 950 064	Switch Cover	3	-,-	1	-
93	2 610 358 846	Rubber Bushing	3	-,-	4	11
94	2 610 996 930	Pickup Clip	3	-,-	2	14

Item	Part Number	Description	Illustration	Price	Quantity	Price Group
95	2 610 950 065	Holding Spring	3	-,-	2	-
96	2 610 950 066	Screw	3	-,-	6	-
97	2 610 990 504	Cable Clip	3	-,-	2	10
98	2 610 950 067	Screw	3	-,-	1	11
99	2 610 997 246	Nut	3	-,-	2	11
100	2 610 996 880	Box Wrench	3	-,-	1	17
101	2 610 997 247	Wing Nut	3	-,-	1	15
102	2 610 950 068	Clamp	3	-,-	1	12
103	2 610 998 574	Screw	3	-,-	2	10
104	2 610 998 567	Clamp Bushing	2	-,-	3	10
105	2 610 998 568	Connecting Cable	3	-,-	1	19
106	2 610 997 297	Screw	3	-,-	4	10
107	2 610 910 013	Washer	1	-,-	4	12
108	2 610 950 069	Screw	1	-,-	6	10
109	2 610 950 070	Bushing	1	-,-	2	10
110	2 610 950 071	Screw	1	-,-	12	10
111	2 610 998 587	Screw	2	-,-	4	10
112	2 610 996 921	Holding Bracket	1	-,-	4	11
113	2 610 996 913	Pin	1	-,-	2	16
114	2 610 996 917	Plate	1	-,-	2	11
116	2 610 997 275	Pin	1	-,-	2	11
117	2 610 997 274	Pin	1	-,-	2	10
118	2 610 996 918	Set screw	1	-,-	1	12
119	2 610 996 920	Connecting Nut	1	-,-	1	18
120	2 610 996 919	Rod	1	-,-	1	21
121	2 610 994 262	Clamp	1	-,-	1	12
122	2 610 996 915	Clamping Piece	1	-,-	1	23
124	2 610 950 073	Handle	1	-,-	1	-
125	2 610 997 217	End stop	1	-,-	1	12
126	2 610 950 074	Table	1	-,-	1	-
127	2 610 950 075	Mounting Rail	1	-,-	2	21
128	2 610 996 912	Fixing Plate	1	-,-	2	18
129	1 600 A00 724	Mounting Rail	1	-,-	2	12
131	2 610 951 945	Screw	1	-,-	10	10
132	2 610 950 077	Screw	1	-,-	1	10
133	2 610 950 078	Pointer	1	-,-	1	15
134	2 610 950 079	Profile Rail	1	-,-	1	-
135	2 610 951 941	Cap	1	-,-	1	-
138	2 610 950 080	Washer	1	-,-	1	10
139	2 610 950 082	Cap	1	-,-	1	21
140	2 610 950 083	Plate	1	-,-	1	21
141	2 610 997 218	Cover	1	-,-	1	10
142	2 610 950 084	Profile Rail	1	-,-	1	-
143	2 610 997 216	Cover	1	-,-	1	10
144	1 619 PA5 719	Table top	1	-,-	1	-
145	2 610 950 086	mounting plate	1	-,-	2	17
146	2 610 950 087	Screw	1	-,-	4	10
147	2 610 304 772	Nut	1	-,-	4	11
149	2 610 950 088	Label	1	-,-	1	-
150	2 610 950 089	Screw	1	-,-	1	-
151	2 610 950 090	Insert	1	-,-	1	-
152	2 610 950 091	Set screw	1	-,-	4	10
153	2 610 011 716	Holding Spring	1	-,-	1	11

Item	Part Number	Description	Illustration	Price	Quantity	Price Group
154	2 610 950 092	Protective Cover	2	-,-	1	43
157	2 610 950 093	Safety Device	2	-,-	1	33
169	2 610 950 094	Handle Cover	1	-,-	1	19
170	2 610 950 095	Housing	1	-,-	1	30
171	2 610 950 096	Bolt	1	-,-	1	10
172	2 610 950 097	Bolt	1	-,-	2	12
173	2 610 996 890	Lever	1	-,-	1	10
174	2 610 996 889	Cam	1	-,-	1	24
175	2 610 997 289	Pin	1	-,-	1	10
176	2 610 950 098	Clamping Plate	1	-,-	1	13
177	2 610 997 288	Pin	1	-,-	2	18
178	2 610 950 099	Housing	1	-,-	1	-
179	2 610 997 249	Shoulder Screw	1	-,-	2	10
180	2 610 950 100	Clamping Plate	1	-,-	1	11
181	2 610 997 810	Warning Plate	1	-,-	1	-
182	2 610 950 101	Pad	1	-,-	2	-
183	2 610 950 102	Bracket	1	-,-	1	16
184	2 610 950 103	Screw	1	-,-	1	-
185	2 610 950 104	Rod	1	-,-	1	-
186	2 610 950 105	Pin	1	-,-	1	10
187	2 610 996 888	Spring	1	-,-	1	11
188	2 610 950 106	Mitre Fence	1	-,-	1	-
189	2 610 358 802	Washer	1	-,-	4	11
190	2 610 950 107	Edge Guide	1	-,-	1	27
191	2 610 996 886	Roller	1	-,-	1	11
192	2 610 997 292	Pin	1	-,-	1	11
193	2 610 996 885	Clamping Plate	1	-,-	1	17
194	2 610 997 240	Clamping Piece	1	-,-	1	12
195	2 610 997 293	Screw	1	-,-	2	10
196	2 610 997 245	Adjusting Screw	1	-,-	1	13
197	2 610 911 920	Rubber Bushing	3	-,-	1	10
198	2 610 998 551	Hexagon Socket Screw Key	3	-,-	1	13
199	2 610 998 580	Screw	2	-,-	1	10
200	2 610 950 108	Screw	1	-,-	5	10
201	2 610 992 380	Spring retaining ring	2	-,-	4	10
202	2 610 997 817	Adhesive Label	1	-,-	1	15
203	2 610 358 932	Connector	2	-,-	1	11
204	2 610 950 109	Washer	2	-,-	2	10
205	2 610 950 110	Screw	3	-,-	2	10
206	2 610 950 111	Screw	1	-,-	8	-
207	2 610 911 933	Connector	2	-,-	2	10
208	2 610 998 593	Spring	1	-,-	1	10
209	2 610 912 588	Plain Washer	2	-,-	1	10
210	2 610 950 112	Pusher	3	-,-	1	21
211	2 610 950 113	Knob	3	-,-	1	-
212	2 610 950 114	Washer	3	-,-	3	10
213	2 610 950 115	Spring	3	-,-	1	10
214	2 610 950 116	Linkage	1	-,-	1	-
215	2 610 937 291	Mounting Bracket	1	-,-	2	14
216	2 610 937 292	Guide Pin	1	-,-	1	11
217	2 610 937 293	Retaining ring	1	-,-	4	10
218	2 610 950 117	Screw	3	-,-	4	10
219	2 610 950 389	Washer	3	-,-	1	10

Item	Part Number	Description	Illustration	Price	Quantity	Price Group
220	2 610 950 118	Profile Rail	3	-,-	4	10
221	2 610 950 119	Screw	1	-,-	1	10
222	2 610 950 120	Set screw	2	-,-	2	10
223	2 610 950 121	End stop	1	-,-	1	14
224	2 610 950 122	Screw	1	-,-	1	-
225	2 610 950 123	Screw	1	-,-	1	-
226	2 610 950 124	Screw	1	-,-	2	-
227	2 610 950 125	Screw	1	-,-	4	10
228	2 610 950 126	Mounting Bracket	1	-,-	1	21
229	2 610 950 127	Mounting Bracket	1	-,-	1	23
230	2 610 950 128	Plate	3	-,-	1	-
231	2 610 945 488	Screw	3	-,-	2	-
232	2 610 950 129	Plain Washer	3	-,-	1	10
233	2 610 950 130	Housing	3	-,-	1	-
234	2 610 950 131	Screw	3	-,-	13	-
235	2 610 950 081	Digital Display	1	-,-	1	-
236	2 610 950 132	Screw	3	-,-	2	10
237	2 610 950 133	Screw	1	-,-	2	10
238	2 610 950 134	Bolt	1	-,-	1	10
239	2 610 950 135	Washer	1	-,-	2	10
240	2 610 950 136	Mounting Bracket	1	-,-	1	18
241	2 610 950 137	Rubber Bushing	1	-,-	1	17
242	2 610 950 138	Rubber Bushing	1	-,-	2	10
243	2 610 950 139	Screw	1	-,-	4	10
244	2 610 950 140	Cam	1	-,-	1	-
245	2 610 950 141	Clamp	3	-,-	1	11
246	2 610 950 142	Riving Knife	2	-,-	1	-
247	2 610 950 143	Lens	1	-,-	1	13
248	2 610 950 144	Plate	1	-,-	1	-
249	2 610 950 145	Plate	1	-,-	1	-
250	2 610 950 146	Washer	1	-,-	1	10
251	2 610 950 147	Screw	1	-,-	1	10
252	2 610 951 942	Screw	1	-,-	2	-
253	2 610 951 943	Cover	1	-,-	1	-
254	2 610 951 944	Mounting Bracket	1	-,-	1	-
255	2 610 951 946	Screw	1	-,-	1	10
256	2 610 951 947	Screw	1	-,-	1	-
257	2 610 911 896	Nut	2	-,-	1	10
258	2 610 950 148	Mitre Fence	1	-,-	1	-
259	2 610 950 149	Miter Square	1	-,-	1	43
260	2 610 958 586	Screw	3	-,-	1	-

Illustration - Type E



3 601 L13 010  
Stand } 07-09-05  
Issue }

Fig./Abb. 1

Änderungen vorbehalten  
Modifications reserved  
Modificaciones reservadas  
Salvo modificaciones

Illustration - Type E

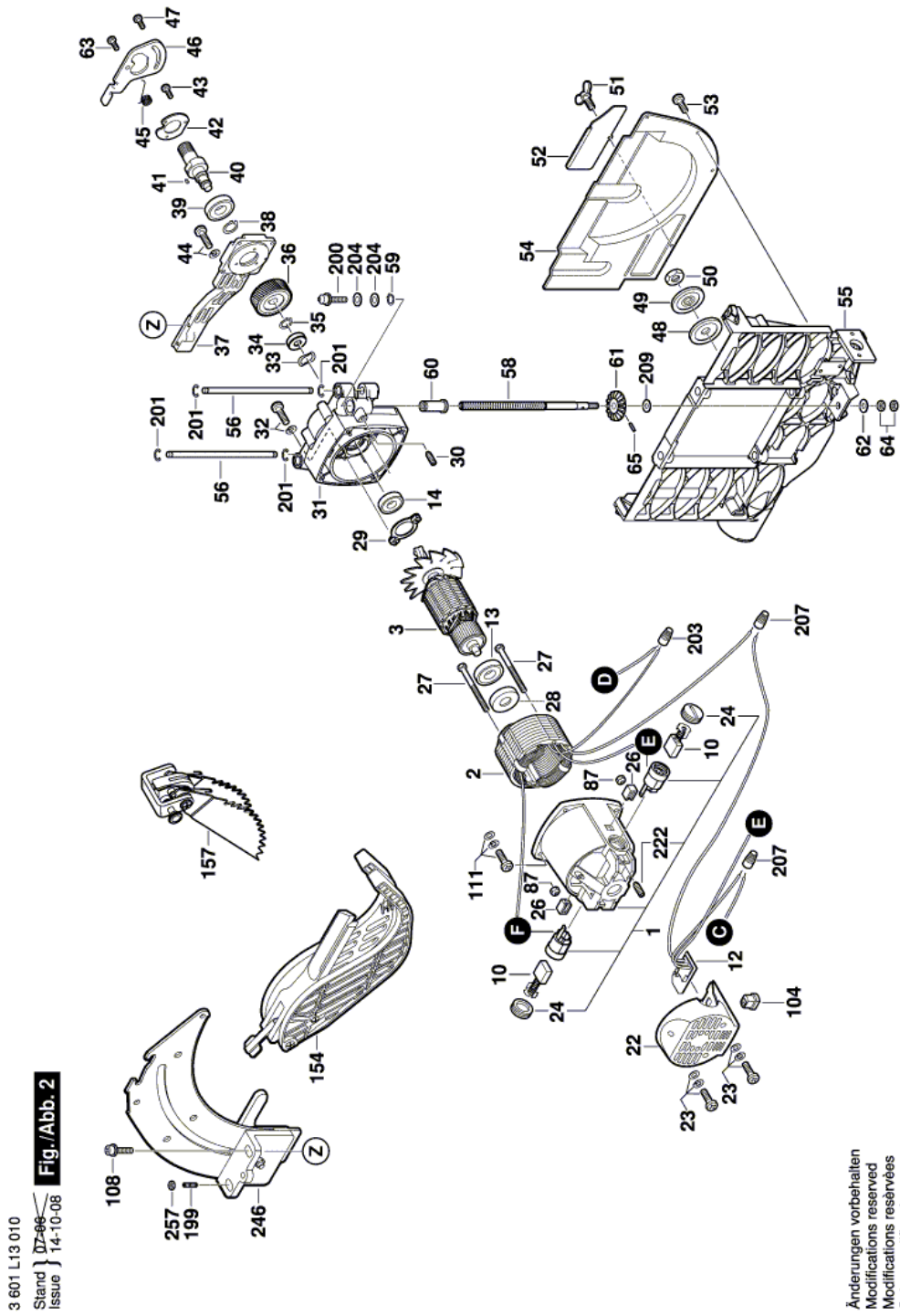
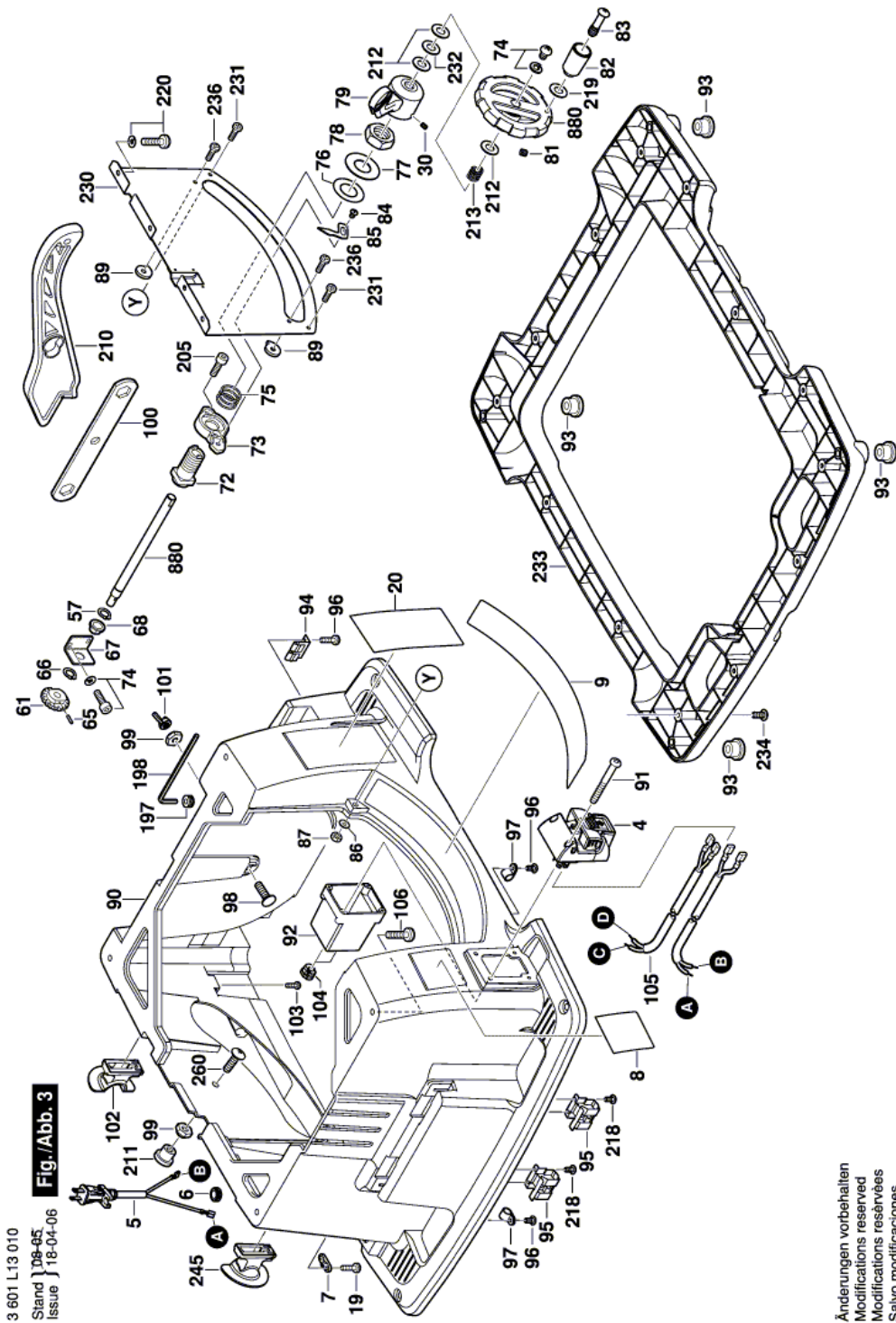




Illustration - Type E



Information subject to change without further notice.