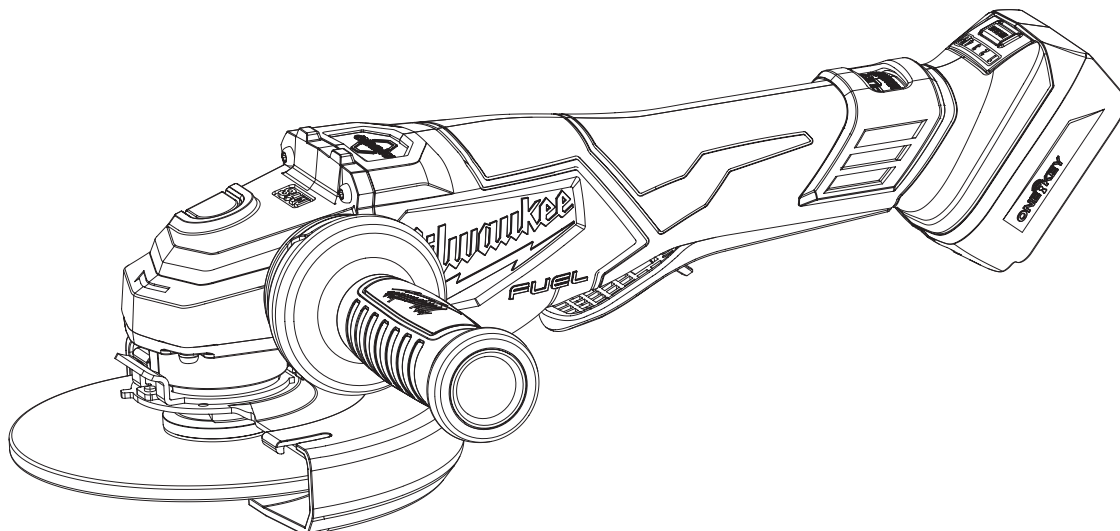




## SERVICE PARTS LIST

BULLETIN NO.  
54-38-2380

SPECIFY CATALOG NO. AND SERIAL NO. WHEN ORDERING PARTS		REVISED BULLETIN	DATE
<b>M18 FUEL™ 4-1/2"- 6" Braking Grinder w/One-Key</b>			Feb. 2025
CATALOG NO. <b>3672-20</b>	SERIAL NO. <b>P17A</b>	WIRING INSTRUCTION <b>See Pages 3-4</b>	



Only maintenance, service, repairs, and replacements of parts as defined in the Operator's Manual can be performed by the user.

All other repairs are to **ONLY** be performed by personnel authorized by MILWAUKEE TOOL. Do not attempt to install other parts; this **COULD** void your tool warranty.

### For service, parts, or inquiries, contact us:

- Customer Service at 1.800.SAWDUST (1.800.729.3878)
- E-Service tool repair at: [www.milwaukeetool.com/e-service](http://www.milwaukeetool.com/e-service)
- Find a local authorized MILWAUKEE service location at [Milwaukeetool.com](http://Milwaukeetool.com)
- Find a MILWAUKEE *factory* Service Center Location or MILWAUKEE *factory* Central Repair Center at [Milwaukeetool.com](http://Milwaukeetool.com). Send the following, posted paid and insured:
  - Your name, address, and phone number
  - Description of the issues
  - Copy of the proof of purchase
  - Tool, charger, and batteries involved with the issues

### MILWAUKEE *factory* Central Repair Centers:

MILWAUKEE TOOL  
Central Repair  
1401 Sycamore Avenue  
Greenwood, MS 38930

MILWAUKEE TOOL  
Central Repair  
2198 Southtech Drive  
Greenwood, IN 46143

# SERVICE PARTS EXPLODED VIEW

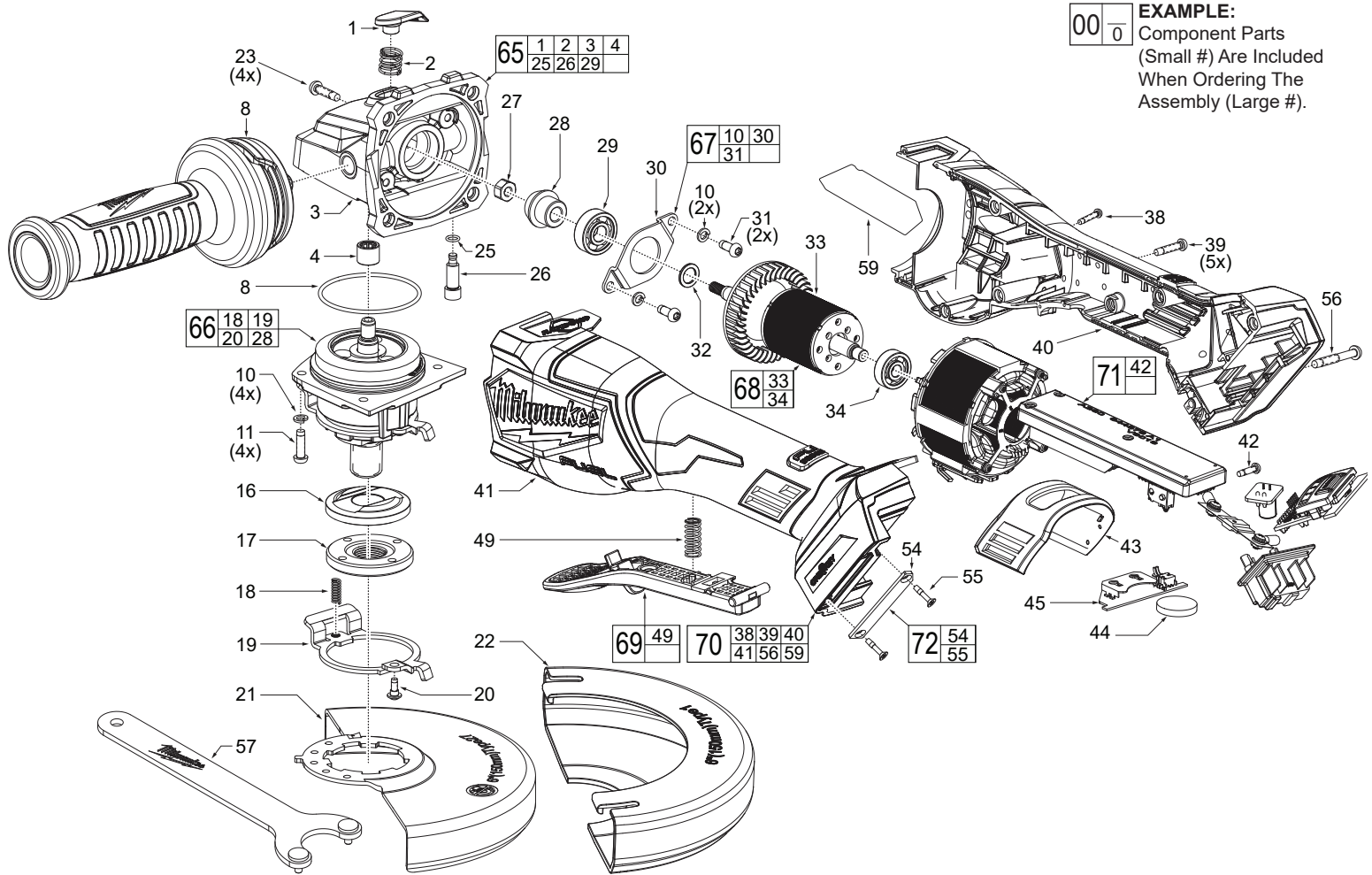


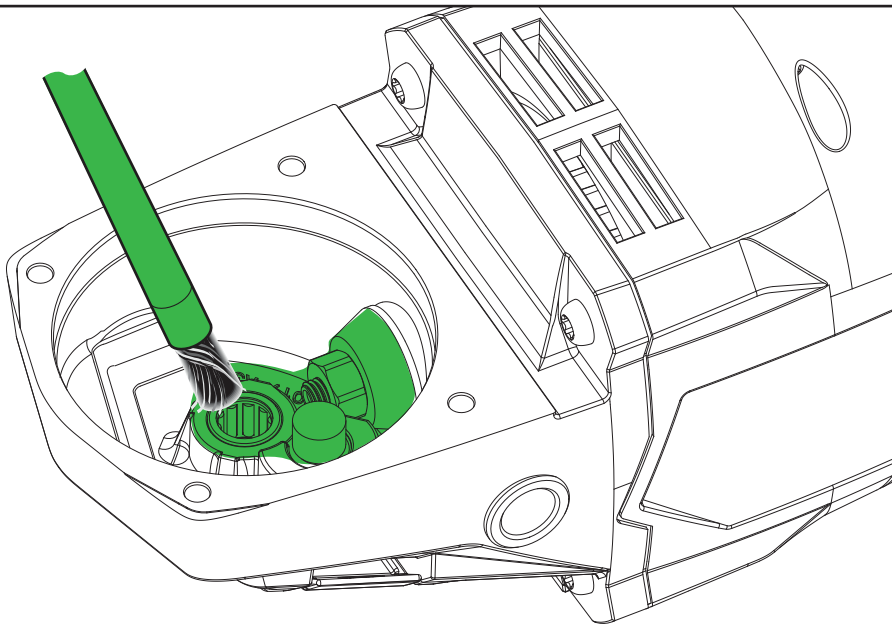
FIG.	PART NO.	DESCRIPTION OF PART	NO. REQ.
1	-----	Spindle Lock Button	(1)
2	-----	Spindle Lock Spring	(1)
3	-----	Gear Case	(1)
4	-----	Needle Bearing	(1)
8	34-40-0560	O-Ring	(1)
10	05-90-0225	Spring Washer	(6)
11	05-78-5316	M4 x 14mm Pan Hd. Taptite T20 Screw	(4)
16	43-34-3000	Disc Flange	(1)
17	44-40-7100	Flange Nut	(1)
18	40-50-0386	Spring	(1)
19	44-20-0091	Lock Tang	(1)
20	45-04-0031	M3 x .5mm Pan Washer Hd. Phillips Screw	(1)
21	28-41-0034	6" Type 27 Wheel Guard	(1)
22	43-54-4020	6" Type 1 Wheel Guard	(1)
23	05-88-1200	M4 x 16mm Pan Hd. Recess ST T20 Screw	(4)
24	42-62-0125	Side Handle	(1)
25	-----	O-Ring	(1)
26	-----	Spindle Lock Pin	(1)
27	05-55-0620	Hex Nut	(1)
28	32-05-0052	Bevel Pinion	(1)
29	-----	Ball Bearing	(1)
30	44-66-0450	Ball Bearing Retainer	(1)
31	05-78-0105	Pan Hd. Torx Taptite Screw	(2)
32	45-88-0406	Washer	(1)
33	-----	Rotor Assembly	(1)

FIG.	PART NO.	DESCRIPTION OF PART	NO. REQ.
34	02-04-0034	Ball Bearing	(1)
38	06-82-2385	M2.6 x 14mm Pan Hd. Torx T8 Screw	(1)
39	05-88-0122	M3.5 x 16mm Steel Screw	(5)
40	-----	Handle Housing - Cover	(1)
41	-----	Handle Housing - Support	(1)
42	06-82-1087	M3 x 12mm Pan-Hd Torx T-10 Screw	(1)
43	31-15-9010	Dust Cover	(1)
44	-----	Coin Cell Battery (CR2032) - See local hardware store	(1)
45	14-46-0471	Coin Cell PCBA Assembly	(1)
49	40-50-0167	Spring	(1)
54	-----	Coin Cell Cover	(1)
55	-----	M2.6 x 12mm Flat Hd. Phillips Screw	(2)
56	06-82-2025	M3.5 x 26mm PT Screw	(1)
57	49-96-7215	Wrench	(1)
59	12-20-3672	Service Nameplate	(1)
65	14-29-0001	Gearcase Assembly	(1)
66	14-29-0002	Gearcase Cover Housing Assembly	(1)
67	14-46-0448	Bearing Retainer Service Kit	(1)
68	16-01-0003	Motor Rotor Assembly	(1)
69	31-92-0010	Paddle Trigger Assembly	(1)
70	14-46-0469	Handle Housing Service Kit	(1)
71	14-20-0529	PCBA Assembly	(1)
72	14-46-0639	Coin Cell Cover Service Kit	(1)

## LUBRICATION NOTES

For the Gearcase Assembly (fig.65) apply "J" Grease (No. 49-08-4220). Coat bevel pinion, needle bearing hole and surrounding area liberally.

**NOTE - When servicing the Gear Case Assembly, 90-95% of the old grease must be removed prior to new grease being added.**

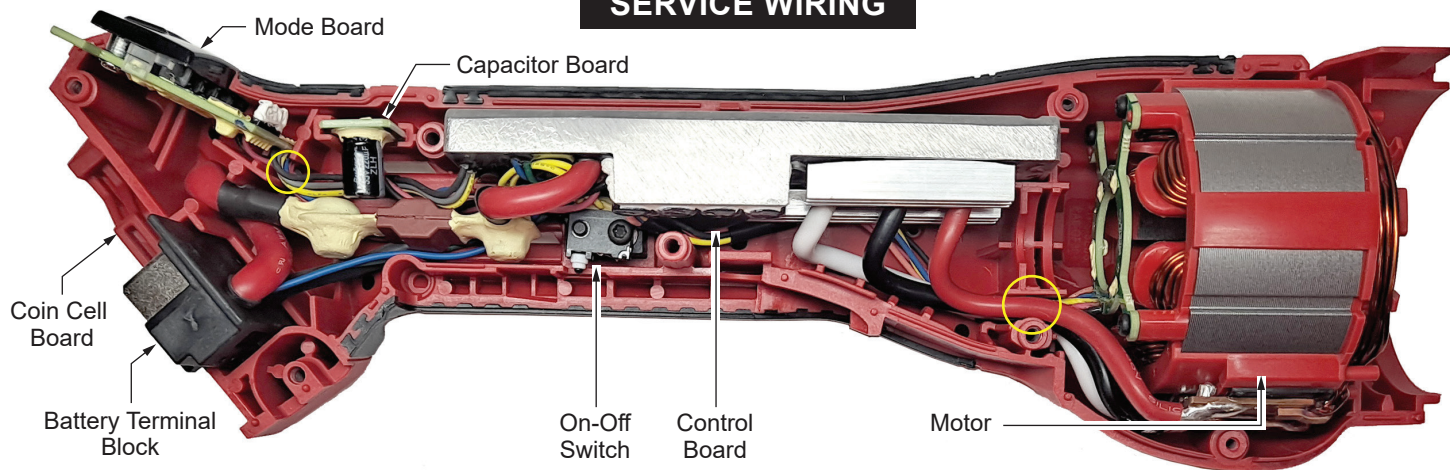


## SCREW TORQUE SPECS

SCREW TORQUE SPECIFICATIONS				
FIG.	PART NO.	WHERE USED	SEAT TORQUE	
			(kgf-cm)	(lb-in)
11	05-78-0316	Spindle Hub	23-29	20-25
20	05-88-0120	Spindle Hub	7-9	6-8
23	06-82-0168	Gearcase	15-19	13-16
27	05-55-0620	Rotor Shaft	100±2	89±1.7
31	05-88-0119	Bearing Retainer	23-29	20-25
38	05-88-0123	Handle Housing	5±0.5	4±0.4
39	05-88-0122	Handle Housing	12.5-16.5	10.8-14.3
42	06-82-1087	Switch	4±0.5	3±0.4
56	06-82-2025	Handle Housing	12.5-16.5	10.8-14.3



## SERVICE WIRING



- As an aid to reassembly, take notice of wire routing and position in wire guides and traps while dismantling tool.
- Be sure that all components of the electronics kit are seated firmly and squarely in the housing recesses.
- Avoid pinched wires, be sure that all wires and sleeves are pressed completely down in wire guides and traps.

- Prior to securing the housing cover onto the housing support, be sure that there are no interferences.
- Before installing the battery, check for proper functionality of paddle trigger.
- Install battery and depress paddle trigger to assure tool is operating properly.

### WIRING SPECIFICATIONS

Wire No.	Wire Color	Orientation
1	Red	From Power Control Board to Stator
2	Black	From Power Control Board to Stator
3	White	From Power Control Board to Stator
4	Red	From Power Control Board to Hall Board
5	Black	From Power Control Board to Hall Board
6	Yellow	From Power Control Board to Hall Board
7	Blue	From Power Control Board to Hall Board
8	Orange	From Power Control Board to Hall Board
9	Yellow	From Power Control Board to On-Off Switch
10	Yellow	From Power Control Board to On-Off Switch
11	Red	From Battery Terminal Block to Brake
12	Red	From Power Control Board to Brake
13	Red	From Mode Board to Coin Cell Board

### WIRING SPECIFICATIONS

Wire No.	Wire Color	Orientation
14	Black	From Mode Board to Coin Cell Board
15	Red	From Power Control Board to Mode Board
16	Orange	From Power Control Board to Mode Board
17	Blue	From Power Control Board to Mode Board
18	Yellow	From Power Control Board to Mode Board
19	Grey	From Power Control Board to Mode Board
20	Black	From Power Control Board to Mode Board
21	Black	From Power Control Board to External Capacitor Board
22	Red	From Power Control Board to External Capacitor Board
23	Black	From Power Control Board to Battery Terminal Block
24	Green	From Power Control Board to Battery Terminal Block
25	Blue	From Power Control Board to Battery Terminal Block

