

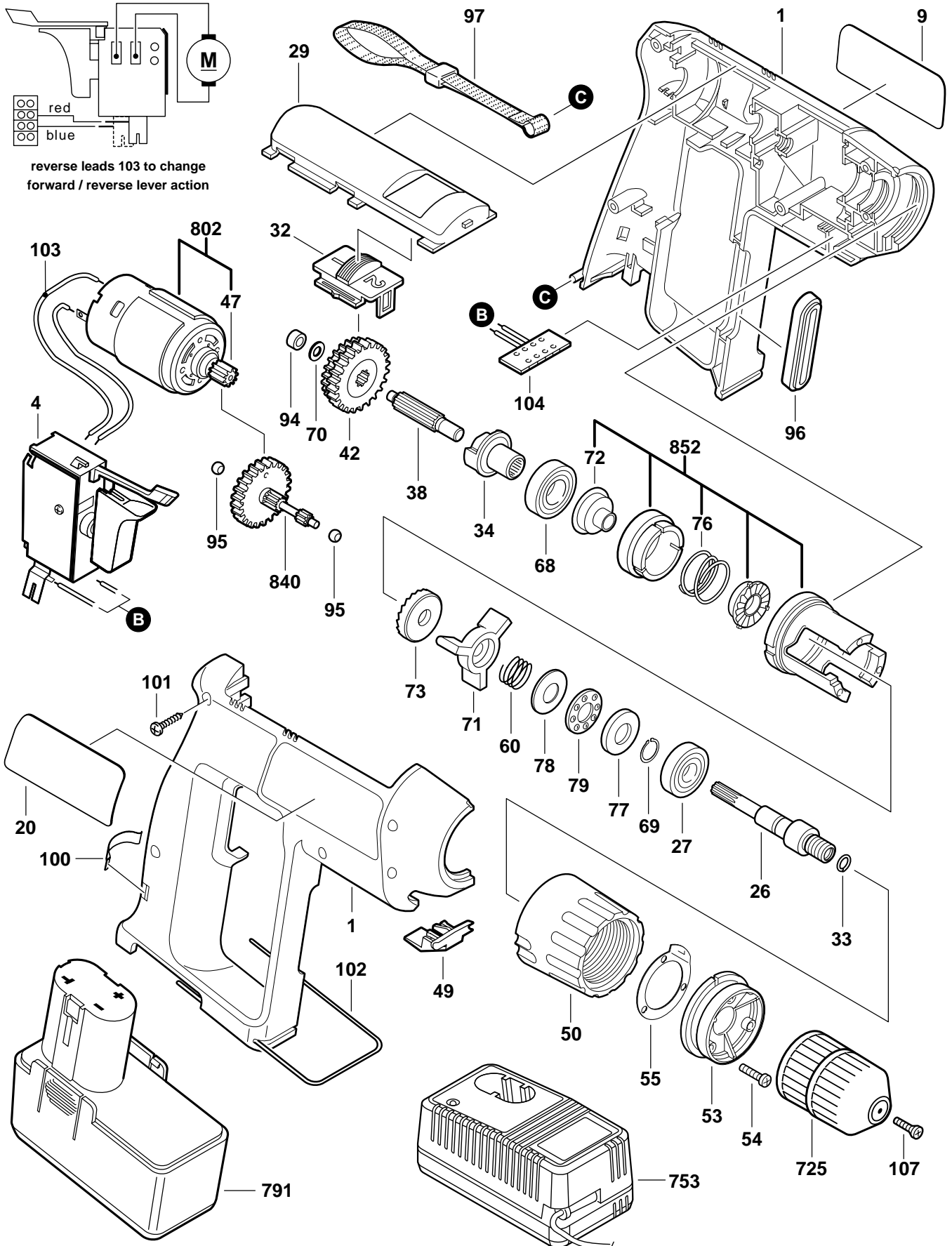
# BOSCH

January 1998  
INDUSTRIAL

## 12V HAMMER DRILL

### Model 0603926539

# 3500



reverse leads 103 to change forward / reverse lever action

# 3500 12V HAMMER DRILL

Pos.	Part Number	Description {Qty}	F/C	Pos.	Part Number	Description {Qty}	F/C
1	2 605 104 464	Housing Assembly	71	76	2 604 618 002	Spring	49
4	2 607 200 329	Switch VSR	17	77	2 600 190 064	Thrust Washer	65
9	2 610 911 648	Label "3500"	9	78	2 600 101 516	Thrust Washer	65
20	2 610 911 647	Nameplate	9	79	2 600 923 003	Thrust Bearing	56
26	2 606 309 038	Spindle 1/2"-20	52	94	2 600 301 011	Bushing	82
27	1 900 905 120	Ball Bearing	51	95	2 600 302 002	Bushing {2}	82
29	2 605 510 147	Housing Cover	70	96	2 600 290 022	Rubber Ring	78
32	2 601 099 058	Gear Select Lever	63	97	2 601 398 013	Strap	9
33	2 604 601 004	Retainer Ring	89	100	2 601 322 016	Clamping Spring	80
34	2 602 210 014	Drive Coupling	40	101	2 910 611 020	Screw {6}	89
38	2 606 309 037	Spline Shaft	54	102	2 601 329 041	Battery Retaining Clip	9
42	1 609 340 007	Gear	35	103	2 604 413 004	Cable 79mm {2}	10
47	2 606 316 129	Pinion Gear	33	104	2 608 018 004	Contact Plate	10
49	2 605 510 117	Cover	70	107	2 603 421 213	Rev. Screw (LH thread)	85
50	2 605 190 037	Setting Sleeve	64	725	2 608 572 030	Keyless Chuck 3/8"	91
53	2 608 005 045	Retaining Cover	81	753	2 607 224 231	1 Hour Charger 120V	18
54	2 603 410 043	Screw {3}	89	+ 753.1	2 610 992 343	15 Minute Charger 120V	18
55	2 600 190 056	Locating Plate	65	791	2 610 910 405	Battery Pack 12V 1.7A-h	18
60	2 604 618 001	Spring	27	791.1	2 607 335 090	Battery Pack 12V 1.3A-h	18
68	1 900 905 122	Ball Bearing	56	802	2 607 022 926	Motor w/Gear 12V	19
69	2 916 650 001	Retaining Ring	89			w/pos. 47	
70	2 600 100 569	Shim 1.0mm	65	840	2 606 308 921	Intermediate Gear	31
71	2 600 290 023	Support Ring	62	852	2 600 499 903	Setting Flange Assembly	73
72	2 600 322 004	Sleeve	49			w/pos. 72, 76	
73	2 606 490 060	Ratchet	41				

**Service Notes:**