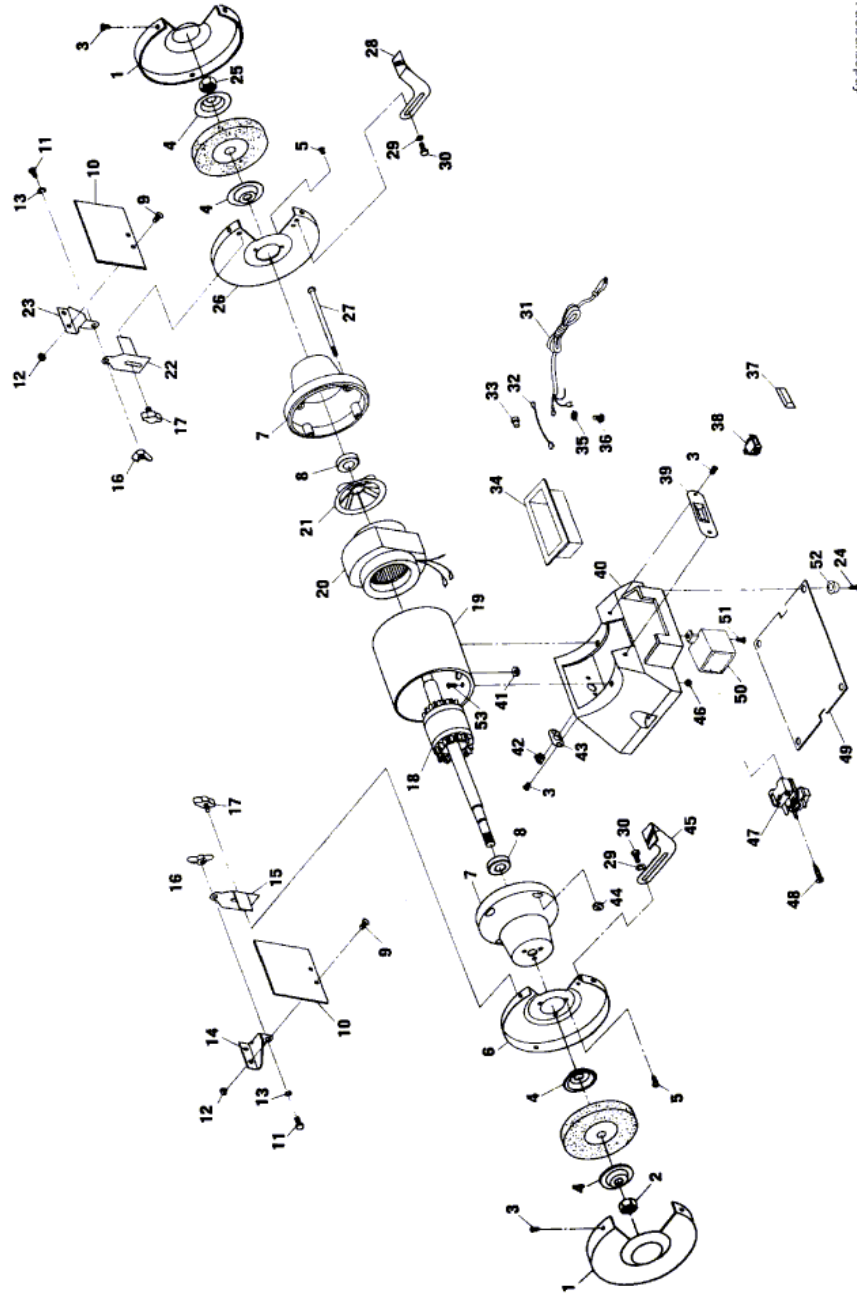


## Bench Grinder - F 012 339 60A - 3396 TYPE 1

Item	Part Number	Description	Illustration	Price	Quantity	Price Group
1	2 610 358 981	Knob	1	-,-	2	-
2	2 610 902 408	Nut	1	-,-	1	-
3	2 610 358 994	Screw	1	-,-	10	-
4	2 610 358 982	Flange	1	-,-	2	-
5	2 610 358 995	Screw	1	-,-	6	-
6	2 610 358 980	End Shield	1	-,-	1	-
7	2 610 358 977	Cover	1	-,-	1	-
8	2 610 902 402	Bearing	1	-,-	2	-
9	2 610 317 010	Screw	1	-,-	4	-
10	2 610 358 992	Guard Plate	1	-,-	2	-
11	2 610 358 819	Screw	1	-,-	2	12
12	2 610 902 410	Nut	1	-,-	4	-
13	2 610 305 957	Washer	1	-,-	2	-
14	2 610 358 991	Spring retaining ring	1	-,-	1	-
15	2 610 358 989	Cover	1	-,-	1	-
16	2 610 902 411	Nut	1	-,-	2	-
17	2 610 358 987	Knob	1	-,-	2	-
18	2 610 358 976	Rotor	1	-,-	1	-
19	2 610 901 649	Stator	1	-,-	1	-
20	2 610 358 975	Stator	1	-,-	1	-
21	2 610 358 993	Fan	1	-,-	1	-
22	2 610 355 988	Shield	1	-,-	1	-
23	2 610 358 990	Spring retaining ring	1	-,-	1	-
24	2 610 358 999	Screw	1	-,-	4	12
25	2 610 902 407	Nut	1	-,-	1	-
26	2 610 358 978	End Shield	1	-,-	1	-
27	2 610 902 403	Screw	1	-,-	4	-
28	2 610 358 985	Support	1	-,-	1	-
29	2 610 023 622	Washer	1	-,-	4	11
30	2 610 902 412	Screw	1	-,-	4	-
31	2 610 902 400	Power supply cord	1	-,-	1	-
32	2 610 902 405	Wiring Harness	1	-,-	1	-
33	2 610 304 943	Connector	1	-,-	1	-

Item	Part Number	Description	Illustration	Price	Quantity	Price Group
34	2 610 902 404	Support Plate	1	-,-	1	-
35	2 610 355 269	Plain Washer	1	-,-	1	15
36	2 610 358 994	Screw	1	-,-	1	-
37	2 610 358 971	Cover	1	-,-	1	-
38	2 615 296 354	On-Off Switch	1	-,-	1	27
39	2 610 358 969	Plate	1	-,-	1	-
40	2 610 911 239	Base	1	-,-	1	-
41	2 610 902 406	Grommet	1	-,-	1	-
42	2 610 068 489	Grommet	1	-,-	1	-
43	2 610 358 974	Plate	1	-,-	1	-
44	2 610 902 409	Nut	1	-,-	4	-
45	2 610 358 986	Support	1	-,-	1	-
46	2 610 011 489	Nut	1	-,-	2	11
47	2 610 358 997	Electronic Module	1	-,-	1	-
48	2 610 358 996	Screw	1	-,-	1	-
49	2 610 358 973	Rubber Bushing	1	-,-	1	-
50	2 610 358 972	Switch Box	1	-,-	1	-
51	2 610 358 995	Screw	1	-,-	1	-
52	2 610 358 998	Grommet	1	-,-	4	-
53	2 610 902 413	Screw	1	-,-	2	-

Illustration - Type E



F01233960A  
Stand }  
Issue } 00-05-22  
**Fig./Abb. 1**

Änderungen vorbehalten  
Modifications reserved  
Modificaciones reservées  
Salvo modificaciones

Information subject to change without further notice.