



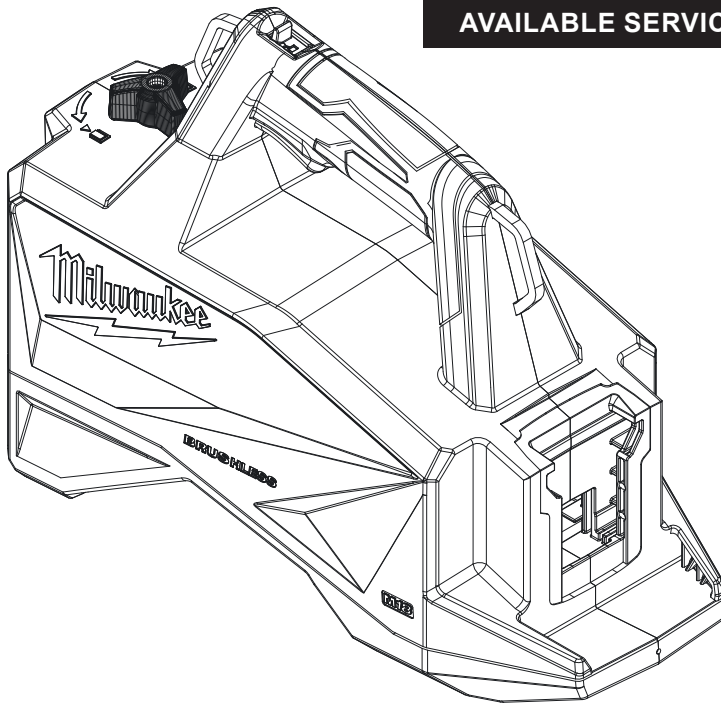
SERVICE PARTS LIST

BULLETIN NO.
PN0003737

SPECIFY CATALOG NO. AND SERIAL NO. WHEN ORDERING PARTS		REVISED BULLETIN	DATE
M18™ Brushless Single Acting Single Speed 60in³ 10,000 PSI HYDRAULIC PUMP			Apr. 2025
CATALOG NO. 3120-20	SERIAL NO. P46A	WIRING INSTRUCTION	

AVAILABLE SERVICE PARTS

PAGE 2



Only maintenance, service, repairs, and replacements of parts as defined in the Operator's Manual can be performed by the user.

All other repairs are to ONLY be performed by personnel authorized by MILWAUKEE TOOL. Do not attempt to install other parts; this COULD void your tool warranty.

For service, parts, or inquiries, contact us:

- Customer Service at 1.800.SAWDUST (1.800.729.3878)
- E-Service tool repair at: www.milwaukeetool.com/e-service
- Find a local authorized MILWAUKEE service location at Milwaukeetool.com
- Find a MILWAUKEE factory Service Center Location or MILWAUKEE factory Central Repair Center at Milwaukeetool.com. Send the following, posted paid and insured:
 - Your name, address, and phone number
 - Description of the issues
 - Copy of the proof of purchase
 - Tool, charger, and batteries involved with the issues

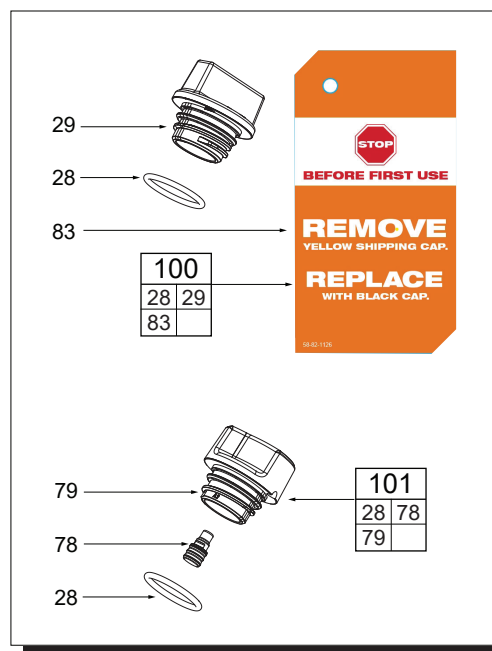
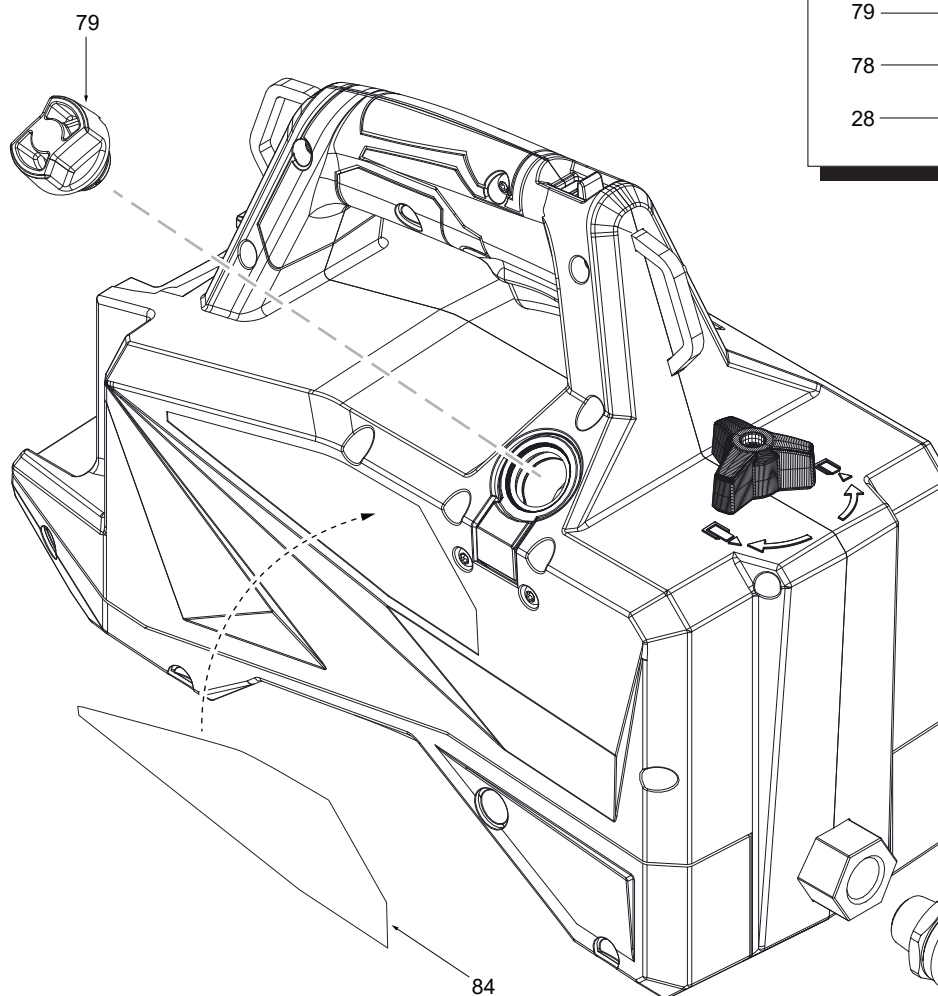
MILWAUKEE factory Central Repair Centers:

MILWAUKEE TOOL
Central Repair
1401 Sycamore Avenue
Greenwood, MS 38930

MILWAUKEE TOOL
Central Repair
2198 Southtech Drive
Greenwood, IN 46143

SERVICE BILL OF MATERIALS (BOM) LISTING

FIG.	PART NO.	DESCRIPTION OF PART	NO. REQ.
4	-----	Coupler	(1)
5	-----	Dust Cap Assembly	(1)
28	-----	O-Ring 19 x 2mm	(1)
29	-----	Shipment Cap (Yellow)	(1)
78	-----	Check Valve 6.5mm	(1)
79	-----	Fill Cap (Black)	(1)
81	-----	Strap (Not Shown)	(1)
83	-----	Hang Tag "Before First Use"	(1)
84	12-20-0579	Service Nameplate	(1)
90	42-90-1001	Coupler Assembly	(1)
100	10-15-0983	Shipment Cap Assembly	(1)
101	14-46-9205	Fill Cap Assembly	(1)



NOTE:

The Yellow Fill Cap is used for shipping purposes only, to prevent any oil leakage. Replace the Yellow Fill Cap with the Black Fill Cap when operating the pump.

