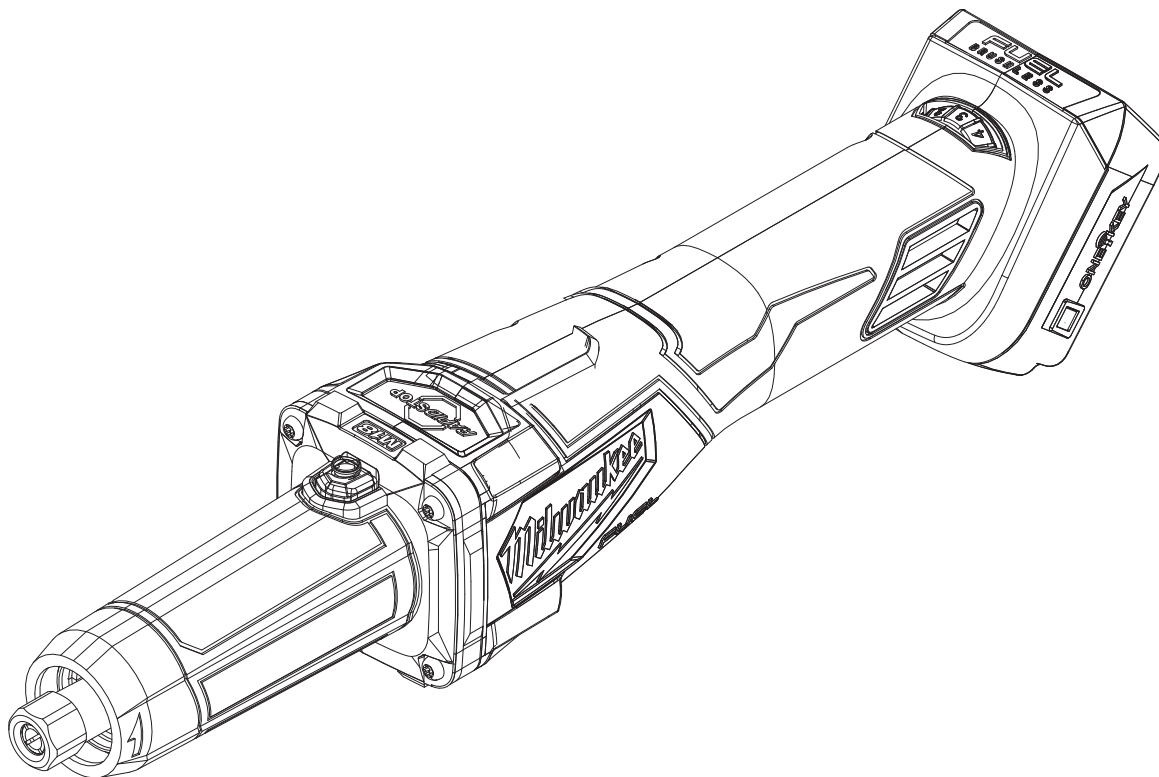




SERVICE PARTS LIST

BULLETIN NO.
54-22-2705

SPECIFY CATALOG NO. AND SERIAL NO. WHEN ORDERING PARTS		REVISED BULLETIN	DATE
M18™ FUEL™ Variable Speed, Braking Die Grinder w/ One Key, Paddle Switch			Nov. 2024
CATALOG NO.	2984-20	SERIAL NO.	N11A
		WIRING INSTRUCTION See Page 3	



Only maintenance, service, repairs, and replacements of parts as defined in the Operator's Manual can be performed by the user.

All other repairs are to ONLY be performed by personnel authorized by MILWAUKEE TOOL. Do not attempt to install other parts; this COULD void your tool warranty.

For service, parts, or inquiries, contact us:

- Customer Service at 1.800.SAWDUST (1.800.729.3878)
- E-Service tool repair at: www.milwaukeetool.com/e-service
- Find a local authorized MILWAUKEE service location at Milwaukeetool.com
- Find a MILWAUKEE *factory* Service Center Location or MILWAUKEE *factory* Central Repair Center at Milwaukeetool.com. Send the following, posted paid and insured:
 - Your name, address, and phone number
 - Description of the issues
 - Copy of the proof of purchase
 - Tool, charger, and batteries involved with the issues

MILWAUKEE *factory* Central Repair Centers:

MILWAUKEE TOOL
Central Repair
1401 Sycamore Avenue
Greenwood, MS 38930

MILWAUKEE TOOL
Central Repair
2198 Southtech Drive
Greenwood, IN 46143

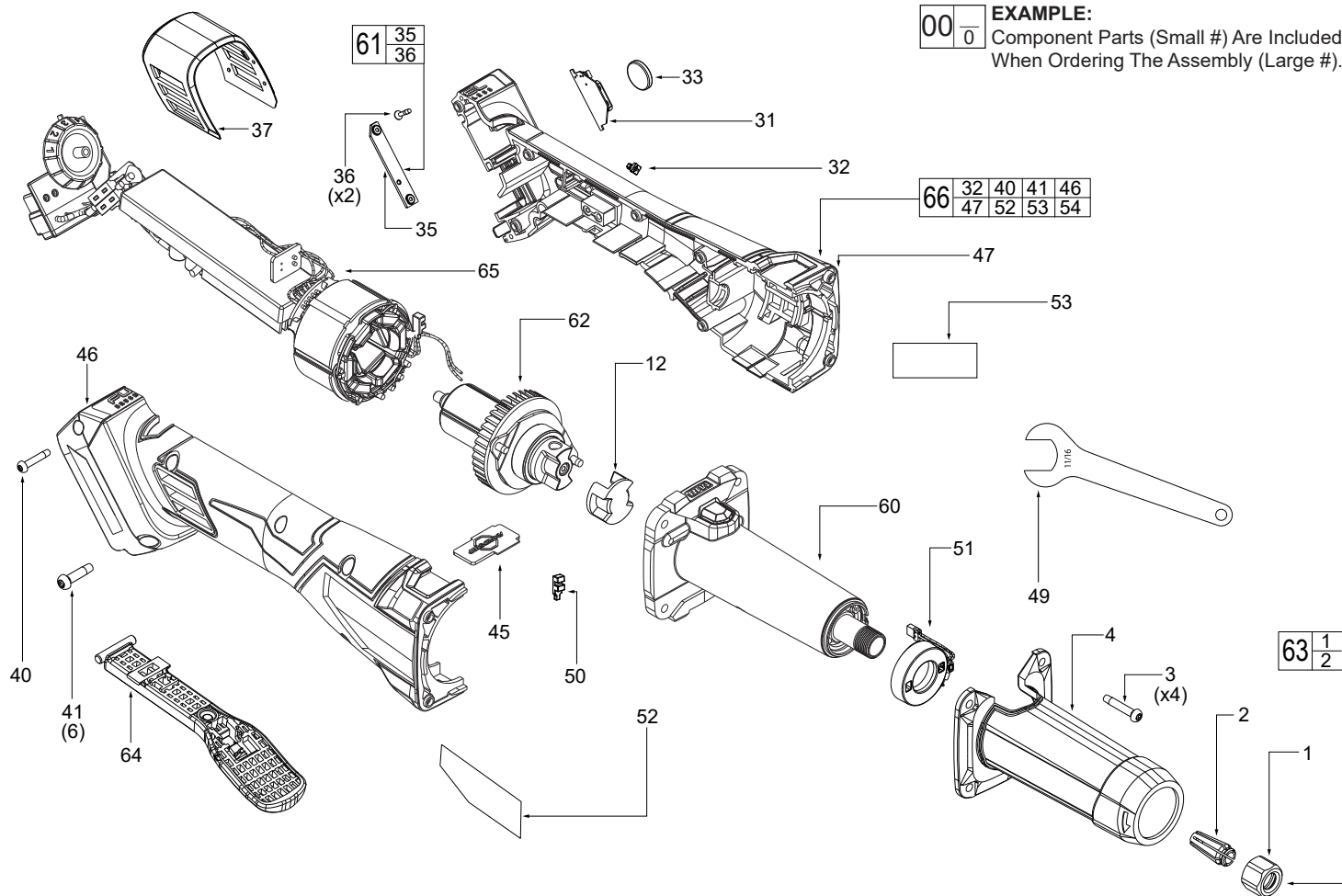


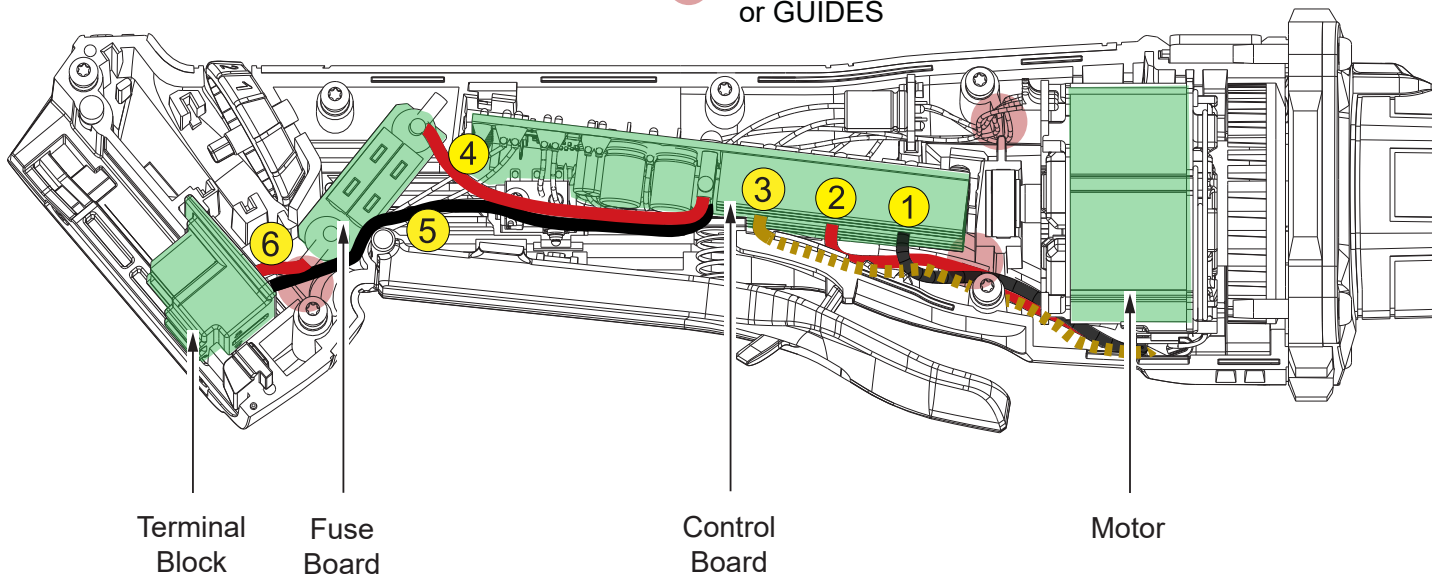
FIG.	PART NO.	DESCRIPTION OF PART	NO. REQ.
1	-----	Collet Nut	1
2	-----	Collet	1
3	05-88-1255	St Screw M3.5x16MM	4
4	31-15-0272	Spindle Housing Cover	1
12	42-90-0024	Coupler	1
31	14-20-0371	Coin Cell Board Assembly	1
32	-----	Led Lens with Pad Printing	1
33	-----	Coin Cell Battery	1
35	-----	Coin Cell Cover	1
36	-----	St Screw M2.6x0.907 FH Phillips	2
37	31-15-0261	Dust Cover	1
40	06-82-1087	St Screw M3.0x1.058 PH Torx T10 B	1
41	06-82-2025	St Screw M3.5x16MM PH B Torx	6
45	28-28-0051	Rapid Stop Plate	1
46	-----	Handle Housing Cover	1
47	-----	Handle Housing Support	1
49	49-96-4090	11/16" Open End Wrench	1
50	-----	Rubber Block	1
51	44-06-0046	Work Light Assembly	1
52	12-20-0586	Service Nameplate	1
53	10-20-1149	Warning Label	1
54	-----	Fuel Dynacase	1
60	28-50-0113	Spindle Housing Assembly	1
61	22-09-0073	Coin Cell Cover Kit	1
62	16-01-0071	Rotor Assembly	1
63	44-40-0091	Collet Nut Assembly	1
64	31-92-0068	Paddle Trigger Assembly	1
65	14-20-0400	Electronic Assembly	1
66	14-38-0326	Housing Kit	1
70	49-92-9000	10PC Die Grinder Kit (Accessory) (Not Shown)	

SCREW TORQUE SPECIFICATIONS				
FIG.	PART NO.	WHERE USED	SEAT TORQUE	
			(kgf-cm)	(lb-in)
3	-----	St Screw M3.5x16MM	16-20	6.1-17.3
19	-----	Taptite Screw M3.5x0.6 T10S	15-18	13-15.6
25	-----	Taptite Screw M2.3x0.907 T8	5-6	4.3-5.2
36	-----	Taptite Screw M2.6x0.907 Philips	4-5	3.4-4.3
40	-----	Taptite Screw M3.0x1.058 T10	3.5-4.5	3-3.9
41	-----	Taptite Screw M3.5x16MM T10	12.5-15.5	10.8-4.3

SERVICE WIRING

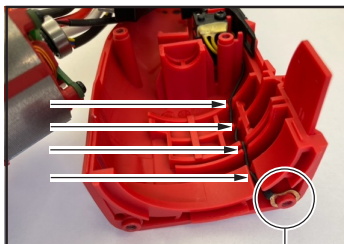
For the sake of clarity, the white wire is represented in gold color in the diagram.

 = WIRE TRAPS or GUIDES



WIRING SPECIFICATIONS

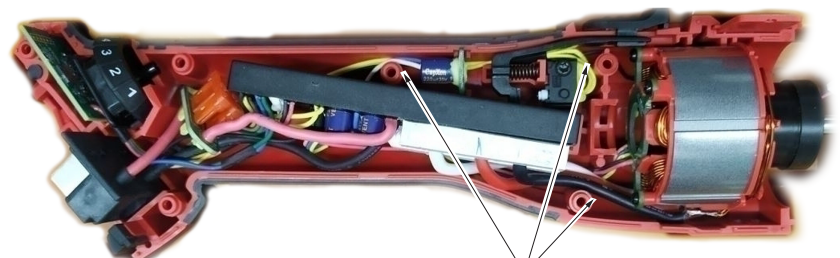
Wire No.	Wire Color	Length	Terminals, Connectors and 1 or 2 End Wire Preparation
1	Black	74 +4/-0	Connect with Motor and Control Board
2	Red	89 +4/-0	Connect with Motor and Control Board
3	White	104 +4/-0	Connect with Motor and Control Board
4	Red	70 +4/-0	Connect with Fuse Board and Control Board
5	Black	100 +4/-0	Connect with Terminal Block and Control Board
6	Red	35 +4/-0	Connect with Terminal Block and Fuse Board



Ground Terminal

Prior to installing the electronics assembly (65) into the housing support (47), place grounding terminal over screw boss as shown. Route ground wire, removing as much slack as possible. Be sure wire is pressed firmly to the back of the wire traps.

Install the electronics assembly as shown. Route wires around screw bosses and into wire traps. Be sure all components are seated squarely and firmly in place. Be sure there is no interference when installing the housing cover (46).



Wire Traps