



SERVICE PARTS LIST

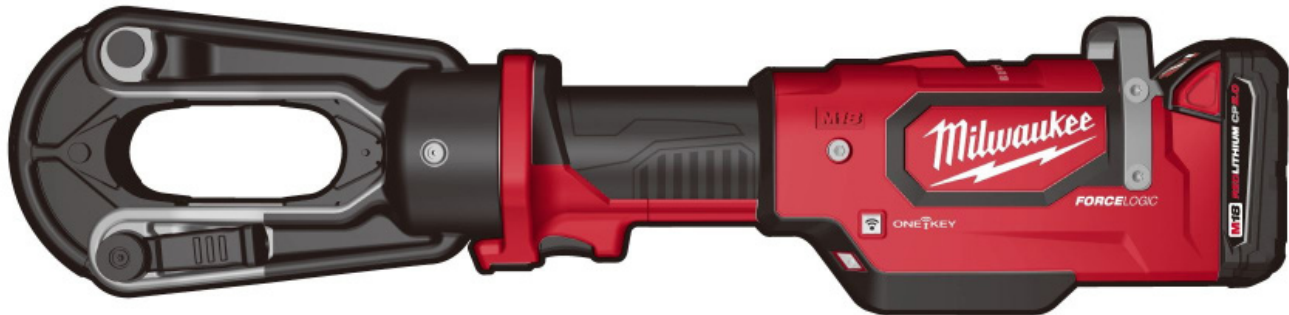
BULLETIN NO.
54-00-2879

SPECIFY CATALOG NO. AND SERIAL NO. WHEN ORDERING PARTS				REVISED BULLETIN	DATE
M18™ FORCE LOGIC™ 15T Crimper					Apr. 2025
CATALOG NUMBER	2879-20	SERIAL NUMBER	K41A K41B	WIRING INSTRUCTION	

AVAILABLE SERVICE PARTS PAGE 2

CRIMPER HEAD SERVICE PARTS PAGE 3

ACCESSORIES PAGE 3



Only maintenance, service, repairs, and replacements of parts as defined in the Operator's Manual can be performed by the user.

All other repairs are to ONLY be performed by personnel authorized by MILWAUKEE TOOL. Do not attempt to install other parts; this COULD void your tool warranty.

For service, parts, or inquiries, contact us:

- Customer Service at 1.800.SAWDUST (1.800.729.3878)
- E-Service tool repair at: www.milwaukeetool.com/e-service
- Find a local authorized MILWAUKEE service location at Milwaukeetool.com
- Find a MILWAUKEE factory Service Center Location or MILWAUKEE factory Central Repair Center at Milwaukeetool.com. Send the following, posted paid and insured:
 - Your name, address, and phone number
 - Description of the issues
 - Copy of the proof of purchase
 - Tool, charger, and batteries involved with the issues

MILWAUKEE factory Central Repair Centers:

MILWAUKEE TOOL
Central Repair
1401 Sycamore Avenue
Greenwood, MS 38930

MILWAUKEE TOOL
Central Repair
2198 Southtech Drive
Greenwood, IN 46143

EXAMPLE:
 Component Parts (Small #)
 Are Included When Ordering
 The Assembly (Large #).

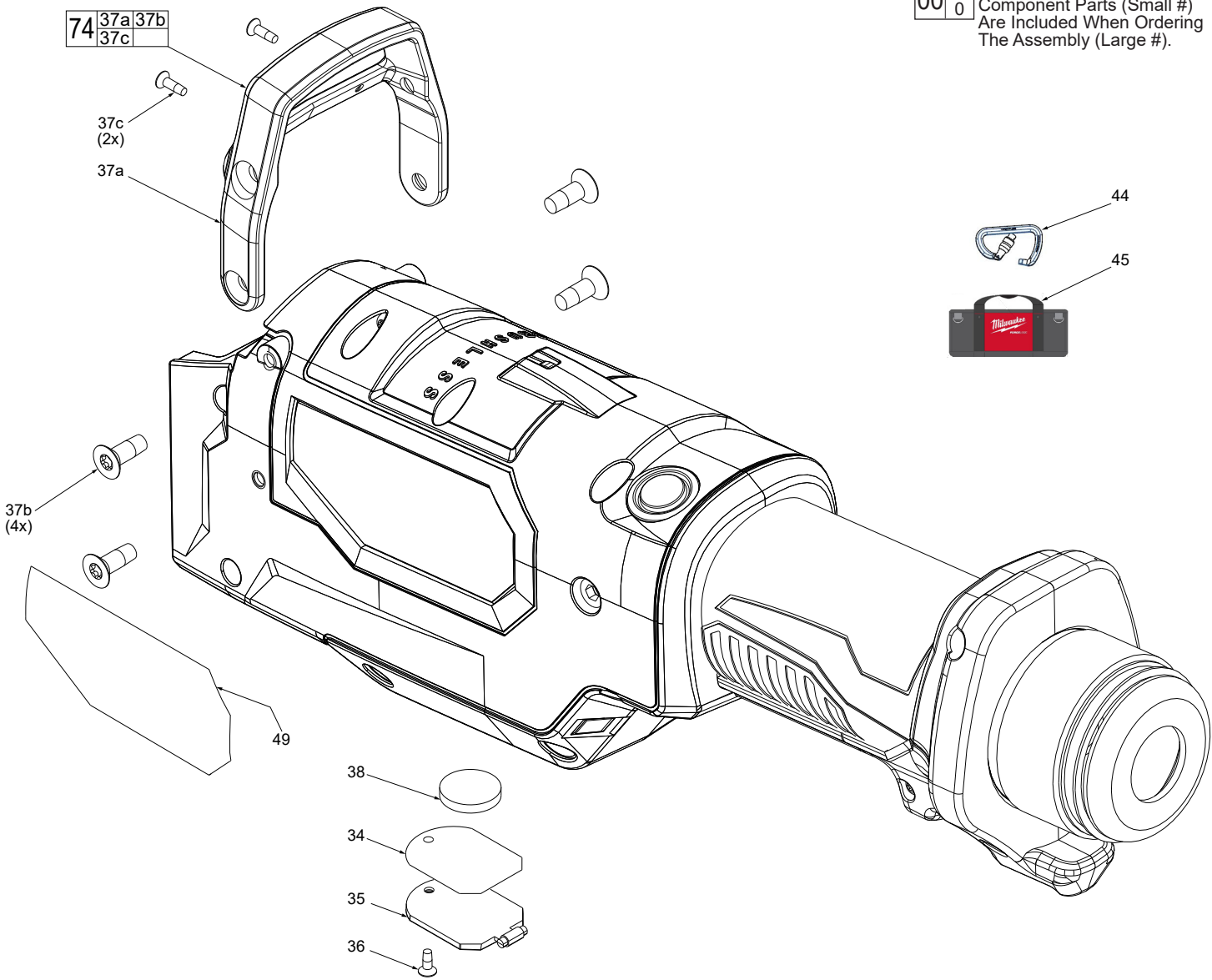


FIG.	PART NO.	DESCRIPTION OF PART	NO. REQ.
34	-----	Rubber Seal	(1)
35	-----	Cell Door	(1)
36	-----	M3 x 1.058mm Fine Hd. T-10 Screw	(1)
37a	-----	Hook Ring	(1)
37b	-----	M6 x 1.814mm Fine Hd. T-30 Screw	(4)
37c	-----	M3 x 1.058mm C Hd. Screw	(2)
38	-----	Battery Cell	(1)
44	42-70-0027	Carabiner	(1)
45	48-22-8280	Tool Bag	(1)
49	12-20-0208	Service Nameplate	(1)
74	44-90-0047	Hook Ring Assembly	(1)

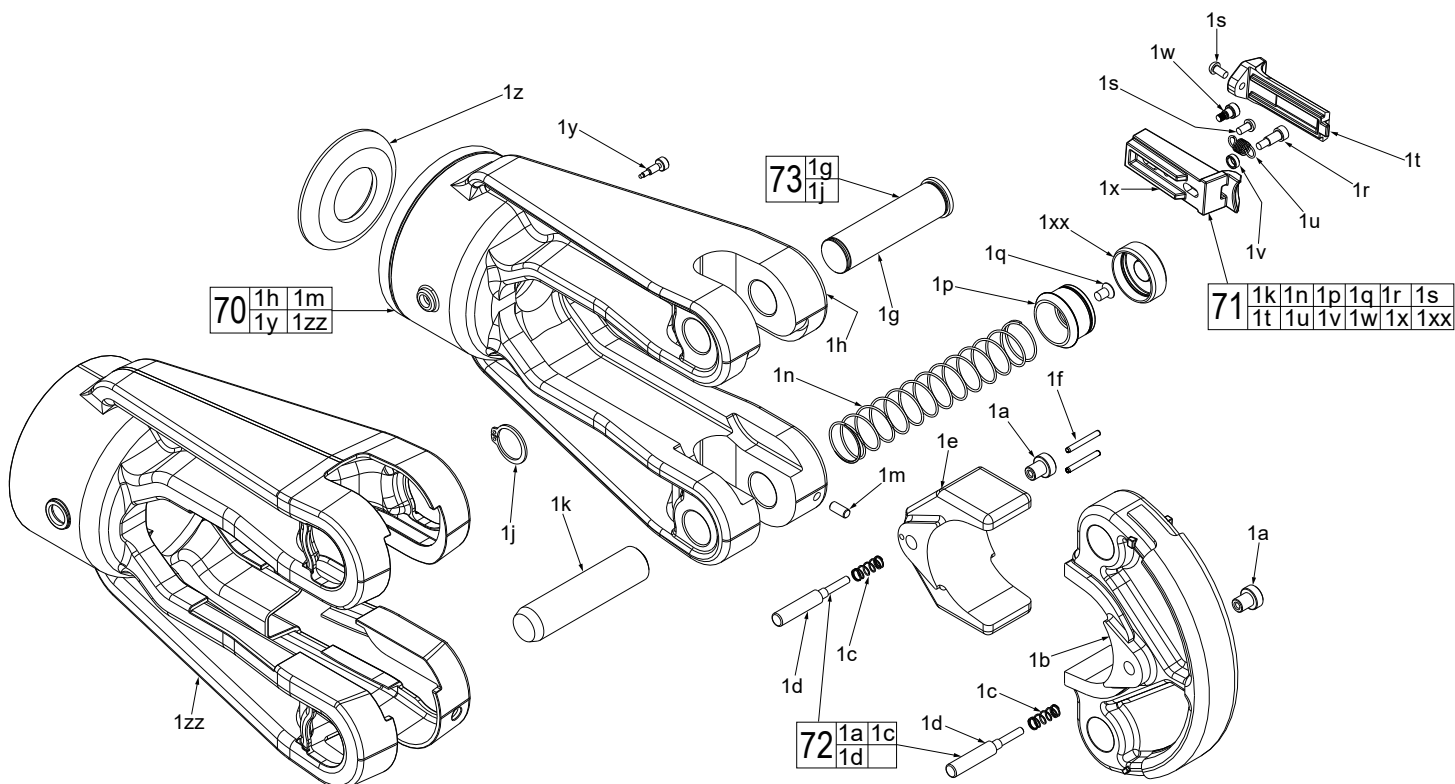


FIG.	PART NO.	DESCRIPTION OF PART	NO. REQ.
1a	-----	Die Holder Stop Ring	(2)
1b	-----	Nest	(1)
1c	-----	Die Spring Pin	(2)
1d	-----	Die Holder Pin	(2)
1e	-----	Spring Pin	(1)
1f	-----	Roll Pin	(2)
1g	-----	Clevis Pin	(1)
1h	-----	Clevis	(1)
1j	44-86-0042	Retaining Ring	(1)
1k	-----	Fixed Pin	(1)
1m	-----	Retention Pin	(1)
1n	-----	Compression Spring	(1)
1p	-----	Spring Cap Pin	(1)
1q	-----	M4 X 0.7mm Pan Hd. T-20 Machine Screw	(1)
1r	-----	Shoulder Screw	(1)

FIG.	PART NO.	DESCRIPTION OF PART	NO. REQ.
1s	-----	M3 x 0.5mm Pan Hd. T-10 Screw	(2)
1t	-----	Pin Release Cover	(1)
1u	-----	Extension Spring	(1)
1v	-----	Spacer	(1)
1w	-----	Shoulder Screw	(1)
1x	-----	Pin Release Bottom	(1)
1xx	-----	Spring Cap Cover	(1)
1y	-----	Rotation Stop Screw	(1)
1z	-----	Stop Ring	(1)
1zz	45-12-0016	Rubber Boot	(1)
70	28-25-0021	Clevis w/ Pin Kit	(1)
71	44-60-0079	Pin Release Kit	(1)
72	44-86-0013	Die Retention Assembly Kit	(1)
73	43-64-0017	Fixed Pin Assembly Kit	(1)

Accessories:

FIG.	PART NO.	DESCRIPTION OF PART	NO. REQ.
47a	-----	Die Adapter Holder	(1)
47b	-----	Spring	(1)
47c	-----	P to U Die Adapter	(1)
47d	-----	Adapter Release Button	(1)
47e	-----	Roll Pin	(1)
81	49-15-PUAD	15T PU Die Adapter	(1)

