

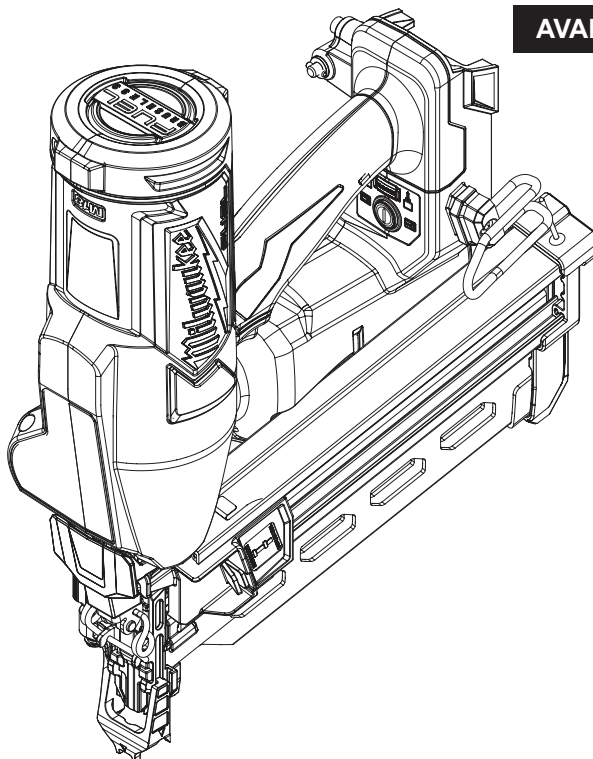


## SERVICE PARTS LIST

BULLETIN NO.  
54-00-2840

SPECIFY CATALOG NO. AND SERIAL NO. WHEN ORDERING PARTS		REVISED BULLETIN	DATE
<b>M18 FUEL™ Duplex NAILER</b>			June 2024
CATALOG NO. <b>2844-20</b>	SERIAL NO. <b>P05A</b>	WIRING INSTRUCTION	

AVAILABLE SERVICE PARTS PAGE 2



Only maintenance, service, repairs, and replacements of parts as defined in the Operator's Manual can be performed by the user.

All other repairs are to ONLY be performed by personnel authorized by MILWAUKEE TOOL. Do not attempt to install other parts; this COULD void your tool warranty.

### For service, parts, or inquiries, contact us:

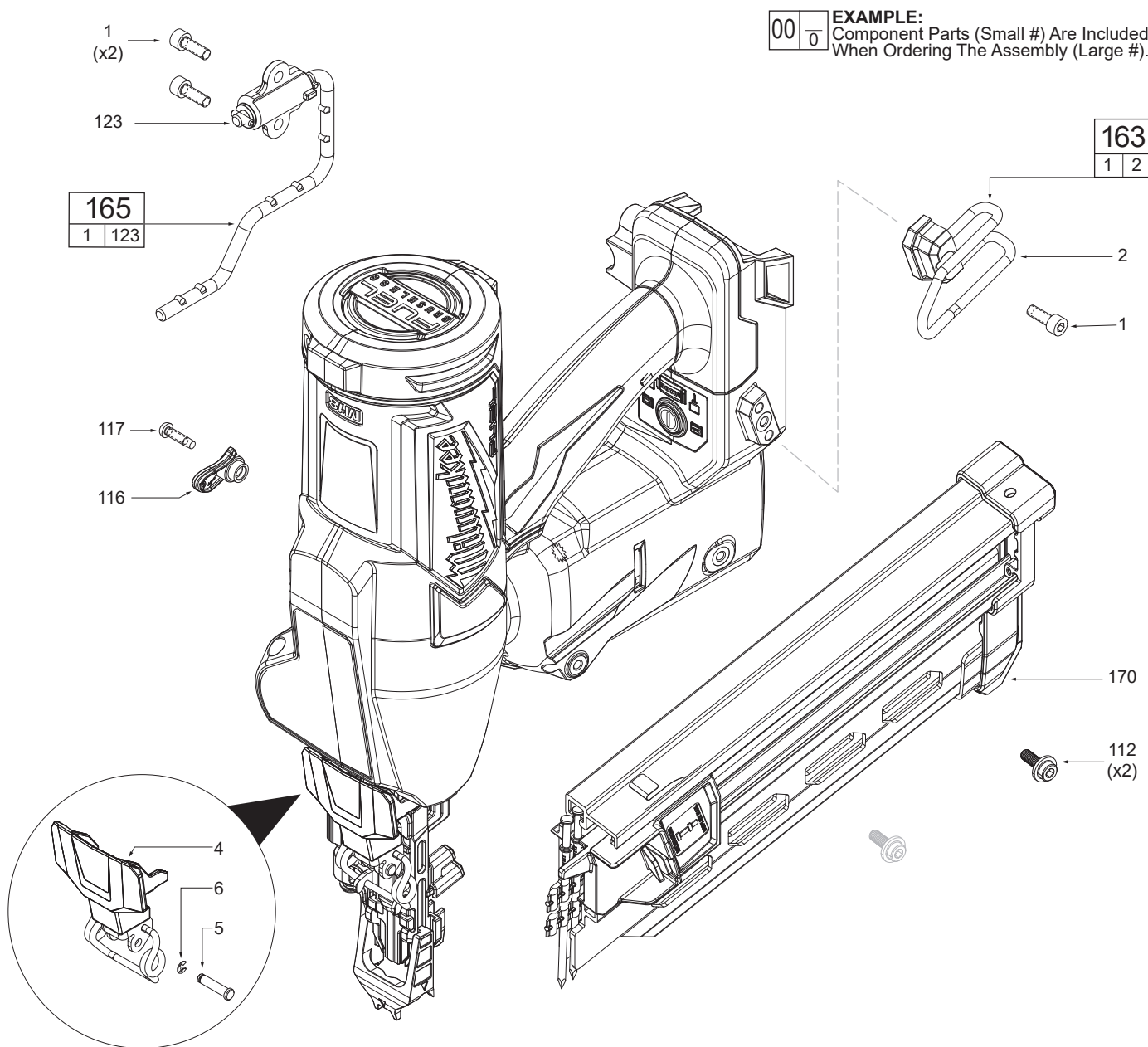
- Customer Service at 1.800.SAWDUST (1.800.729.3878)
- E-Service tool repair at: [www.milwaukeetool.com/e-service](http://www.milwaukeetool.com/e-service)
- Find a local authorized MILWAUKEE service location at [Milwaukeetool.com](http://Milwaukeetool.com)
- Find a MILWAUKEE factory Service Center Location or MILWAUKEE factory Central Repair Center at [Milwaukeetool.com](http://Milwaukeetool.com). Send the following, posted paid and insured:
  - Your name, address, and phone number
  - Description of the issues
  - Copy of the proof of purchase
  - Tool, charger, and batteries involved with the issues

### MILWAUKEE factory Central Repair Centers:

MILWAUKEE TOOL  
Central Repair  
1401 Sycamore Avenue  
Greenwood, MS 38930

MILWAUKEE TOOL  
Central Repair  
2198 Southtech Drive  
Greenwood, IN 46143

# SERVICE BILL OF MATERIAL LISTING



**EXAMPLE:**  
Component Parts (Small #) Are Included  
When Ordering The Assembly (Large #).

FIG.	PART NO.	DESCRIPTION OF PART	NO. REQ.
1	05-74-0019	Hook Mount Screw	(3)
2	-----	Belt Hook	(1)
4	44-20-0001	Complete Latch Assembly	(1)
5	44-60-1024	Latch Pin	(1)
6	44-90-1004	E-Ring, ETW-2.5	(1)
24	-----	Duplex Spiker	(1)
25	42-70-0550	E-Ring, ETW-5	(1)
26	-----	Depth Adjust Knob Assy	(1)
112	05-74-0021	M5 x 14mm Flanged Socket Head Cap Screw	(2)
116	31-94-0001	Valve Access Door	(1)
117	06-82-0211	M4 x 16mm Pan Hd. T-20 B ST Screw	(1)
123	-----	Rafter Hook Assy	(1)
136	10-22-0529	Warning Label (Not Shown)	(1)
137	10-22-0528	Warning Label (Not Shown)	(1)
138	12-20-1196	Service Nameplate (Not Shown)	(1)
161	40-50-2844	Constant Force Spring Service Assembly	(1)
163	42-70-0024	Belt Hook Service Assembly	(1)
165	42-70-0139	Rafter Hook Service Assembly	(1)
170	43-40-0071	Magazine and Pusher Service Assembly	(1)
171	44-14-2844	Depth Adjust Knob Service Assembly	(1)

