



SERVICE PARTS LIST

BULLETIN NO.
54-37-2725

SPECIFY CATALOG NO. AND SERIAL NO. WHEN ORDERING PARTS		REVISED BULLETIN	DATE
M18 FUEL™ Router			May 2024
CATALOG NO.	2838-20	WIRING INSTRUCTION	
SERIAL NO.	N55A	See Page 3	

SCREW TORQUE SPECIFICATIONS

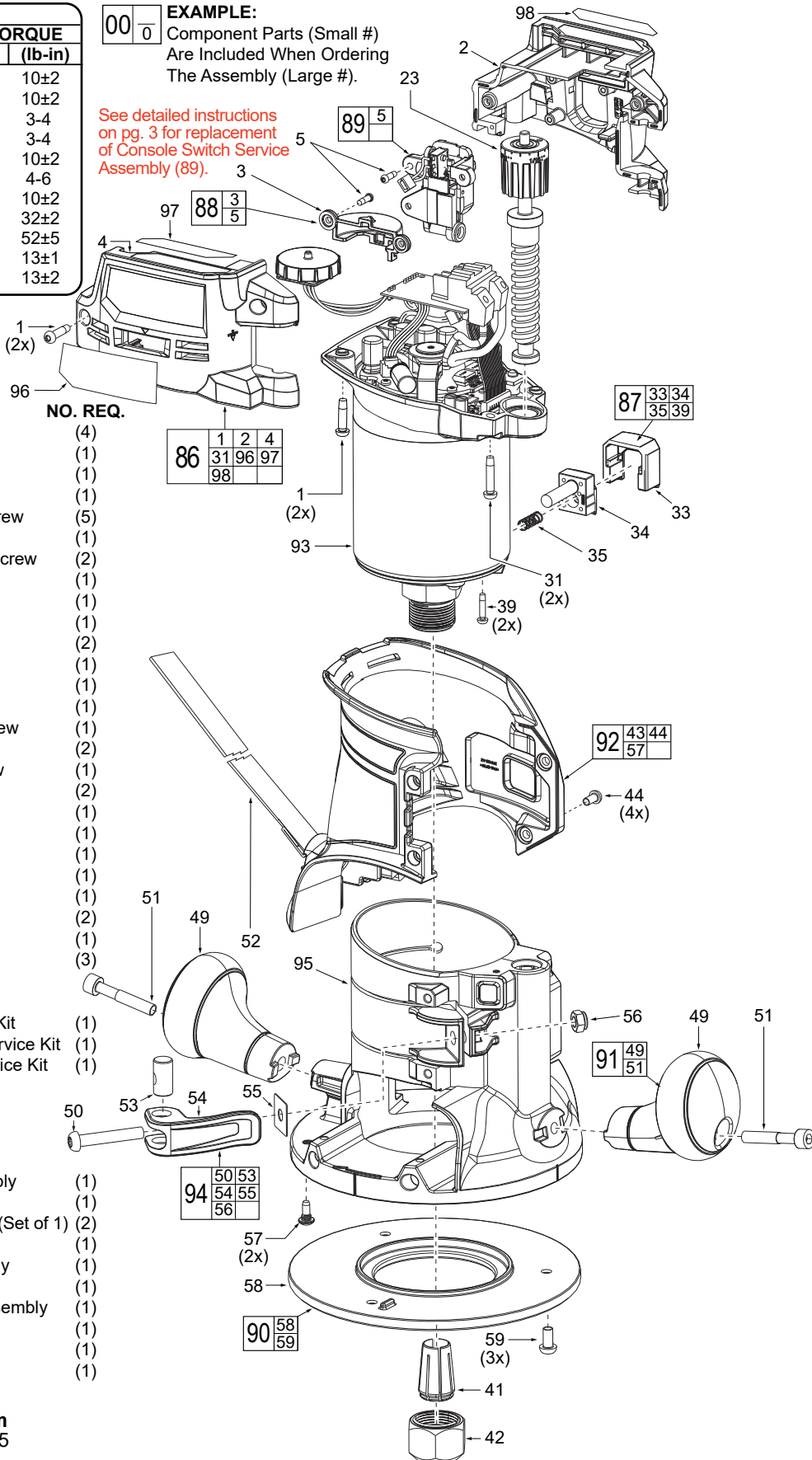
FIG.	PART NO.	WHERE USED	SEAT TORQUE	
			(kgf-cm)	(lb-in)
1	-----	Housing Cover/Support	12±2	10±2
	-----	Motor Housing	12±2	10±2
5	-----	Console Switch Assy.	4-5	3-4
	-----	Speed Dial Cover	4-5	3-4
31	-----	Motor Housing	12±2	10±2
39	-----	Spindle Lock	5-7	4-6
44	-----	Rubber Boot	12±2	10±2
50	-----	Cam Lock	37±2	32±2
51	-----	Pommels	60±5	52±5
57	-----	Fixed Base Assy.	15±1	13±1
59	-----	Fixed Base Plate	15±2	13±2

EXAMPLE:

00 0
Component Parts (Small #)
Are Included When Ordering
The Assembly (Large #).

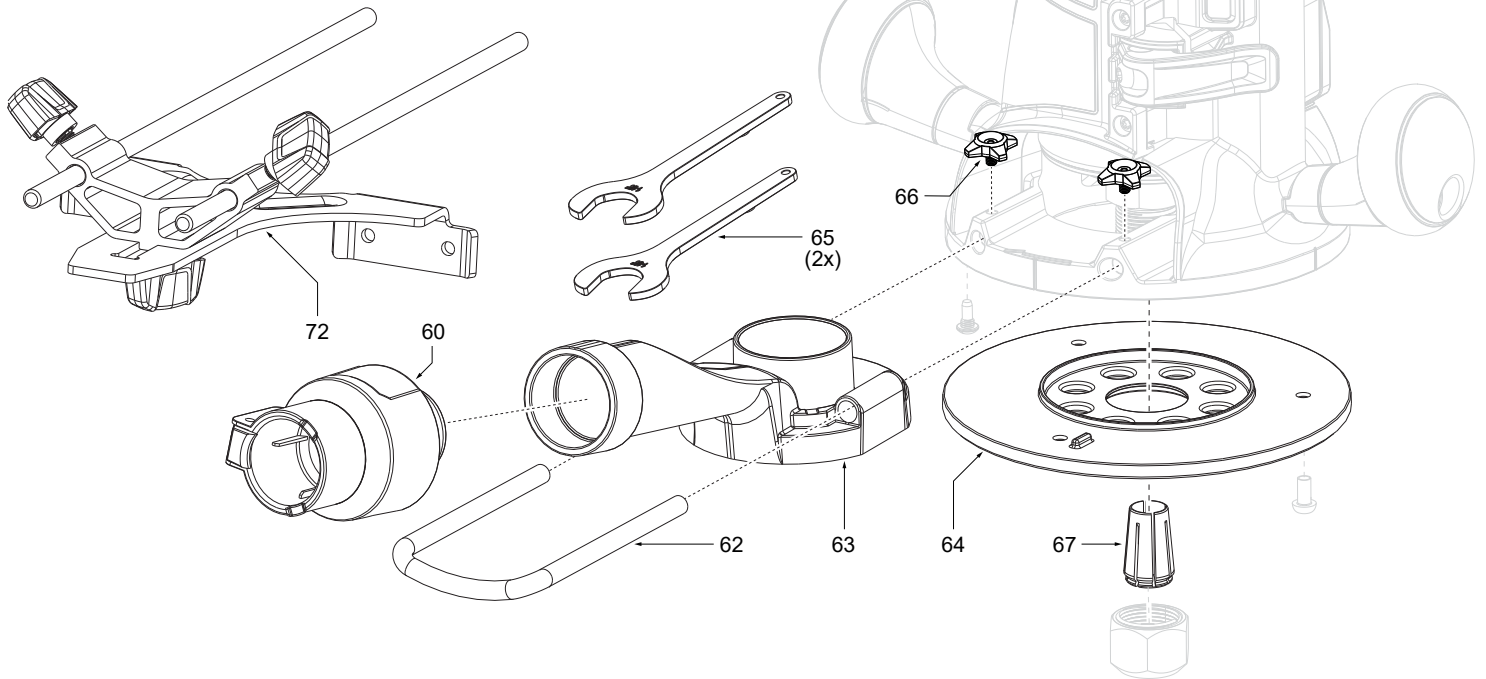
See detailed instructions
on pg. 3 for replacement
of Console Switch Service
Assembly (89).

FIG.	PART NO.	DESCRIPTION OF PART	NO. REQ.
1	-----	M4 x 1.4 Pan Hd. T-15 Screw	(4)
2	-----	Router Handle Cover	(1)
3	-----	Speed Dial Cover	(1)
4	-----	Router Handle Support	(1)
5	-----	M5 x 1.058 Pan Hd Torx T-8 Screw	(5)
23	45-08-0051	Height Adjustment Assembly	(1)
31	-----	M4 x 1.411 Pan Hd. Torx T-20 Screw	(2)
33	-----	Spindle Lock Spring	(1)
34	-----	Spindle Lock Button	(1)
35	-----	Spindle Lock Housing	(1)
39	-----	M3 x 14 Screw	(2)
41	48-66-1010	1/2" Collet	(1)
42	44-40-0095	Collet Nut	(1)
43	-----	Rubber Boot Assembly	(1)
44	-----	M4 x 0.7 Pan Hd. Torx T-20 Screw	(1)
49	-----	Fixed Base Pommel	(2)
50	-----	M6 x 1 Pan Hd. Torx T-30 Screw	(1)
51	-----	M6 x 1 Hex Screw	(2)
52	45-56-0023	Strap	(1)
53	-----	Cam Lock Pin	(1)
54	-----	Cam Locking Lever	(1)
55	-----	Wear Plate	(1)
56	-----	M6 Nylon Nut	(1)
57	-----	Threaded Pin	(2)
58	-----	Fixed Base Plate	(1)
59	-----	M5 x 0.8 Screw	(3)
86	31-44-0251	Motor Housing Handle Service Kit	(1)
87	38-50-0126	Motor Housing Spindle Lock Service Kit	(1)
88	43-98-0118	Console Speed Dial Cover Service Kit	(1)
89	23-66-0219	Console Switch Service Assembly	(1)
90	43-76-0081	Sub Base Service Kit	(1)
91	31-44-0464	Fixed Base Pommel Service Kit (Set of 1)	(2)
92	45-12-0126	Fixed Base Boot Service Kit	(1)
93	28-50-0024	Motor Housing Service Assembly	(1)
94	22-33-0108	Clamp Lever Service Kit	(1)
95	28-06-0019	Fixed Base Casting Service Assembly	(1)
96	12-20-0427	Service Nameplate	(1)
97	10-22-0002	Warning Label (Spanish)	(1)
98	10-22-0001	Warning Label (French)	(1)



SERVICE PARTS EXPLODED VIEW - continued

FIG.	PART NO.	DESCRIPTION OF PART	QTY.
60	43-76-0059	Universal Vacuum Adaptor	(1)
62	42-04-0017	Dust Port Bracket	(1)
63	44-90-0044	Dust Collection Duct	(1)
64	22-33-0022	1-3/16" Templating Base	(1)
65	45-96-0032	1-1/8" Collet Wrench	(2)
66	28-50-0117	Adjustment Knob	(2)
67	48-66-0985	1/4" Collet	(1)
72	42-36-0090	Edge Guide Assembly	(1)

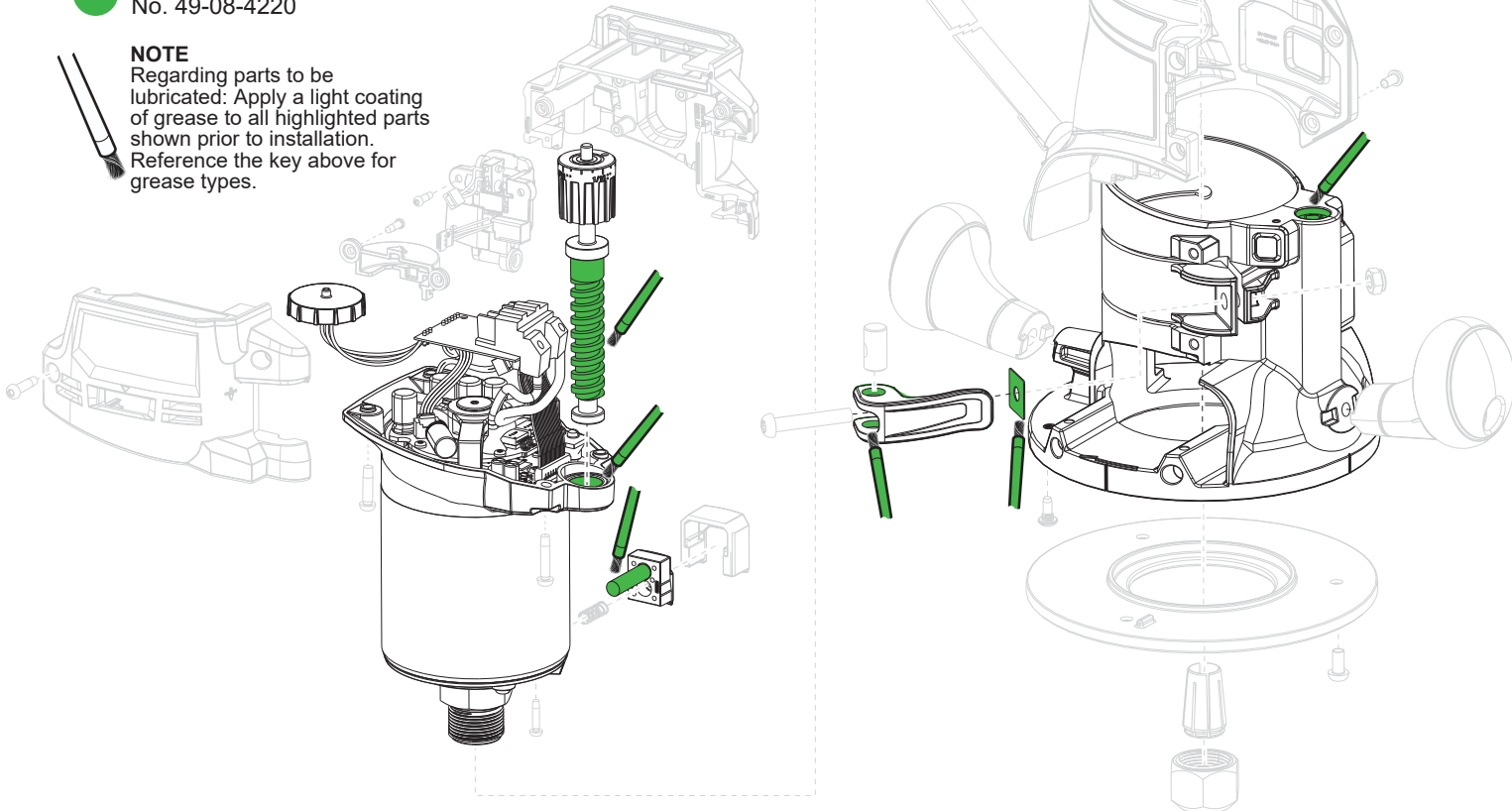


LUBRICATION INSTRUCTIONS

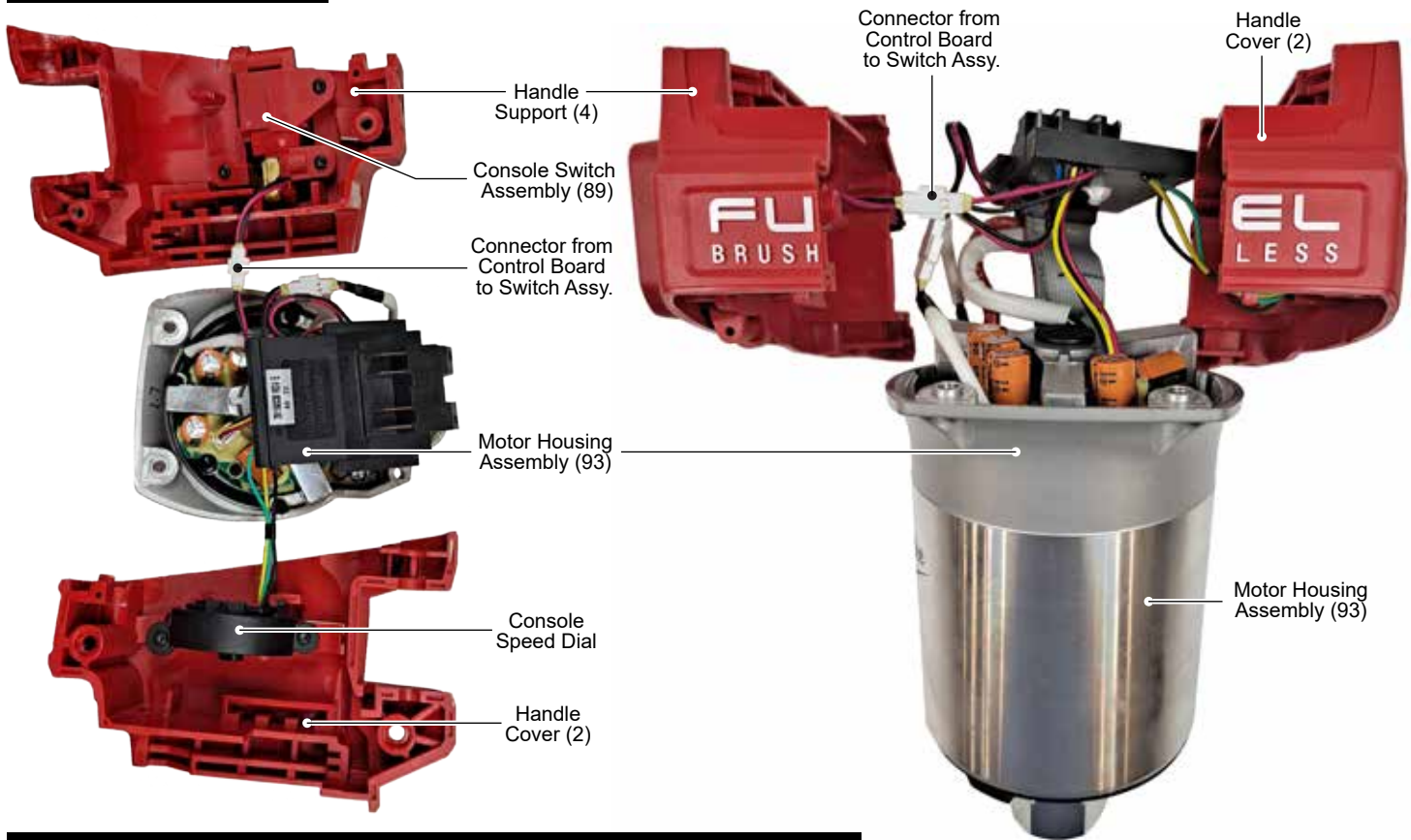
● Type "J" Grease,
No. 49-08-4220

NOTE

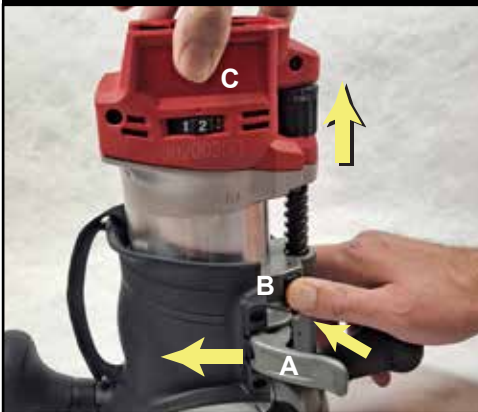
Regarding parts to be lubricated: Apply a light coating of grease to all highlighted parts shown prior to installation. Reference the key above for grease types.



WIRING DIAGRAM



CONSOLE SWITCH ASSEMBLY REPLACEMENT INSTRUCTIONS



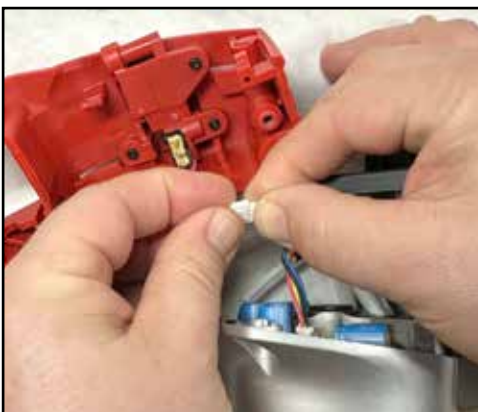
Push the Cam locking lever (A) to the left to unlock the Motor Housing from the Handle Assembly. Push in Spindle Lock Button (B) while pulling up Motor Housing (C) until completely separated from base.



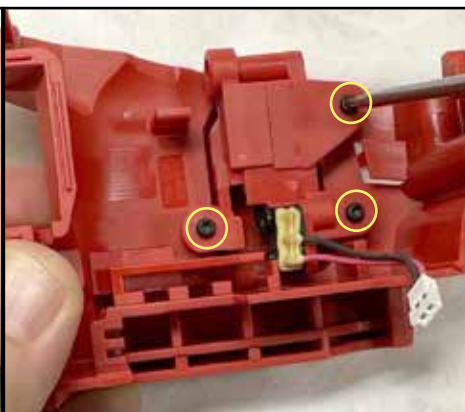
Remove the two M4 T-15 and two M4 T-20 torx screws from underneath the handle/electronics to separate the Handle/Electronics from the Motor Housing.



Remove the two M4 T-15 torx screws from the side of the handle cover to separate the handle cover and handle support.



Grasp the switch connector with both thumbs and forefingers and pull apart to separate the handle support/switch assembly from the control board.



Remove the three M3 T-8 torx screws to separate the switch assembly from the handle support.



Replace with a new console switch service assembly (23-66-0219). Reassemble by reconnecting wires and following directions in reverse order.

PLUNGE BASE ASSEMBLY. 48-10-2838

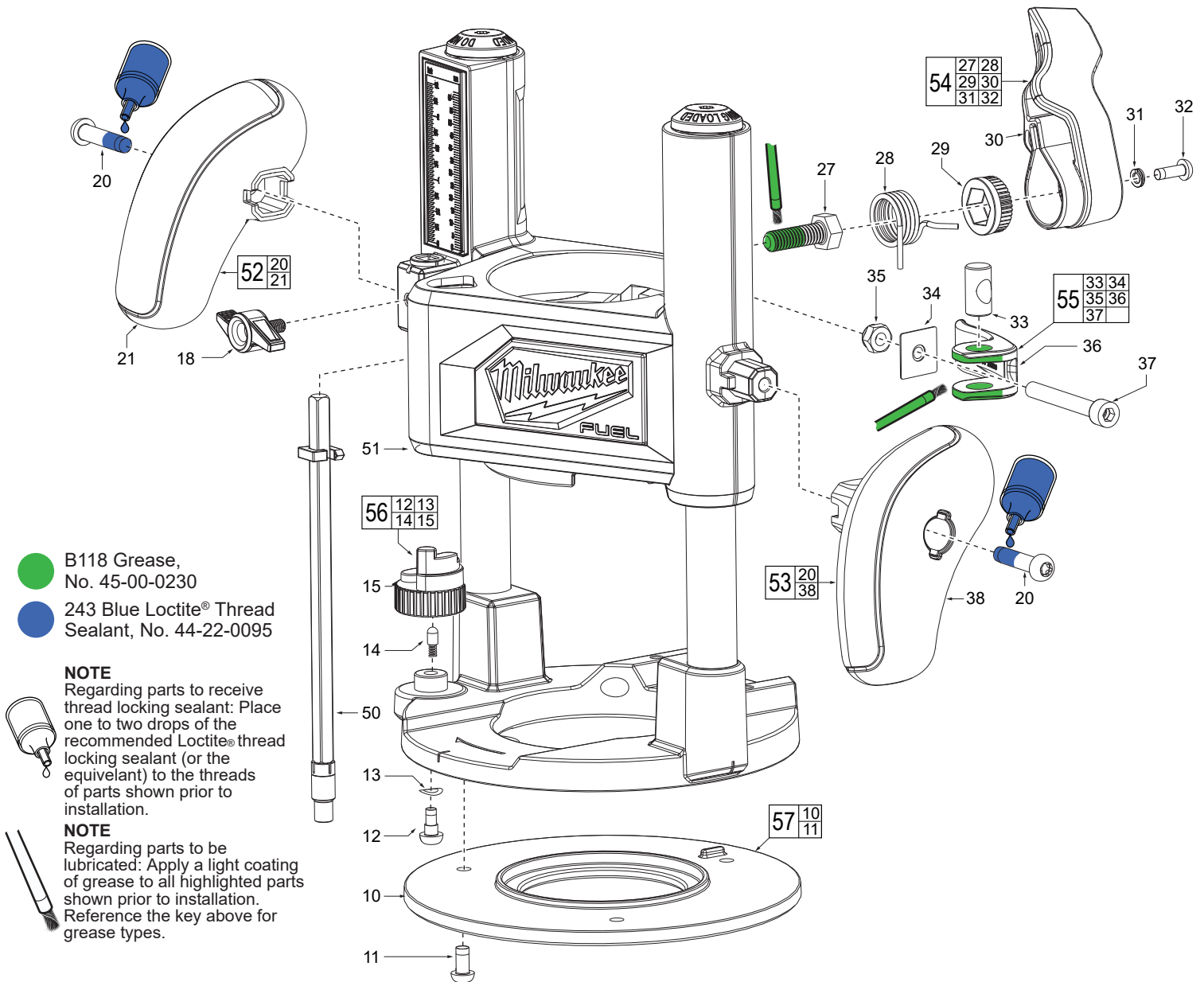


FIG.	PART NO.	DESCRIPTION OF PART	QTY.
10	-----	Sub Base	(1)
11	-----	M5 x .8 PH T-25 Screw	(3)
12	-----	M4 x 10mm PH T-25 Screw	(1)
13	-----	Curved Washer	(1)
14	-----	Spring & Cover Assy.	(1)
15	-----	Depth Turret	(1)
16	-----	Fine Adjustment Knob	(1)
17	-----	Rubber O-Ring	(1)
18	43-98-0101	2 Nub Knob	(1)
19	-----	Depth Stop Rod	(1)
20	-----	M6 x 1 CH T30 Screw	(2)
21	-----	Left Handle	(1)
24	-----	Scale Pointer	(1)
27	-----	M8 x 23mm Brass Screw	(1)
28	-----	Plunge Lock Spring	(1)
29	-----	Screw Cap	(1)
30	-----	Plunge Lock Lever	(1)
31	-----	Spring Washer	(1)
32	-----	#8-32 PH T-20 Screw w/Nylok	(1)
33	-----	Cam Lock Pin	(1)
34	-----	Wear Plate	(1)
35	-----	M6 Nylon Insert Nut	(1)
36	-----	Cam Lock Handle	(1)
37	-----	M6 x 45mm Hex Screw w/Nylok	(1)

FIG.	PART NO.	DESCRIPTION OF PART	QTY.
38	-----	Right Handle	(1)
39	12-25-0579	Nameplate (Not Shown)	(1)
50	31-17-0198	Depth Rod Service Assembly	(1)
51	14-46-0350	Plunge Base Casting Service Assembly	(1)
52	31-44-0467	Left Handle Service Kit	(1)
53	31-44-0468	Right Handle Service Kit	(1)
54	44-10-0111	Lock Lever Service Kit	(1)
55	44-10-0112	Cam Lock Lever Service Kit	(1)
56	42-46-0266	Turret Service Kit	(1)
57	43-76-0082	Sub Base Service Kit	(1)

SCREW TORQUE SPECIFICATIONS				
FIG.	PART NO.	WHERE USED	SEAT TORQUE	
			(kgf-cm)	(lb-in)
11	-----	Sub Base Assy	12-16	10-14
12	-----	Turret	5-7	4-6
20	-----	Handles	35-45	30-39
27	-----	Lock Lever	8-12	7-10
32	-----	Lock Lever	16-20	14-17
37	-----	Cam Lock Lever	35-43	30-37

GUIDE RAIL ADAPTOR ASSEMBLY, 48-11-2838

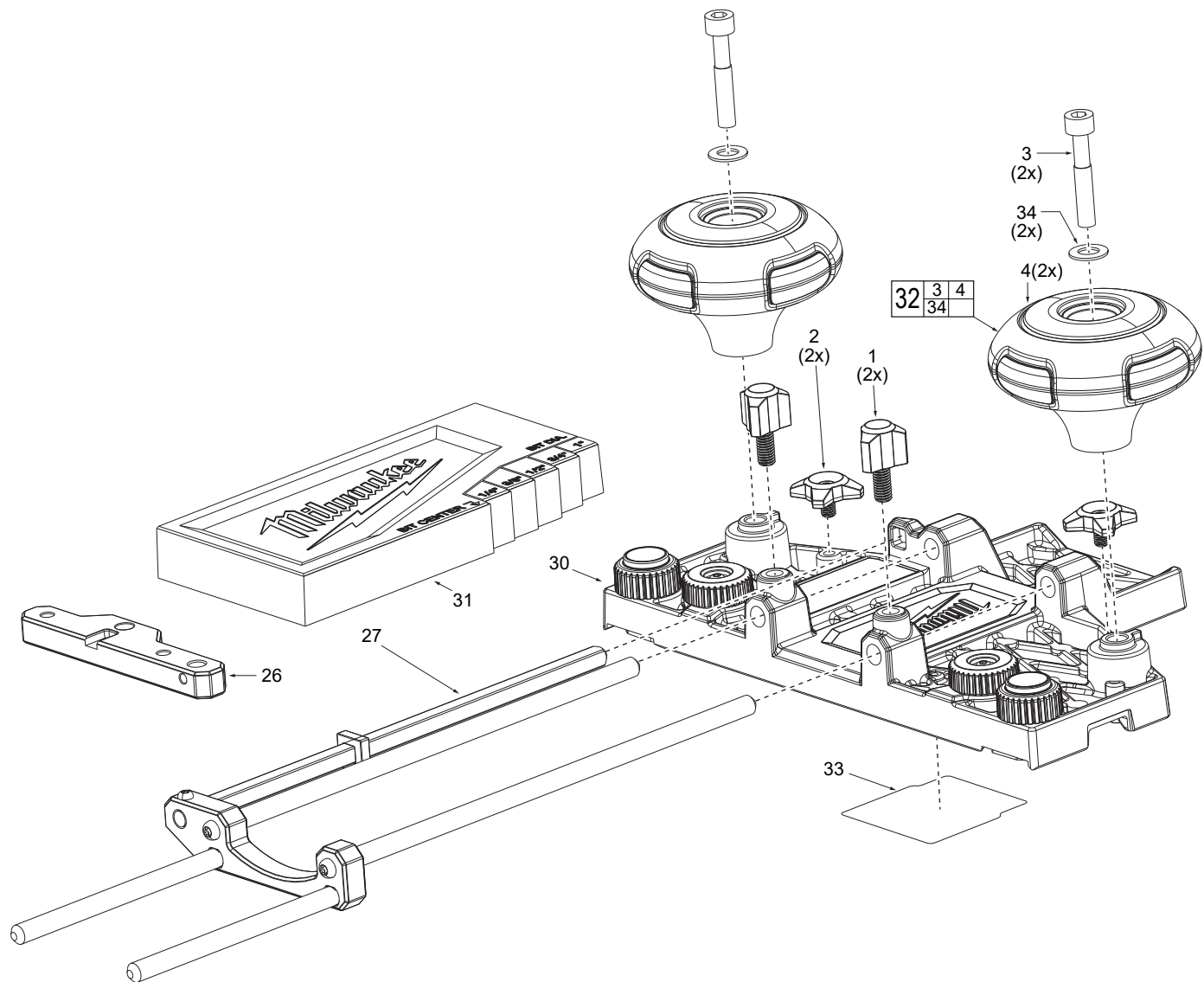


FIG.	PART NO.	DESCRIPTION OF PART	QTY.
1	31-86-0018	Thumb Knob	(2)
2	28-50-0117	Dust Collection Knob	(2)
3	-----	M6 x 35mm Hex Screw	(2)
4	-----	Round Handle	(2)
26	42-04-0033	Compact Router Adapter Plate	(1)
27	44-94-0292	Rod Service Assembly	(1)
30	31-06-0128	Base Service Assembly	(1)
31	43-82-0017	Gauge Block	(1)
32	31-44-0466	Pommel Service Kit (Set of 1)	(2)
33	12-20-0733	Service Nameplate	(1)
34	-----	Washer	(2)

SCREW TORQUE SPECIFICATIONS				
FIG.	PART NO.	WHERE USED	SEAT TORQUE	
			(kgf-cm)	(lb-in)
3	-----	Pommel (Handles)	40±2	35±2