



## SERVICE PARTS LIST

BULLETIN NO.  
54-38-2610

SPECIFY CATALOG NO. AND SERIAL NO. WHEN ORDERING PARTS		REVISED BULLETIN	DATE
<b>M18 FUEL™ 5" Random Orbital SANDER</b>			Aug. 2024
CATALOG NO.	2837-20	SERIAL NO.	P35A
		WIRING INSTRUCTION See Page 2-3	

**EXAMPLE:**  
00 0 Component Parts (Small #)  
Are Included When Ordering  
The Assembly (Large #).

### FIG. NOTES

46,47 A clean, dry surface is essential for proper performance for any adhesive system. Area intended for application of any adhesive label or nameplate must be prepared by cleaning with isopropyl alcohol. The solvent is to be applied with a clean, lint free applicator and the surface allowed to dry before applying the label or nameplate.

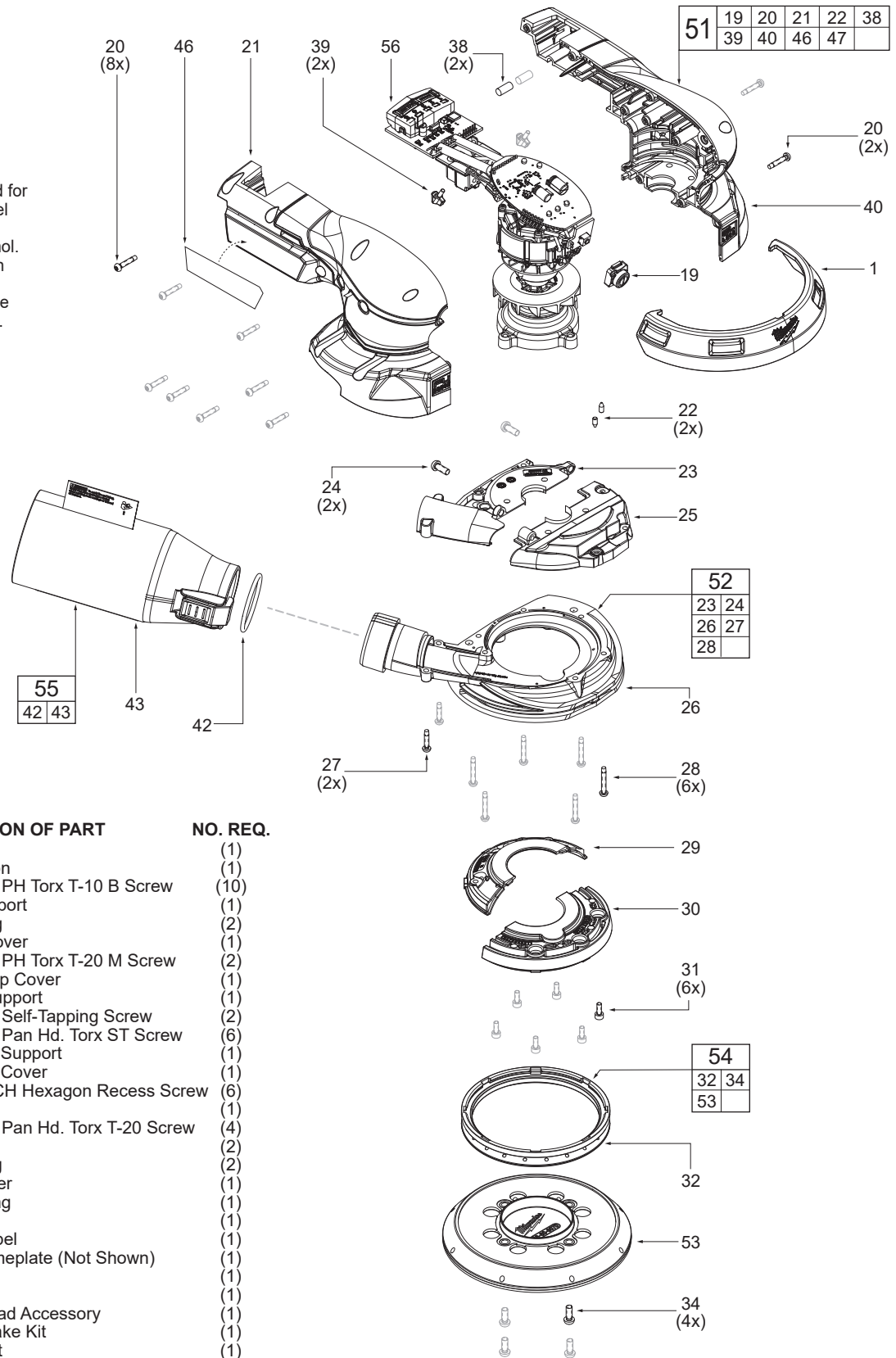
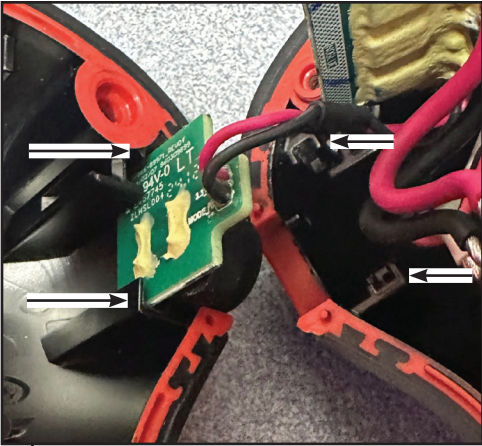
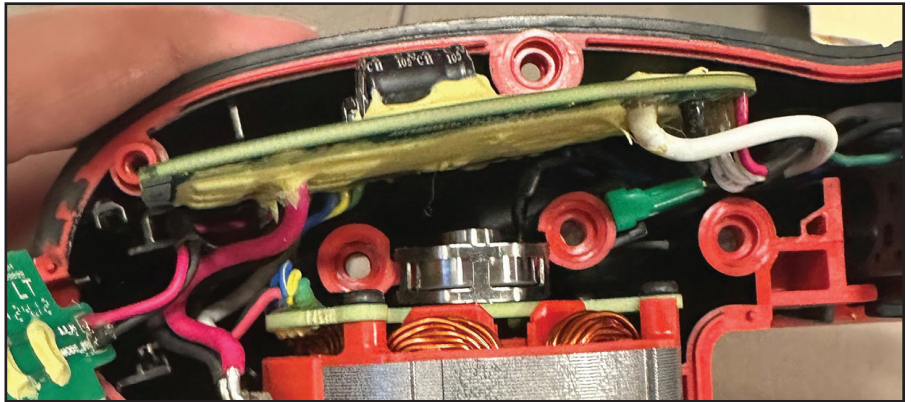


FIG.	PART NO.	DESCRIPTION OF PART	NO. REQ.
1	43-54-4025	Edge Guard	(1)
19	-----	Power Button	(1)
20	06-82-6351	M3 x 16mm PH Torx T-10 B Screw	(10)
21	-----	Handle Support	(1)
22	-----	Rubber Slug	(2)
23	-----	Dust Fan Cover	(1)
24	-----	M4 x 10mm PH Torx T-20 M Screw	(2)
25	-----	Dust Fan Top Cover	(1)
26	-----	Dust Fan Support	(1)
27	-----	M3 x 14mm Self-Tapping Screw	(2)
28	-----	M3 x 20mm Pan Hd. Torx ST Screw	(6)
29	-----	Dust Scoop Support	(1)
30	-----	Dust Scoop Cover	(1)
31	-----	M3 x 8mm CH Hexagon Recess Screw	(6)
32	-----	Pad Brake	(1)
34	-----	M4 x 10mm Pan Hd. Torx T-20 Screw	(4)
38	-----	Rubber Pin	(2)
39	-----	Rubber Slug	(2)
40	-----	Handle Cover	(1)
42	34-40-2675	Collar O-Ring	(1)
43	-----	Dust Bag	(1)
46	10-20-7240	Warning Label	(1)
47	12-20-9845	Service Nameplate (Not Shown)	(1)
51	14-46-7025	Handle Kit	(1)
52	14-38-7080	Interface Kit	(1)
53	49-36-2837	5" Backer Pad Accessory	(1)
54	14-47-1275	Pad and Brake Kit	(1)
55	42-16-0585	Dust Bag Kit	(1)
56	-----	PCBA and Motor	(1)

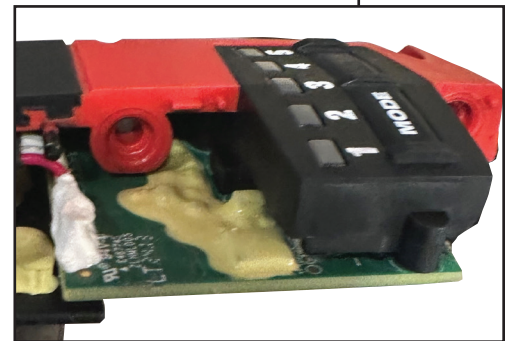
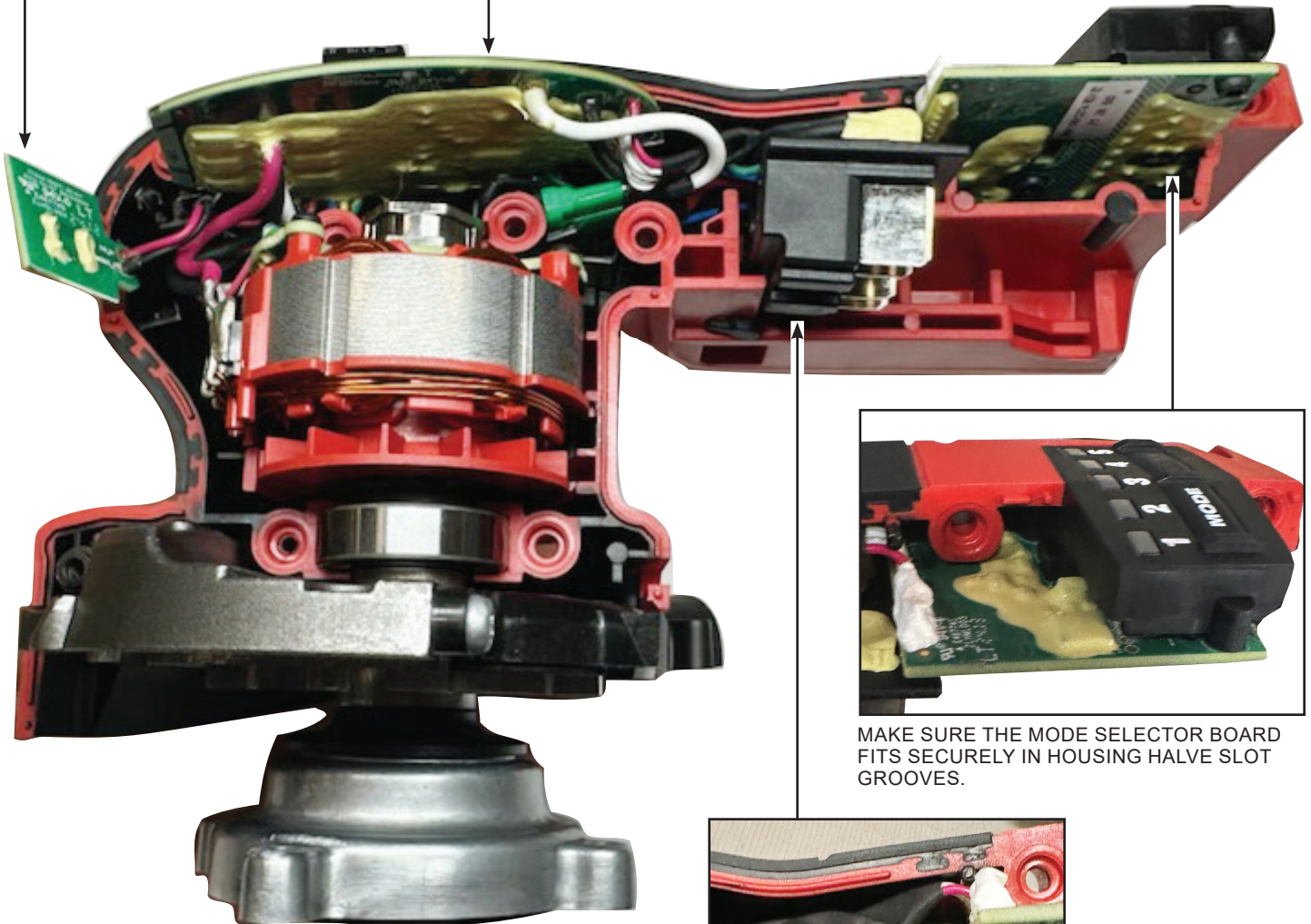
## WIRING INSTRUCTIONS



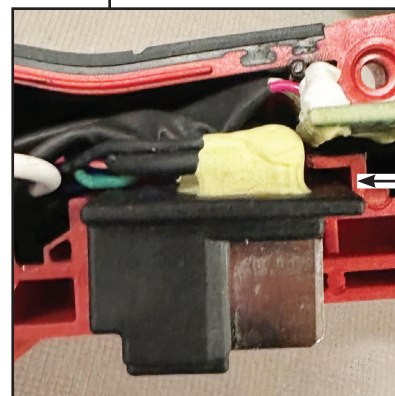
MAKE SURE THE POWER BUTTON BOARD FITS SECURELY IN BOTH THE COVER AND SUPPORT HOUSING HALF SLOT GROOVES.



MAKE SURE THE MAIN BOARD IS IN HOUSING HALF SLOT GROOVES.

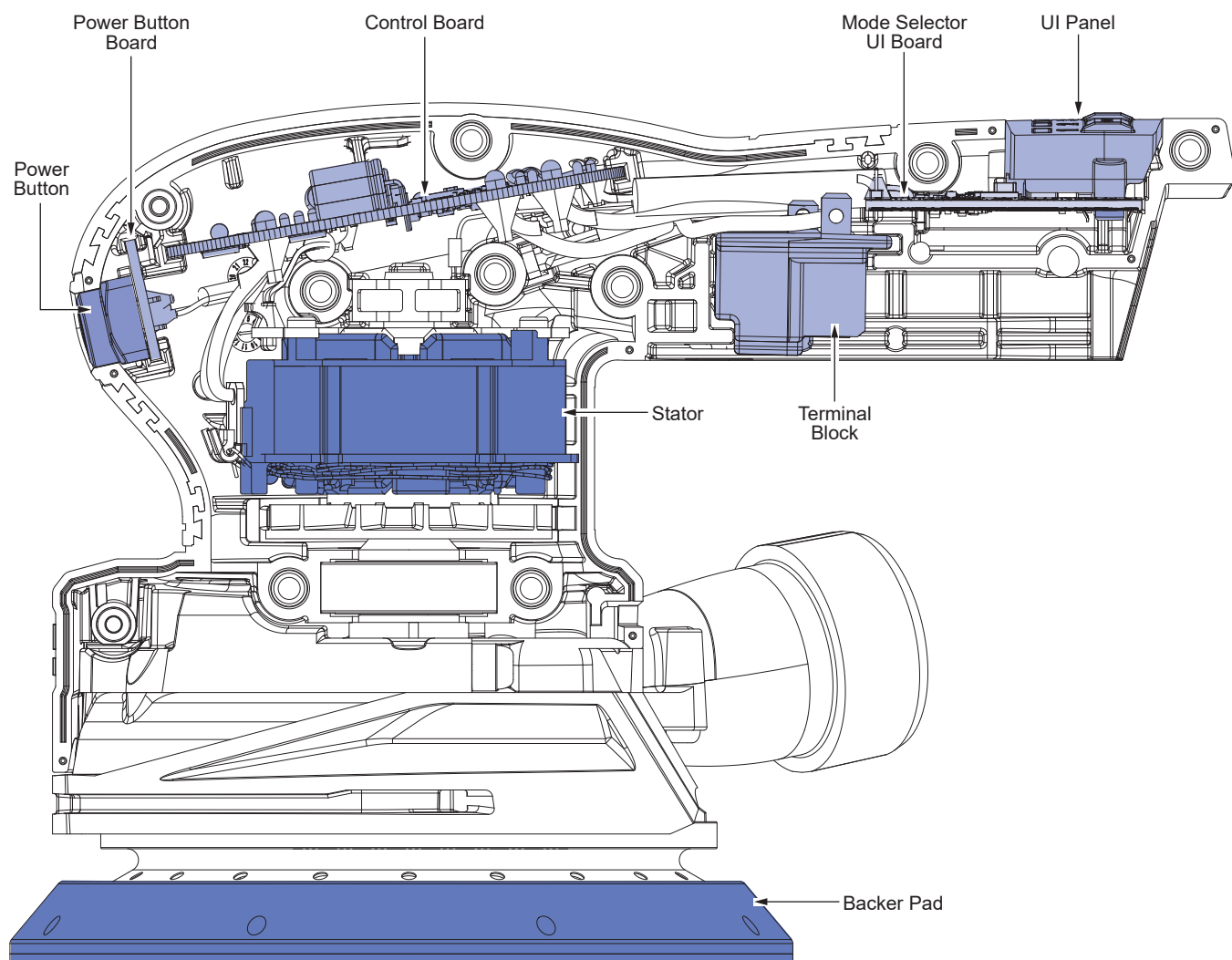


MAKE SURE THE MODE SELECTOR BOARD FITS SECURELY IN HOUSING HALF SLOT GROOVES.



MAKE SURE THE TERMINAL BLOCK FITS IN HOUSING HALF SLOT GROOVES.

## WIRING INSTRUCTIONS - CONTINUED



### WARNING

- Take notice of wire routing and position in wire guides and traps while dismantling tool.
- Be sure that all components of the electronics kit are seated firmly and squarely in housing recesses.
- Avoid pinched wires, be sure all wires and sleeves are pressed completely down in wire guides and traps.
- Prior to installing housing cover onto handle support, be sure that there are no interferences.
- Be sure to check for proper functionality of switches and buttons after housing halves have been secured.

## TORQUE CHART

SCREW TORQUE SPECIFICATIONS					SEAT TORQUE	
FIG.	PART NO.	PART	WHERE USED		(kgf-cm)	(lb-in)
20	06-82-1080	M3 x 16mm PH Torx T-10 B Screw	Handles		8-10	7-8.7
24	-----	M4 x 10mm PH Torx T-20 M Screw	Dust Fan Cover		8-12	7-10.4
27	-----	M3 x 14mm Self-Tapping Screw	Dust Fan Cover/Support		6-8	5-7
28	-----	M3 x 20mm Pan Hd. Torx Screw	Dust Fan Support/Handles		6-8	5-7
31	-----	M3 x 8mm CH Hex. Recess Screw	Dust Scoop Support/Cover		5-7	4.3-6
34	-----	M4 x 10mm PH. Torx T-20 Screw	to Connect Carrier and Pad		20-24	17-21