

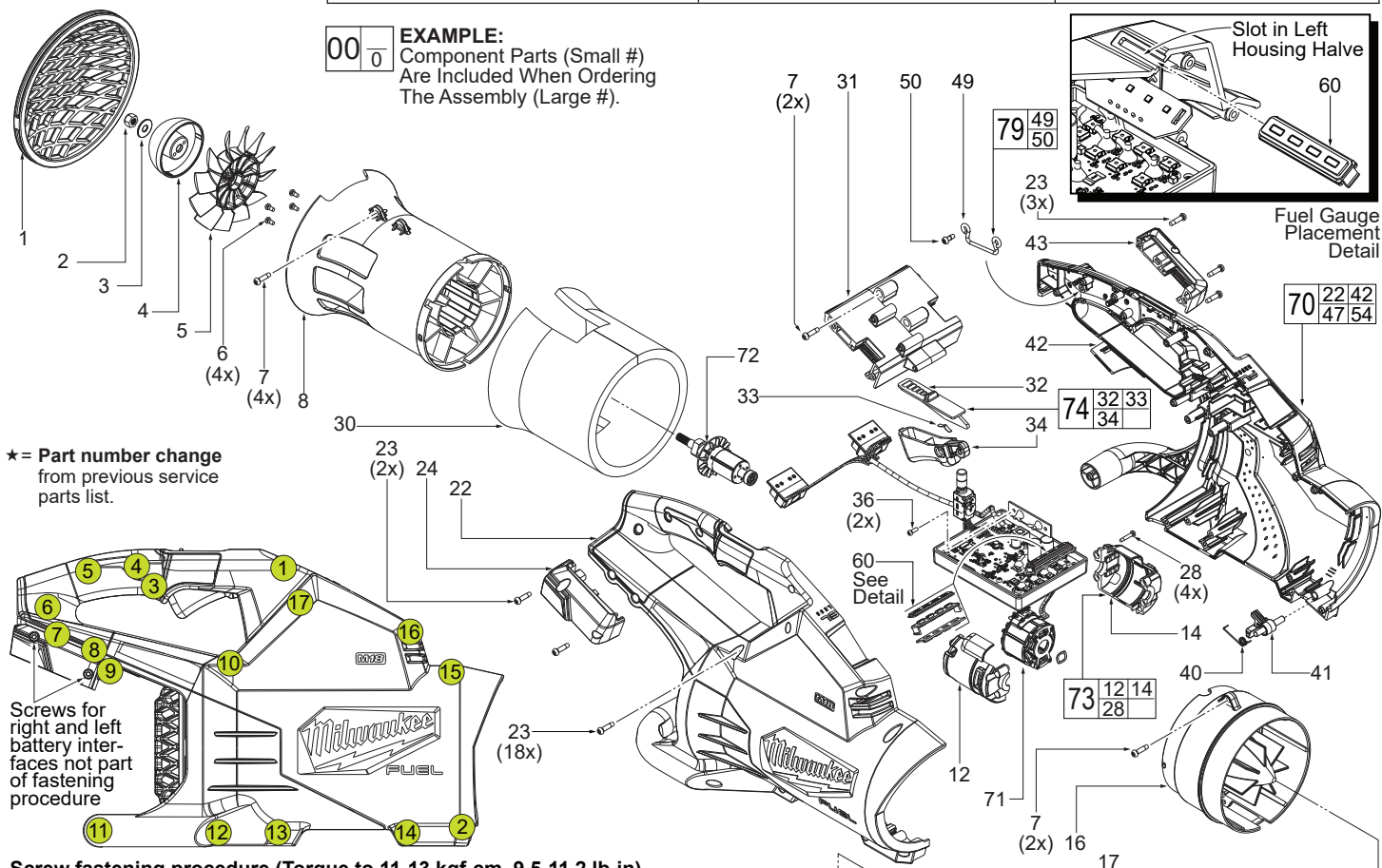


# SERVICE PARTS LIST

BULLETIN NO.  
54-05-2711

SPECIFY CATALOG NO. AND SERIAL NO. WHEN ORDERING PARTS		REVISED BULLETIN	DATE
<b>M18 FUEL™ DUAL BATTERY BLOWER</b>		54-05-2710	Sept. 2024
CATALOG NO.	2824-20	WIRING INSTRUCTION <b>See Page 2</b>	
SERIAL NO.	N18B		

**EXAMPLE:**  
Component Parts (Small #)  
Are Included When Ordering  
The Assembly (Large #).



★ = Part number change  
from previous service  
parts list.

## Screw fastening procedure (Torque to 11-13 kgf-cm, 9.5-11.2 lb-in)

FIG.	PART NO.	DESCRIPTION OF PART	NO. REQ.
1	31-15-0193	Inlet Vent	(1)
2	05-55-0033	Lock Nut	(1)
3	45-88-0161	Flat Washer	(1)
4	42-92-0001	Fan Dome	(1)
5	22-84-0026	Fan	(1)
6	-----	M3 x 8mm Pan Hd. PT T-10 Screw	(4)
7	-----	M4 x 16mm Pan Hd. Delta T-20 Screw	(8)
8	43-72-0087	Blower Inlet Duct	(1)
12	-----	Right Motor Insulator Halve	(1)
14	-----	Left Motor Insulator Halve	(1)
16	43-72-0034	Outlet Cone Section	(1)
17	43-24-0012	Nozzle (Exhaust Tube)	(1)
22	-----	Right Housing Halve - Cover	(1)
23	-----	M4 x 16mm Pan Hd. PT T-20 Screw	(23)
24	31-06-0037	Right Battery Interface	(1)
26	05-88-0106	M2 x 0.89 PT Screws in Stator (Not Shown)	(4)
28	05-81-0277	M3 x 16mm Pan Hd. ST T-10 Screw	(4)
30	58-10-1853	Foam Insert	(1)
31	31-06-0038	Middle Battery Interface	(1)
32	-----	Speed Control Slide	(1)
33	40-50-0027	Spring Plate	(1)
★ 34	23-66-0319	Trigger	(1)
36	05-81-1195	M3 x 8mm Pan Hd. ST T-10 Screw	(2)
40	40-50-0064	Nozzle Lock Spring	(1)
41	44-20-0077	Nozzle Lock	(1)
42	-----	Left Housing Halve - Support	(1)
43	31-06-0039	Left Battery Interface	(1)
47	10-20-9811	Warning Label (Not Shown)	(1)
★ 49	-----	Grounding Wire	(1)
★ 50	-----	M4 x 10mm Pan Hd. Torx ST Screw	(1)
54	12-20-0491	Service Nameplate (Not Shown)	(1)
60	44-06-0202	Fuel Gauge Lens/Bezel Service Kit	(1)
61	49-16-2797	Blower Nozzle Attachment Kit (Accessory)	(1)
★ 70	14-46-0518	Housing Service Kit	(1)
★ 71	14-20-0256	Electronics Assembly	(1)
72	16-01-1038	Rotor Assembly	(1)
73	31-50-0262	Motor Insulator Service Kit	(1)
★ 74	23-66-0321	Trigger Service Kit	(1)
75	31-12-0121	Tapered Nozzle Attachment Assembly	(1)
76	31-12-0122	Flared Nozzle Attachment Assembly	(1)
★ 79	45-56-0149	Service Grounding Wire Kit	(1)

FIG. 54,55

## NOTES

A clean, dry surface is essential for proper performance for any adhesive system. The area intended for application of any adhesive label or nameplate must be prepared by cleaning with isopropyl alcohol. The solvent is to be applied with a clean, lint free applicator and the surface allowed to dry before applying any label or nameplate.

## SCREW TORQUE SPECIFICATIONS

FIG.	PART NO.	WHERE USED	SEAT TORQUE	
			(kgf-cm)	(lb-in)
2	-----	Fan Dome, Fan	17-20	14.7-17.3
6	-----	Inlet Duct	6-8	5.2-6.9
7	-----	Inlet Duct, Outlet Cone	13-15	11.2-13.0
23	-----	Hsg. Halves, Interfaces	11-13	9.5-11.2
28	05-81-0277	Motor Insulator Halve	6-8	5.2-6.9
36	05-81-1195	Fuse Trace Board	5-7	4.3-6.0

MILWAUKEE TOOL • [www.milwaukeetool.com](http://www.milwaukeetool.com)  
13135 W. LISBON RD., BROOKFIELD, WI 53005

Drwg. 1

## WIRING

As an aid to reassembly, take notice of wire routing and position in wire guides and traps while dismantling tool.

Be sure that all components of the electronics kit are seated firmly and squarely in the housing recesses.

Avoid pinched wires, be sure that all wires and sleeves are pressed completely down in wire guides and traps.

Prior to securing the housing cover onto the housing support, be sure that there are no interferences.

Before installing the battery, check for proper functionality of on-off switch trigger and lock-off shuttle.

Install batteries and depress on-off switch trigger to assure tool is operating properly.

