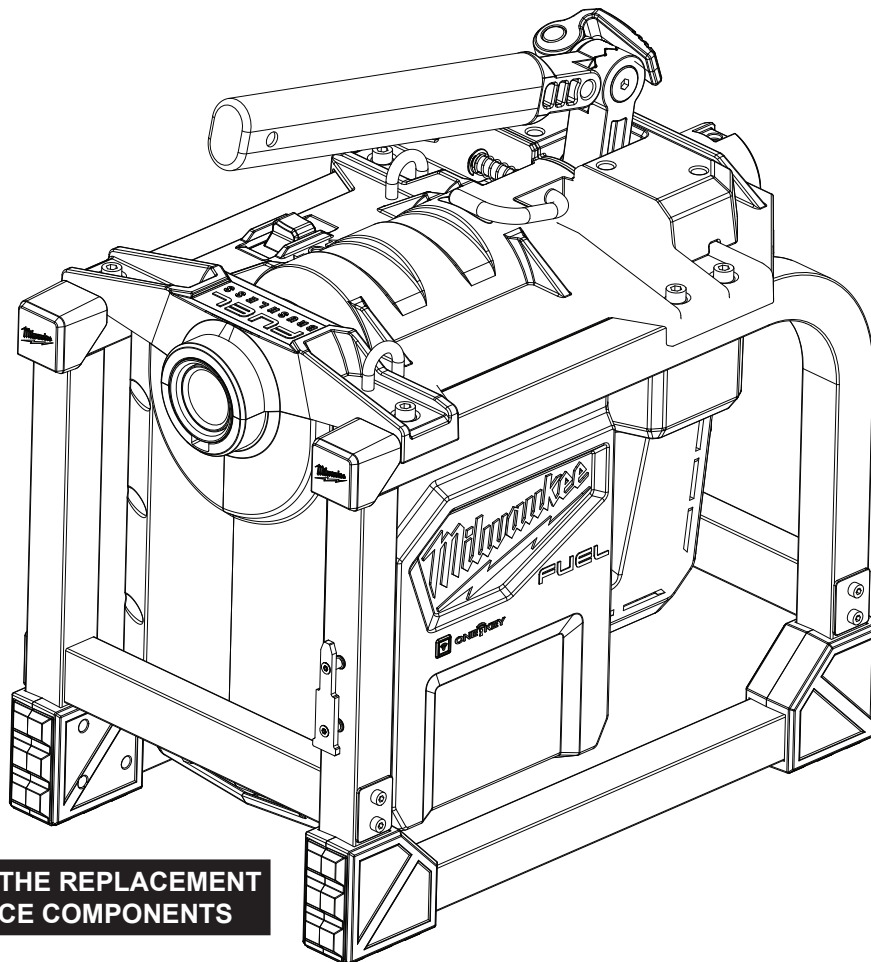




SERVICE PARTS LIST

BULLETIN NO.
54-00-2818

SPECIFY CATALOG NO. AND SERIAL NO. WHEN ORDERING PARTS		REVISED BULLETIN	DATE
M18™ FUEL™ Compact Sectional Machine w/One-Key™			Mar. 2021
CATALOG NO.	2818-20	STARTING SERIAL NO.	L67A
		WIRING INSTRUCTION	



SEE PAGE TWO FOR THE REPLACEMENT
OF EXTERNAL SERVICE COMPONENTS

**Due to the complexities of One-Key™ electronics in this tool,
contact the following for service related questions and issues:**

e-Service at: www.milwaukeetool.com/e-service

or

questions, please call 1.800.SAWDUST (1.800.729.3878)

or

Return it to a MILWAUKEE *factory* Service Center location, freight prepaid and insured.
A copy of the proof of purchase should be included with the return product.

If you have questions please contact Milwaukee Product Service at:

Product Technical Support via phone at: 262.783.8642

or

Via email at: METProductSupport@milwaukeetool.com

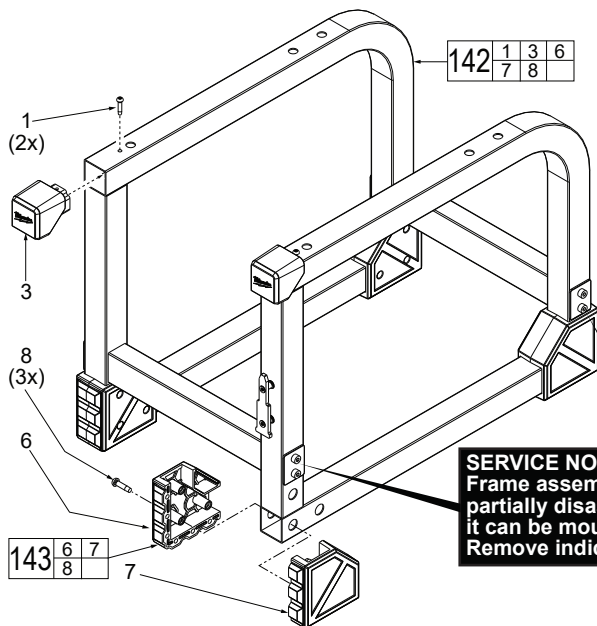
Disassembly is not recommended and could void the warranty.



SERVICE PARTS LIST

BULLETIN NO.
54-00-2818

SPECIFY CATALOG NO. AND SERIAL NO. WHEN ORDERING PARTS		REVISED BULLETIN	DATE
M18™ FUEL™ Compact Sectional Machine w/One-Key™			Mar. 2021
CATALOG NO.	2818-20	STARTING SERIAL NO.	L67A
		WIRING INSTRUCTION	



00 0

EXAMPLE:
Component Parts (Small #)
Are Included When Ordering
The Assembly (Large #).

SERVICE NOTE:
Frame assembly must be
partially disassembled before
it can be mounted on the tool.
Remove indicated bolts.

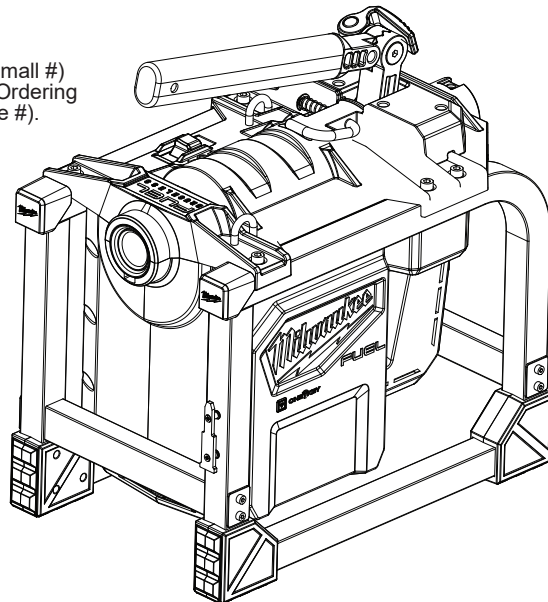


FIG.	PART NO.	DESCRIPTION OF PART	NO. REQ.
1	06-82-1080	M3 x 14mm Pan Hd. ST T-10 Screw	(2)
3	31-12-0161	Frame Cap	(2)
6	-----	Frame Foot Support (One per kit)	(4)
7	-----	Frame Foot Cover (One per kit)	(4)
8	06-82-4003	M4 x 16mm Pan Hd. ST T-20 Screw	(12)
142	43-40-0063	Frame Assembly	(1)
143	43-40-0067	Frame Foot Kit (Set of 1)	(4)
152	12-20-0313	Service Nameplate (Not Shown)	(1)
160	48-08-0555	Carrying Strap	(1)
161	43-11-0033	5/8" Cable Drum	(1)
162	43-11-0032	7/8" Cable Drum	(1)
163	47-53-2874	5/8" Guide Hose	(1)
164	47-53-2873	7/8" Guide Hose	(1)
	47-53-2869	Small Sectional Cable Reel	(1)
	47-53-2870	Medium Sectional Cable Reel	(1)

