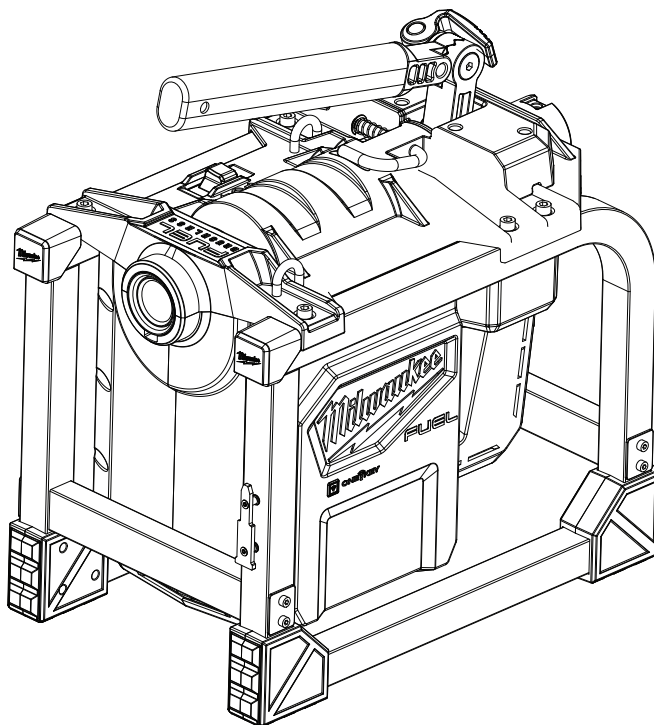




SERVICE PARTS LIST

BULLETIN NO.
54-05-2810

SPECIFY CATALOG NO. AND SERIAL NO. WHEN ORDERING PARTS		REVISED BULLETIN	DATE
M18 FUEL™ Sectional MACHINE for 5/8" and 7/8"			Dec. 2023
CATALOG NO.	2818-20	SERIAL NO.	L67A
		WIRING INSTRUCTION SEE PAGE 3	



Only maintenance, service, repairs, and replacements of parts as defined in the Operator's Manual can be performed by the user.

All other repairs are to **ONLY** be performed by personnel authorized by MILWAUKEE TOOL. Do not attempt to install other parts; this **COULD** void your tool warranty.

For service, parts, or inquiries, contact us:

- Customer Service at 1.800.SAWDUST (1.800.729.3878)
- E-Service tool repair at: www.milwaukeetool.com/e-service
- Find a local authorized MILWAUKEE service location at Milwaukeetool.com
- Find a MILWAUKEE factory Service Center Location or MILWAUKEE factory Central Repair Center at Milwaukeetool.com. Send the following, posted paid and insured:
 - Your name, address, and phone number
 - Description of the issues
 - Copy of the proof of purchase
 - Tool, charger, and batteries involved with the issues

MILWAUKEE factory Central Repair Centers:

MILWAUKEE TOOL
Central Repair
1401 Sycamore Avenue
Greenwood, MS 38930

MILWAUKEE TOOL
Central Repair
2198 Southtech Drive
Greenwood, IN 46143



SERVICE PARTS LIST

BULLETIN NO.
54-05-2810

SPECIFY CATALOG NO. AND SERIAL NO. WHEN ORDERING PARTS		REVISED BULLETIN	DATE
M18 FUEL™ Sectional MACHINE for 5/8" and 7/8"			Dec. 2023
CATALOG NO.	2818-20	SERIAL NO.	L67A
		WIRING INSTRUCTION SEE PAGE 3	

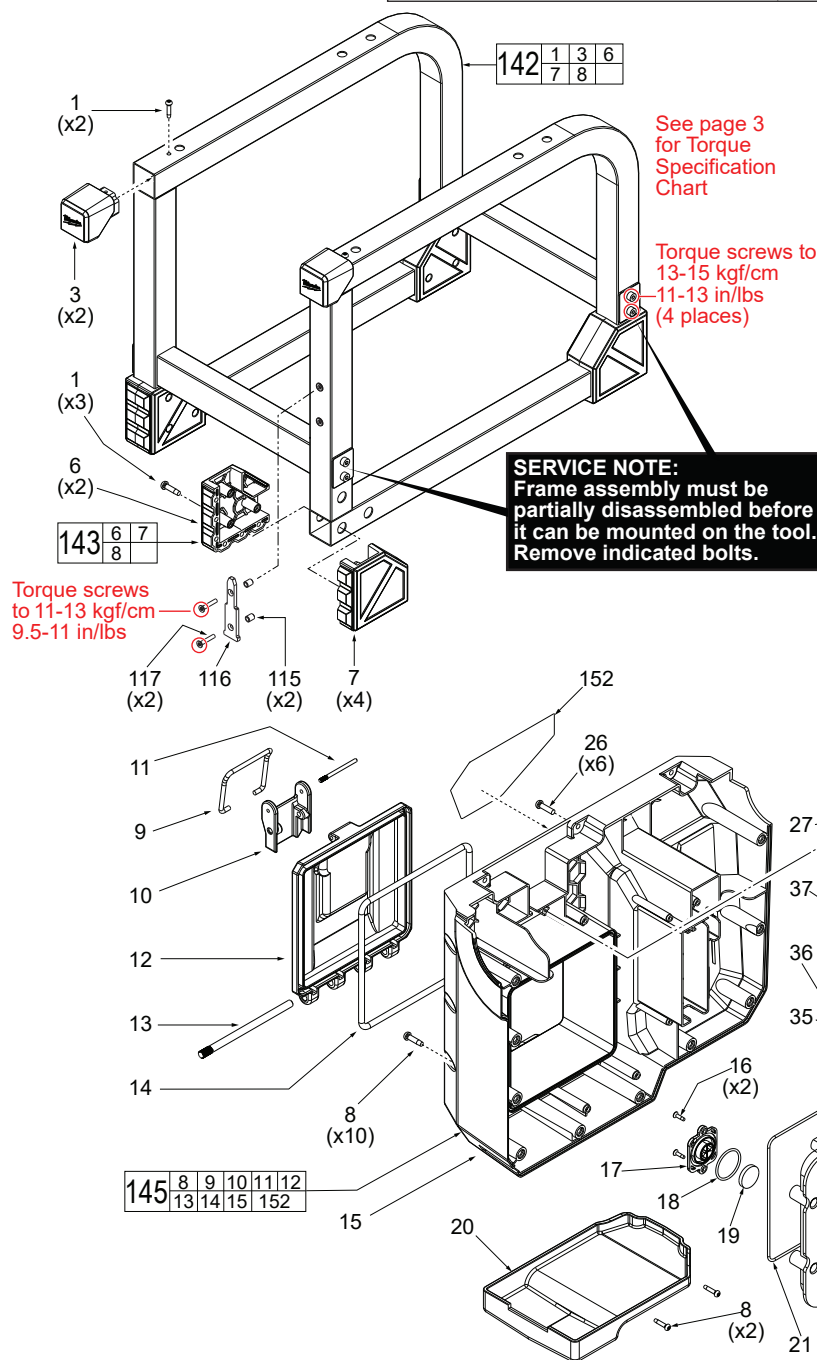
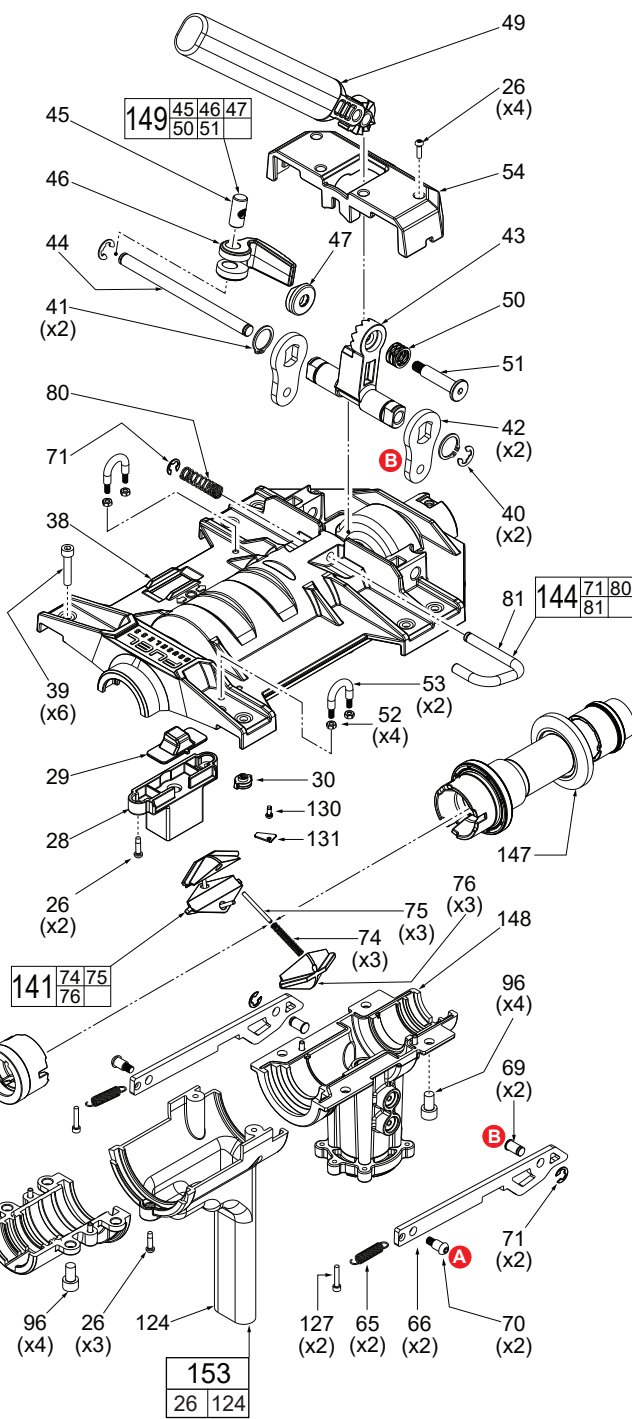
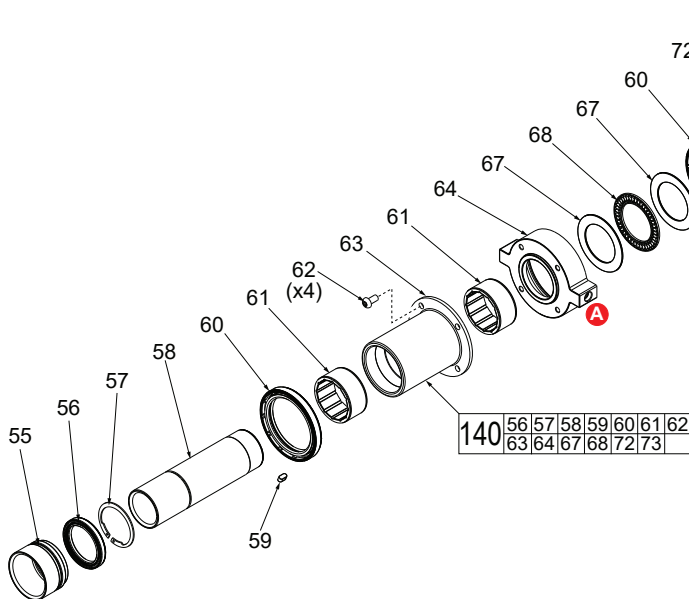


FIG.	PART NO.	DESCRIPTION OF PART	NO. REQ.
21	-----	Housing Gasket	(1)
22	-----	Battery Housing	(1)
23	05-81-1195	M3 x 8mm Flat Hd. T-10 Mach. Screw	(4)
24	-----	Cover Gasket	(1)
25	-----	Cell Cover	(1)
26	05-78-5316	M4 x 14mm Pan Hd. Taprite T-20 Scr.	(10)
27	43-74-0027	Battery Door Hook	(1)
31	05-88-1100	M3 x 10mm PWH ST T-10 Screw	(2)
32	-----	Wire Clip	(2)
33	-----	PCBA Cover	(1)
34	-----	PCBA Cover Gasket	(1)
35	-----	Terminal Support	(1)
36	-----	Interface Gasket	(1)
37	-----	Battery Interface Cover	(1)
82	31-15-0208	Housing Cover	(1)
83	-----	LED Lens	(1)
93	-----	Trigger Roller	(1)
94	-----	Trigger Roller Holder	(1)
95	-----	Trigger Cover Front	(1)
98	-----	Trigger Cover Back	(1)
115	-----	Cable Hook Spacer	(2)
116	-----	Cable Hook	(1)
117	06-10-0651	M3 x .5mm T-10 Screw	(2)
142	43-40-0063	Frame Assembly	(1)
143	43-40-0067	Frame Foot Kit (Set of 1)	(4)
145	14-38-0061	Battery Side/Housing Kit	(1)
146	31-92-0118	Trigger Housing Kit	(1)
148	14-29-0086	Gearbox Assembly	(1)
150	14-20-0288	Electronics Assembly	(1)
151	23-40-0021	Rotor Assembly	(1)
152	12-20-0313	Service Nameplate	(1)

FIG.	PART NO.	DESCRIPTION OF PART	NO. REQ.
1	06-82-1080	M3 x 14mm Pan Hd. ST T-10 Screw	(26)
3	31-12-0161	Frame Cap	(2)
6	-----	Frame Foot Support (One per kit)	(2)
7	-----	Frame Foot Cover (One per kit)	(4)
8	05-88-1300	M4 x 28mm Pan Hd. ST T-20 Screw	(20)
9	43-74-0091	Battery Door Latch Hook	(1)
10	-----	Battery Door Latch	(1)
11	-----	Latch Pin	(1)
12	-----	Battery Door	(1)
13	-----	Battery Door Pin	(1)
14	-----	Battery Door Gasket	(1)
15	-----	Housing Support	(1)
16	06-82-0238	M2.6 x 10mm Flat Hd. Phillips Screw	(2)
17	-----	Coin Cell Cover	(1)
18	-----	O-Ring	(1)
19	-----	3V Coin Cell Battery (CR2032)	(1)
20	-----	Contamination Tray	(1)

EXAMPLE:
Component Parts (Small #)
Are Included When Ordering
The Assembly (Large #).

FIG.	PART NO.	DESCRIPTION OF PART	NO. REQ.
26	05-78-5316	M4 x 14mm Pan Hd. Taptite T-20 Screw	(9)
28	-----	Switch Mount	(1)
29	-----	Switch Slide	(1)
30	43-86-0152	Pin Key Retainer	(1)
38	31-50-0047	Top Housing	(1)
39	05-74-0026	M6 x 30mm Cap Hd. Hex Recess Screw	(6)
40	42-70-0625	E Retaining Ring	(2)
41	34-60-0121	Retaining Ring	(2)
42	31-89-0013	Pivot Arm	(2)
43	28-06-0232	Lever Base	(1)
44	-----	Pivot Arm Shaft	(1)
45	-----	Clamp Cross Bar	(1)
46	28-10-0082	Cam Clamp	(1)
47	-----	Cam Spacer	(1)
49	14-29-0101	Lever Arm	(1)
50	40-50-0566	Wave Spring	(1)
51	-----	Cam Rod	(1)
52	05-55-0004	M4 Hex Nut	(4)
53	45-56-0051	Strap U-Bolt	(2)
54	31-15-0233	Lever Arm Cover	(1)
55	-----	Front Guide	(1)
56	-----	Front Tube Seal	(1)
57	-----	C-Retaining Ring	(1)
58	-----	Front Tube	(1)
59	-----	Key	(1)
60	-----	Cone Pusher Seal	(2)
61	-----	Bushing	(2)
62	-----	M5 x 10mm Pan Hd. T-25 Mach. Screw	(4)
63	-----	Flanged Tube	(1)
64	-----	Push Plate	(1)
65	40-50-0362	Lever Return Spring	(2)
66	44-94-0274	Pull Rod	(2)
67	-----	Flat Washer	(2)
68	-----	Thrust Needle Bearing	(1)
69	06-65-0422	Pivot Arm Pin	(2)
70	05-74-0127	M6 x 16mm Pan Hd. Hex Recess Screw	(2)
71	42-70-5268	E-Retaining Ring	(3)

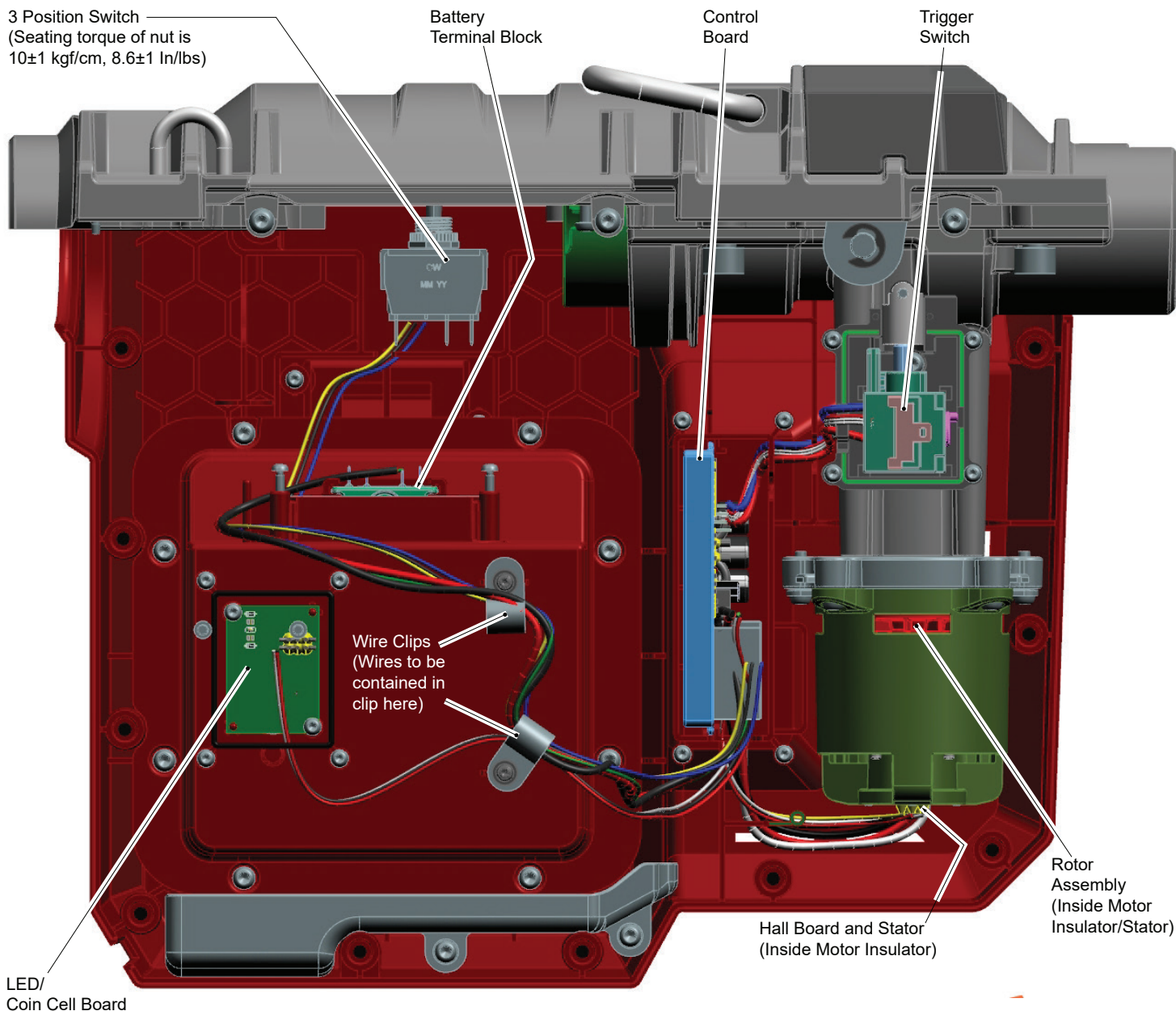


A B = Pull Rods (66) connect to Push Plate (64) at 'A' and to Pivot Arms (42) at 'B'

EXAMPLE:
 00 0 Component Parts (Small #)
 Are Included When Ordering
 The Assembly (Large #).

FIG.	PART NO.	DESCRIPTION OF PART	NO. REQ.
72	-----	Seal Retaining Ring	(1)
73	-----	Cone Pusher	(1)
74	40-50-0186	Collet Spring	(3)
75	-----	Collet Alignment Pin	(3)
76	-----	Collet	(3)
80	40-50-0349	Lever Arm Hook Spring	(1)
81	-----	Lever Arm Hook	(1)
96	06-75-3971	M8 x 14mm Cap Hd. Hex Recess Screw	(8)
124	-----	Contamination Shroud	(1)
126	31-50-0112	Housing Bottom-Front	(1)
127	05-74-0445	M4 x 22mm Cap Hd. Hex Recess Screw	(2)
140	42-82-0015	Front Tube Assembly	(1)

FIG.	PART NO.	DESCRIPTION OF PART	NO. REQ.
130	06-82-2310	M3 x 8mm Pan Head T-10 Screw	(1)
131	-----	Rubber Retainer	(1)
141	44-40-0037	Single Collet Assembly	(3)
144	14-36-0017	Lever Arm Retaining Hook Assembly	(1)
147	42-82-0020	Rear Tube Assembly	(1)
148	14-29-0086	Gearbox Assembly	(1)
149	14-34-0151	Lever Arm Switcher Assembly	(1)
153	14-46-0444	Contamination Shroud Service Kit	(1)



AS AN AID TO REASSEMBLY, TAKE NOTICE OF WIRE ROUTING AND POSITION IN WIRE GUIDES AND TRAPS WHILE DISMANTLING TOOL.

BE SURE THAT ALL COMPONENTS OF THE ELECTRONICS KIT ARE SEATED FIRMLY AND SQUARELY IN THE HANDLE RECESSES.

AVOID PINCHED WIRES, BE SURE THAT ALL WIRES AND SLEEVES ARE PRESSED COMPLETELY DOWN IN WIRE GUIDES AND TRAPS.

PRIOR TO SECURING HOUSING COVER ONTO HOUSING SUPPORT, BE SURE THAT THERE ARE NO INTERFERENCES.

BEFORE INSTALLING THE BATTERY, CHECK FOR PROPER FUNCTIONALITY OF SHUTTLE AND TRIGGERS.

INSTALL BATTERY AND DEPRESS SWITCH TRIGGER TO ASSURE TOOL IS OPERATING PROPERLY.

SCREW TORQUE SPECIFICATIONS

FIG.	PART NO.	DESCRIPTION OF FASTENER	WHERE USED	SEAT TORQUE	
				(kgf-cm)	(lb-in)
1	06-82-1080	M3 x 14mm Pan Hd. ST T-10 Screw	Trigger Roller	2-3	1.7-2.6
26	05-78-5316	M4 x 17mm Pan Hd. Taptite T-20 Screw	Housing Support to Top Housing	16-20	13.8-17.3
26	05-78-5316	M4 x 17mm Pan Hd. Taptite T-20 Screw	Motor to Gearcase	16-20	13.8-17.3
39	05-88-0051	M6 x 30mm Cap Hd. Hex Recess Screw	Top Housing to Frame	13.5-16.5	11.7-14.3
62	-----	M5 x 10mm Pan Hd. T-25 Mach. Screw	Flanged Tube to Push Plate	20-24	17-21
70	05-74-0127	M6 x 16mm PH Hex Recess Mach. Screw	Pull Rod to Push Plate	28-32	24-27
96	06-75-3971	M8 x 14mm Cap Hd. Hex Recess Screw	GBX to Top Housing	150-200	130-173
96	06-75-3971	M8 x 14mm Cap Hd. Hex Recess Screw	Front Bottom Housing to Top Housing	150-200	130-173