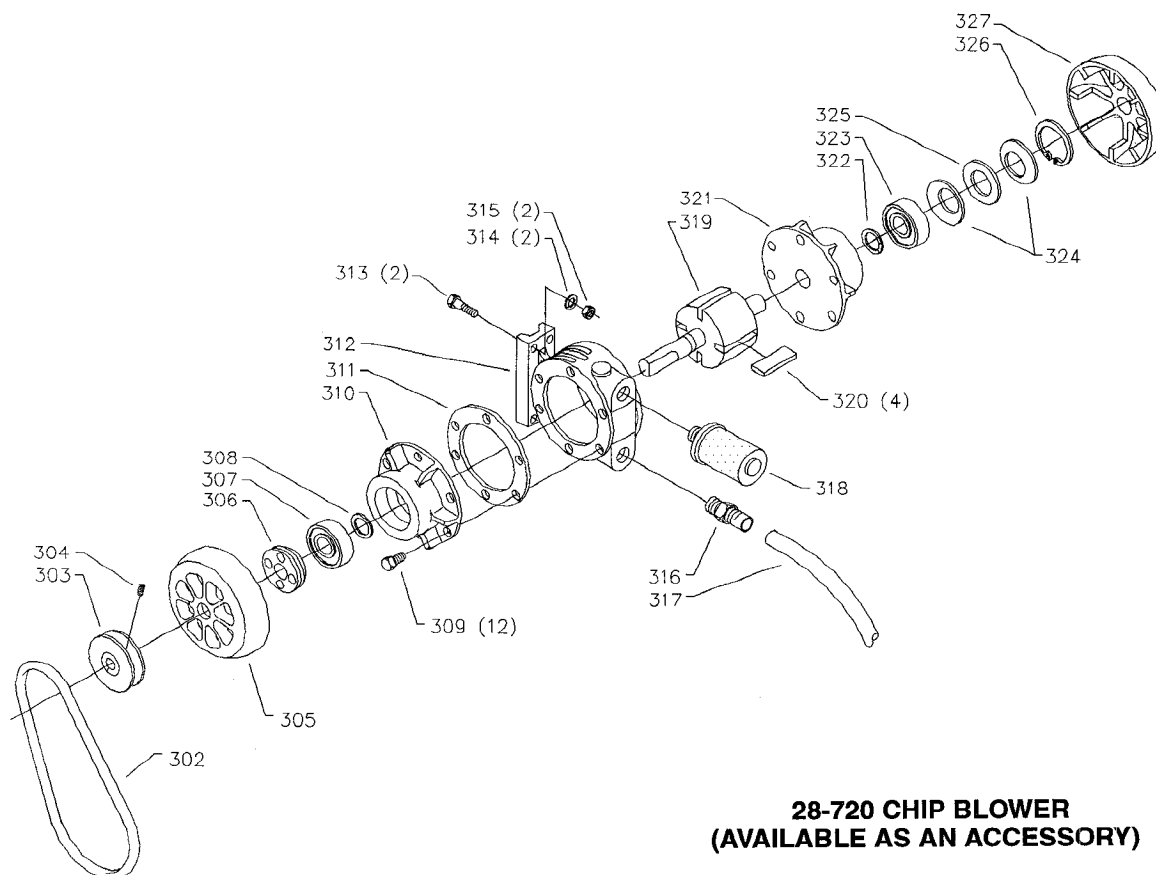


REPLACEMENT PARTS



**28-720 CHIP BLOWER
(AVAILABLE AS AN ACCESSORY)**

REF NO	PART NUMBER	DESCRIPTION	REF NO	PART NUMBER	DESCRIPTION
*	28-720	CHIP BLOWER, CONST OF:	315	902-01-120-1034	1/4-20 HEX NUT
**	426-05-361-5001	HOSE ASSY (SPOUT W/NOZZLE)	316	906-00-000-8720	FITTING
302	908-13-061-7669	BELT	317	426-05-061-5001	HOSE
303	41-052	PULLEY, INCL:	318	426-05-346-5003	FILTER ASSY
304	901-04-150-0206	5/16-18 X 5/16" HEX SOC SET SCREW	319	426-05-002-5001	ARBOR
305	438-01-033-0012	FAN	320	426-05-063-5009	INSERT
306	426-05-020-5001	CAP	321	426-05-072-5034	END PLATE - RH
307	1086894	BALL BEARING	322	426-05-036-5001	DEFLECTOR
308	426-05-036-5001	DEFLECTOR	323	1086894	BALL BEARING
309	901-01-060-0651	1/4-28 X 1/2" HEX HD SCREW	324	426-05-122-5001	SPRING
310	426-05-072-5035	END PLATE - LH	325	426-05-083-5001	SHIM WASHER
311	426-05-116-5003	GASKET	326	904-15-101-7147	RET RING
312	426-05-012-5005	BODY	327	438-01-033-0012	FAN
313	901-01-060-0623	1/4-20 X 1" HEX HD SCREW			
314	904-01-010-1620	FLAT WASHER	*	NOT SHOWN ASSEMBLED	
			**	NOT SHOWN	

STANDARD SAFETY EQUIPMENT

In order to promote tool safety, Delta International Machinery Corp. strictly enforces the policy of repairing or replacing any damaged or missing standard safety equipment on machines presented to Delta Authorized Service Center for service/repairs. Any product which is presented to a Delta Authorized Service Center for repairs which contains missing or damaged standard safety equipment will have that equipment repaired or replaced and the customer will be charged for any such service/repairs. Customers can avoid such charges only if the missing safety component is supplied to the service center at the time of repair.

This parts list is provided to aid in obtaining service parts. Copies of the instruction and maintenance literature can be obtained through the Delta Technical Publications Department or through your local service outlet.