



SERVICE PARTS LIST

BULLETIN NO.
54-38-2370

SPECIFY CATALOG NO. AND SERIAL NO. WHEN ORDERING PARTS		REVISED BULLETIN	DATE
M18™ BRUSHLESS 4-1/2" - 5" Cut-Off Grinder			Jan. 2023
CATALOG NO.	2686-20	STARTING SERIAL NO.	N44A
		WIRING INSTRUCTION SEE PAGES 2-3	

EXAMPLE:
Component Parts (Small #) Are Included
When Ordering The Assembly (Large #).

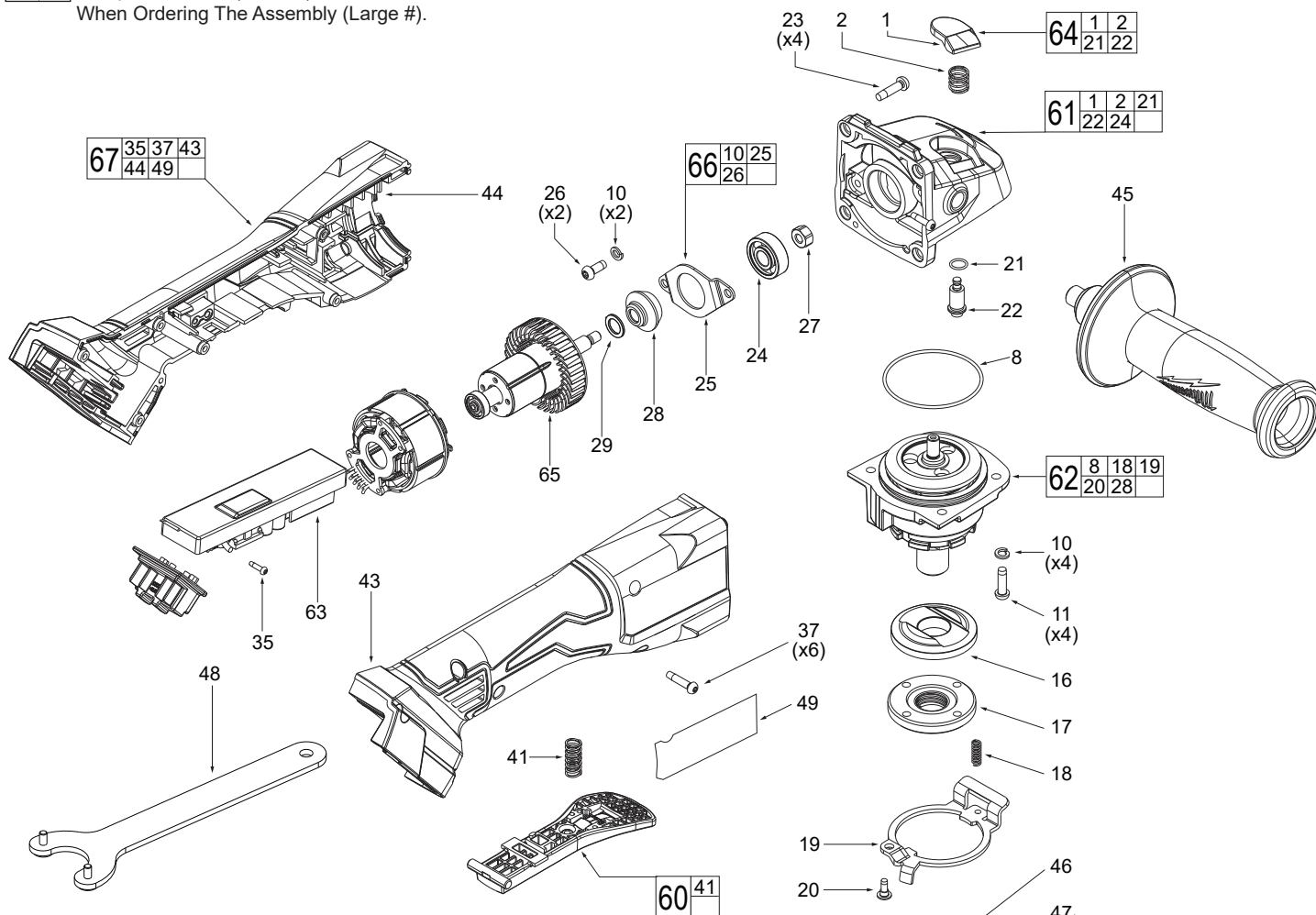


FIG.	PART NO.	DESCRIPTION OF PART	NO. REQ.
1	-----	Spindle Lock Button	(1)
2	-----	Spindle Lock Spring	(1)
8	34-40-0330	O-Ring	(1)
10	05-90-0225	Spring Washer	(6)
11	05-78-0316	M4 x 14mm Pan Hd. Taptite T20 Screw	(4)
16	43-34-3000	Disc Flange	(1)
17	44-40-7100	Flange Nut	(1)
18	40-50-0386	Spring	(1)
19	44-20-0991	Lock Tang	(1)
20	45-04-0031	M3 x .5mm Pan Washer Hd. Phillips Screw	(1)
21	-----	O-Ring	(1)
22	-----	Spindle Lock Pin	(1)
23	05-88-1200	M4 x 16mm Pan Hd. Recess ST T20 Screw	(4)
24	02-40-0621	Ball Bearing	(1)
25	44-86-2800	Bearing Retainer	(1)
26	05-78-0105	M4 x 10mm Pan Hd. Taptite T20 Screw	(2)
27	05-55-0620	Hex Nut	(1)
28	-----	Bevel Pinion	(1)
29	45-88-0406	Plain Washer	(1)
35	06-82-1087	M3 x 12mm Pan Hd. ST T10 Screw	(1)
37	06-82-2025	M3.5 x 16mm Pan Hd. Taptite T10 Screw	(6)
41	40-50-0243	Spring	(1)
43	-----	Handle Cover	(1)

FIG.	PART NO.	DESCRIPTION OF PART	NO. REQ.
44	-----	Handle Support	(1)
45	-----	Side Handle	(1)
46	43-54-1221	5" Type 27 Wheel Guard	(1)
47	43-54-4010	Guard Attachment	(1)
48	49-96-7215	Wrench	(1)
49	12-20-0531	Service Nameplate	(1)
60	23-66-0283	Paddle Trigger Assembly	(1)
61	28-14-0024	Gearcase Assembly	(1)
62	38-50-0029	Spindle Hub Assembly	(1)
63	14-20-0467	Electronics Assembly	(1)
64	42-42-0088	Lock Button Kit	(1)
65	16-01-0034	Rotor Assembly	(1)
66	14-62-0300	Bearing Retainer Kit	(1)
67	31-44-0484	Housing Kit	(1)

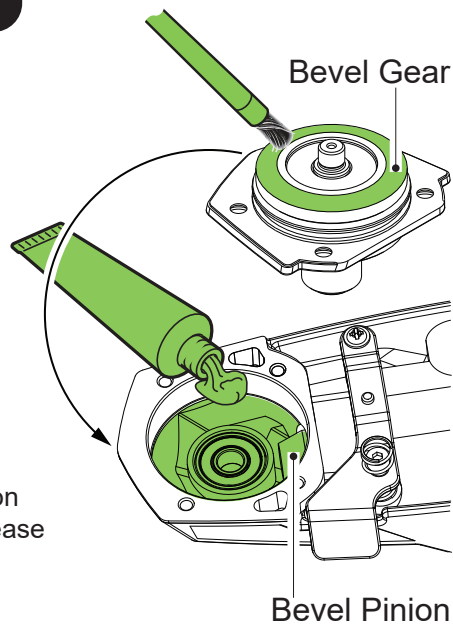
MILWAUKEE TOOL • www.milwaukeetool.com
13135 W. LISBON RD., BROOKFIELD, WI 53005
Drwg. 2

Lubrication Notes

NOTE - When servicing the Gear Case Assembly, 90-95% of the old grease must be removed prior to new grease being added.

For the Spindle Hub Assembly (FIG. 62) apply 5g of "J Grease (No. 49-08-4220) TOTAL.

Coat all bevel gear and bevel pinion teeth liberally. Place remaining grease in gearcase cavity.



NOTE - The surface of the Lock Button **CANNOT be higher than the surface of the gearcase excessed 1mm.**

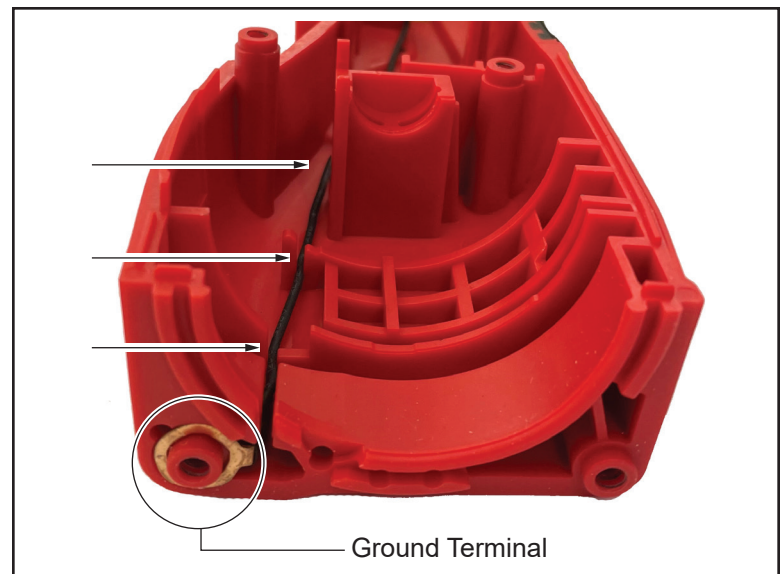
Screw Torque Specs

SCREW TORQUE SPECIFICATIONS

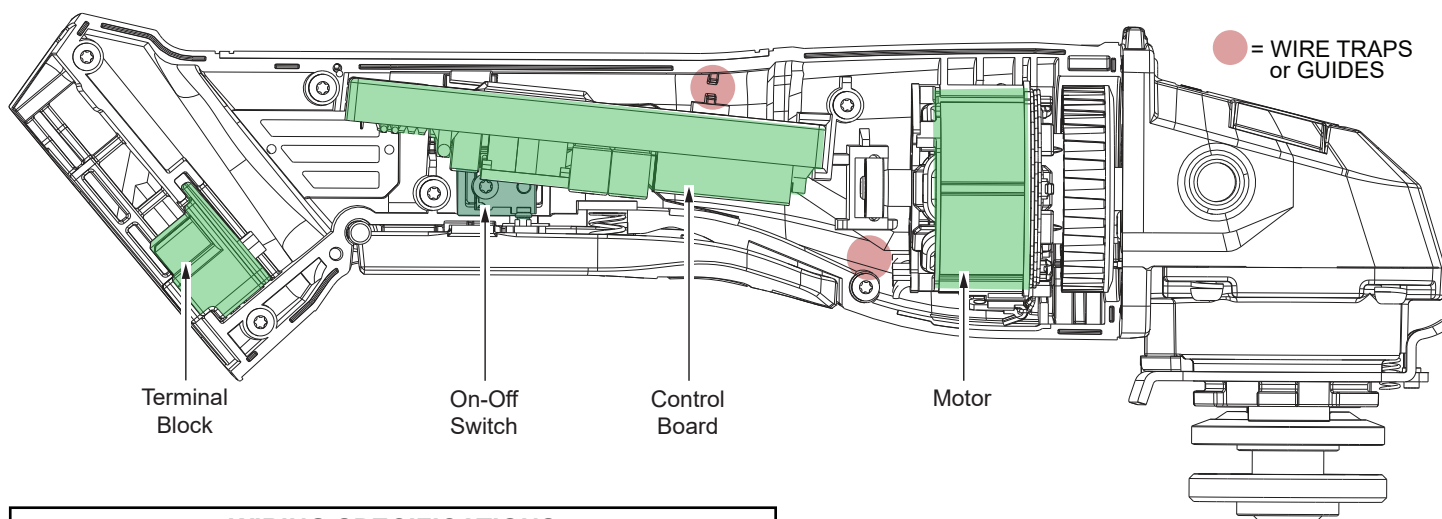
FIG.	PART NO.	WHERE USED	SEAT TORQUE	
			(kgf-cm)	(lb-in)
11	05-78-0316	Spindle Hub	23-29	20-25
20	45-04-0031	Spindle Hub	7-9	6-8
23	05-88-1200	Gearcase	15-19	13-16
26	05-78-0105	Bearing Retainer	23-29	20-25
27	05-55-0620	Rotor Shaft	102±3	89±2.6
35	06-82-1087	Switch	4.0±0.5	3.4±0.4
36	05-55-0620	PCBA	3.0±0.3	2.6±.26
37	06-82-2025	Handle Housing	12.5±16.5	11±14

Service Wiring

Prior to installing the electronics assembly (63) into the housing support (44), place grounding terminal over screw boss as shown. Route ground wire, removing as much slack as possible. Be sure wire is pressed firmly to the back of the wire traps.



SERVICE WIRING



WIRING SPECIFICATIONS

Wire No.	Wire Color	Orientation
1	Red	From Hall Board to Power Control Board
2	Orange	From Hall Board to Power Control Board
3	Blue	From Hall Board to Power Control Board
4	Yellow	From Hall Board to Power Control Board
5	Black	From Hall Board to Power Control Board
6	White	From Power Control Board to Stator
7	Red	From Power Control Board to Stator
8	Black	From Power Control Board to Stator
9	Yellow	From Power Control Board to On-Off Switch
10	Yellow	From Power Control Board to On-Off Switch
11	Black	From Power Control Board to Battery Terminal Block
12	Red	From Battery Terminal Block to Power Control Board
13	Blue	From Power Control Board to Battery Terminal Block
14	Green	From Power Control Board to Battery Terminal Block
15	Black	HV Wire From Battery Terminal Block to Gearcase

As an aid to reassembly, take notice of wire routing and position in wire guides and traps while dismantling tool.

Be sure that all components of the electronics kit are seated firmly and squarely in the housing recesses.

Avoid pinched wires, be sure that all wires and sleeves are pressed completely down in wire guides and traps.

Prior to securing the housing cover onto the housing support, be sure that there are no interferences.

Before installing the battery, check for proper functionality of paddle trigger.

Install battery and depress paddle trigger to assure tool is operating properly.

