



SERVICE PARTS LIST

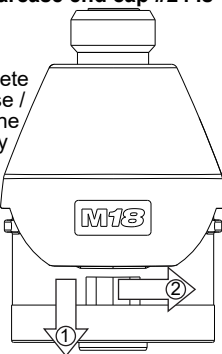
BULLETIN NO.
55-26-2511

| SPECIFY CATALOG NO. AND SERIAL NO. WHEN ORDERING PARTS | | REVISED BULLETIN | DATE |
|--|----------|---|------------|
| M18™ 1/4" Hex Impact Driver - Two Speed | | 55-26-2510 | Sept. 2017 |
| CATALOG NO. | 2657-059 | STARTING SERIAL NO. | F68B |
| | | WIRING INSTRUCTION SEE PAGE 2 | |

EXAMPLE:
00 0 Component Parts (Small #)
Are Included When Ordering
The Assembly (Large #).

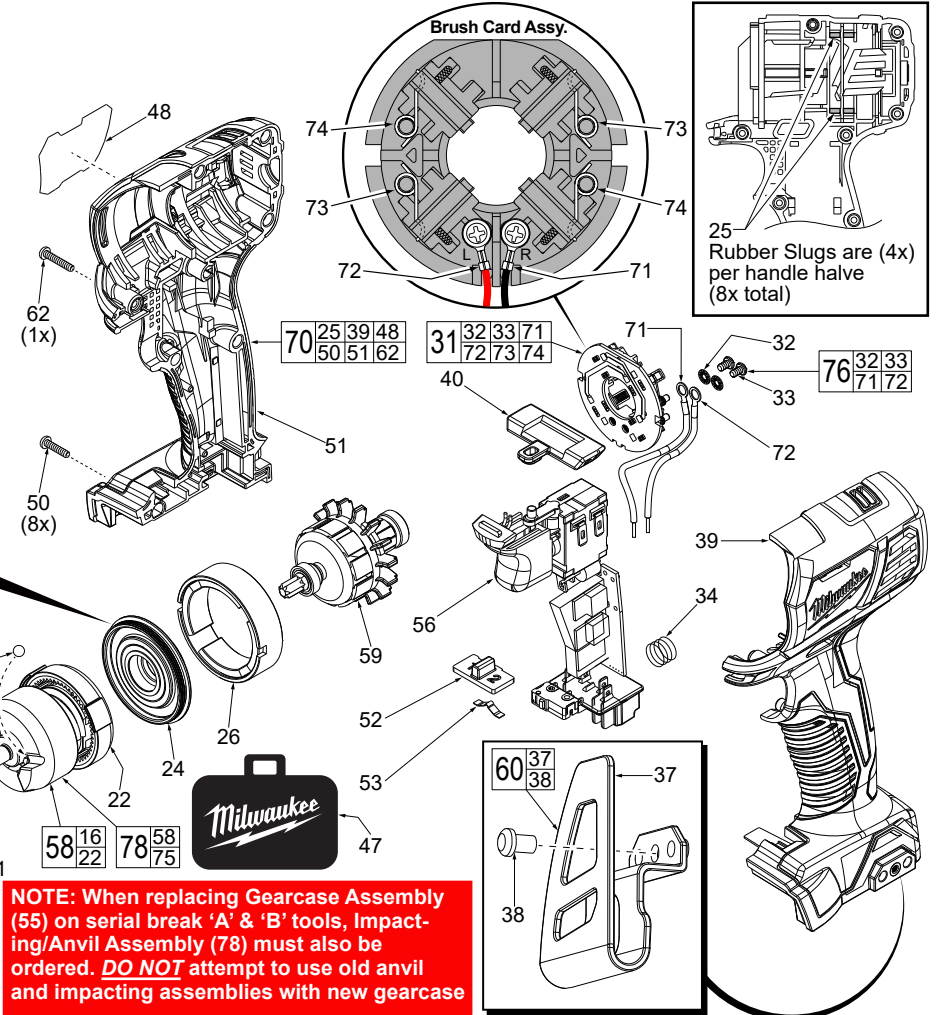
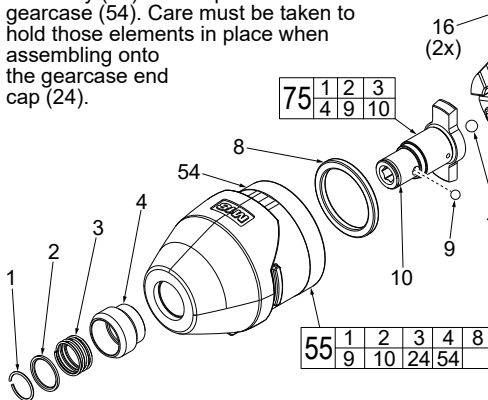
IMPORTANT NOTE: Gearcase end cap #24 is LEFT HAND THREAD!

As an aid to assembly, carefully lower the complete front end of tool (gearcase / impacting system) onto the gearcase end cap. Gently hand tighten front end assembly onto gearcase end cap. Be careful not to cross-thread! Once installed by hand, seat gearcase end cap with a good adjustable wrench using light pressure. Do not over tighten!



LEFT HAND THREAD

NOTE: Components of the impacting assembly (58) can drop out of the gearcase (54). Care must be taken to hold those elements in place when assembling onto the gearcase end cap (24).



NOTE: When replacing Gearcase Assembly (55) on serial break 'A' & 'B' tools, Impacting/Anvil Assembly (78) must also be ordered. DO NOT attempt to use old anvil and impacting assemblies with new gearcase

| FIG. | PART NO. | DESCRIPTION OF PART | NO. REQ. |
|------|------------|---|----------|
| 1 | 34-60-0725 | Retaining Ring | 1 |
| 2 | 45-88-2025 | Washer | 1 |
| 3 | 40-50-1470 | Spring | 1 |
| 4 | 45-22-2657 | Sleeve | 1 |
| 8 | 45-88-2653 | Nylon Washer | 1 |
| 9 | 02-02-1100 | 4.0mm Steel Ball | 2 |
| 10 | ----- | 1/4" Hex Anvil | 1 |
| 11 | 02-02-1300 | 5.0mm Steel Ball | 1 |
| 16 | 02-02-0180 | 4.7mm Steel Ball | 2 |
| 22 | ----- | Ring Gear | 1 |
| 24 | 44-66-0415 | Gearcase End Cap with Ball Bearing | 1 |
| 25 | 45-30-2653 | Rubber Slug | 8 |
| 26 | 18-01-2657 | Field Assembly | 1 |
| 31 | 22-22-2657 | Brush Card Assembly | 1 |
| 32 | 45-88-1980 | Spring Washer | 2 |
| 33 | 05-88-0926 | M3 x 5mm Pan Hd. T-10 Screw | 2 |
| 34 | 40-50-1090 | Terminal Block Spring | 1 |
| 37 | ----- | Belt Clip | 1 |
| 38 | 06-82-0130 | 6-32 x 5/16" Pan Hd. T-15 Mach. Screw | 1 |
| 39 | ----- | Handle Halve - Left | 1 |
| 40 | 45-24-2657 | Forward/Reverse Shuttle | 1 |
| 47 | 42-55-2657 | Carrying Case | 1 |
| 48 | ----- | Service Nameplate | 1 |
| 50 | 06-82-7236 | 4-20 x 5/8" Pan Hd. Plastite T-10 Screw | 8 |
| 51 | ----- | Handle Halve - Right | 1 |
| 52 | 45-24-2658 | Speed Selector Slide | 1 |
| 53 | 40-50-1135 | Spring Plate | 1 |
| 54 | 28-50-2657 | Gearcase with Bushing | 1 |
| 55 | 14-30-2659 | Gearcase Assembly | 1 |

| FIG. | PART NO. | DESCRIPTION OF PART | NO. REQ. |
|------|------------|---|----------|
| 56 | 23-66-2658 | Electronics Assembly - Two Speed Consists of: On-Off Switch, PCBA, LED, Speed Selector Switch and Battery Terminal Block | 1 |
| 58 | ----- | Impacting Assembly | 1 |
| 59 | 16-07-2657 | Armature Assembly | 1 |
| 60 | 42-70-2653 | Belt Clip Assembly | 1 |
| 62 | 06-82-7336 | 4-20 x 3/4" Pan Hd. Plastite T-10 Screw | 1 |
| 70 | 31-44-2657 | Handle Assembly - Two Speed | 1 |
| 71 | ----- | Leadwire Assembly - Black - Right Side | 1 |
| 72 | ----- | Leadwire Assembly - Red - Left Side | 1 |
| 73 | ----- | Brush Spring - Right | 2 |
| 74 | ----- | Brush Spring - Left | 2 |
| 75 | ----- | 1/4" Hex Anvil Assembly | 1 |
| 76 | 14-46-2394 | Leadwire/Screw/Washer Kit | 1 |
| 77 | 10-20-1126 | Warning Label (Not Shown) | 1 |
| 78 | 14-46-2658 | Impacting/Anvil Assembly | 1 |

| FIG. | LUBRICATION |
|------------------------------------|---|
| (Type 'J' Grease, No. 49-08-4220): | |
| 10 | Lightly coat front washer surface of anvil (10) with grease, place a dab in the ball holes of anvil. |
| 22,58 | Lightly coat the I.D. of the ring gear (22) and the center of the planet gears of impacting assembly with grease. |
| 54 | Coat inside of bushing inside front gearcase with grease. |
| 59 | Coat pinion of armature assembly (59) with grease. |

● = WIRE TRAPS or GUIDES

