



# SERVICE PARTS LIST

BULLETIN NO.  
54-44-2600

SPECIFY CATALOG NO. AND SERIAL NO. WHEN ORDERING PARTS		REVISED BULLETIN	DATE
M18™ Metal Cutting Shear with 18 Ga. Double Cut Head			Sept. 2014
CATALOG NO.	2635-20	STARTING SERIAL NO.	F86A
		WIRING INSTRUCTION SEE PAGE THREE	

**EXAMPLE:**  
00 0 Component Parts (Small #) Are Included  
When Ordering The Assembly (Large #).

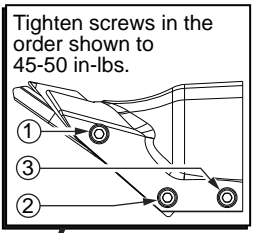
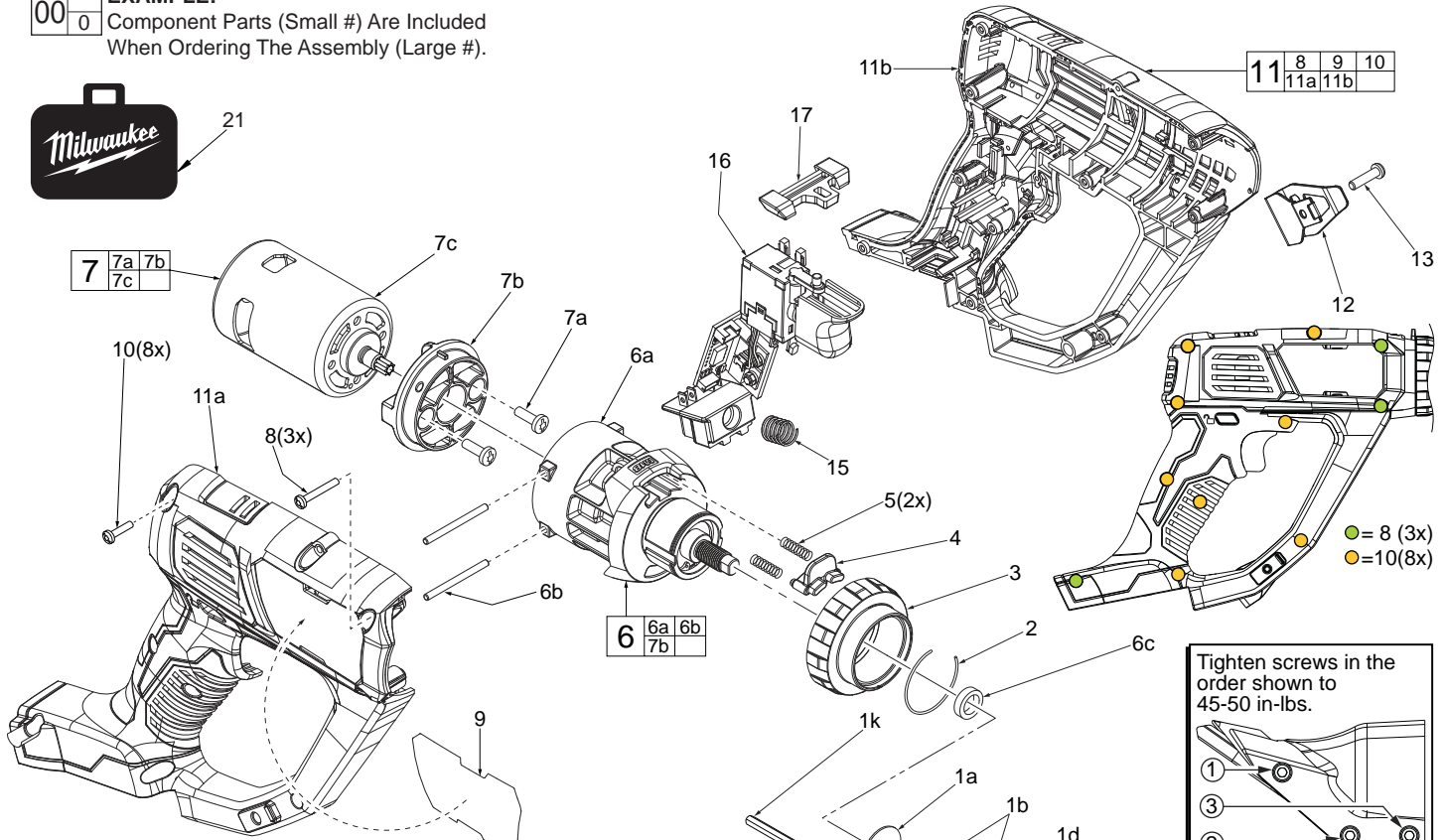
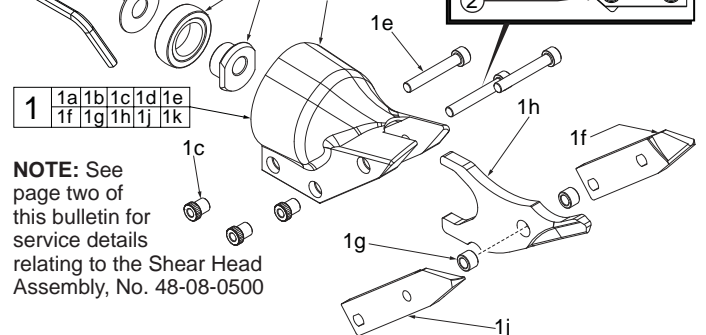


FIG.	PART NO.	DESCRIPTION OF PART	NO. REQ.
1	48-08-0500	Shear Head Assy. (Includes 1a thru 1k)	1
1a	45-88-7310	Washer	1
1b	43-16-0100	Eccentric Assembly	1
1c	43-84-0460	Knurled Insert	3
1d	43-76-0400	Shear Housing	1
1e	06-75-2115	10-24 x 1-1/4" Skt. Hd. Cap Screw	3
1f	48-44-0160	Blade - Left Side	1
1g	42-40-0520	Bushing	2
1h	48-44-0150	Blade - Center	1
1j	48-44-0170	Blade - Right Side	1
1k	49-96-0070	5/32" Hex Allen Wrench	1
2	34-60-0905	'C' Retaining Ring	1
3	28-84-0130	Rotational Collar	1
4	31-52-0070	Rotational Head Release Lever	1
5	40-50-1085	Spring	2
6	14-30-2637	Gearbox Assembly	1
6a	-----	Gearbox	1
6b	-----	2.5mm x 47mm Steel Pin	2
6c	45-88-7940	Washer (Spacer)	1
7	14-50-2635	Motor Assembly	1
7a	-----	M5.0 x 12mm Screw	2
7b	-----	Motor Mount Plate	1
7c	-----	Motor	1
8	05-86-0300	M3.0 x 22.5mm Pan Hd. ST T-10 Screw	3
9	12-20-2635	Service Nameplate	1
10	06-82-6350	M3.0 x 16mm Pan Hd. ST T-10 Screw	8
11	31-44-2900	Handle Housing Assembly	1
11a	-----	Handle Half - Right (Cover)	1
11b	-----	Handle Half - Left (Support)	1
12	42-70-0095	Belt Clip	1
13	06-81-4205	6-32 x .75" Pan Hd. Phillips Machine Screw	1
15	40-50-1090	Compression Spring	1
16	23-66-6000	Electronics Assembly (Includes On-Off Switch, PCBA and Terminal Connector Block)	1
17	42-42-0515	Lock-Off Shuttle	1
21	48-55-3490	Contractors Bag	1



**NOTE:** See page two of this bulletin for service details relating to the Shear Head Assembly, No. 48-08-0500

- FIG. NOTES:**
- 1b,6a To remove the eccentric assembly (1b) from the output shaft of the gearcase (6a) a 1/4" open end wrench should be used to secure the end of the shaft. Use a thin walled 3/4" wrench to tighten/loosen the eccentric.
  - 2,3,4 When replacing Rotational Collar (3), remove 'C' Retaining Ring (2). Pull back Release Lever (4) while turning Rotational Collar (3) 90° in either direction, lining up the lugs in the Rotational Collar with the slots on the front of the Gearbox.
  - 3,4,5,6a Place a light film of Type 'E' Grease, No. 49-08-4122 to the inside diameter of the Rotational Collar (3), to the front neck of Gearbox (6a), to the underside of the Release Lever (4) and the two Release Lever Springs (5).
  - 6,7,7b Service replacement gearcase assembly (6) comes with a motor mount plate (7b) that must be removed and discarded when servicing. A motor mount plate already exists on the motor assembly (7).