



SERVICE PARTS LIST

BULLETIN NO.
54-47-2600

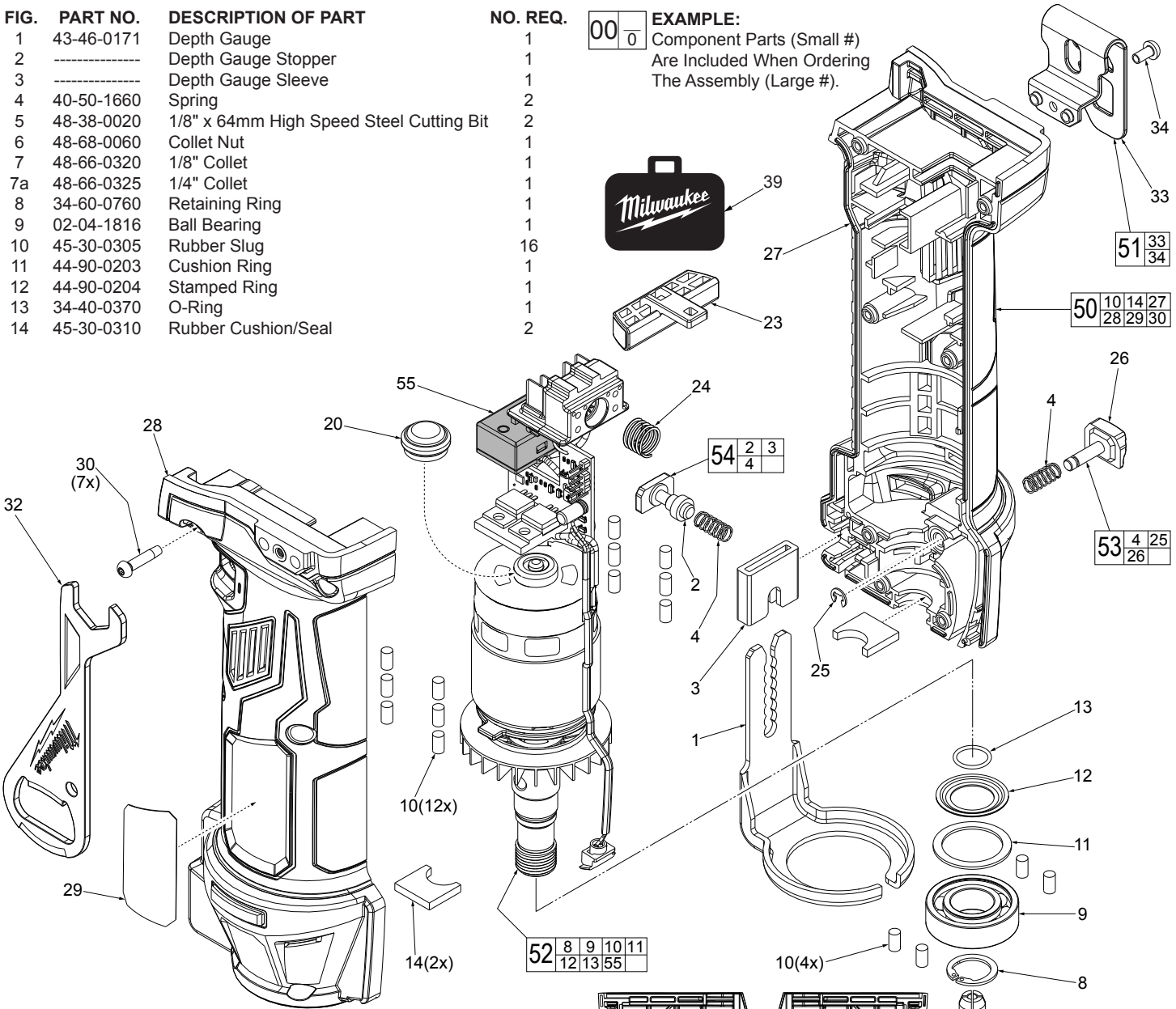
| SPECIFY CATALOG NO. AND SERIAL NO. WHEN ORDERING PARTS | | REVISED BULLETIN | DATE |
|--|----------------|----------------------------|--------------------|
| M18™ Cut-Out Tool | | | Sept. 2016 |
| CATALOG NO. | 2627-20 | STARTING SERIAL NO. | H54A |
| | | | WIRING INSTRUCTION |

| FIG. | PART NO. | DESCRIPTION OF PART | NO. REQ. |
|------|------------|--|----------|
| 1 | 43-46-0171 | Depth Gauge | 1 |
| 2 | ----- | Depth Gauge Stopper | 1 |
| 3 | ----- | Depth Gauge Sleeve | 1 |
| 4 | 40-50-1660 | Spring | 2 |
| 5 | 48-38-0020 | 1/8" x 64mm High Speed Steel Cutting Bit | 2 |
| 6 | 48-68-0060 | Collet Nut | 1 |
| 7 | 48-66-0320 | 1/8" Collet | 1 |
| 7a | 48-66-0325 | 1/4" Collet | 1 |
| 8 | 34-60-0760 | Retaining Ring | 1 |
| 9 | 02-04-1816 | Ball Bearing | 1 |
| 10 | 45-30-0305 | Rubber Slug | 16 |
| 11 | 44-90-0203 | Cushion Ring | 1 |
| 12 | 44-90-0204 | Stamped Ring | 1 |
| 13 | 34-40-0370 | O-Ring | 1 |
| 14 | 45-30-0310 | Rubber Cushion/Seal | 2 |

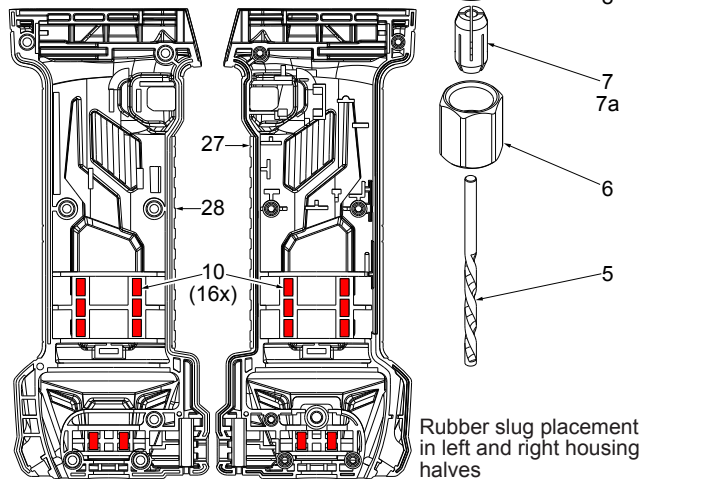
EXAMPLE:

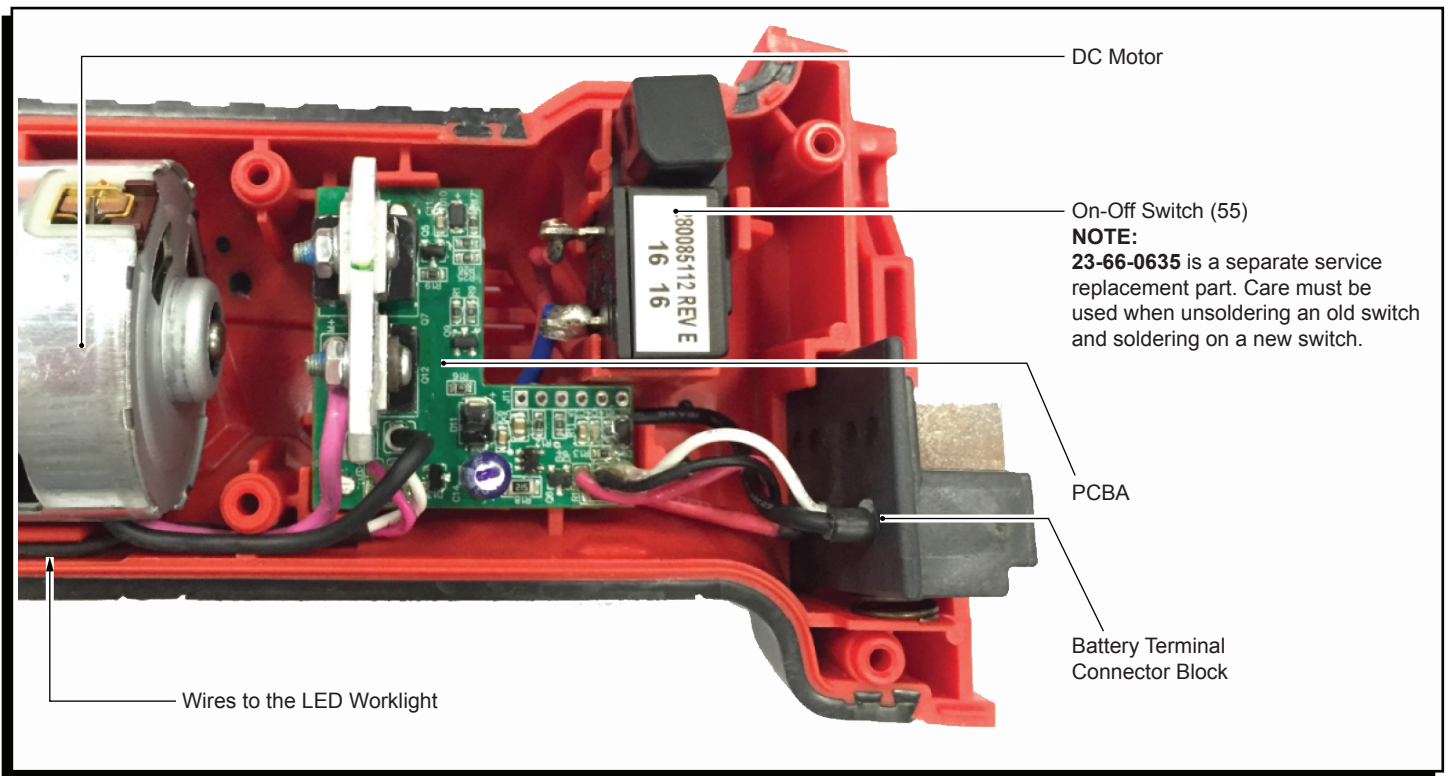
| | |
|----|---|
| 00 | 0 |
|----|---|

 Component Parts (Small #)
 Are Included When Ordering
 The Assembly (Large #).



| FIG. | PART NO. | DESCRIPTION OF PART | NO. REQ. |
|------|------------|---|----------|
| 20 | 43-44-0515 | Motor Cap Seal | 1 |
| 23 | 42-42-0425 | On-Off Switch Shuttle | 1 |
| 24 | 40-50-1090 | Spring | 1 |
| 25 | 44-90-0990 | E Retaining Ring | 1 |
| 26 | ----- | Spindle Lock Button | 1 |
| 27 | ----- | Housing Support - Left Housing Halve | 1 |
| 28 | ----- | Housing Cover - Right Housing Halve | 1 |
| 29 | 12-20-0084 | Service Nameplate | 1 |
| 30 | 06-82-2025 | M3.5 x 16mm Pan Hd. ST T-10 Screw | 7 |
| 32 | 49-96-0011 | Wrench | 1 |
| 33 | ----- | Belt Clip | 1 |
| 34 | 06-82-0130 | 6-32 x 5/16" Pan Hd. T-15 Machine Screw | 1 |
| 39 | 42-55-6148 | Contractors Bag | 1 |
| 50 | 31-44-0059 | Housing Assembly | 1 |
| 51 | 42-70-2653 | Belt Clip Kit | 1 |
| 52 | 14-50-0081 | Motor/Electronics/Spindle Assembly | 1 |
| 53 | 44-20-0075 | Spindle Lock Assembly | 1 |
| 54 | 42-42-0415 | Depth Gauge Adjustment Assembly | 1 |
| 55 | 23-66-0635 | On-Off Switch | 1 |





NOTE: Be sure to place all components of the Motor/Electronics/Spindle Assembly (52) firmly and squarely in the Housing Support (27). Be sure to route wires into wire traps as shown. Check for any interferences prior to installing the Housing Cover (28).